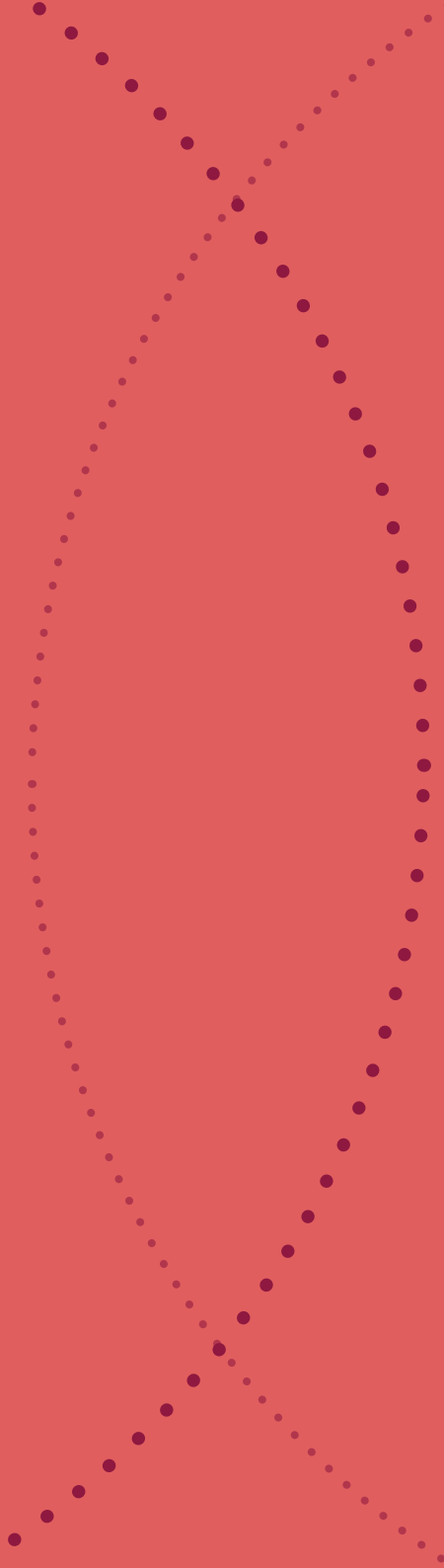


PORTFOLIO

# Maia Krips

INTERIOR DESIGN

maia k  
design



"Design enhances the simple act of being" - Laura Níubó

# CONTENTS

02 HOSPITALITY DESIGN

08 COMMUNITY DESIGN

12 FURNITURE DESIGN

16 RETAIL DESIGN

20 RESIDENTIAL DESIGN

# HOSPITALITY DESIGN | WEST DEAN B&B

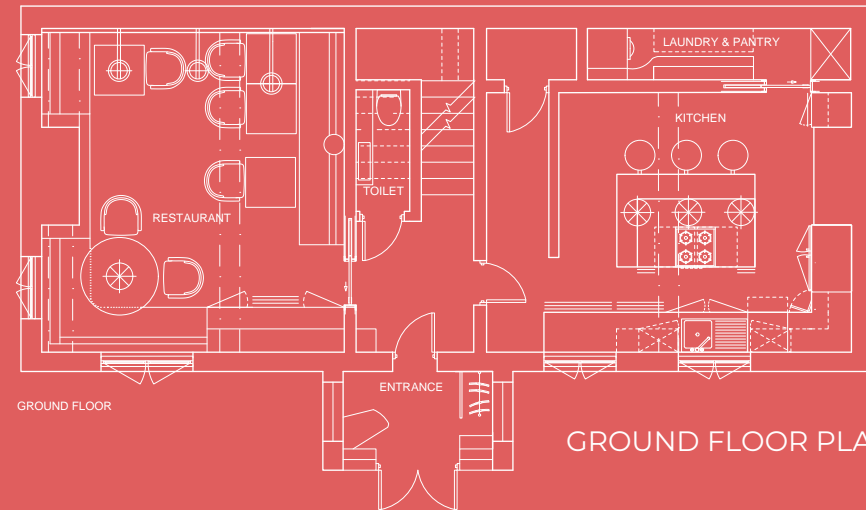
## THE BRIEF

The brief is to convert a grade ii listed residence into a Bed & Breakfast, offering extended stays and culinary experiences, while preserving its historical charm. The house features a dining room, kitchen with basement access to a speakeasy bar, 4 bedrooms & en-suites, and a garden room

## THE CONCEPT

### BREAKTHROUGH

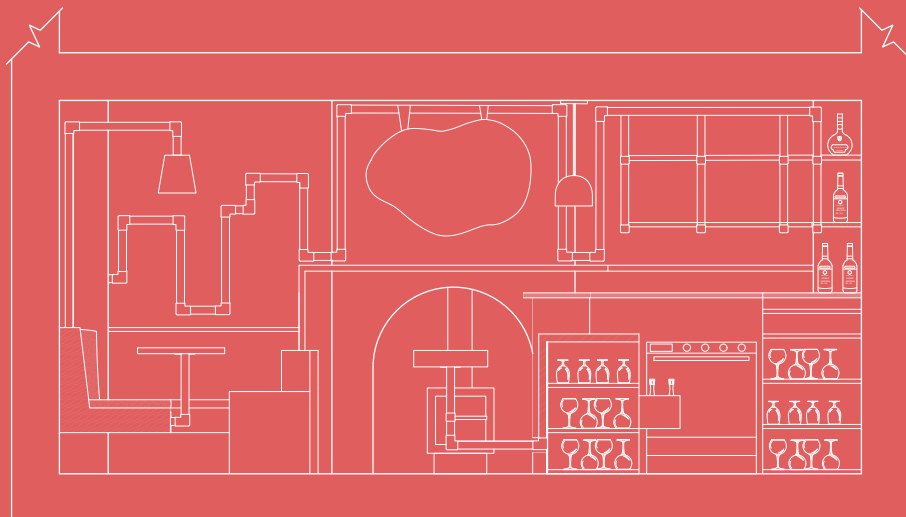
Breakthrough marks a crossing of thresholds, where boundaries are crossed and new possibilities emerge. A concept inspired by Edward James who broke through family and societal expectations, and became a pivotal figure in surrealism



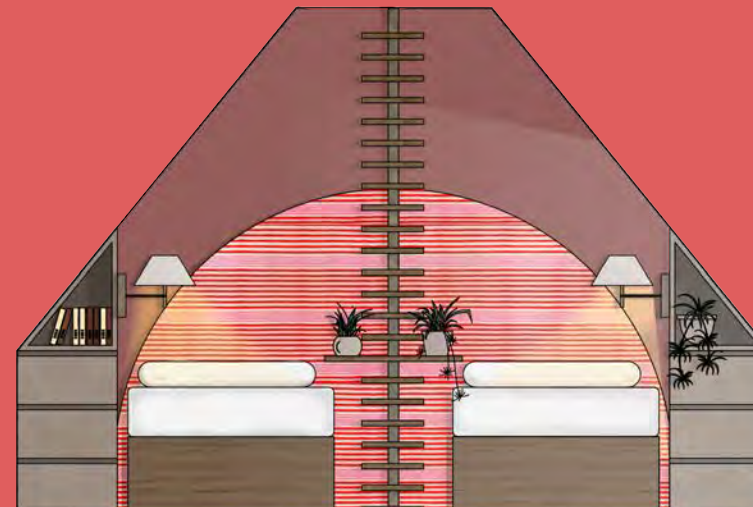
GROUND FLOOR

GROUND FLOOR PLAN

## BAR SECTION



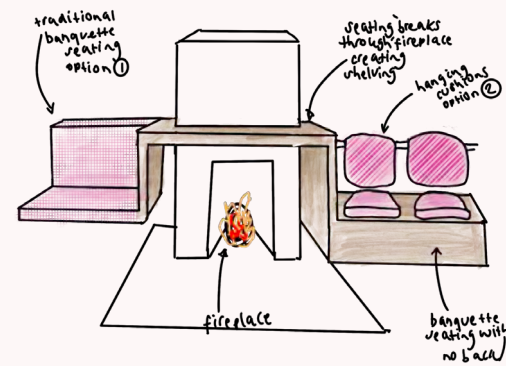
## BEDROOM ELEVATION



Technical drawings not to scale



## THE DINING ROOM



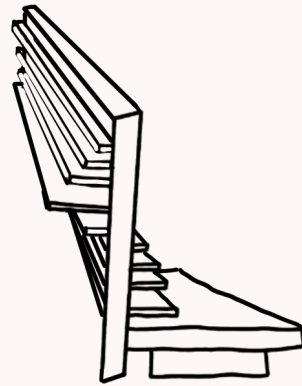
The dining room functions as a restaurant, seating 14 people. It features banquette seating that visually breaks through the fireplace, alongside a lighting installation made from scaffold poles, finished in distressed brass, celebrating giving materials a second life.





# BEDROOMS

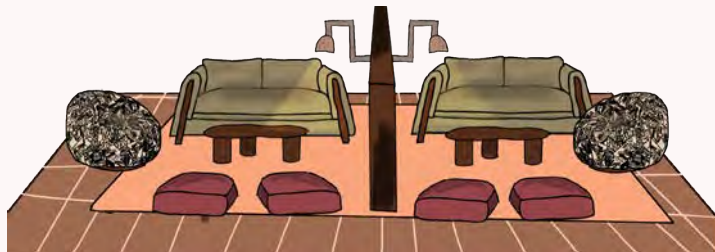
Directional lighting enables light to breakthrough the multifunctional structure, which functions as a headboard, room divider & wardrobe. Slatted elements break through and extend into both sides of the room, subtly connecting the divided spaces.





## GARDEN ROOM

The garden room aims to make the most of the views that the property offers, that the house can't make the most of due to its north facing position. The space is designed as a lounge retreat, offering a place to relax and unwind. A shelving room divider allows multiple groups to use the area while still feeling a sense of privacy. Lighting breaks through the unit on both sides, enhancing the sense of depth and separation.











BASEMENT BAR

# COMMUNITY DESIGN

## NOMADIC COMMUNITY GARDENS

### THE BRIEF

In my role as Deputy Project Leader, I was responsible for zoning, sketches, renders, and lighting. The project supported Nomadic Community Gardens' vision of transforming vacant urban areas into vibrant, sustainable community hubs by designing a temporary, multifunctional space using reclaimed materials to foster community, education, and well-being through local collaboration.

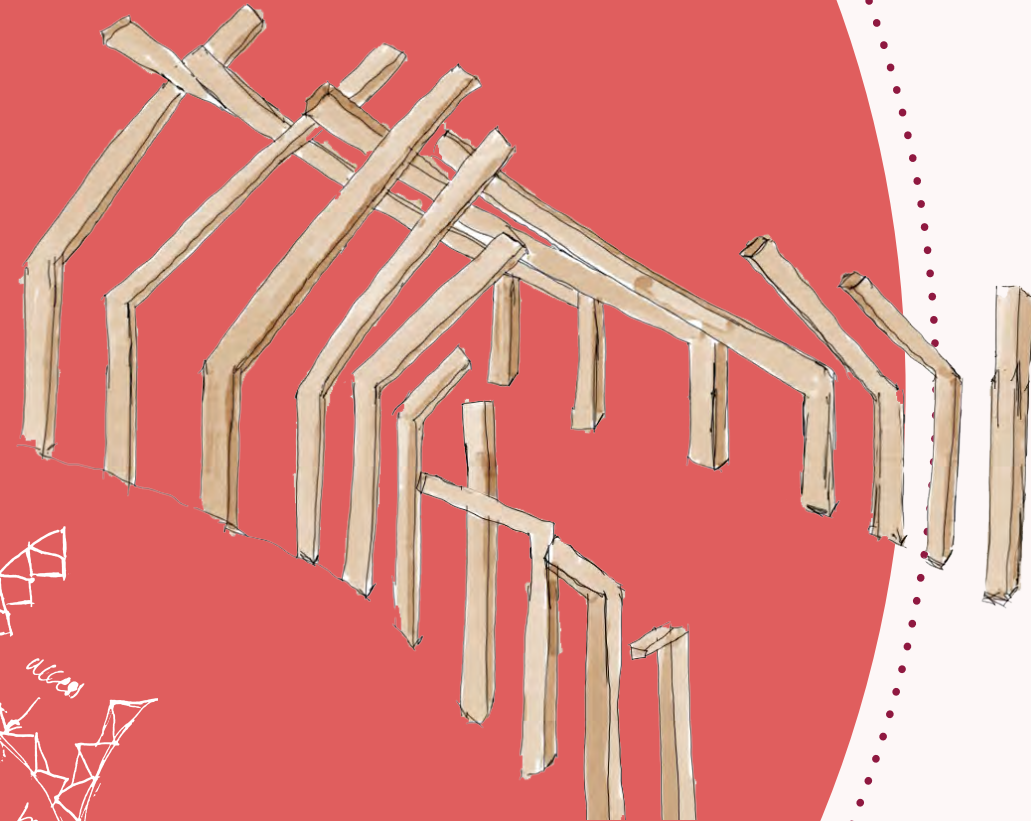
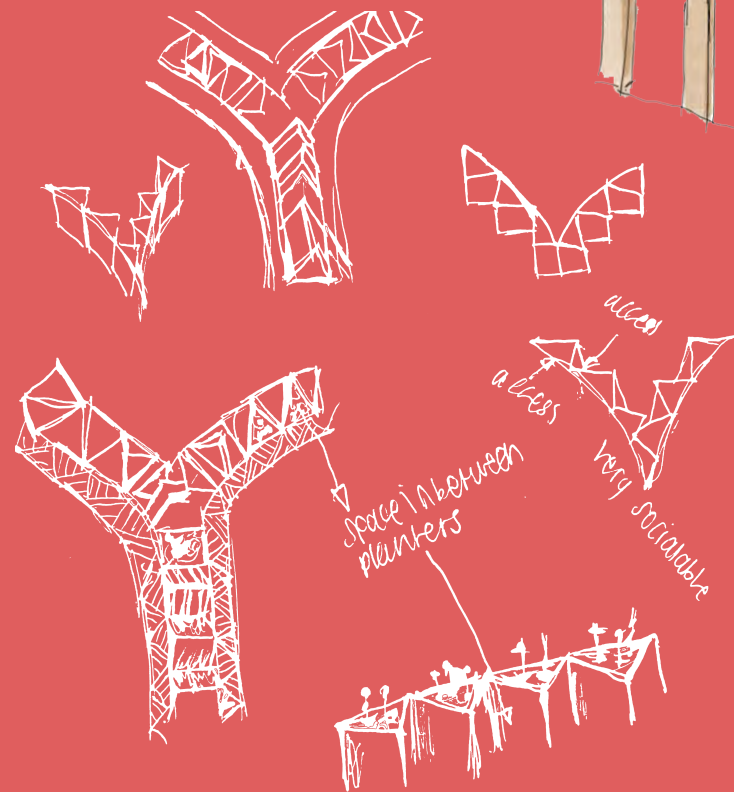
### SUSTAINABILITY

The structure is built using reclaimed timber, scaffolding boards, and donated bricks, reducing the need for new materials. Reclaimed paints and wood protectors give a second life to finishes, and borrowed tools from sponsors to minimise environmental impact.

### THE CONCEPT:

#### FUSION IN MOTION

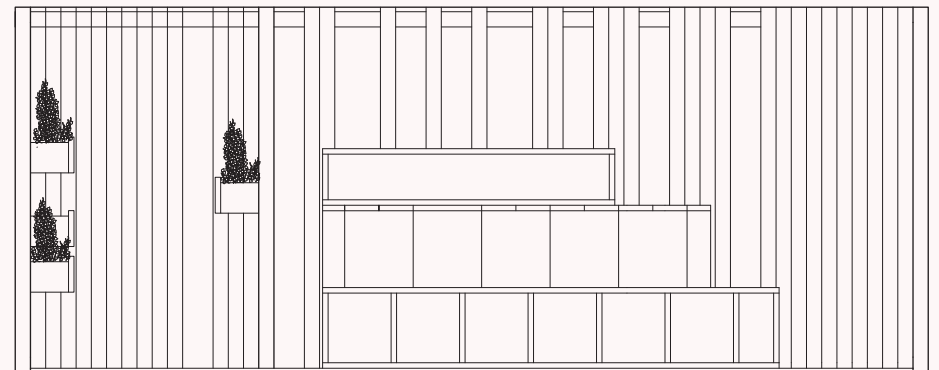
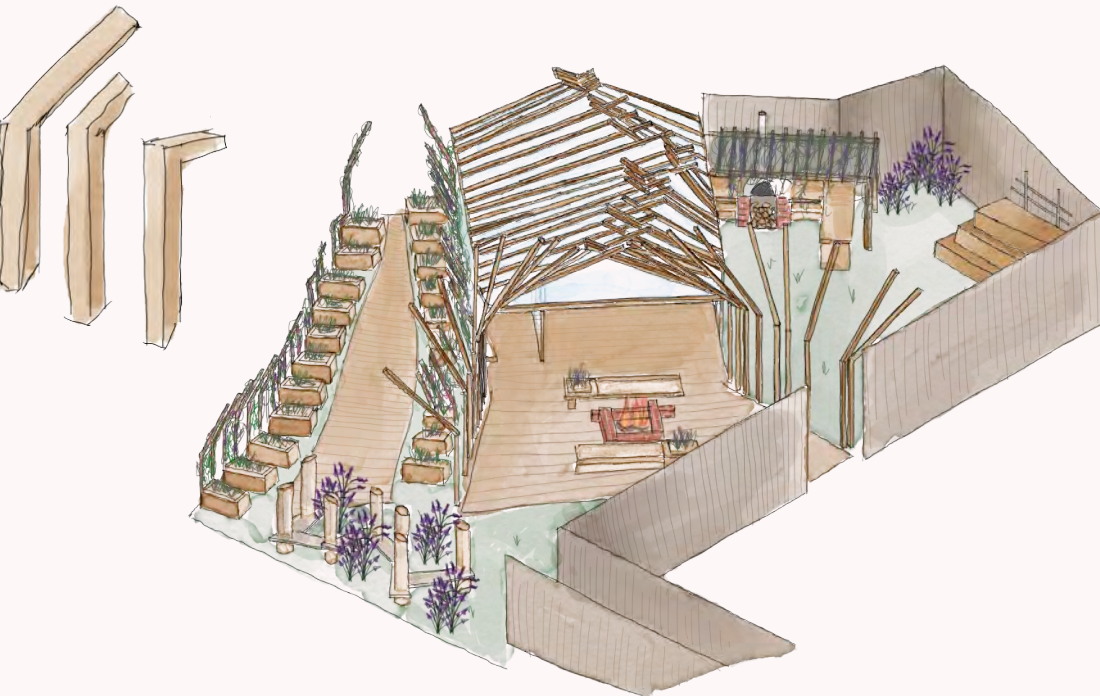
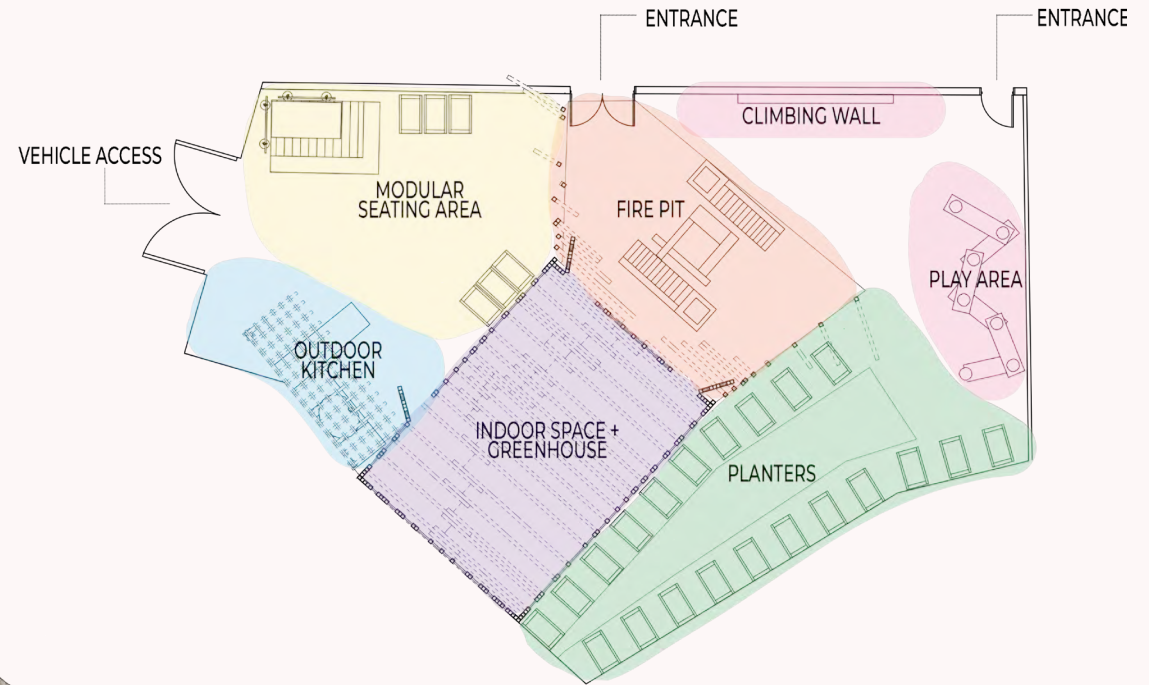
Fusion in Motion encapsulates the ethos of NGC by merging diverse communities, cultures, and generations while also blending the built environment with nature, emphasising adaptability and movement.





# ZONING

The design centers on a multipurpose structure that anchors the space and creates a natural transition between indoor and outdoor areas. Social spaces like the fire pit, seating, and kitchen flow into activity zones including planters, a play area, and climbing wall. A multifunctional indoor space and integrated greenhouse, encourage community use, while the curving structure represents fusion in motion and defines distinct functional zones.



Elevation of the interior of the indoor space and greenhouse, showing modular furniture

Technical drawings not to scale



## CONSTRUCTION

The structure uses 100x100mm timber posts in 2.4m lengths, secured with post supports or a sleeper base, depending on ground conditions. The roof is bolted with lap joints and reinforced connectors, while PVC corrugated sheets and weatherproofing components enclose the walls.

## LIGHTING

Strategic lighting has been incorporated throughout. LED strip lights enhance wayfinding along the planter zone's pathways and illuminate the beams in front of the main structure, highlighting the fire pit and surrounding garden. Additionally, wall lights are placed around the garden, while string lights in the outdoor kitchen create a warm and inviting atmosphere.







# FURNITURE DESIGN | RETAIL DESK

## THE BRIEF

The brief was to design a sustainable retail desk for Eco Eyewear's pop-up shop, emphasising the brand's commitment to eco-friendly practices. Thus, assembly, sustainability and transportability of the desk was imperative.

## MATERIALS

Honeycomb cardboard and recycled steel were chosen for their lightweight properties, durability and strength. Recycled Steel can be infinitely recycled. Honeycomb cardboard is 45% lighter than corrugated cardboard. Reducing transportation costs and supports the brand's commitment to sustainability.

## SUSTAINABILITY

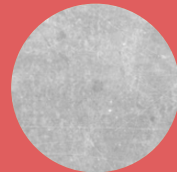
The desk is designed using flat-pack layers that save space and simplify logistics for transportability and construction. Lightweight honeycomb cardboard ensures easy assembly, while the modular design allows quick disassembly and reassembly. Minimising the environmental impact of transportation.



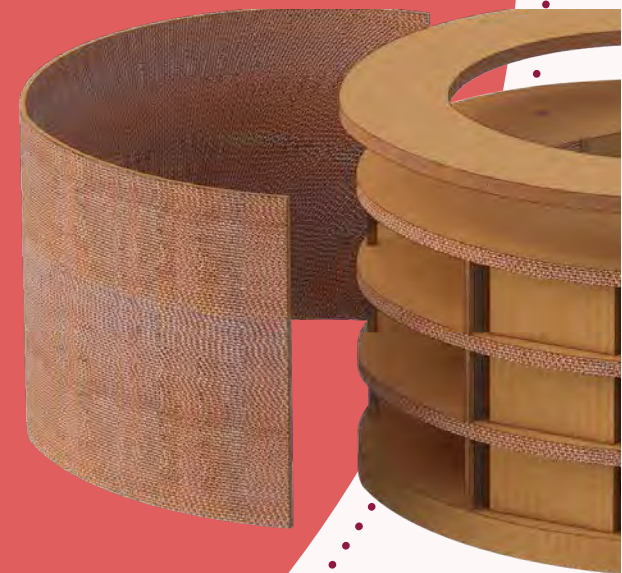
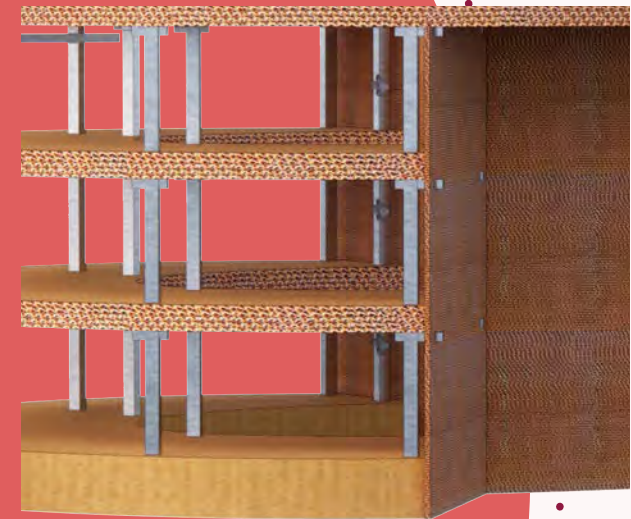
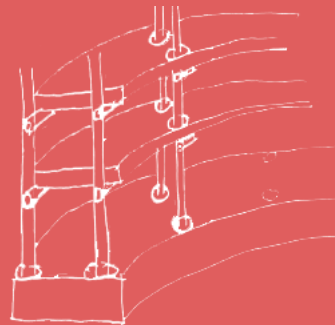
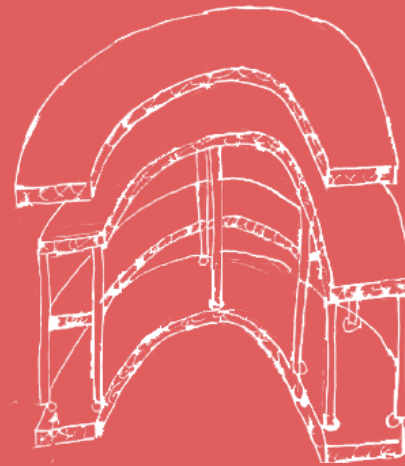
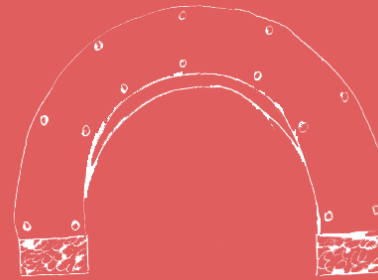
Honeycomb Cardboard raw texture



Smooth Honeycomb Cardboard

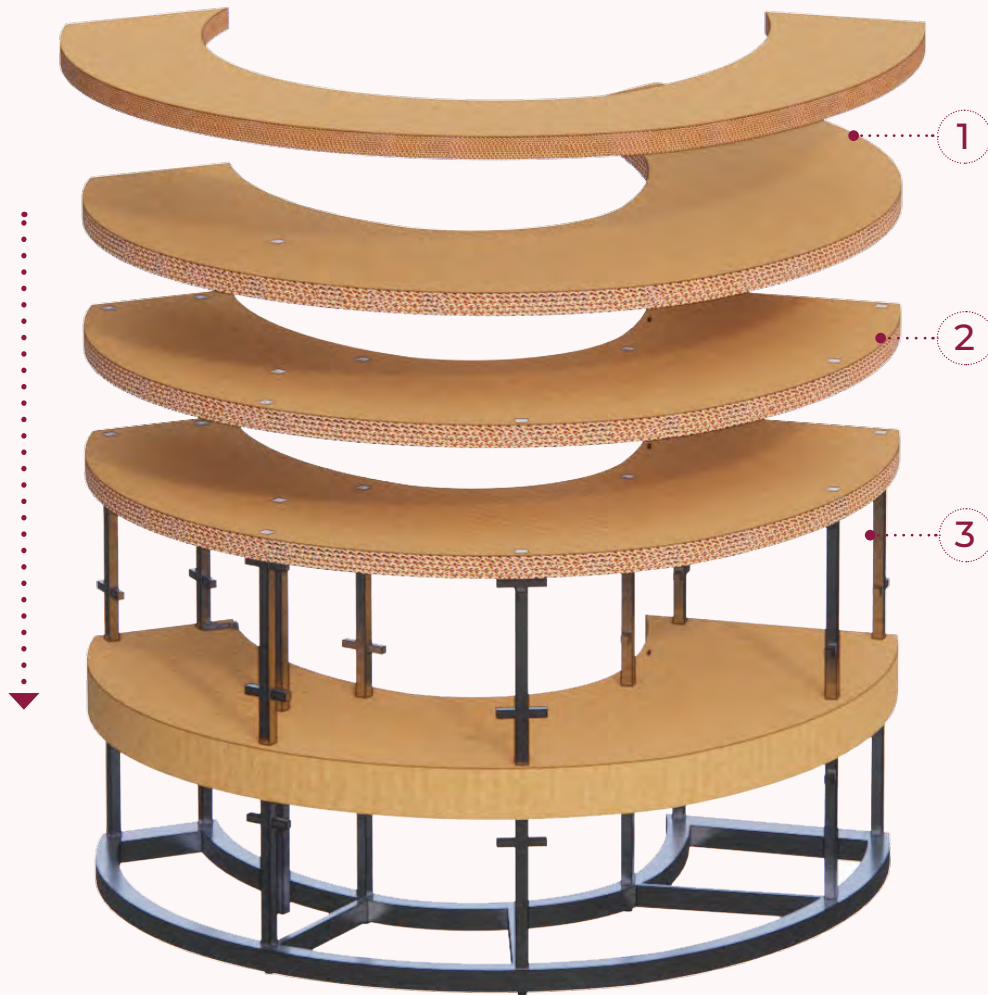


Recycled Steel





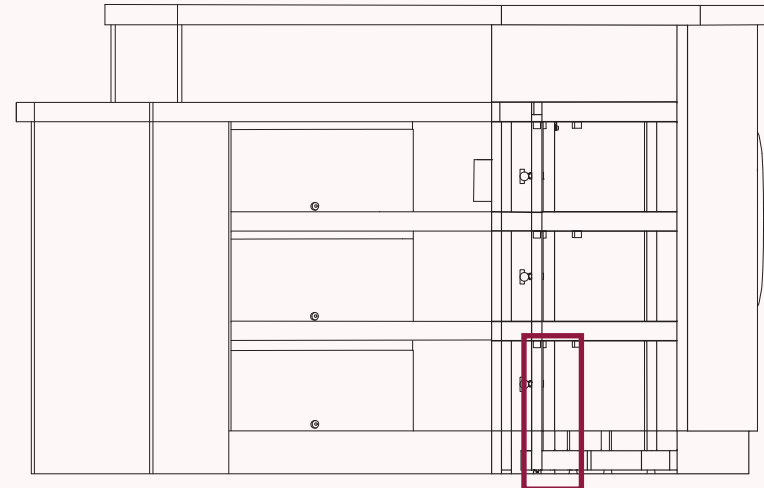
# CONSTRUCTION



The desk is built using 5 layers of cardboard panels supported by a recycled steel framework. Each panel is threaded through 10 steel poles, passing through aligned holes in the layers. Panels sit on 28 steel pegs that slot into the poles, creating stable shelving tiers.

## KEY:

1. Honeycomb Cardboard raw texture
2. Smooth Honeycomb Cardboard
3. Recycled Steel

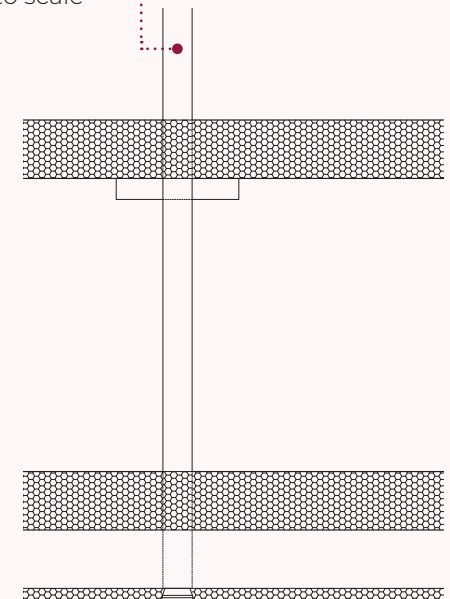


Technical drawings not to scale

Steel poles extend through the layers and anchor to a base steel frame for durability and alignment.

Exterior panels are slotted onto steel pegs, concealing and securing the interior.

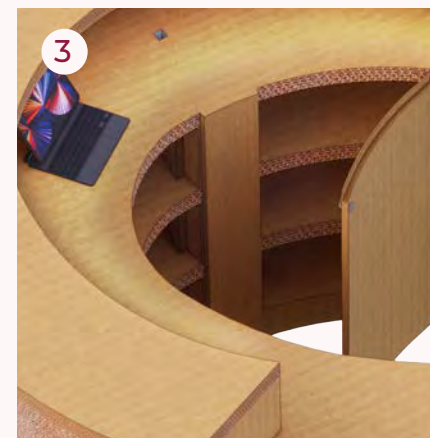
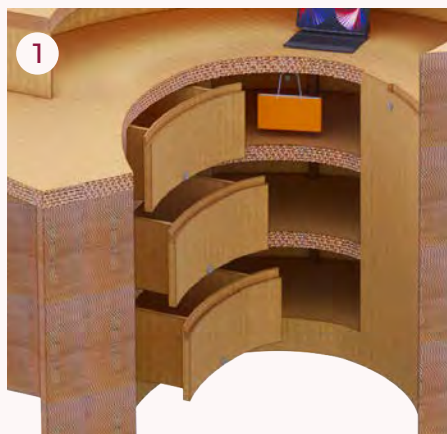
Front and wheelchair access panels are attached with ECO heavy-duty Velcro for secure fastening.





## KEY FEATURES:

1. Removable drawers that can be re-used for product display, with modular cardboard dividers inside
2. Rod slotted into vertical pole, to hang shopping bags in open shelving
3. Lockable cupboard, with shelving, and cable management pole.







This render showcases the desk being relocated to a new Eco Eyewear shop, highlighting its adaptability and reusability when transported to different locations.

# RETAIL DESIGN | POP UP SHOP

## THE BRIEF

Tasked to create a 4x6m pop-up shop as part of Eco Eyewear's brand activation strategy, located in Westfield White City for 3 months then it will be relocated. Evoking a new vision and experience of the brand based on its ethos, values and aspirations of the company.

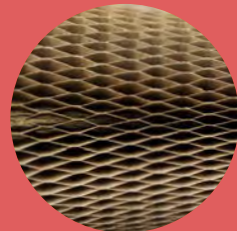
## MATERIALS

Honeycomb cardboard, is lightweight, strong and adaptable. Recycled steel does not lose its structural strength or durability when recycled. Bamboo flooring, a durable renewable resource, suitable for heavy traffic. These materials allow the shop to be sustainable, lightweight and easy to assemble, reflecting the brands values and ethos.

## THE CONCEPT:

### GROWTH

The sponge expands by absorption through interconnected pores, representing how individuals absorb knowledge and skills to grow intellectually.



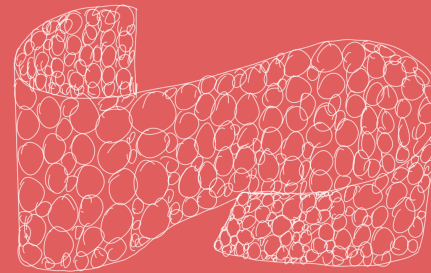
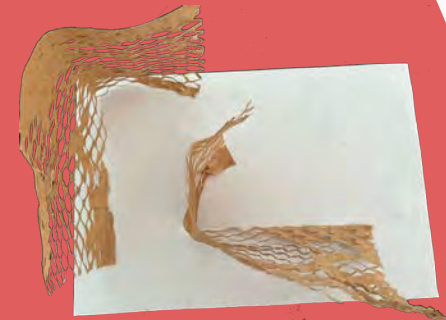
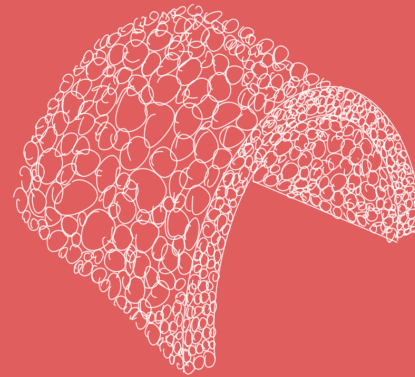
Honeycomb Cardboard



Bamboo Flooring



Recycled Steel

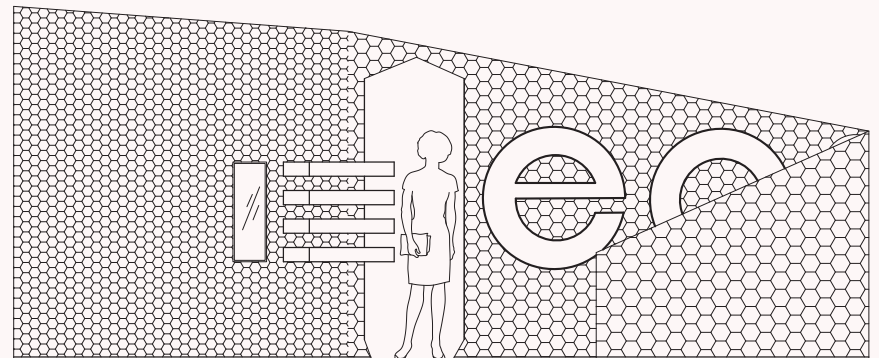
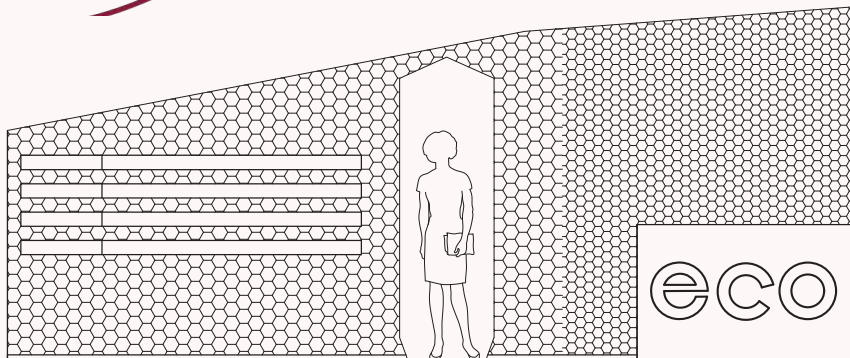




## THE PLAN

1. Educational display shelving made from honeycomb cardboard for products, materials and information about them lit by cool white LED strips below each shelf.
2. Walkway for easy access between the two sides of the shop.
3. Selfie wall, with neon Eco Eyewear branding to encourage photos to be taken
4. Interactive screen, to learn about products and the brand
5. Lockable storage unit for staff, hidden behind honeycomb cardboard panel
6. Shop desk made from honeycomb cardboard and recycled steel.

Technical drawings not to scale







Front View

## CONSTRUCTION

The structure is divided into 7, 25mm thick panels. Within each panel are two vertical recycled steel rods 22mm in diameter, to support the structure. ECO Heavy duty Velcro is used to secure the panels together, and to attach the shelving and branding to the wall and desk. Fixed to the floor is a 105mm wide, recycled steel track which is modular and houses the panels and steel poles.

## EXPERIENCE

Eco Eyewear vibrant branding creating selfie area to encourage customers to post the shop on social media to grow the brands presence on these platforms. Educational displays showcase products alongside the raw materials from which they are made, and information about the materials, allowing customers to learn and touch the raw materials of the products



Back View







# RESIDENTIAL DESIGN | BATTERSEA APARTMENT

## THE BRIEF

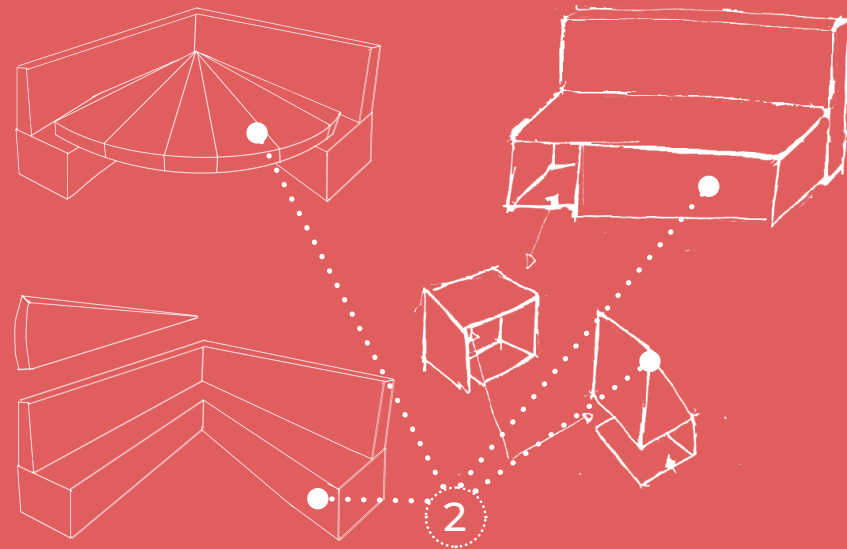
A design for a new build, 4th floor shell apartment in Battersea. The apartment is approx. 100m<sup>2</sup>, with a ceiling height of 3500mm and south-west facing large panoramic windows. The client believes that 'form should never compromise function'. The property requires, open-plan living, kitchen, and dining area, a hidden workspace and a display space for artwork, plus a reading nook.

## THE CONCEPT

### DUALITY

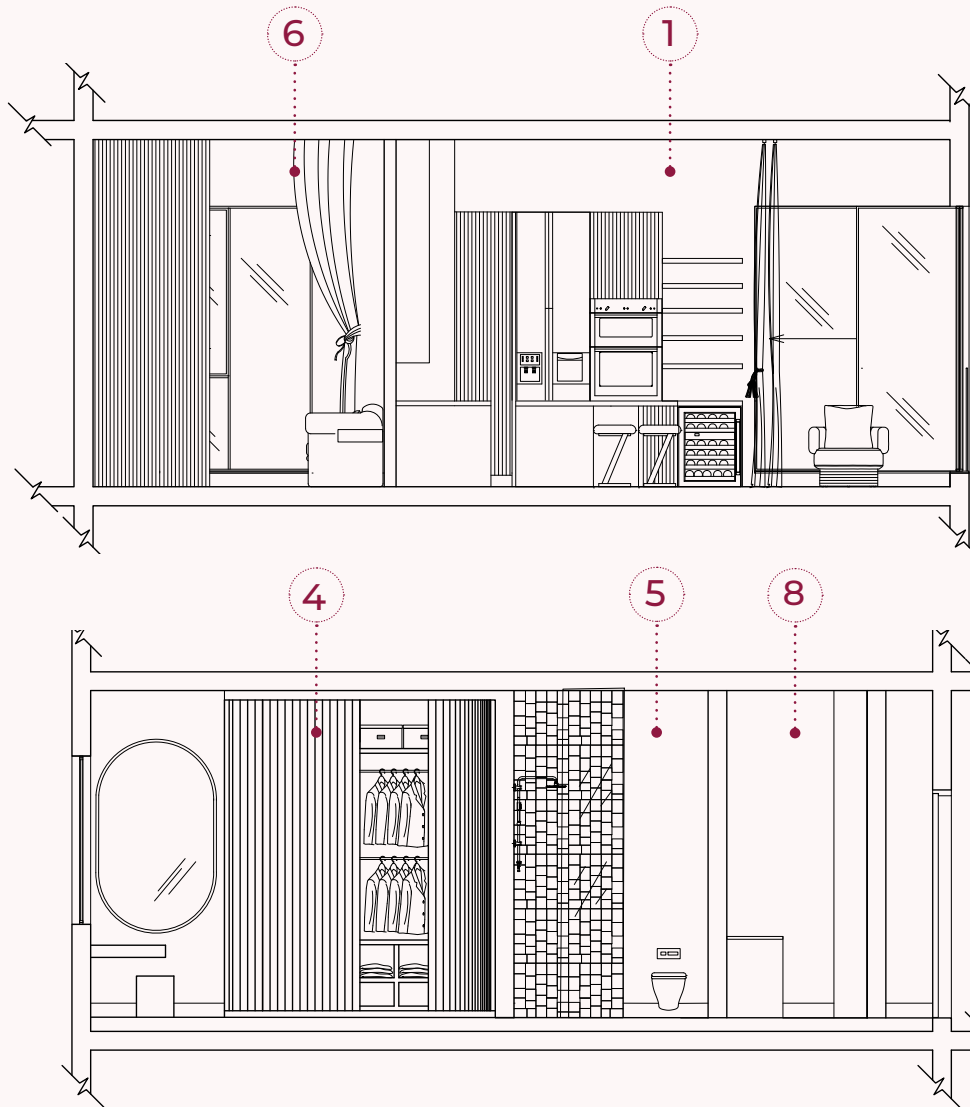
The folding fan represents, balancing drawing attention and secrecy, using contrast to evoke mystery and the sense of the unknown. Its dual nature reveals and conceals, provoking curiosity.

## MATERIALITY



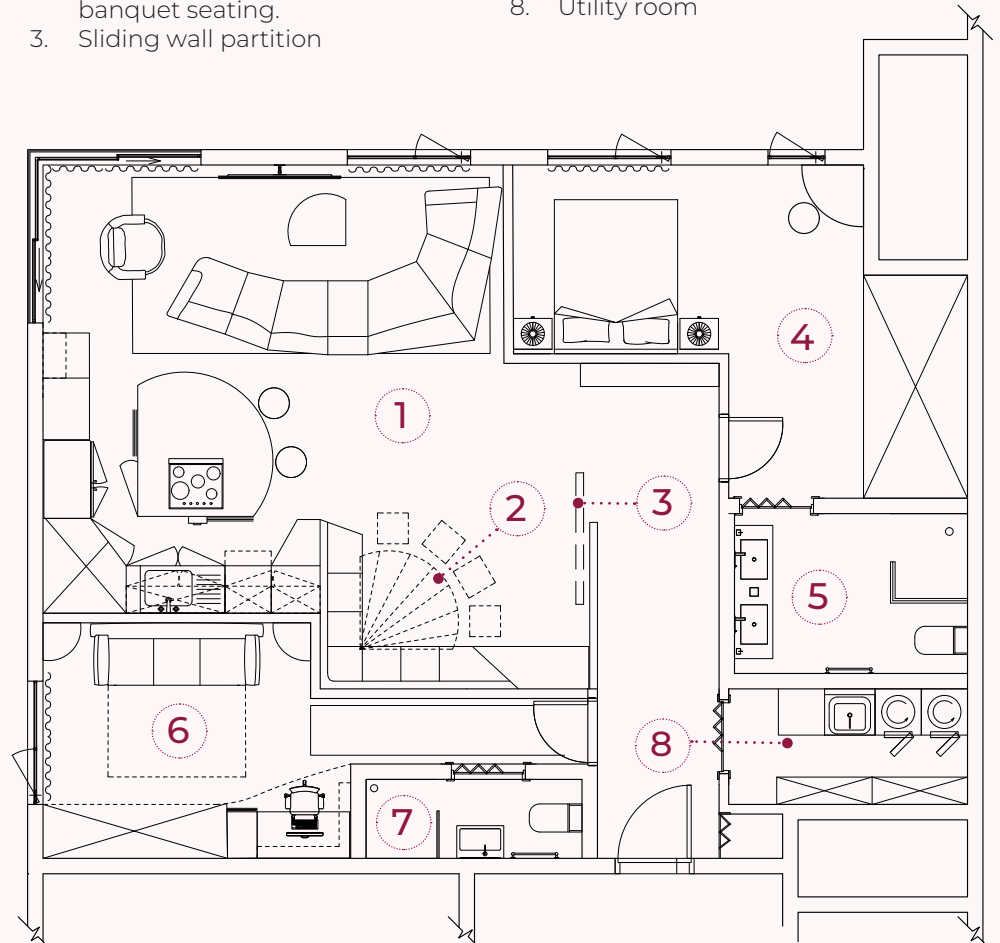


# TECHNICAL DRAWINGS



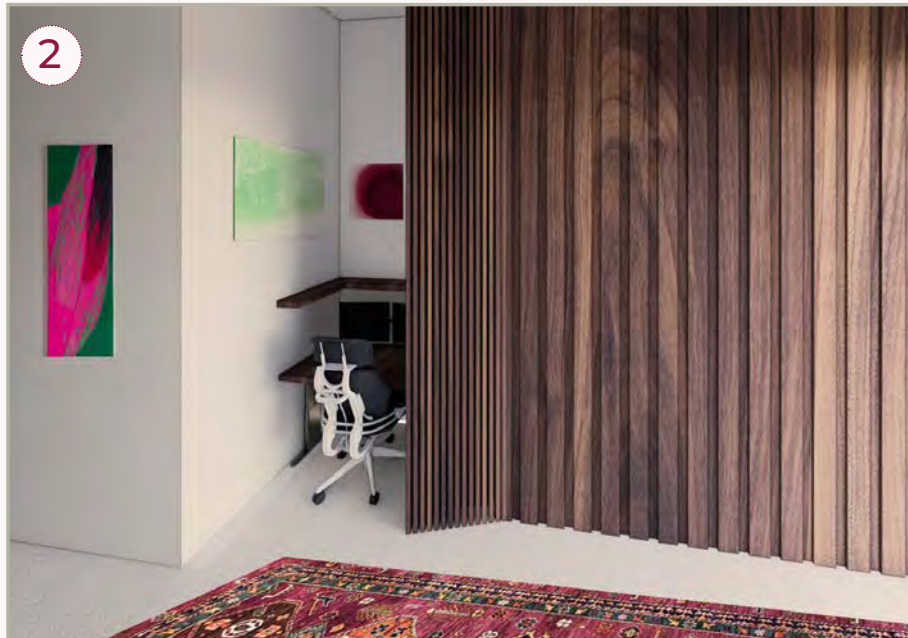
## KEY:

1. Open plan kitchening and living space
2. Folding dining table with banquet seating, and foldable stools, that are stored within banquet seating.
3. Sliding wall partition
4. Master Bedroom
5. Master Bedroom en suite
6. Guest bedroom/Office with Sofa bed and hidden office desk
7. Guest bathrom
8. Utility room



Technical drawings not to scale

1. A sliding partition wall to display the client's artwork. Individual folding panels and an extra sliding door to close off the wall, enabling the user to choose a level of privacy within the space.
2. Office/guest bedroom wall, contains a large wardrobe and a sliding door to access the desk, when being used as an office.
3. The primary bedroom features a large sliding-door wardrobe that doubles as a feature wall, a naturally lit dressing area with a large LED backlit mirror, and a statement bed area with hanging lights that looks out onto the view.
4. Open plan kitchen and living space, featuring the sliding partition wall and the folding dining table.













## ABOUT ME:

As a KLC School of Design graduate with a Diploma of Higher Education in Applied Interior Design, I bring a strong passion for both hospitality and residential interiors. With eight years of hands-on experience in the hospitality industry, including roles in waitressing and bartending, I have gained valuable insight into the operational and spatial needs of hotels, restaurants, and bars. A naturally creative individual, I also enjoy producing my own artwork, which continues to inform and inspire my passion for interior design.

## SKILLS:

- AutoCAD
- Adobe Suite
- SketchUp
- Photoshop
- Enscape
- InDesign
- EstiPC
- LightRoom





[maiakrips@hotmail.com](mailto:maiakrips@hotmail.com)

07850191995

@maiakdesign