

INTERIOR DESIGN PORTFOLIO

Charlotte Wray

INTRODUCTION.

**Once you achieve perfection, then
what is there left to work for.**

This portfolio is a body of work that I have worked tirelessly to produce. And whilst every project here will undoubtedly never reach a definitive end to what 'could be perfect', it represents my mistakes and my achievements on this journey to becoming an interior designer. The constant desire to learn and grow from the people around me and the mistakes and successes that I have made are what keep me engaged and driven within this field.

CONTENTS.

Social Design



4-13

Commercial Staircase



14-17

Commercial hospitality



18-21

01.

PROJECT OVERVIEW

CLIENT

Refuge

LOCATION

Peel Park, Salford, Greater Manchester, UK

THE BRIEF

To design a women and children’s shelter in response to the growing crisis of domestic abuse in Manchester. In 2023 alone, over 14,000 incidents were reported to Greater Manchester Police, with many involving children. Most victims are women, and a majority have nowhere safe to go. These statistics show a critical need for accessible emergency accommodation that provides immediate protection and support for those escaping abuse.

Without safe shelter, women and children are at greater risk of homelessness or returning to dangerous environments. Nationally, nearly 40% of women who leave an abusive partner are killed within the first month. Shelters play a vital role in not only offering safety, but also emotional and practical support that helps victims begin to rebuild their lives. My project aims to create a space that is both secure and empowering, where recovery and hope can take root.

PROPOSAL

This project proposes a women and children’s shelter rooted in social design and trauma informed principles. Inspired by research into how space can support recovery and empowerment, the design moves beyond simply meeting physical needs. It will recognise that survivors of domestic abuse require emotional safety, social connection, and opportunities for personal growth just as urgently as food or shelter. By integrating insights from Maslow’s Hierarchy of Needs through a trauma informed lens, the space will foster healing, learning, and a sense of community.

The shelter is envisioned not just as a refuge, but as a movement, offering women and children a place to reclaim agency, rebuild identity, and find collective strength. Influenced by historical examples like department stores that empowered women in public spaces, the design challenges traditional shelter models by emphasising empowerment, creativity, and leadership.

CONCEPT

REVOLT

Revolt is not just a space, it is a movement. Designed as a sanctuary for empowerment, innovation, and collective strength, Revolt provides women with the tools, community, and confidence to disrupt the status quo. Through curated programs, workshops, and networking opportunities, we cultivate leadership, creativity, and activism. This is where ideas spark, voices rise, and action ignites. Revolt is the revolution, a place where women redefine power on their own terms.

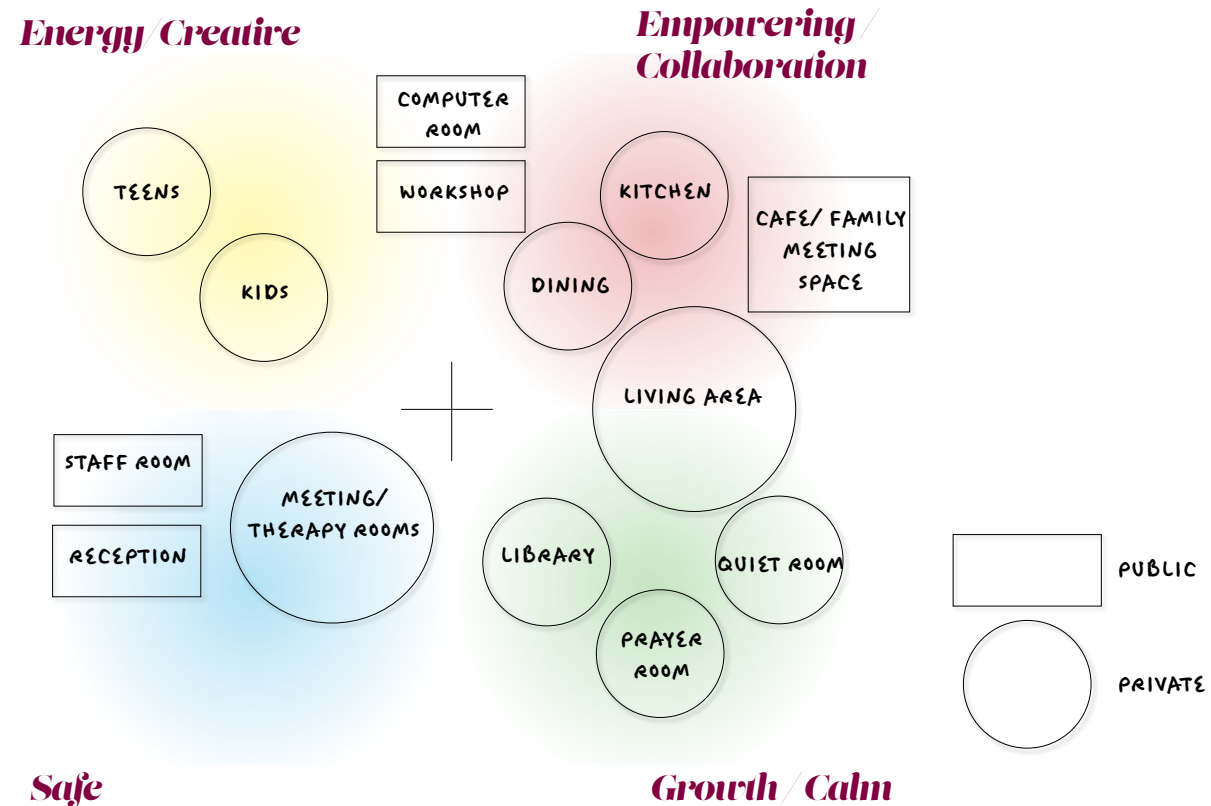
EMPOWERMENT

CONNECTION

STRONG

MOVEMENT



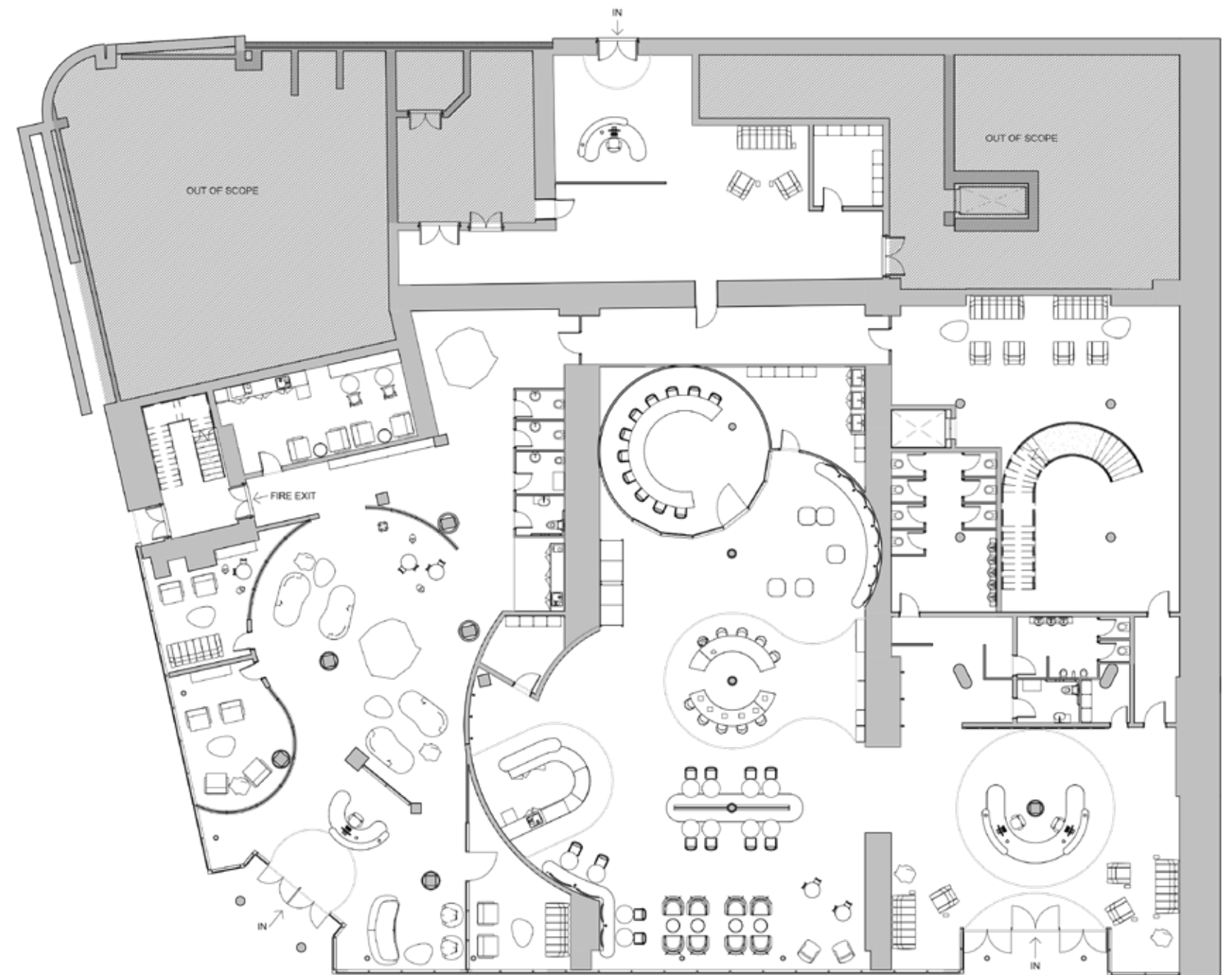


ADJACENCIES BASED ON EMOTIONAL RESPONSE AND FUNCTION

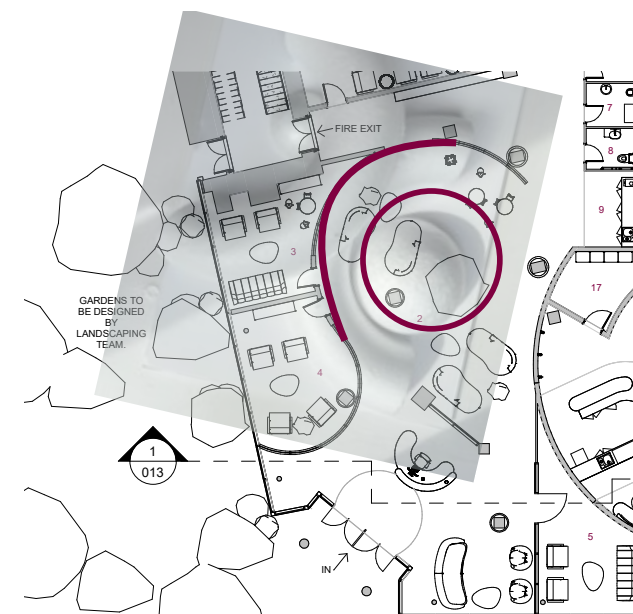
The space needed to accommodate specific functions that support the rehabilitation of women and children. This diagram helped me visualise how spaces relate to emotional responses and functional needs, as well as the distinction between private and publicly accessed areas.

RESEARCH:

Research into social design indicates that when designing spaces for individuals who have experienced trauma, it is important not only to meet their basic needs such as access to food, sleep, and safety, but also to support their long-term goals and emotional wellbeing. Drawing on Maslow's hierarchy of needs and research of its application for trauma survivors, physiological and safety needs may become intertwined or reordered. Effective support and sustained rehabilitation should be personalised to the individual, recognising the unique pathways and needs of each person.



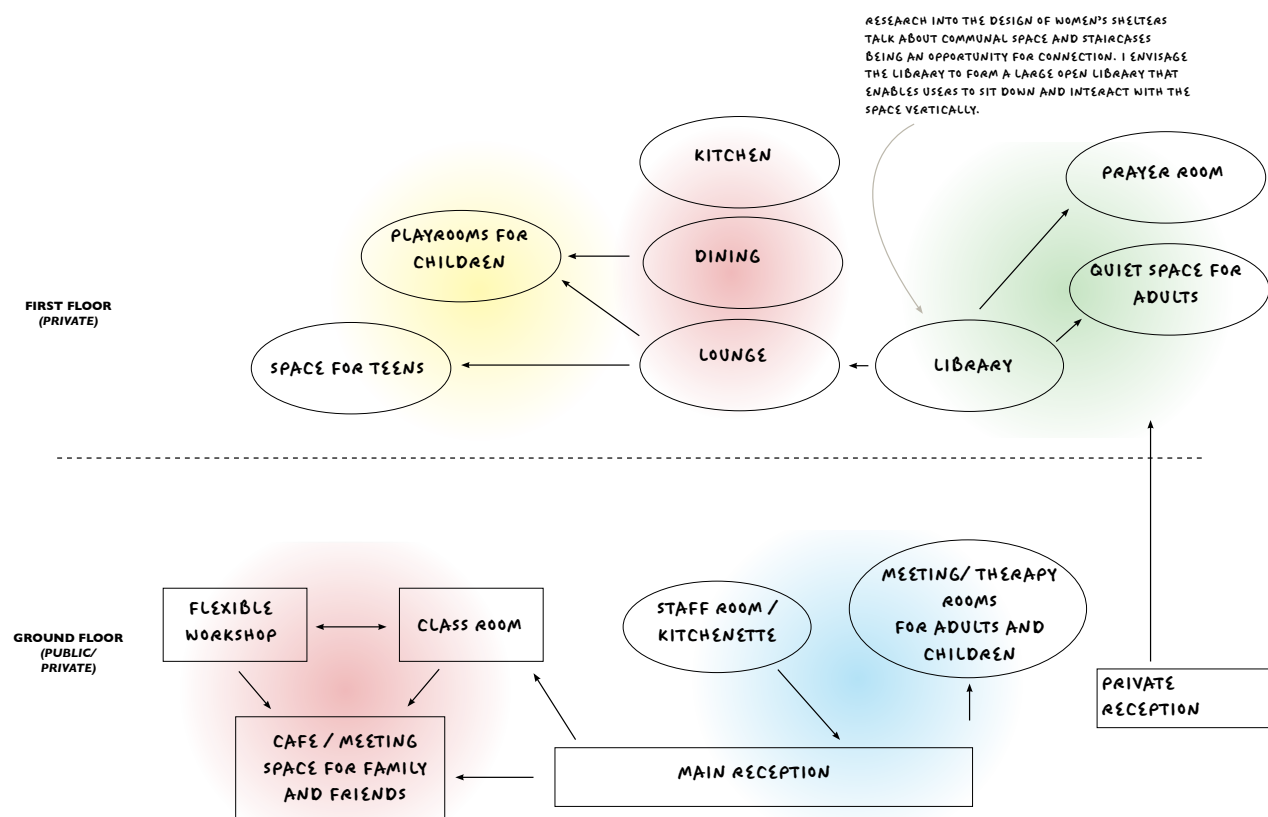
Skills: Revit



GROUND FLOOR PLAN

FUNCTIONS:

- Main Reception
- Cafe and Seating Area
- Workshop
- Adult Education Classroom
- Therapy / Counselling Rooms with Reception
- Private Reception



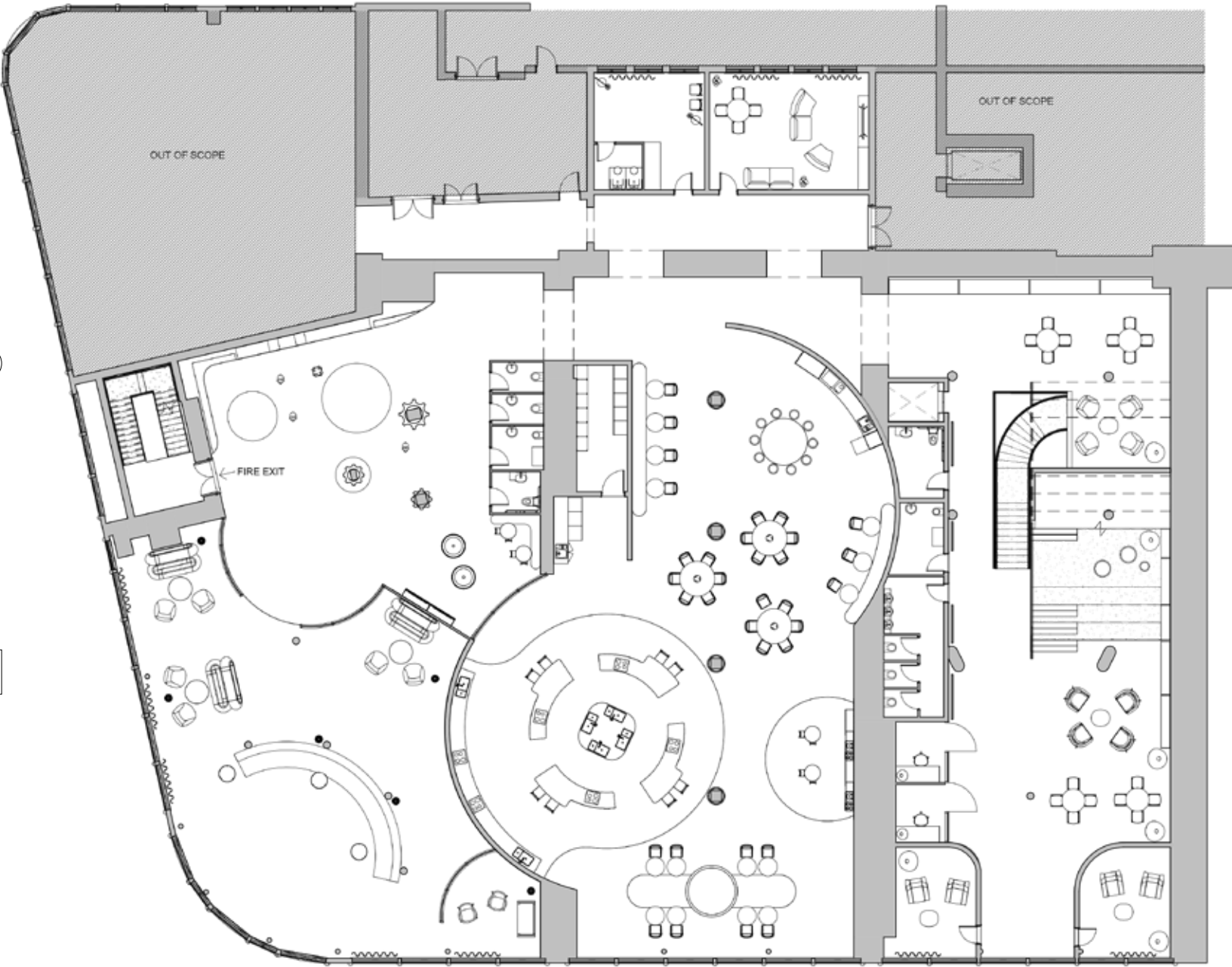
**ADJACENCIES BASED ON
TRANSITION BETWEEN
EMOTIONS AND PRIVACY**

By assigning a colour to each intended emotional response, I was able to consider users experience and transition between functions. Additionally I was able to consider how private and public spaces can be separated between the ground floor and first floor.

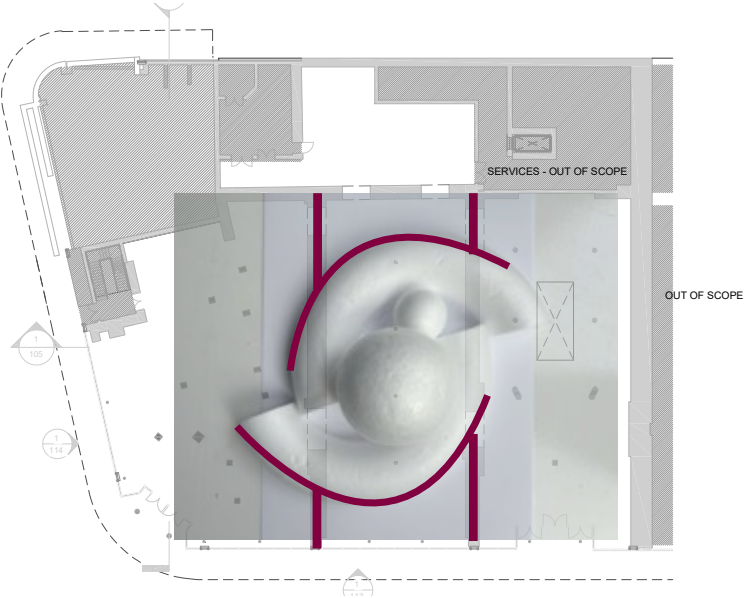
This layout also incorporated a site analysis of the location and building orientation to determine sunlight and views of the surrounding area.

CONSIDERATIONS:

- Reimagine the existing architecture while preserving structural integrity.
- Ensure vertical alignment of building services between the ground and first floors.
- Apply the design concept to shape architecture that fosters community gathering.



Skills: Revit



FIRST FLOOR PLAN

- FUNCTIONS:**
- Library
 - Computer Rooms
 - Quiet/Mediation Area
 - Kitchen
 - Dining Room
 - Children's Play Area
 - Lounge
 - Prayer Room
 - Teen Room

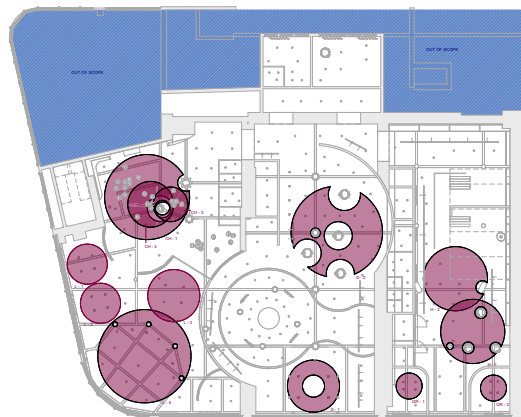
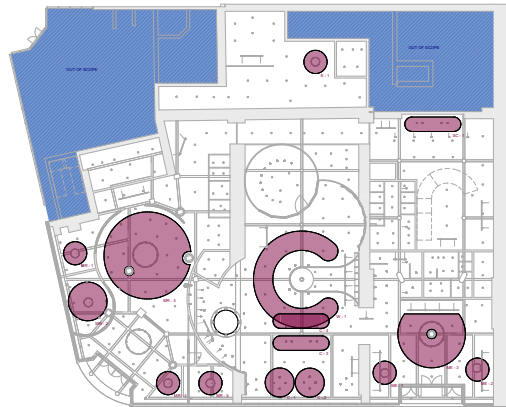
MATERIAL SAMPLE BOARD

COLOUR AND MATERIALS APPLICATION:

To support navigation of the space, designed to help residents feel empowered and regain a sense of independent autonomy.

To evoke emotional responses, using colour to influence how the space feels and supports its users emotionally.

Use only sustainable materials.



REFLECTED CEILING PLAN

SUSPENDED TEXTILE DROPS

To unify the spatially limited building and embody the concept of Revolt, semi-transparent textile drops were suspended from the ceiling, referencing Manchester's rich textile history while softening the structure's rigid features to create a more human, tactile environment. These symbolic textiles act as spatial markers and visual metaphors for reclaiming space, subtly connecting different zones while allowing users to navigate and define the space freely.



A green palette has been used in areas designed to feel calming and quiet, supporting emotional regulation and a sense of safety for residents. Green is often associated with nature, growth, and healing, making it especially appropriate for spaces intended for rest, reflection, or therapeutic activities.

This palette has been paired with natural wood finishes and a soft cream base, which bring warmth and texture. The combination helps to create a cohesive environment that encourages relaxation and a sense of stability throughout the space.

THERAPY ROOMS

GROUND FLOOR

Skills: Revit, Enscape, Adobe Photoshop



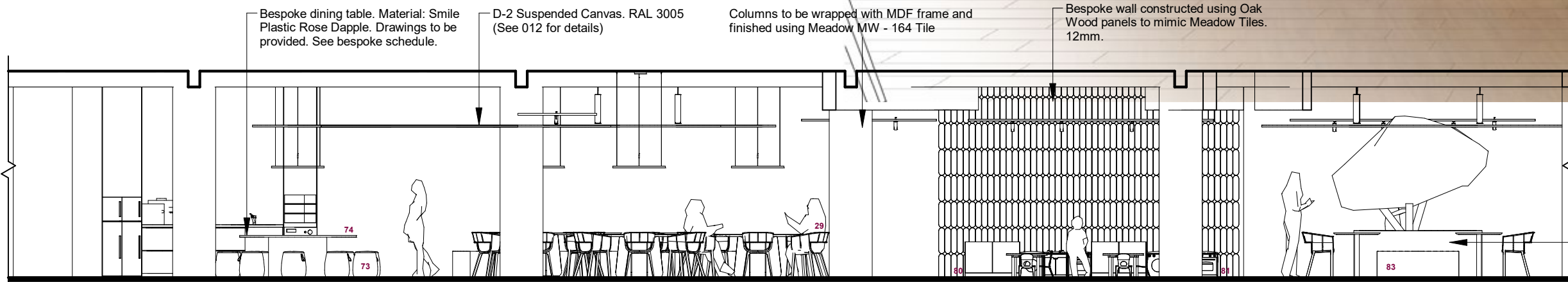
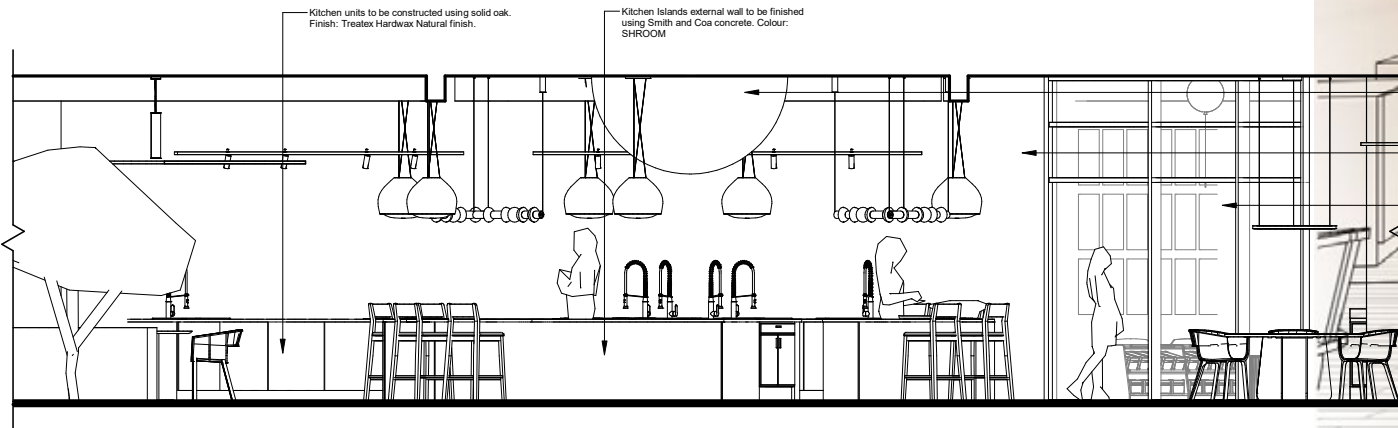
MAIN RECEPTION
GROUND FLOOR



STAIRCASE/LIBRARY
FIRST FLOOR



KITCHEN AND DINING
FIRST FLOOR



KITCHENETTE

DINING AREA

CHILDRENS KITCHEN PLAY AREA

DINING AREA

Bespoke planter and seating. Drawings to be provided. See Bespoke Furniture Schedule.



Purple and pink have been used as they are colours that embody empowerment. These tones are featured in spaces designed to create a sense of community, social interaction, and the development of new skills, supporting a sense of empowerment and belonging.

To create a sense of cohesion throughout the design, these bold colours are balanced with complementary tones such as creams and natural wood finishes, adding warmth and softness to the overall environment. This balance ensures that the spaces feel both uplifting and calming.



Skills: Revit, Enscape, Adobe Photoshop



Skills: Revit, Enscape, Adobe Photoshop

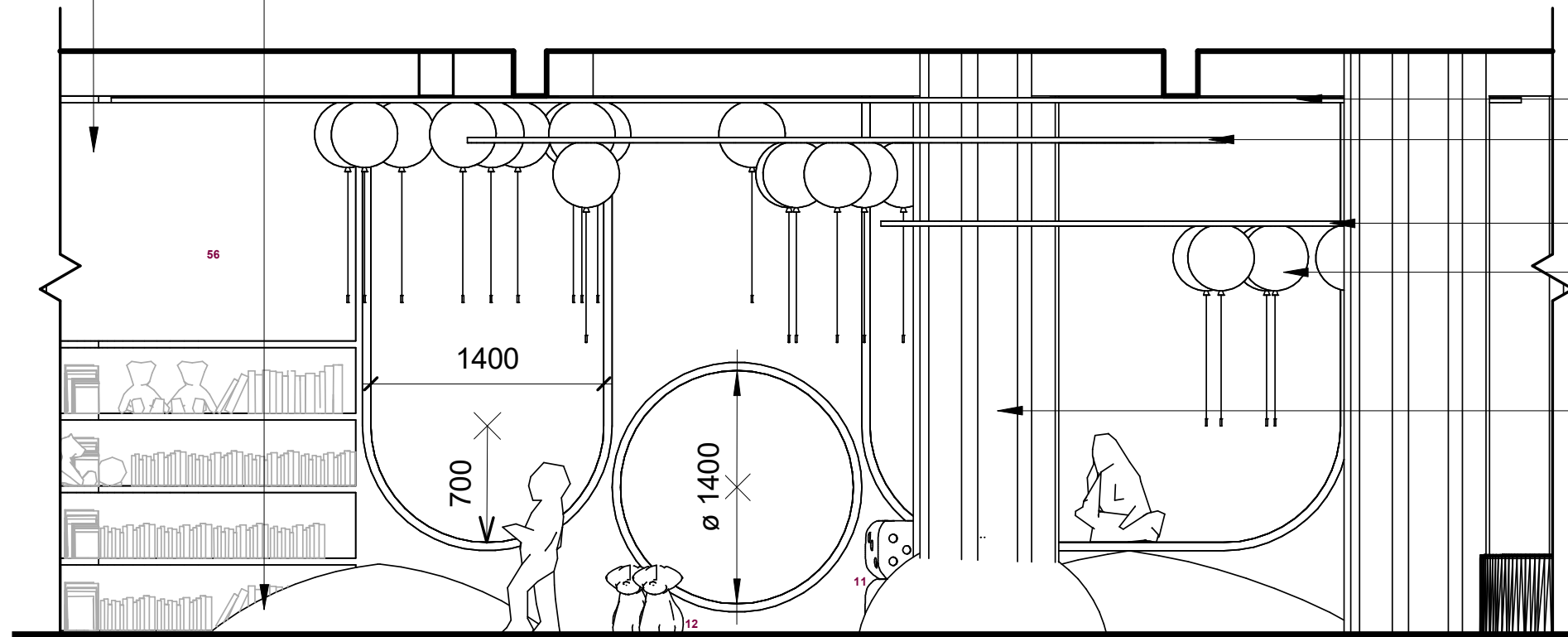
Yellow has been chosen to create a fun, creative, and playful environment that supports the development and well-being of children within the space. It brings warmth and energy, helping to make these areas feel inviting and stimulating.

Green has been used in elements that mimic nature, such as grass inspired seating and a hanging canopy that creates the feeling of being beneath trees. These features are both educational and playful, encouraging exploration and a connection to the natural world with reference to the Reggio Emilia design concept.

Additionally, the use of yellow helps with the visual identification of children's spaces within the shelter, making them easily recognisable and distinct from other areas.

Drawings for bespoke seating and storage unit to be provided.

Bespoke intergrate floor seats. Drawings to be provided. See Bespoke Schedule for details.



CH-1 Suspended Canvas. RAL 6002 (See 012 for details)

CH-2 Suspended Canvas. RAL 6002 (See 012 for details)

CH-3 Suspended Canvas. RAL 6002 (See 012 for details)

Brokis Balloon Pendant. See Lighting schedule for details.

Column wrap. Material: Oak Wood. Drawings to be provided.

Skills: Revit

KITCHEN AND DINING FIRST FLOOR

02.

PROJECT OVERVIEW

CLIENT

Kuro-Bo

LOCATION

Great Marlborough Street, London, UK

THE BRIEF

The brief is to design a staircase that connects the ground floor to the basement level within a previously developed retail space I designed for future retail in 2044 The staircase should be more than just a functional element, it must integrate seamlessly with the overall design concept, contributing both aesthetically and practically to the user experience.

The design must consider spatial constraints, circulation flow, and accessibility, while complying with all relevant building regulations and safety standards. Material choices should reflect the wider design language of the project and be selected with sustainability, durability, and visual impact in mind.

This staircase will serve as a key transitional element in the space and should be designed with care, precision, and creativity to enhance the architectural narrative of the project.

PROPOSAL

The aim is to redefine traditional retail by creating an immersive, sustainable environment that reflects Kuro-Bo’s identity and values. Guided by the brand’s commitment to social, environmental, and ethical responsibility, the space will act as both a store and a platform for education, connection, and community. Inspired by the story and materiality of Kuro-Bo’s binochan charcoal; formed through the elements of fire, water, air, and earth, the design will use natural, innovative materials to foster a deep sense of place and reconnection with nature. Reflecting Soho’s creative spirit and diverse population, the space will offer flexible areas for events and interaction, supporting both the local community and future generations through thoughtful design that goes beyond commerce.

CONCEPT

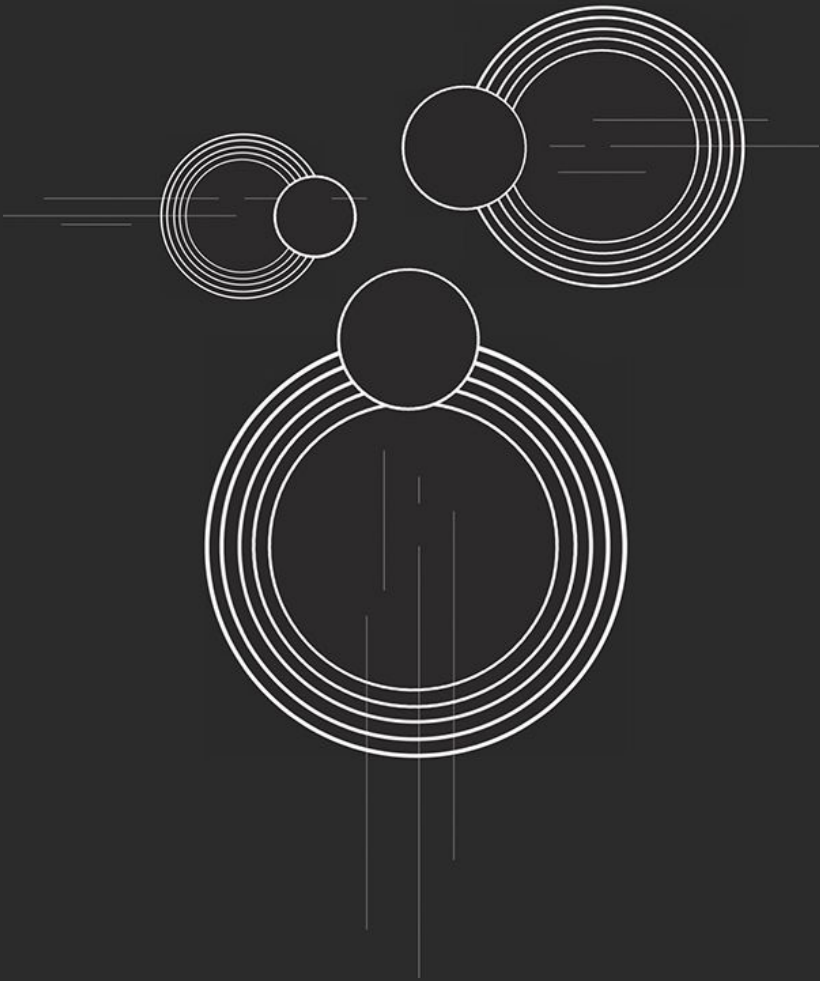
GODAI CONVERGENCE

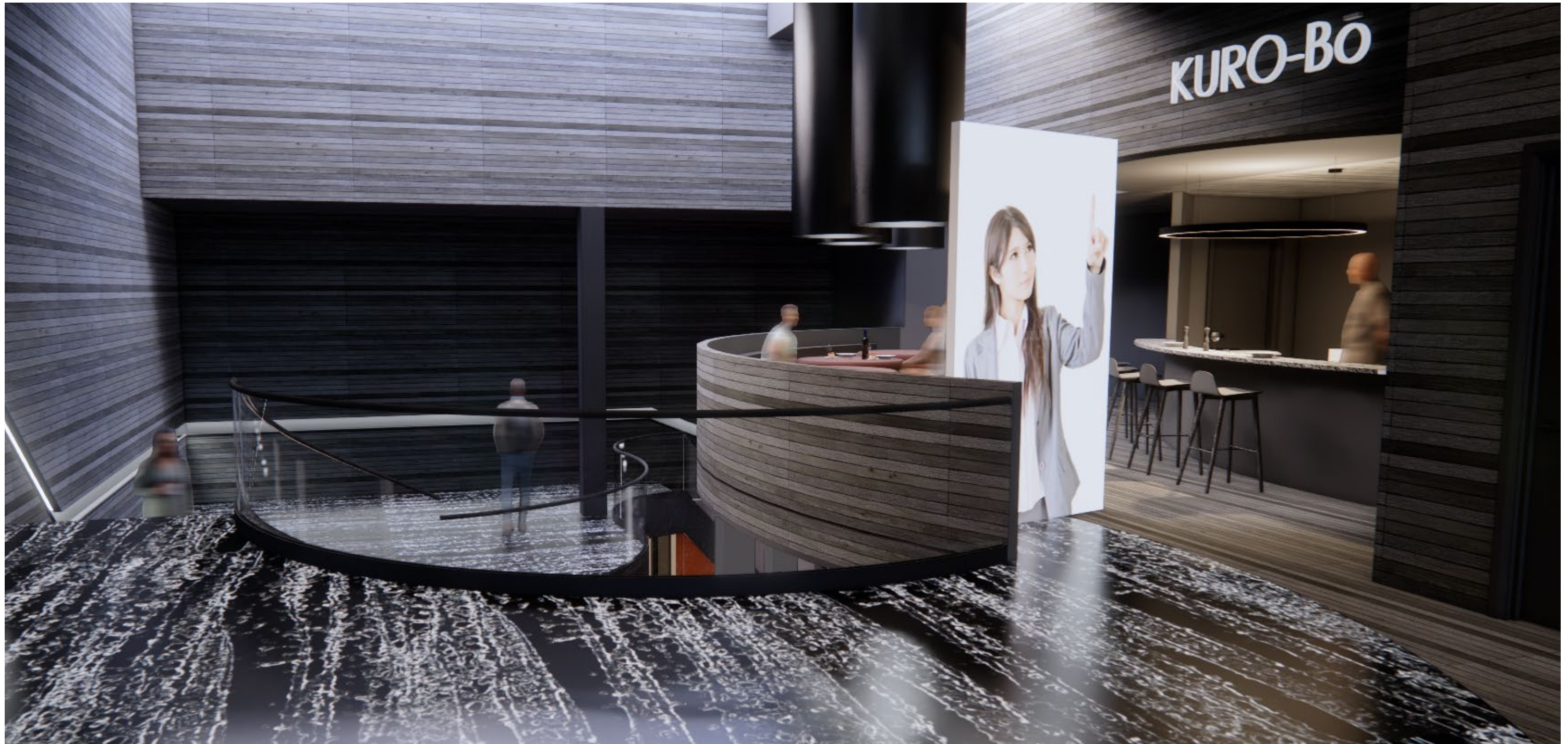
“Godai Convergence” is a design concept inspired by the Japanese philosophy of “Godai,” which refers to the five elements: Earth, Water, Fire, Wind, and Void. In this concept, the aim is to create harmonious spaces that seamlessly blend these elemental influences to evoke a sense of balance, tranquility, and unity.

INTERCONNECTED

JOINED

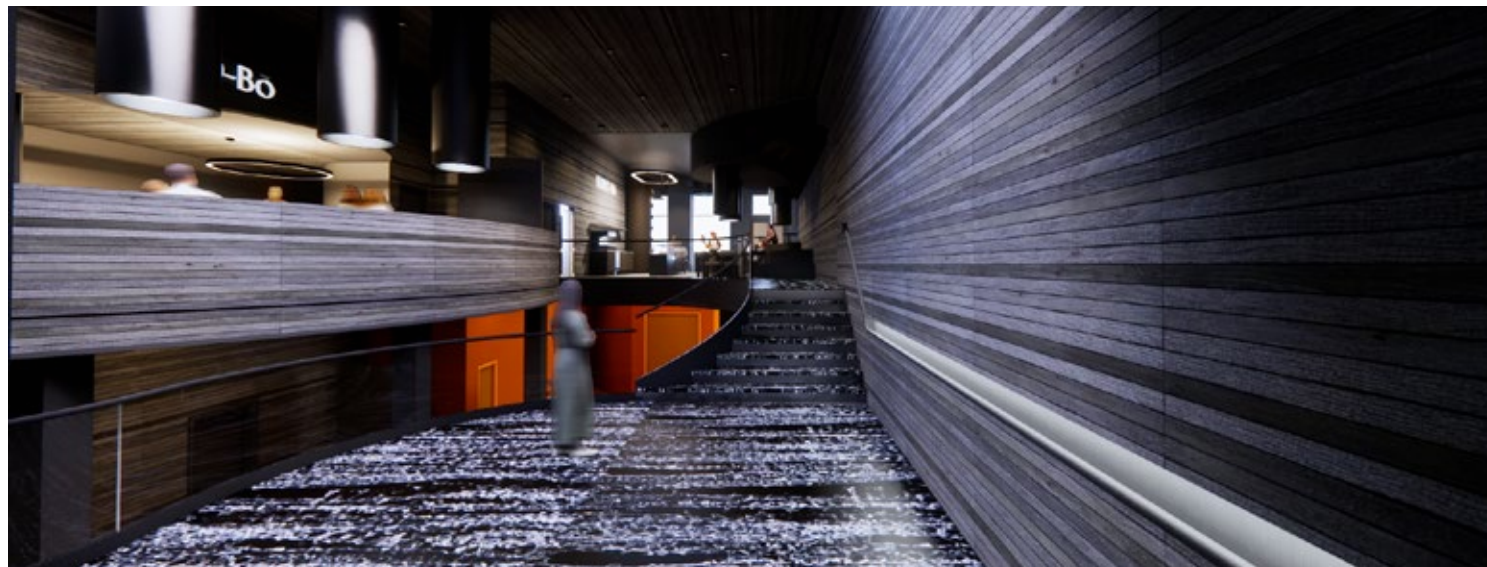
CONVERGENCE





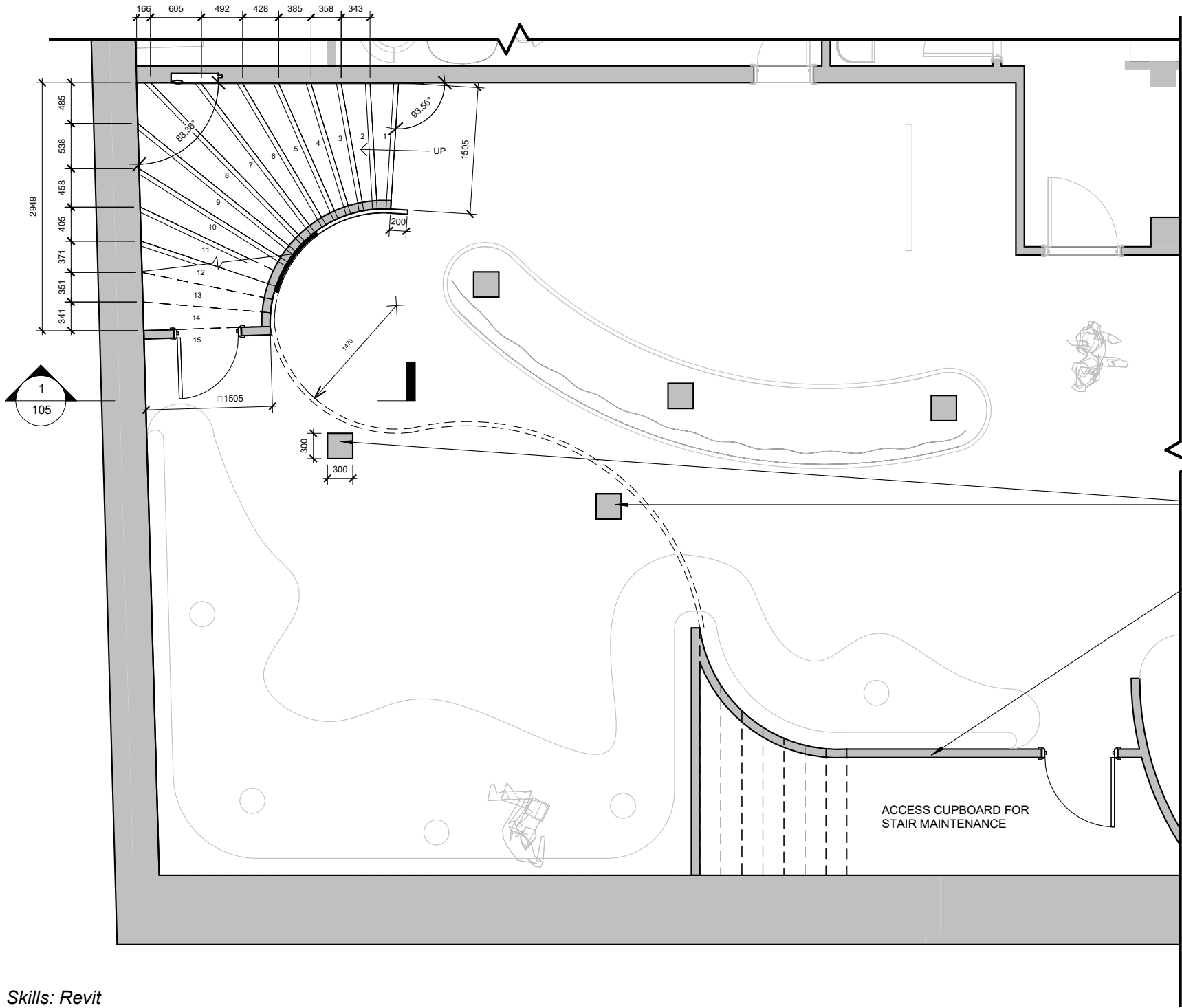
15

Skills: Revit, Enscape, Adobe Photoshop



STAIRCASE RENDER
GROUND FLOOR

CHARLOTTE
Wray

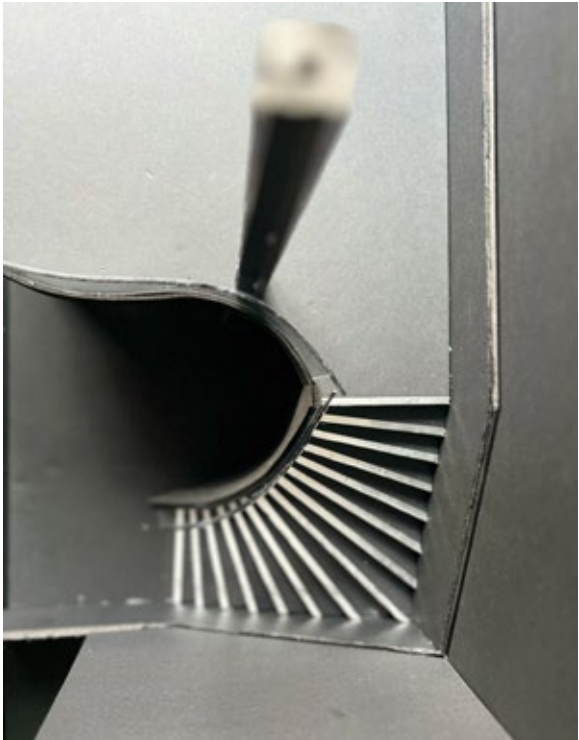


STEEL SUPPORT COLUMN, CLAD IN OAK
WOOD FINISHED WITH THERMOGUARD
TIMBERCOAT 60 MINUTE SYSTEM. REF:
T060BLACK MATT

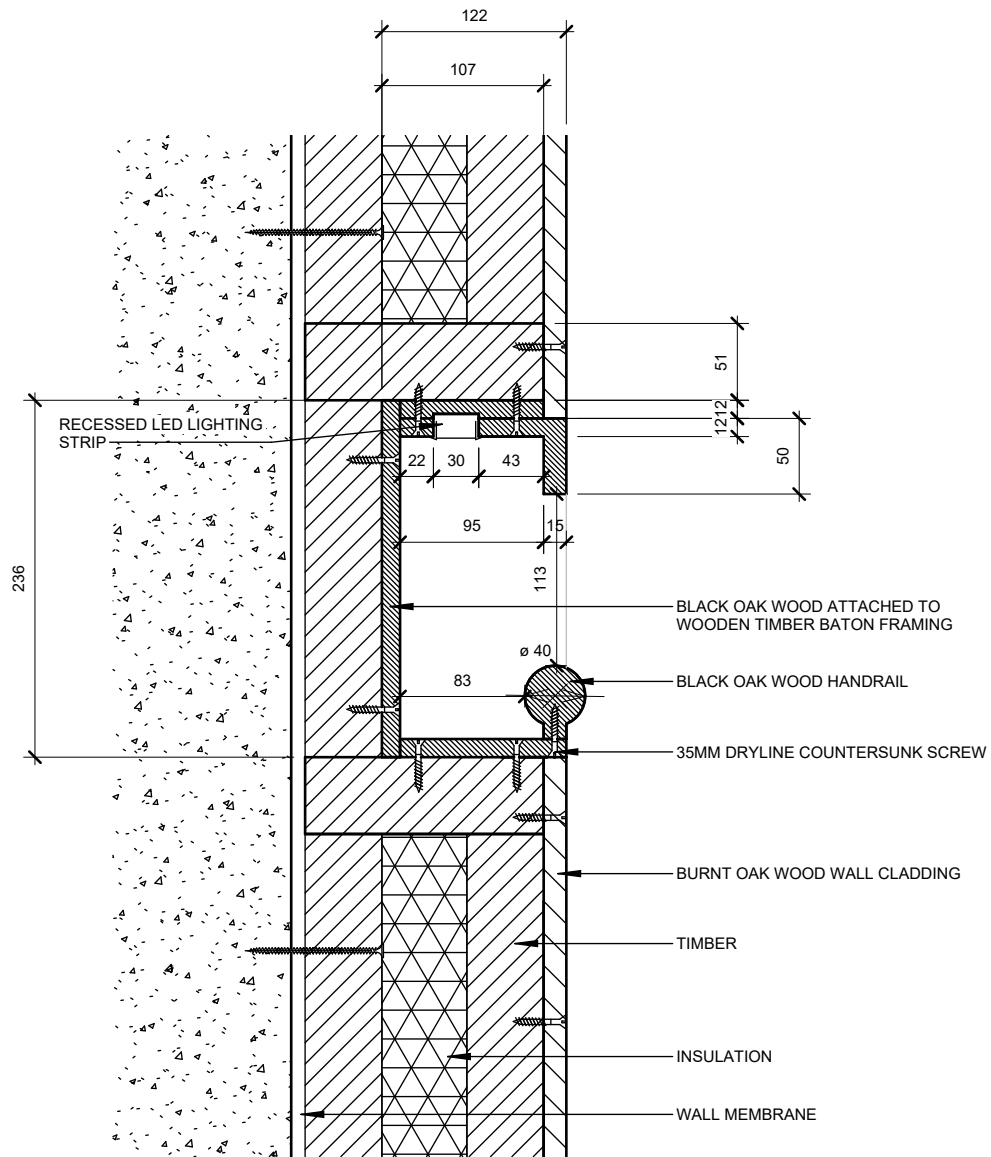
TIMBER STRUCTURE WALL TO ENCLOSE
STAIRCASE, PAINTED PLASTER FINISH:
LICK 02 MATT PAINT

Skills: Revit

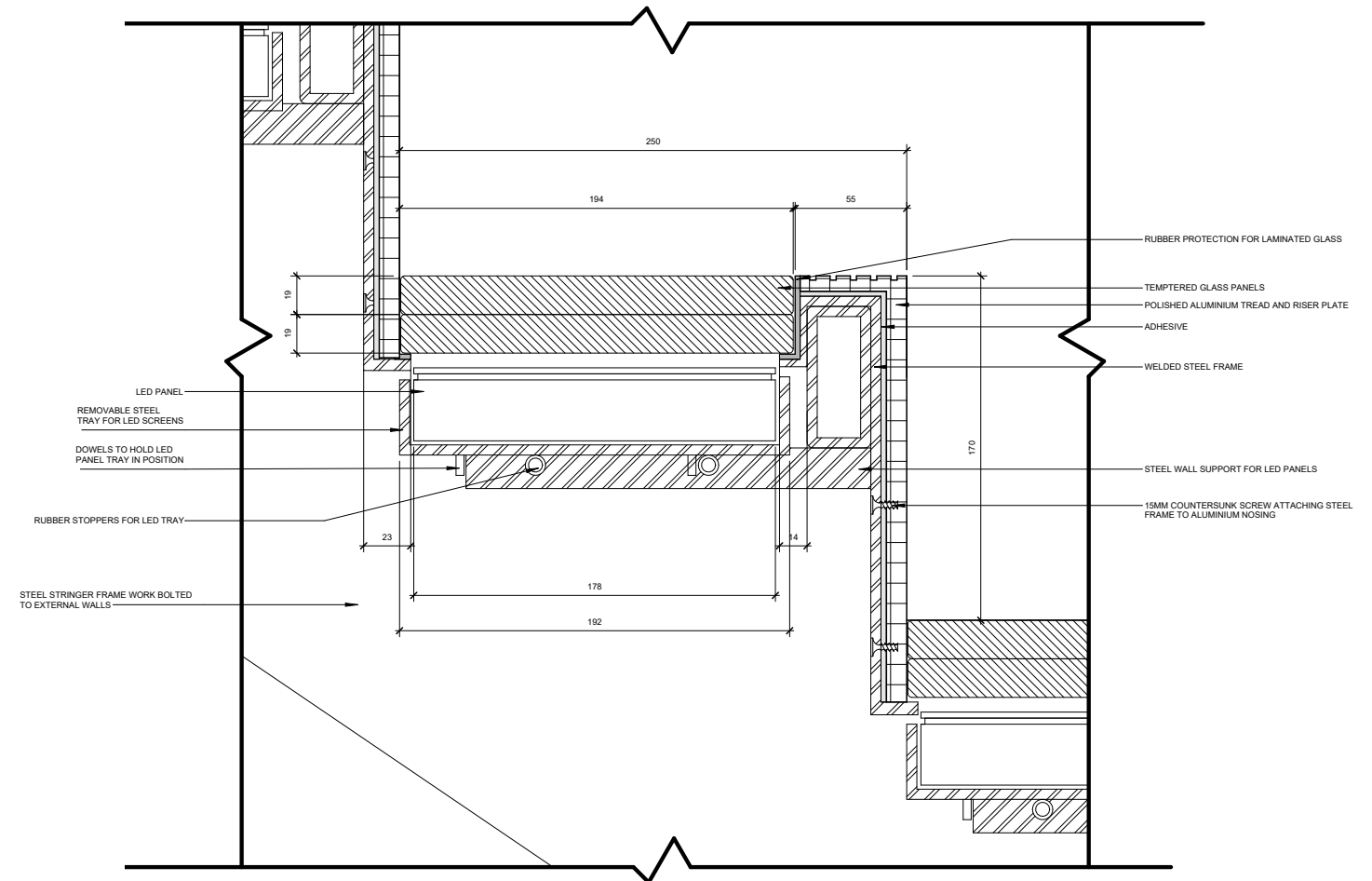
FLOOR PLAN
BASEMENT



SCALE MODEL
BASEMENT



DETAIL DRAWING
INSET HANDRAIL



DETAIL DRAWING
TREAD AND RISER

03.

PROJECT OVERVIEW

CLIENT

West Dean

LOCATION

West Dean, Visitor Centre, West Sussex, UK

THE BRIEF

To redesign and reconfigure the original Christopher Alexander Visitor Centre with a focus on drinking and dining experience. The aim is to connect West Dean students, the local community as well as visitors.

The restaurant which uses locally grown produce is the centre of a local circular economy strategy. The space is expected to be socially, economically and environmentally sustainable therefore this will be an important aspect of both the initial research and final design solution.

REQUIREMENTS

- To include a commercial kitchen.
- A chefs kitchen that will engage and educate customers.
- The design must provide 120 covers.
- A marketplace for local producers to sell products.
- A small gallery to showcase the work of West Deans heritage
- A multi functional and flexible space for events and workshops.

PROPOSAL

To create a multifunctional space that reflects the core values and identity of West Dean with a focus on its rich history and connection to the arts and crafts.

The concept ‘A Retreat in the Creating’ references the founder of West Dean; Edwards James, close relationship to the surrealist movement as well as West Deans founding principles to protect that Arts and Crafts. With reference to desire and the desire to create, the design is inspired by the beauty of the makers marks. Looking at how materials move across the canvas and what it means to be the creative, the design applies movement and shapes through sculptural elements such as seating and ceiling details as well as layout detailing and lighting.

CONCEPT

A RETREAT IN THE CREATING

This design embraces the raw energy of artistic experimentation and the freedom found in the absence of rules, reflecting a strong will to create without limitation. Inspired by the Surrealist approach of automatic creation, the space becomes an organic, fluid, and boundless environment where walls and furniture dissolve into one another, planes disappear, and the building itself transforms into a living canvas for spontaneous expression.

CRAFTSMANSHIP

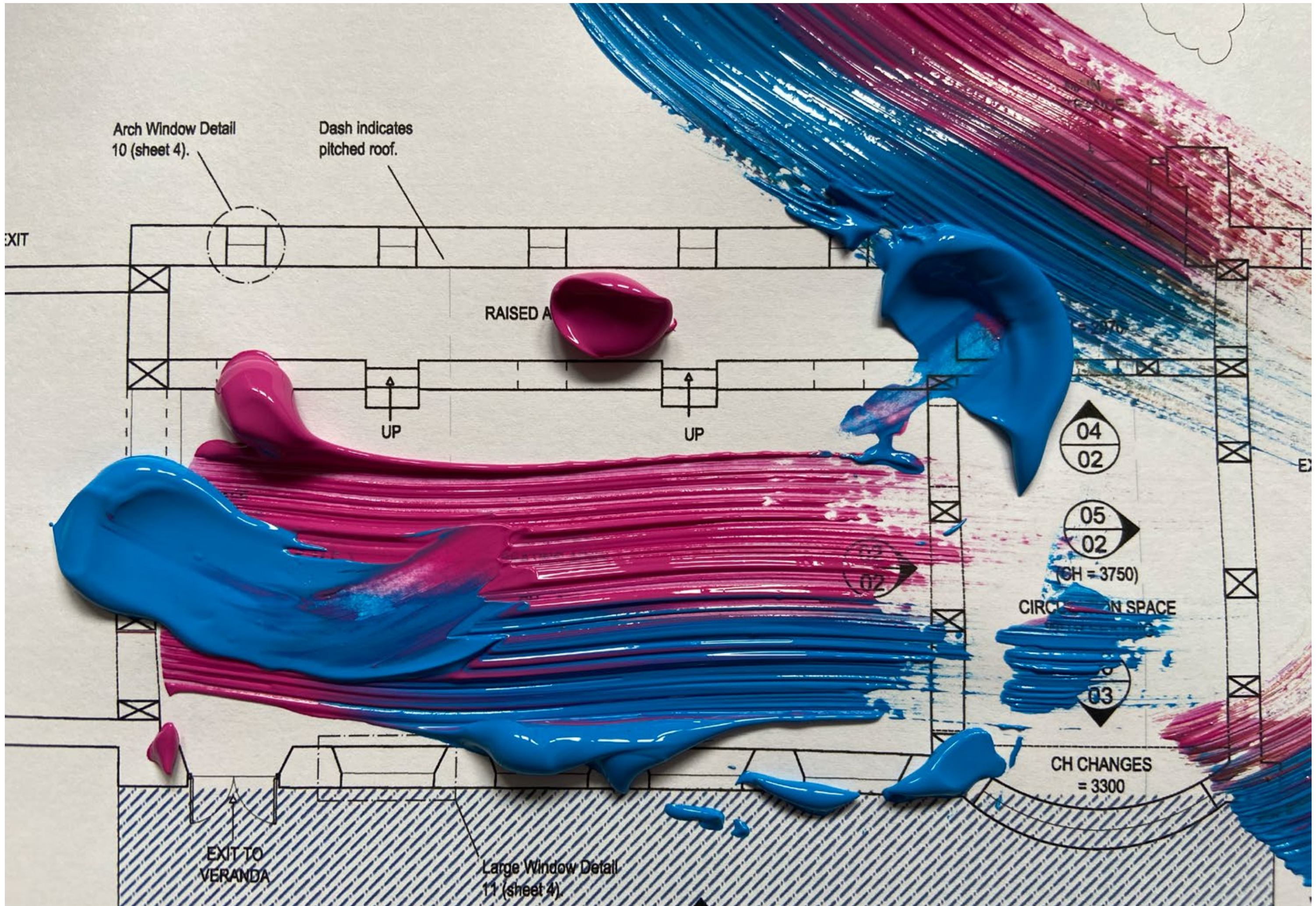
COMMUNITY

LIMITLESS

BIOMORPHIC

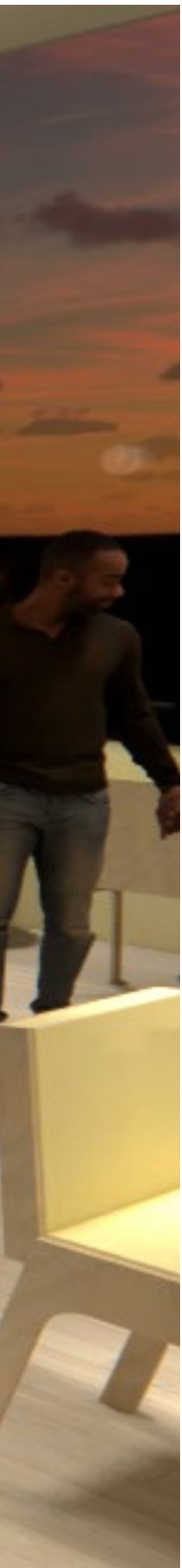
SURREAL



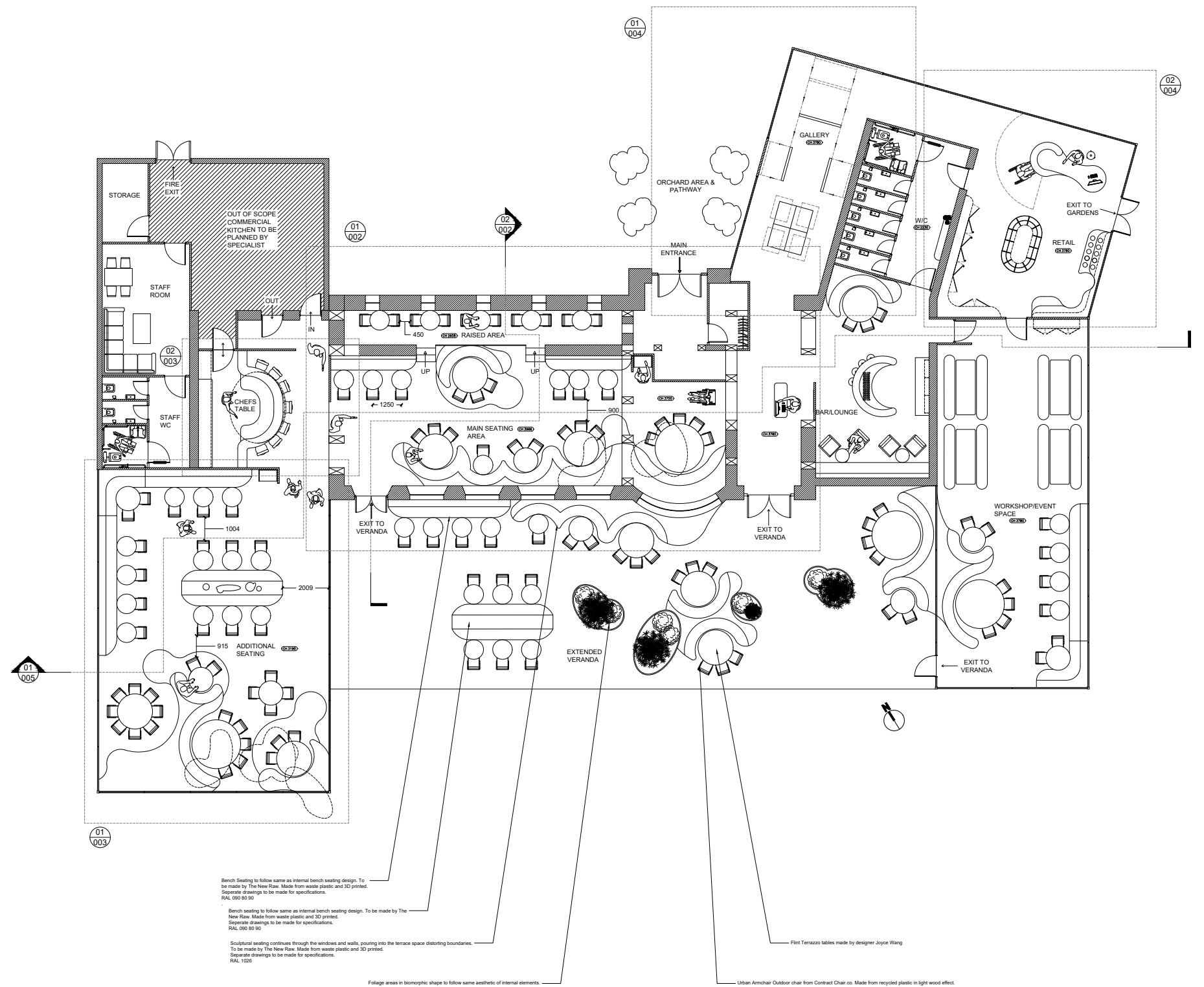




EXTENSION RENDER



MAIN SEATING AREA
RENDER



FLOOR PLAN

CHARLOTTE Wray

CHARLOTTE WRAY

T: 07837528297

E: CHARLOTTE.WRAY@HOTMAIL.COM

@CHARLOTTEWRAY_PORTFOLIO