

KLC Graduate
Garden Design Diploma

Contact
darcy.chapple@me.com

DARCY CHAPPLE PORTFOLIO

2025



01. Residential

02. Conceptual

03. Public Realm

04. Technical

05. Darcy

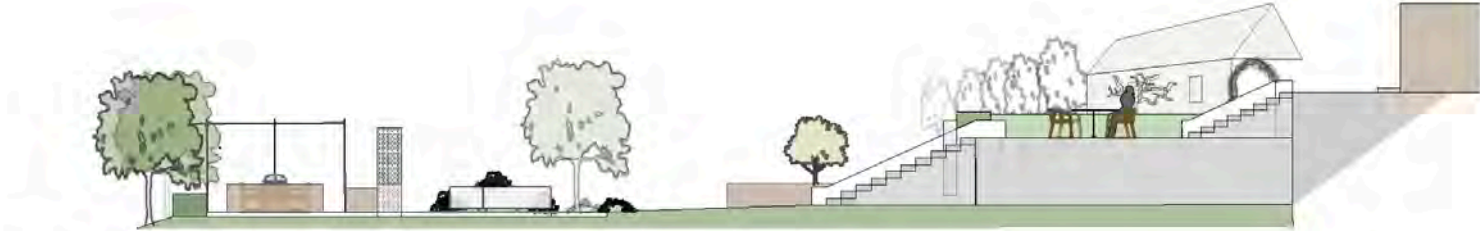
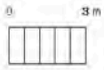
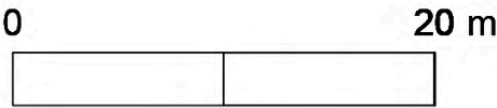


01

Residential

Historical Garden – Hurstpierpoint

1 [A3 Masterplan
Scale: 1:500



1 [Level Changes Elevation]
Scale: 1:200

Design Narrative:

A garden that celebrates the artistic beauty within the Sussex landscape. Inspired by post-impressionist painters, the design flows around framed moments of beauty within the garden and celebrates the forms of light, water and landscape within the site.

01 Raised Patio Area

View back onto house and main staircase from new gravel patio.



Concept Development

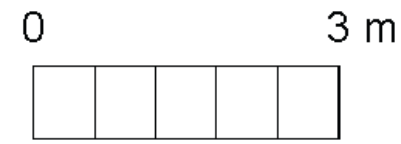
This concept collage blends sketches with planting and material references to express the garden's evolving character. It visualises early thinking around structure, mood, and rhythm in the landscape, forming the foundation for the design that follows.





Hand Renderings

Rooted in the client's bond with her garden, the design reinterpreted its existing features through an Impressionist sensibility. Hand drawings—shaped by my experience as an oil painter—capture the tone, light, and mood that guided the reimagined space.



1 [Pondside Planting] Scale: 1:100



Spring



Summer



Autumn



Winter

3X - Carex divulsa
3X - Dipsacus fullonum
3X - Deschampsia Goldgehange
3X - Athyrium filix-femina
32X - Lonicera ligustrina 'Elegant' [Hedge]

3X - Viburnum tinus Secret Village ('Lissspurp')
3X - Dipsacus fullonum
3X - Anemone x hybrida 'Honorine Jobert'

5X - Eryngium bourgatii
5X - Athyrium filix-femina
3X - Dipsacus fullonum

14X - Agastache foeniculum 'Alabaster'
6X - Pimpinella major 'Rosea'

3X - Carex divulsa
5X - Geranium 'Brookside'

12X - Pimpinella major 'Rosea'



6X - Eryngium bourgatii
5X - Anemone x hybrida 'Honorine Jobert'
3X - Athyrium filix-femina
5X - Pimpinella major 'Rosea'
3X - Rosa 'Céleste' (A)

5X - Geranium 'Brookside'
6X - Agastache foeniculum 'Alabaster'
3X - Cephalaria gigantea
7X - Dipsacus fullonum
4X - Deschampsia Goldgehange
9X - Agastache foeniculum 'Alabaster'

3X - Athyrium filix-femina
4X - Eryngium bourgatii
3X - Agastache foeniculum 'Alabaster'
9X - Pimpinella major 'Rosea'
5X - Anemone x hybrida 'Honorine Jobert'
7X - Pimpinella major 'Rosea'
3X - Athyrium filix-femina
8X - Carex divulsa
10X - Agastache foeniculum 'Alabaster'
10X - Geranium 'Brookside'

5X - Geranium 'Brookside'
7X - Agastache foeniculum 'Alabaster'

Planting: Spring, Summer, Autumn and Winter

The planting has been chosen to provide the client with year round interest. seedheads and winter structure will allow for the client enjoy her garden without too much maintenance. The garden has a mixture of densely planted beds with more loose naturalistic planting leading to the woodlands.

02

Conceptual

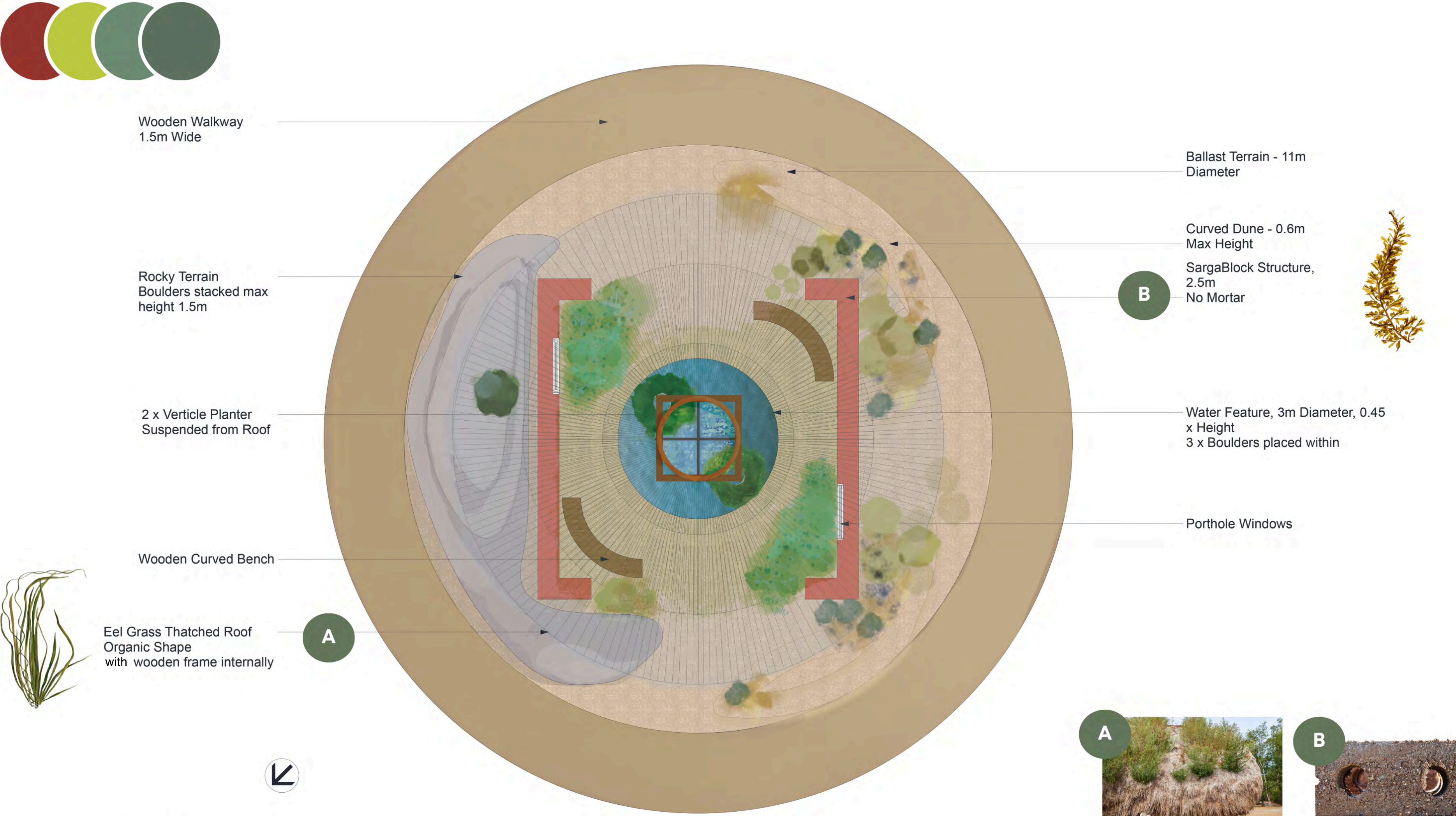
2.1 Global Impact Show Garden for the RHS Show at Hampton Court

2.2 RHS Windsor Show Garden 3rd Place – Bronze

Impact Garden

Brief: to design a Global Impact Show Garden for the RHS Show at Hampton Court.

Response: This coastal, rockery garden explores the material potential of seaweed as a sustainable and renewable solution to the resource crisis.



Eel Grass Thatch

SargaBlock

Kelp The Planet

TITLE [KELP THE PLANET]		
DRAWING NUMBER 9003	DRAWN BY Darcy Chapple	DATE 11/05/2025
SCALE 1:50	FILE NAME p3 final 1-50.vwx	



Concept development

Shaped by wind, salt, and tide, this coastal rockery garden reimagines seaweed as the material of tomorrow. Eelgrass fibres and sargassum-based building blocks anchor the space with bio-based innovation, while coastal vegetation weaves through stone and suspended planters. The designs evolved to better demonstrate coastal plantings, rocky terrain, and hanging planters evoke the resilience of shoreline ecosystems and imagine new possibilities for climate-conscious design.

2.1 Final Mockup

Sketchup and Photoshop





‘Weave with Nature’ explores the connection between patterns in nature and traditional weaving.

Inspired by the colours and textures of the King Charles III tartan, the garden uses naturally dyed fabric woven through planting to reflect this bond. Plants are chosen for their use in natural dyes or their colour relevance.”

Royal Windsor Flower Show 2025
Bronze award - Garden Makers



Indigofera heterantha provides blue tones, once used for indigo dye. Grasses echo the blues and greens of tartan, while accent flowers introduce vibrant reds.

Mahonia eurybracteata ‘Soft Caress’ adds structure and nods to the dye potential of its autumn berries, creating a rich, living tapestry of craft and nature.

03

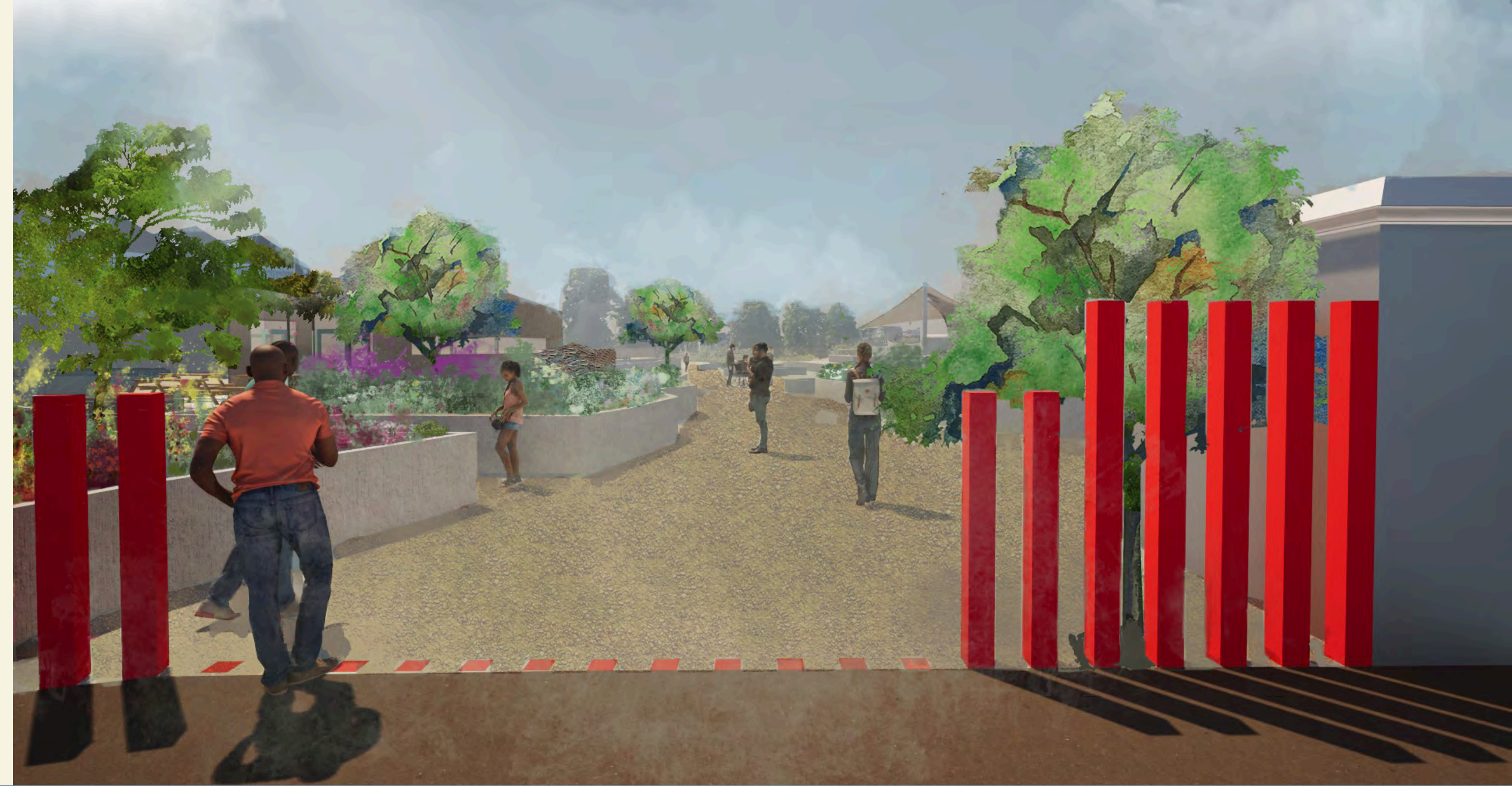
Public Realm

Brief: Design a flexible community space for Nomadic Community Gardens, the Shoreditch non-profit dedicated to transforming disused land into productive and creative community gardens. The space should support food-growing, art-making, and skill-sharing while enhancing local biodiversity and reflecting the charity's grassroots, cultural ethos.

03

Pathways

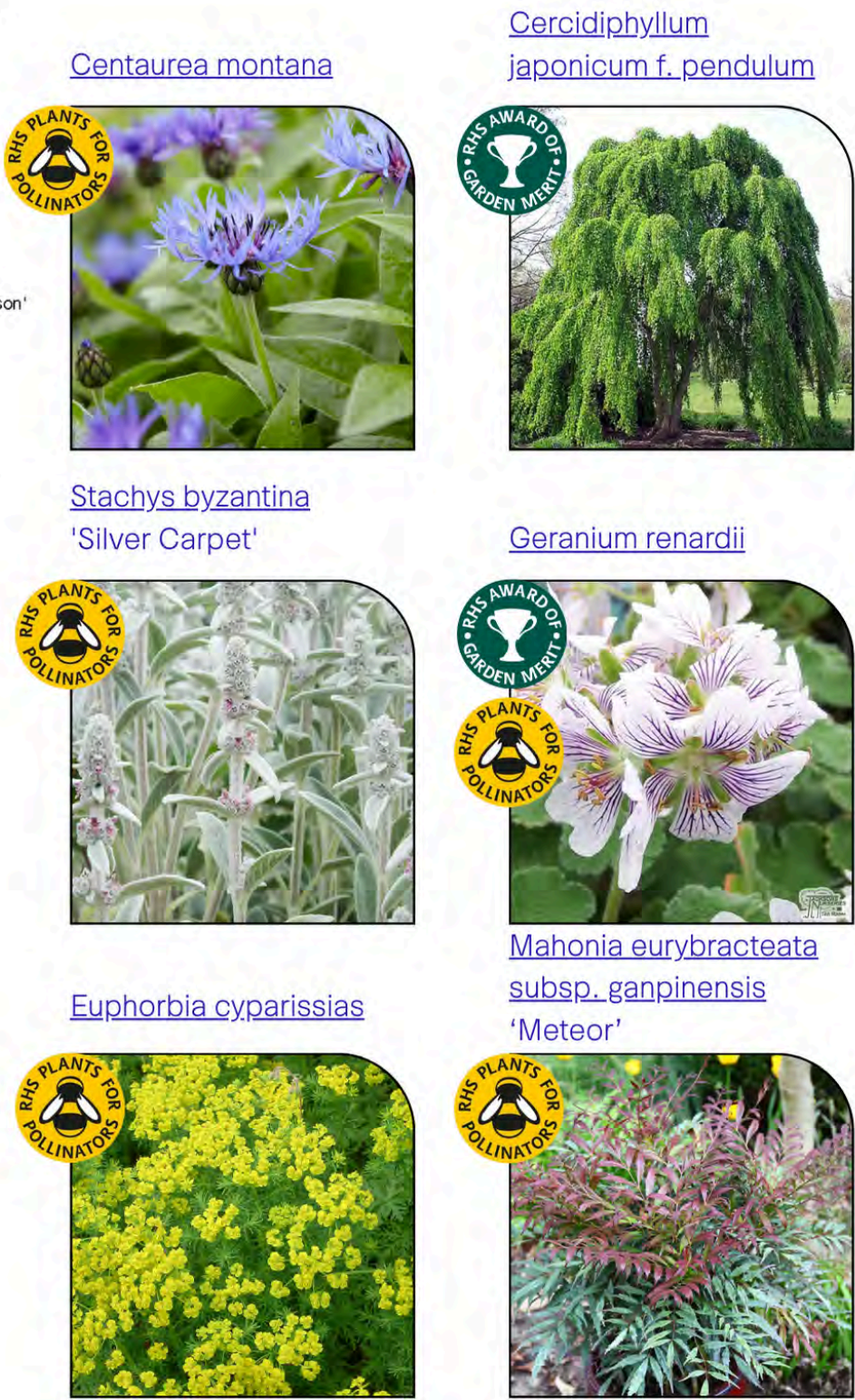
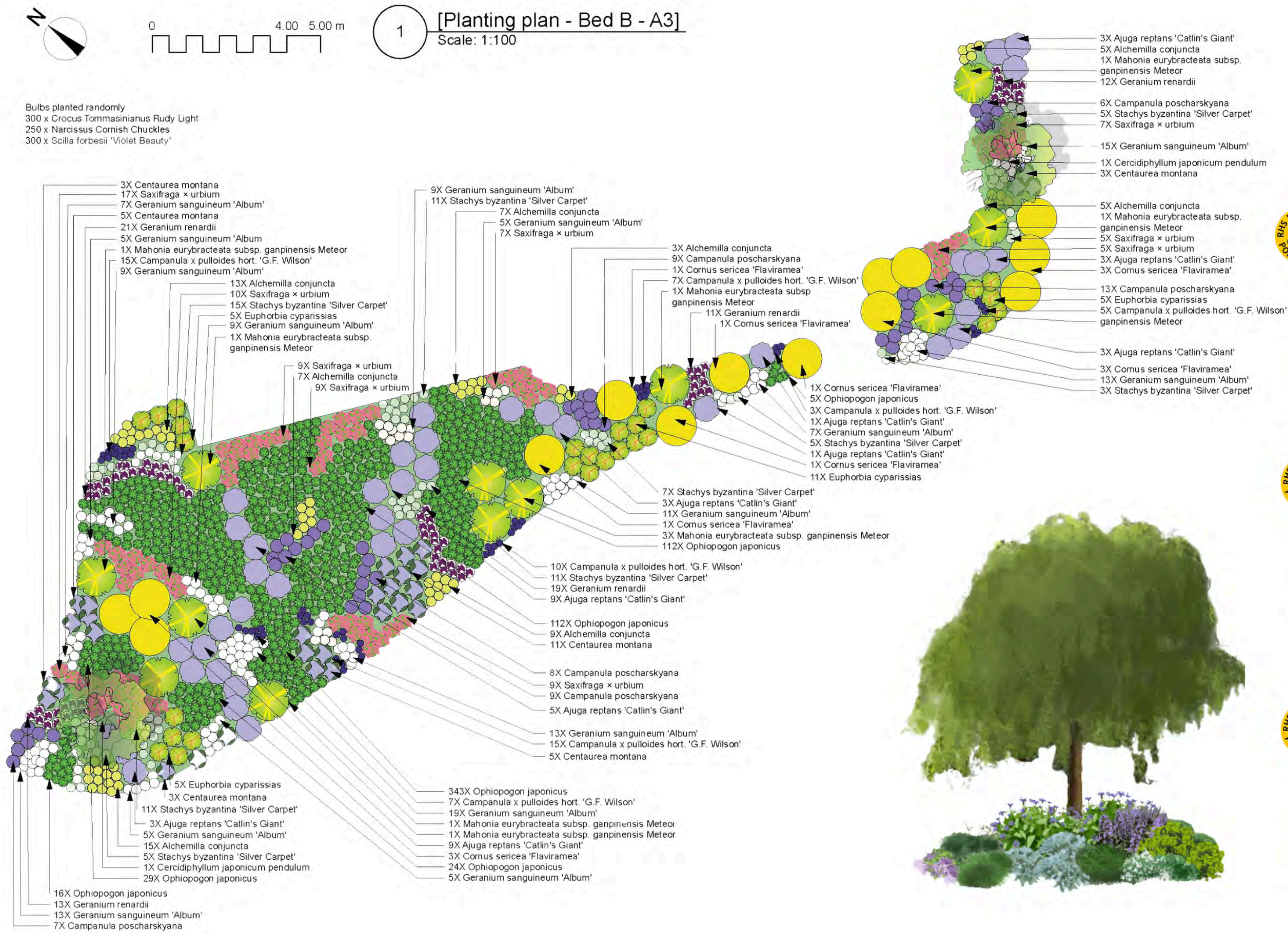
Pathways is not only a place to move through but also a place to pause, connect, and grow— celebrating community and the environment in equal measure. A network of pathways leads visitors through spaces for growing and learning, a greenhouse café, central stage, wellness gardens, playground, gallery, and woodland walk.



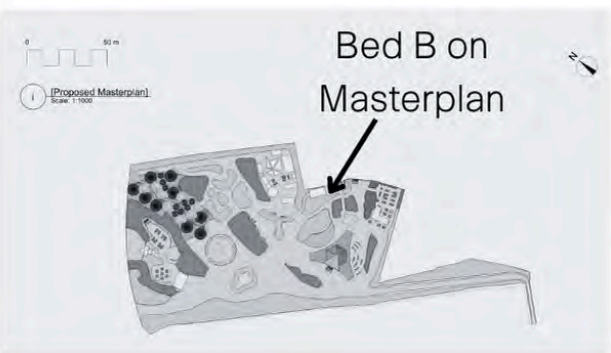


Planting Plan

Planting plan, elevation and schedule. Planting was chosen to attract pollinators, allow visibility around the site and have structural forms and colour throughout the seasons.



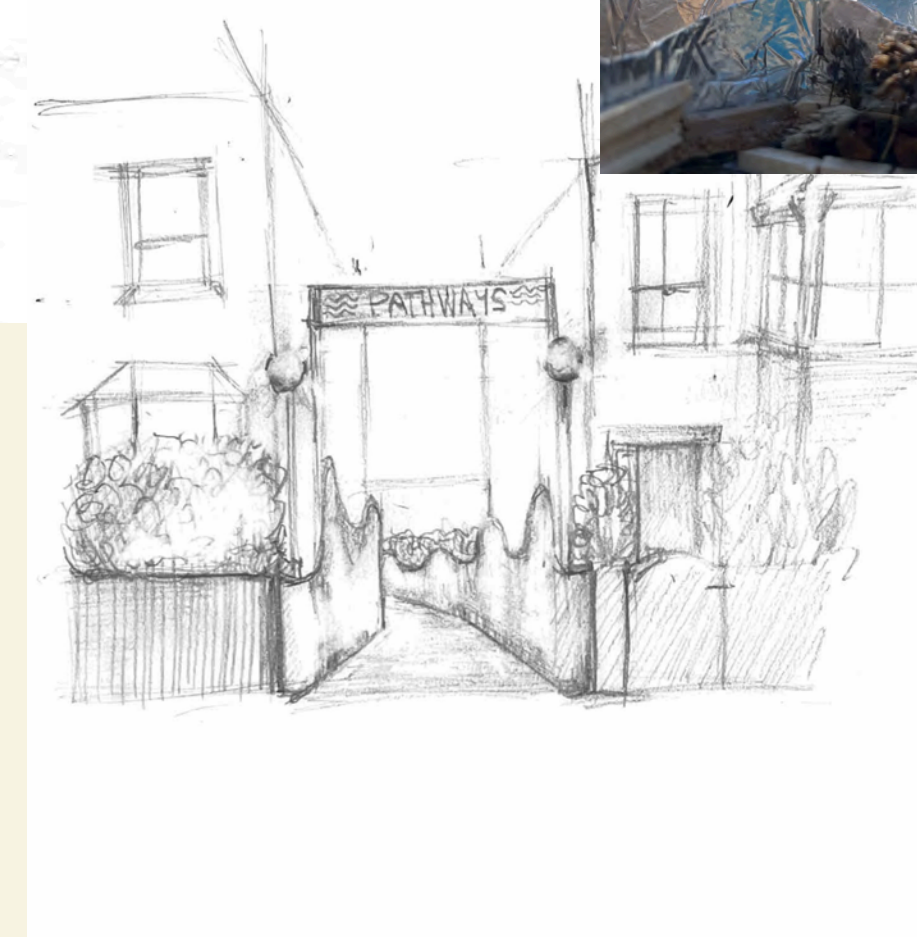
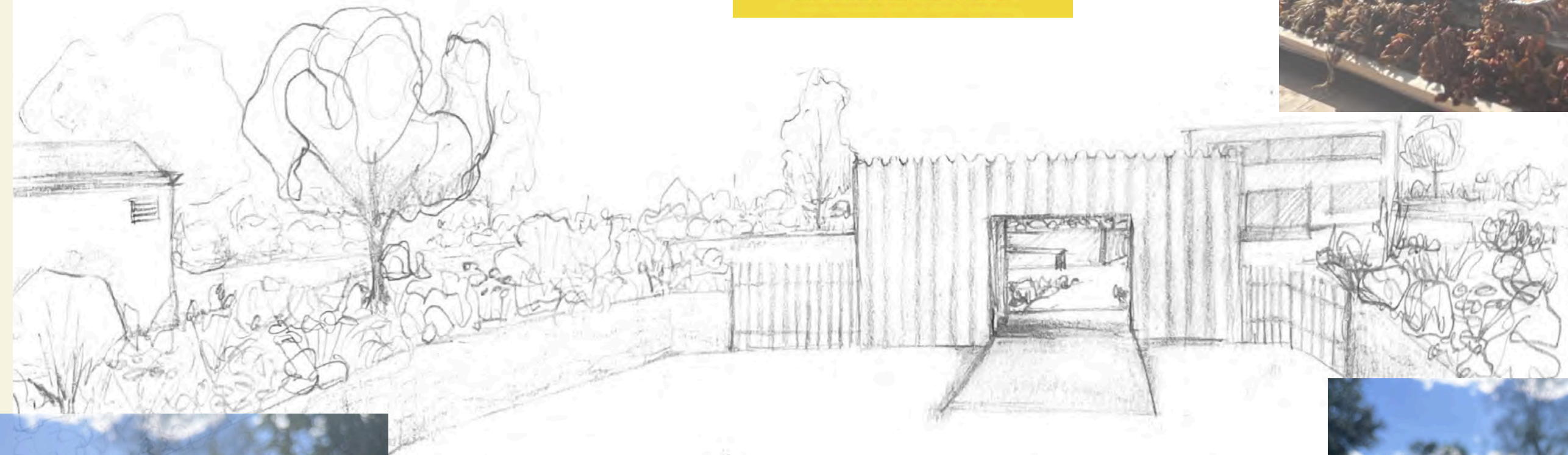
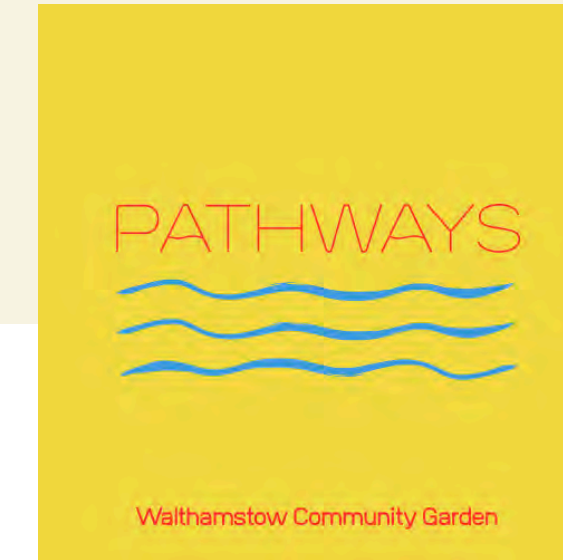
Plant Name	Category	Size	Height	Quantity	Suggested Supplier
Cercidiphyllum japonicum 'pendulum'	Tree	3L Single Stem	60cm, 5cm Girth	x2	Bluebell Arboretum
Cornus sericea 'Flaviramea'	Shrub	0.5L		x14	Bally Roberts
Mahonia eurybracteata 'Meteor'	Shrub	3L		x12	Hillier
Ajuga reptans 'Catlin's Giant'	Perennial	1L		x40	Beth Chatto
Alchemilla conjuncta	Perennial	1L		x64	Beth Chatto
Campanula poscharskyana 'Stella'	Perennial	1L		x39	Bluebell Cottage
Campanula x pulloides hort. 'G.F. Wilson'	Perennial	9cm		x55	Edrom Nurseries
Centaurea montana	Perennial	9 cm		x30	Claire Austin
Euphorbia cyparissias	Perennial	1L		x26	Beth Chatto
Geranium renardii	Perennial	9cm		x57	Claire Austin
Geranium sanguineum 'Album'	Perennial	9cm		x145	Claire Austin
Saxifraga x urbium	Perennial	9cm		x78	MacPlants
Stachys byzantina 'Silver Carpet'	Perennial	1L		x73	Beth Chatto
Crocus Tommasinianus 'Rudy Light'	Bulb			x300	Peter Nyssen
Narcissus Cornish Chuckles	Bulb			x250	Peter Nyssen
Scilla forbesii 'Violet Beauty'	Bulb			x300	Peter Nyssen
Ophiopogon japonicus	Grasses	0.5L		x641	Bally Roberts



Concept Development

The design proposes tackle the brownfield site by repurpose as much material as possible on site such as crushed concrete and stone to be used as planting material and cleared vegetation to help build the habitat waves.

This walkway is constructed with two undulating, reflective waves that are bordered with low planting. The reflective nature of the borders help define the path and offer a sense of movement as well as a safety addition to the design to add reflective surfaces for pedestrians.



04

Technical

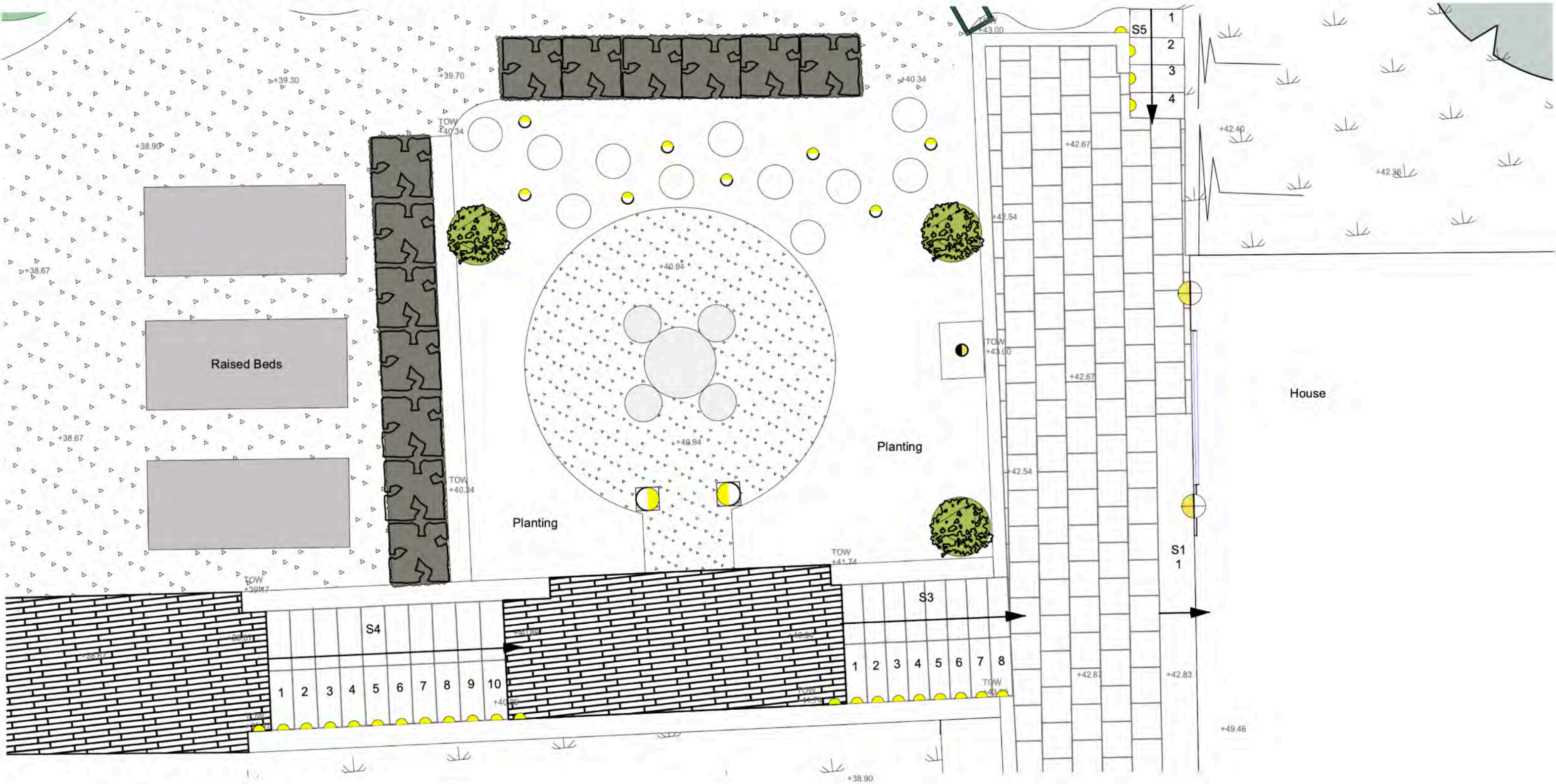
Supporting specification plans & drawings:

Construction Drawings

Lighting Intention Plan

General Arrangement and Setting Out Plan

FOR INFORMATION - NOT FOR CONSTRUCTION



Notes:

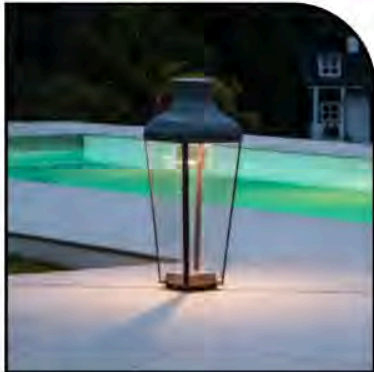
All fittings to be a warm white, spectrum tbc 2400-2700K

All fittings to be IP67 or IP68 for any water use

House



Dining



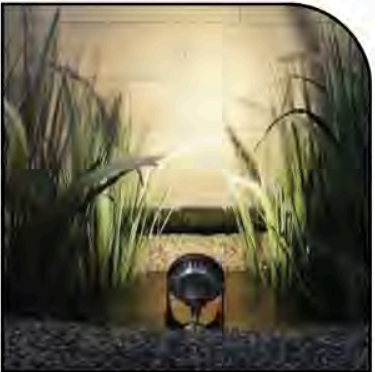
Stairs



Planting



Water



1 [Lighting Plan]
Scale: 1:100



Wall Mounted Box Light -
Location: Fixed onto main house entrance/exits
Product: MONTROSE CITY SMALL
Supplier: Tekna
Finish: Dark Bronze
Size: 216mm x 405mm x 165mm.

no. 2



Floor Lamp -
Location: Moveable, but set out to threshold of gravel patio
Product: MONTROSE FLOOR - 2700K
Supplier: Tekna
Finish: Dark Bronze, Clear Glass
Size: 322mm x 900mm x 322mm.

no. 2



Eyelid Step Lights -
Location: In wall, for each step - 1 side
Product: Hunza PURE LED Eyelid Step Lights (seamless)
Supplier: Landscape Plus
Finish: eco black
Size: 63.5mm x 68.5mm - bezel 88mm

no. 25



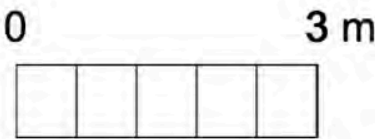
Submerged Water Light -
Location: In trough water feature
Product: The LunAqua 10
Supplier: Landscape Plus

no. 1

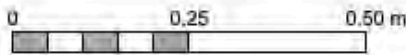
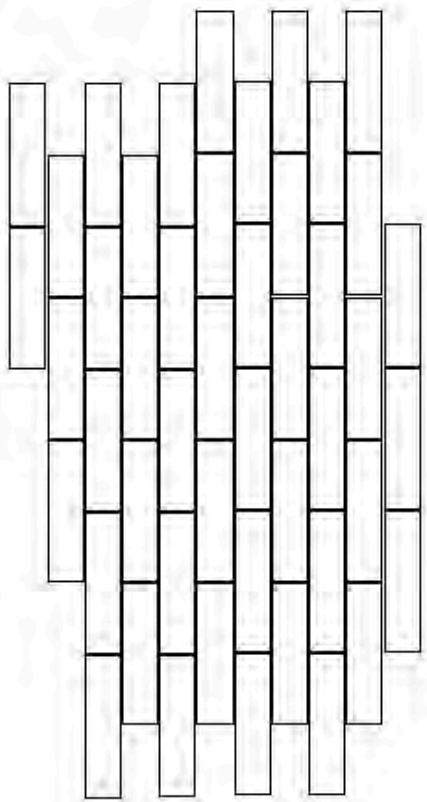


Spike Spotlight -
Location: In planting alongside stepping stones and in planters
Product: Hunza PURE LED Adjustable Spike Spots
Supplier: Landscape Plus
Finish: eco black
Size: 63.5mm x 75mm x 200mm spike

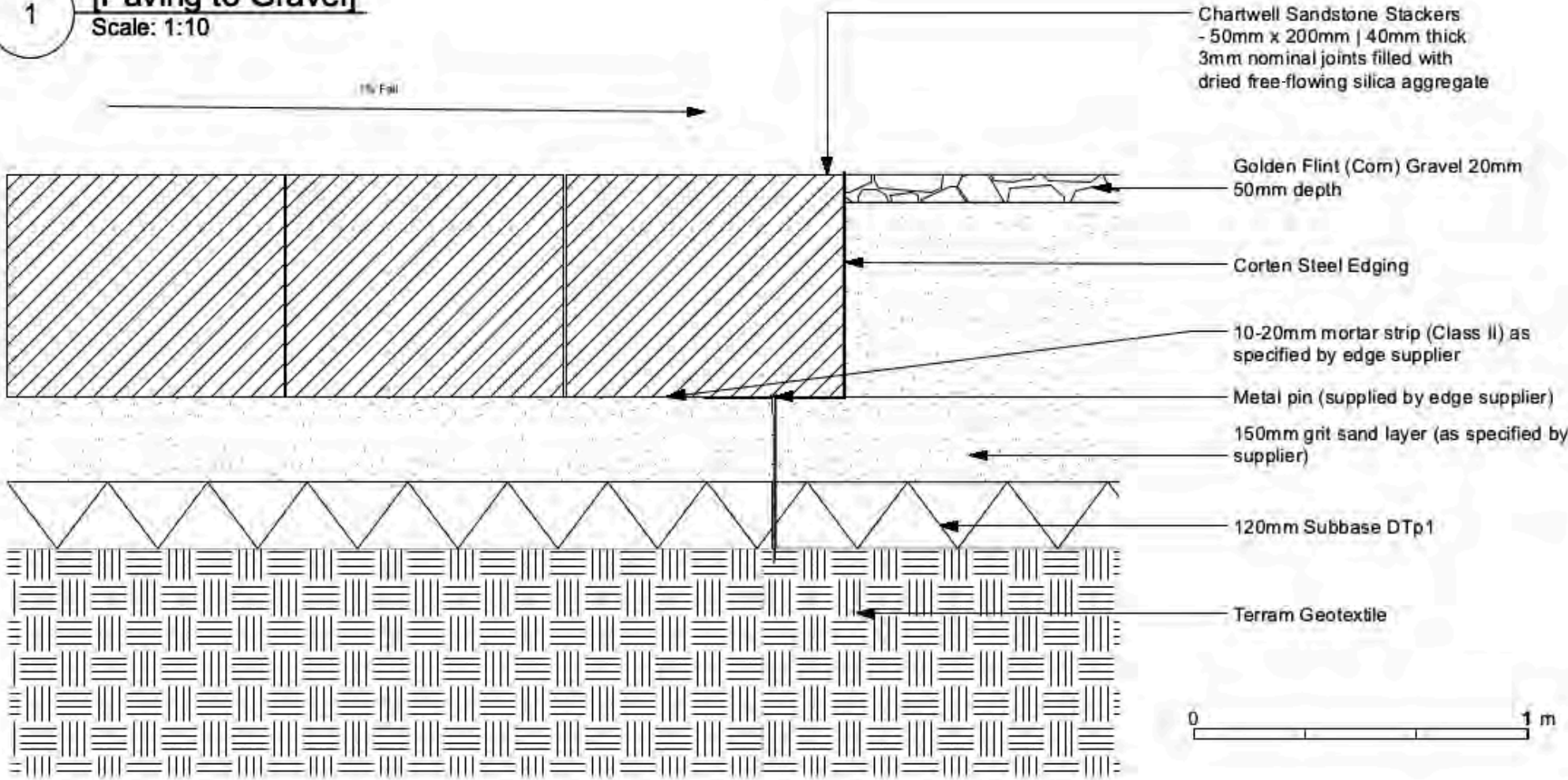
no. 8



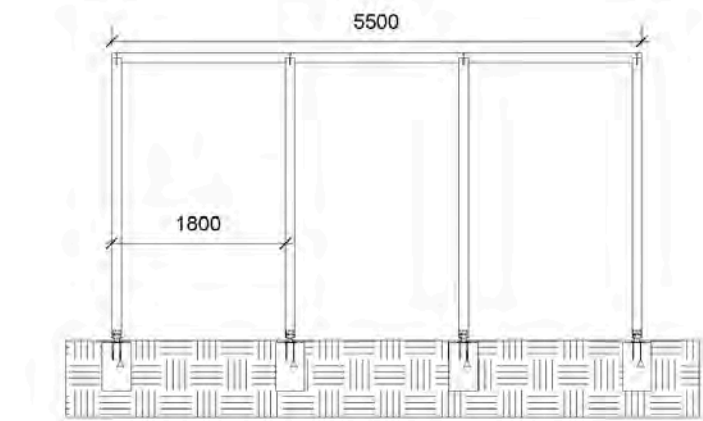
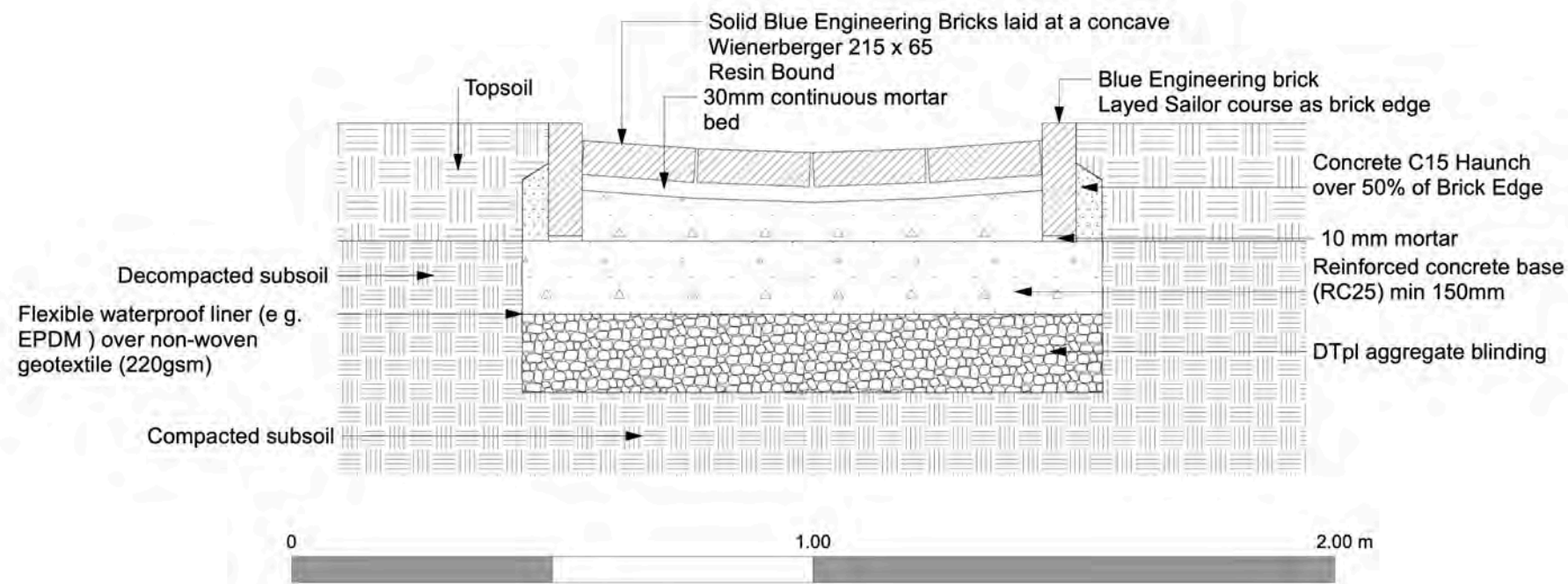
2 [Running Bond]
Scale: 1:10



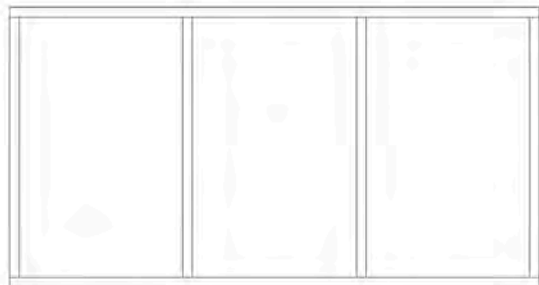
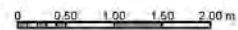
1 [Paving to Gravel]
Scale: 1:10



1 [Brick Rill]
Scale: 1:10

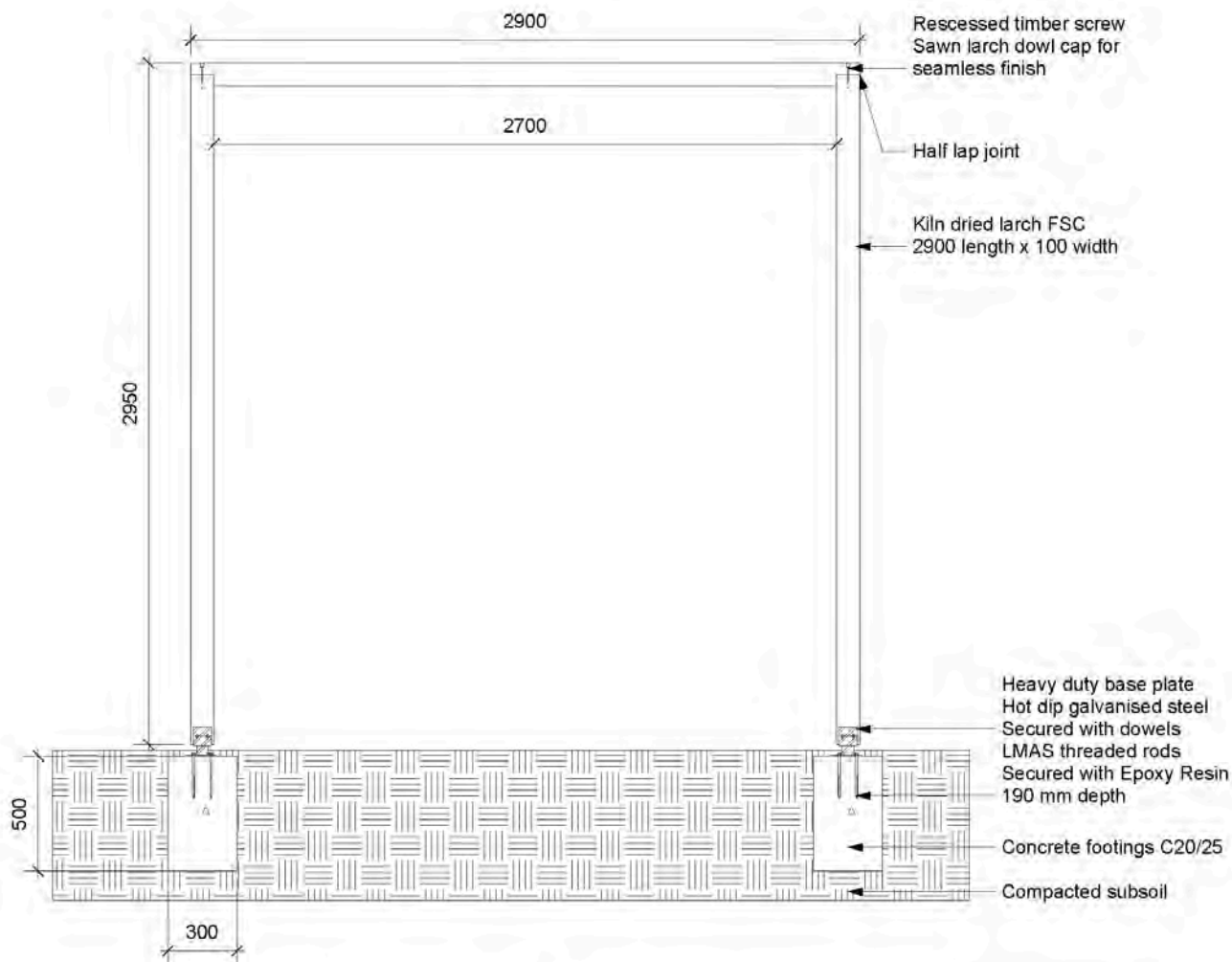


2 [Section B]
Scale: 1:50

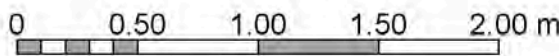


3 [Top View]
Scale: 1:50

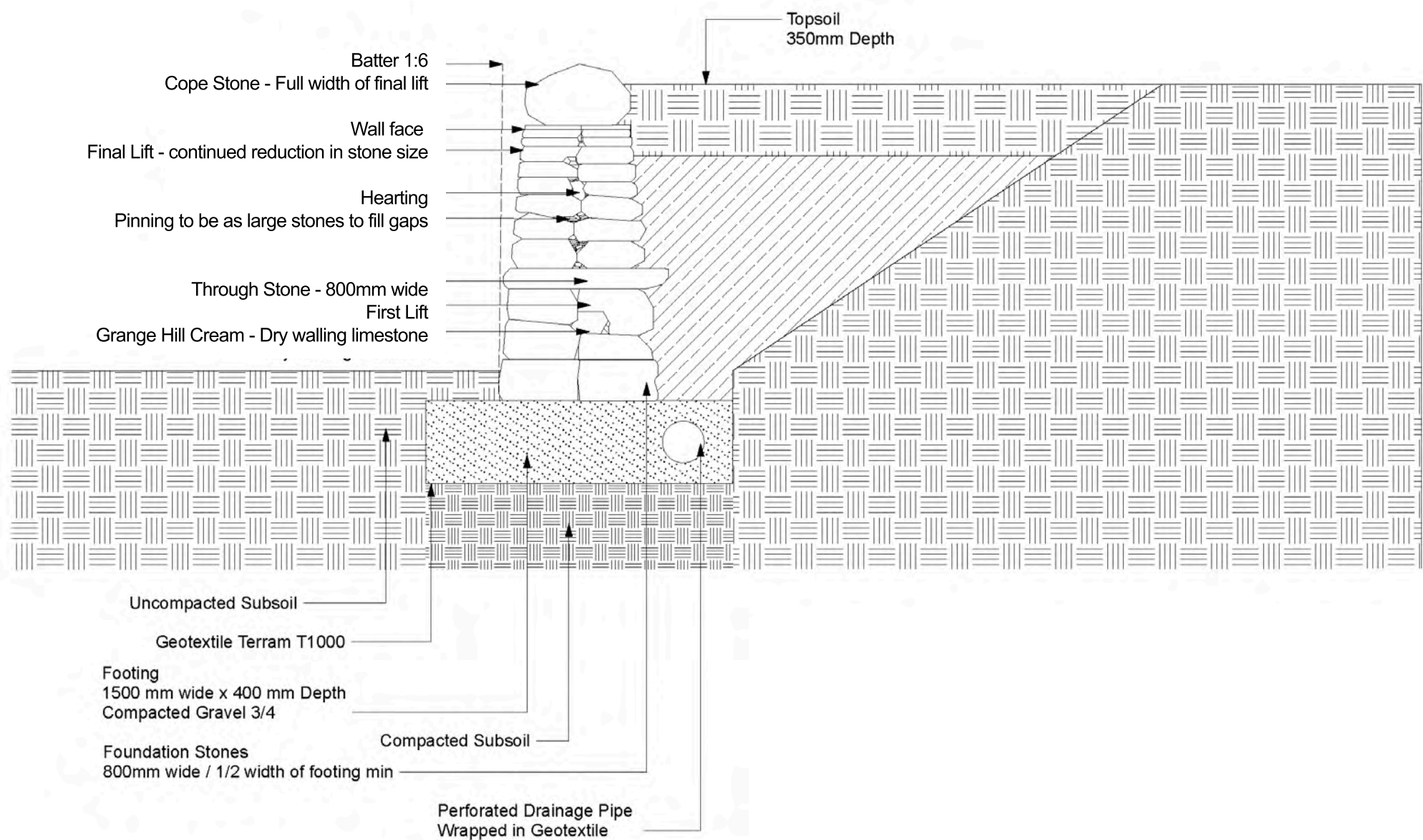
Do not scale from this drawing
All measurements are in millimeters
All measurements and levels to be checked on site



1 [Section A - A2]
Scale: 1:20



1 Dry Stone - Retaining Wall
Scale: 1:20



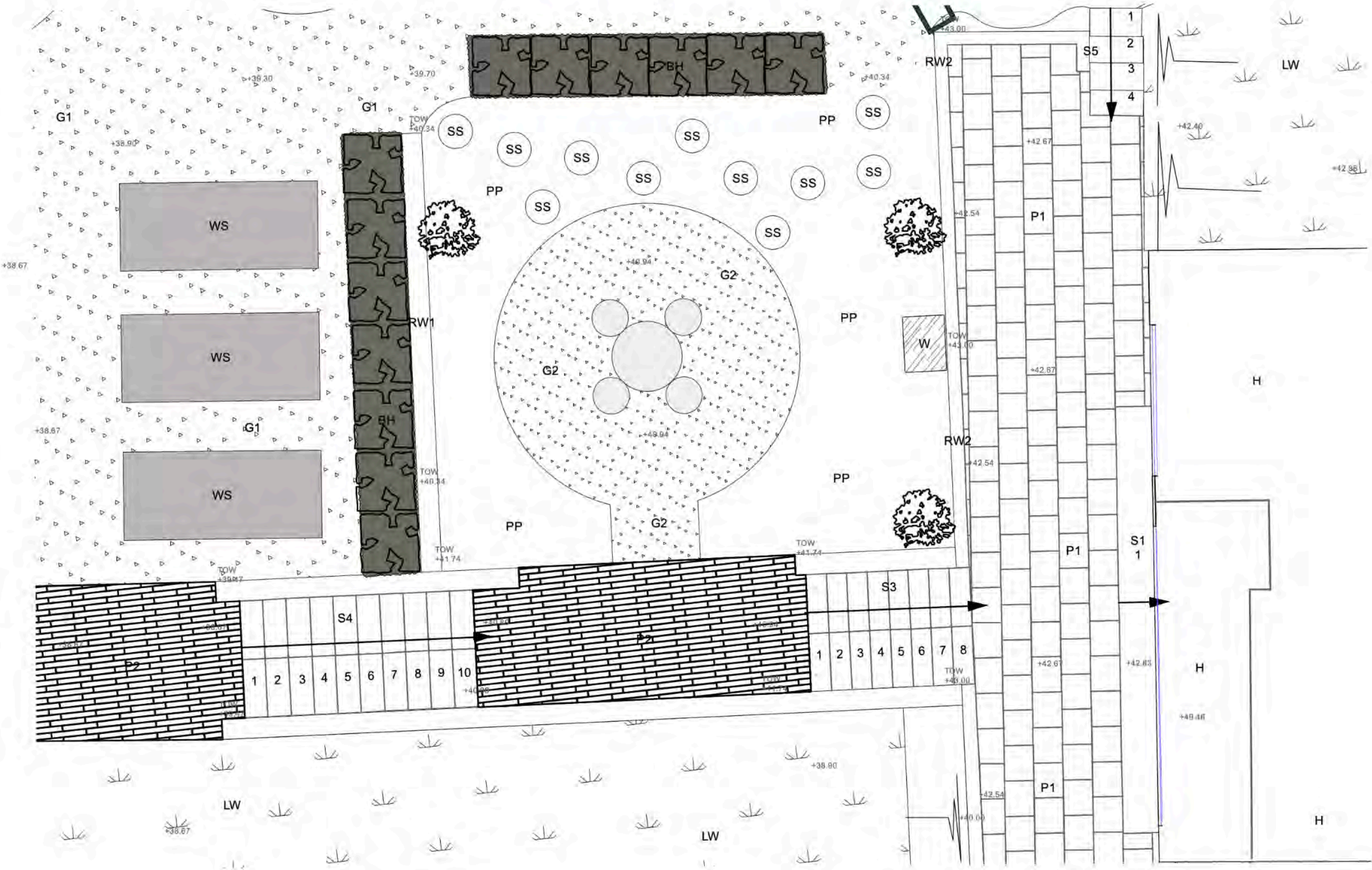
2

[General Arrangement]

Scale: 1:100



FOR INFORMATION - NOT FOR CONSTRUCTION

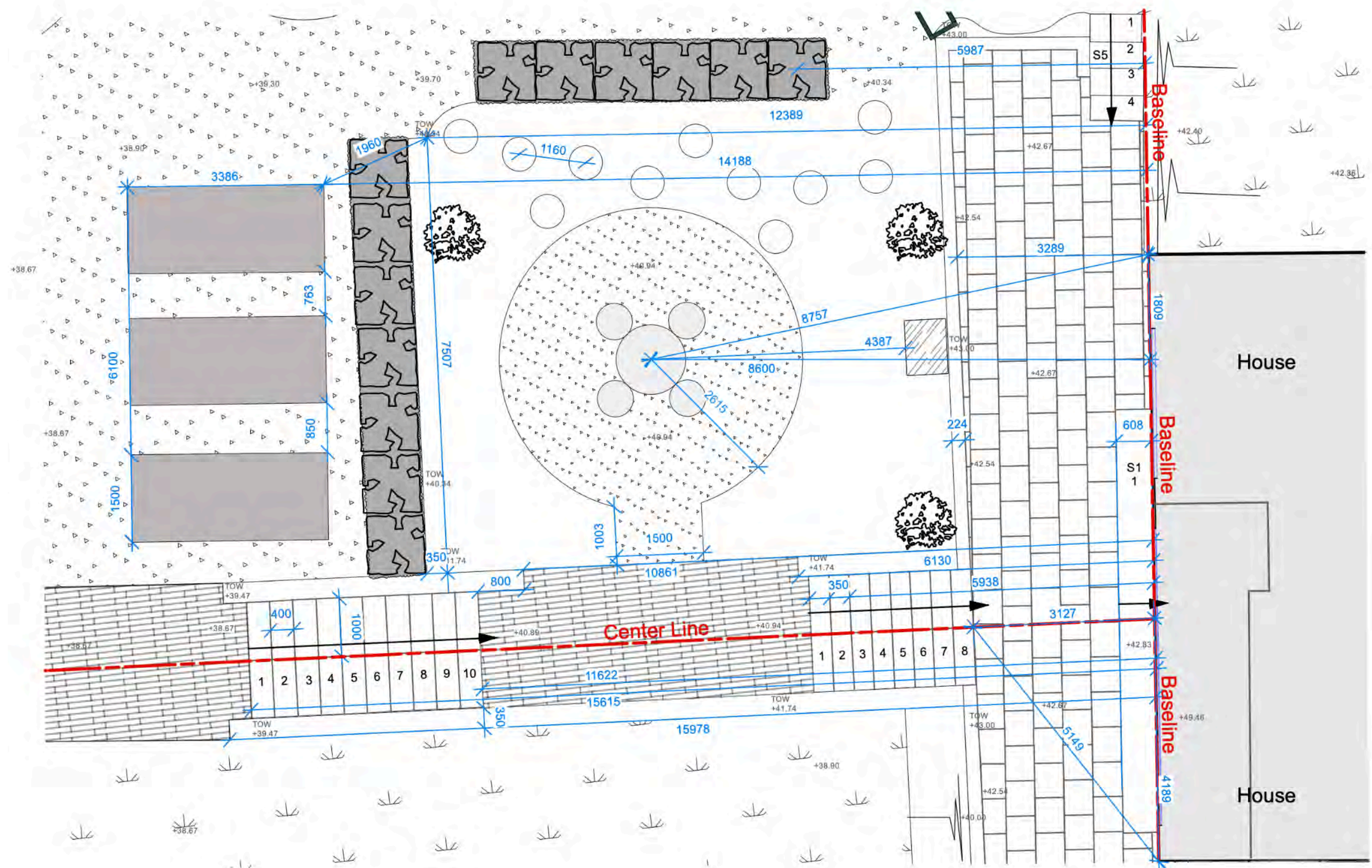


	Lawn Turf P. Ryegrass
	Perennial Planting TBC.
	Fagus sylvatica Hedge
	Gardenstone Japanese Stepping Stones 580 Diameter - To be laid roughly 500mm distance between each stone
	Stone Trough Water Feature - Self Contained 950 x 710 mm
	Main House - VLux Doors
	Wooden Sleeper Vegetable Beds 600mm H 1500 W x 3300 L
	Golden Flint (Corn) 10mm pathway
	Golden Flint (Corn) 20mm Corten Steel Edging 100mm
	Existing patio foundations to be kept Pavers relaid with AllGreen 'Durlston Honed' Pavers 500mm x Random Lengths (30mm Thick) Laid in broken bond with 6mm joints filled with resin mortar colour matched
	Chartwell sandstone stackers 50mm wide x 200mm wide x 40mm thick Stackers laid in stretcher bond with 2-3mm nominal joints filled with dried free flowing silica aggregate
	Existing step from kitchen extension
	Bespoke Honed Durlston Paved Steps Single step tread units 350mm wide x 2x(1000mm long x 50mm thick) with a pencil edge and dripline beneath 25mm overhang.
	Bespoke Honed Durlston Paved Steps Single step tread units 400mm wide x 2x (1000mm long x 50mm thick) with a pencil edge and dripline beneath 25mm overhang.
	Existing Patio Steps, kept.
	Retaining wall - Flint Brick cladding 1600 H, Constructed to structural engineers specification.
	Retaining wall - Flint Brick cladding. Existing foundations TBC. 2500 H Patio, Constructed to structural engineers specification.

Gravel patio - General Arrangement for Hurstpierpoint residential

A horizontal number line starting at 0 on the left and ending at 5 m on the right. The line is divided into 5 equal segments by 4 vertical tick marks. The segments are shaded light blue.

FOR INFORMATION - NOT FOR CONSTRUCTION



Gravel patio - Setting Out for Hurstpierpoint residential
All measurements in mm

05

Darcy



“I’m a garden designer with a fine-art background, so I approach landscapes the way I once approached a canvas —through colour, texture, and the rhythm of forms.”

Darcy Chapple

Industry Experience:

- Hampton Court Flower Show: Install for Verity Smith 2025
- Royal Windsor Flower Show: Garden Makers 2025
- Chelsea Flower Show: Volunteer with Studio Ikram for The Pathway Garden – Robert Beaudin and Allon Hoskin 2025

Relevant Education

2025: KLC Garden Design Diploma
2018–2022: BA Fine Arts 2:1

Awards and Exhibitions

Royal Windsor Flower Show: Garden Makers 2025, Bronze
Residency at Porthmeor Studios St Ives
Exhibited at Sailors Jail Gallery Falmouth
Exhibited at No42 – London

Additional Work Prior

2022–2024: Self employed oil painter
2023: Studio coordinator Petalon Flowers
2022: Intern for Gustav Metzger Exhibition

Skills:

- Hand Drawing/ Visuals
- Vectorworks
- Sketch Up
- InDesign and Canva
- Photoshop
- Microsoft Office

LOOKING FORWARD
TO CONTINUING THE
CONVERSATION.



CONTACT ME
darcy.chapple@me.com