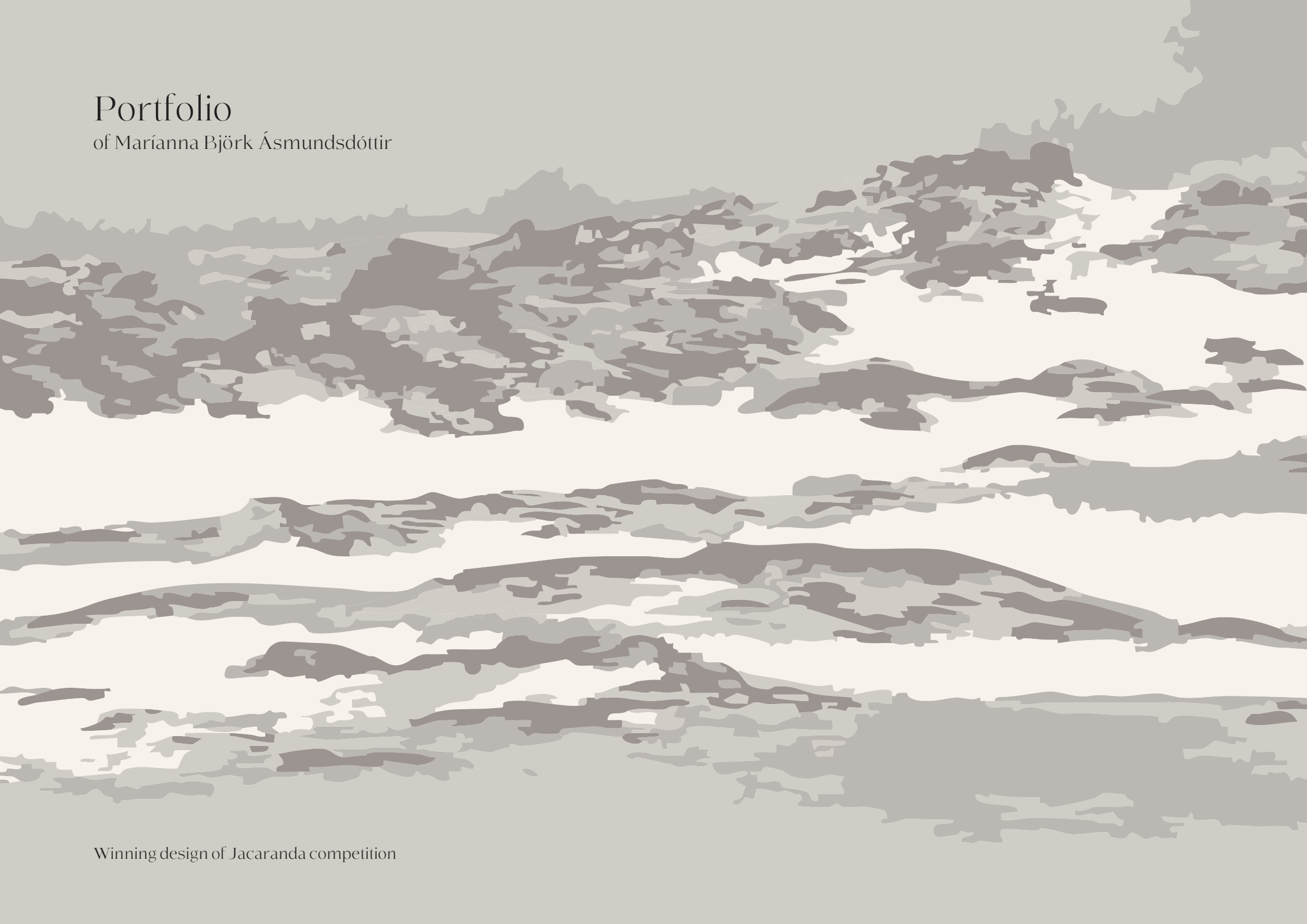


# Portfolio

of Marianna Björk Ásmundsdóttir



Winning design of Jacaranda competition

# Boutique hotel

53-54 Binderton, Sussex

Client: West Dean

Size: 280 m<sup>2</sup>



# Hospitality

Three story Grade II listed Georgian house redesigned into a short term rental. With an added extension and sunroom, mixing modern and traditional.

Five bedrooms and five bathrooms were designed to give guests a luxury hospitality experience.

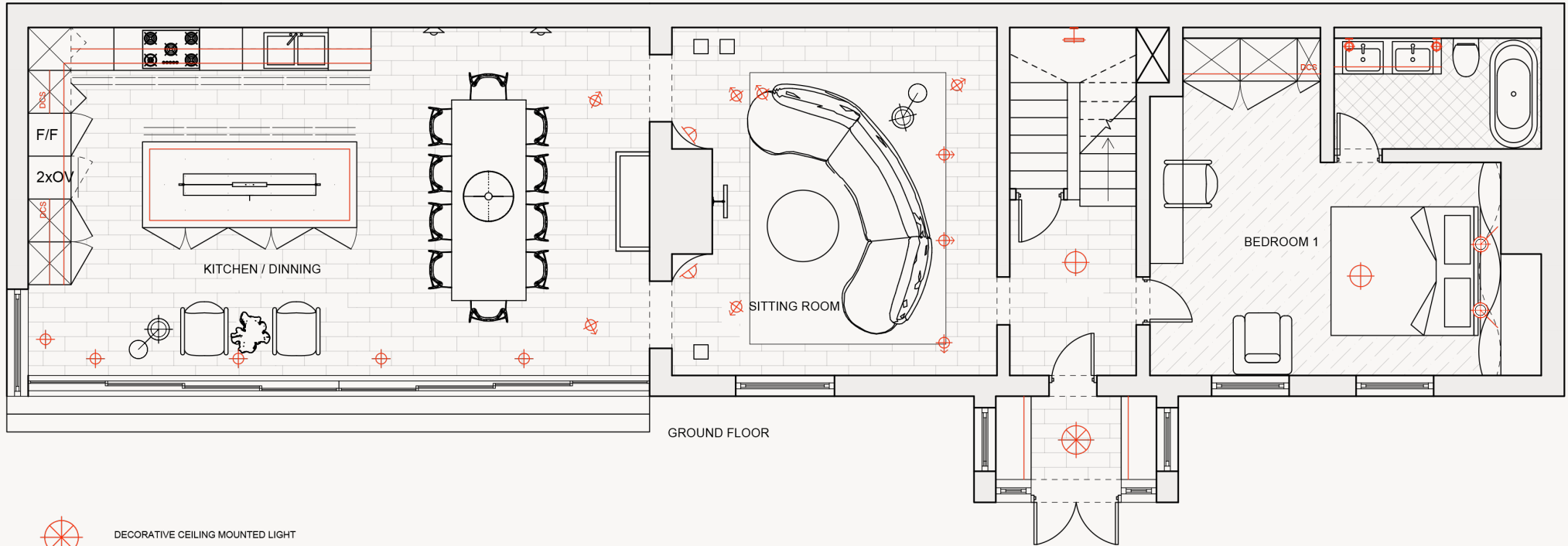
Inspired by the poetic beauty of the English countryside, the surrealist vision of Edward James, and West Dean's mission to connect art, nature, and people.

The house becomes a place where art and life converge, a surreal yet grounded retreat that invites guests to dream, reflect, and reconnect with nature and the poetic rhythm of time.















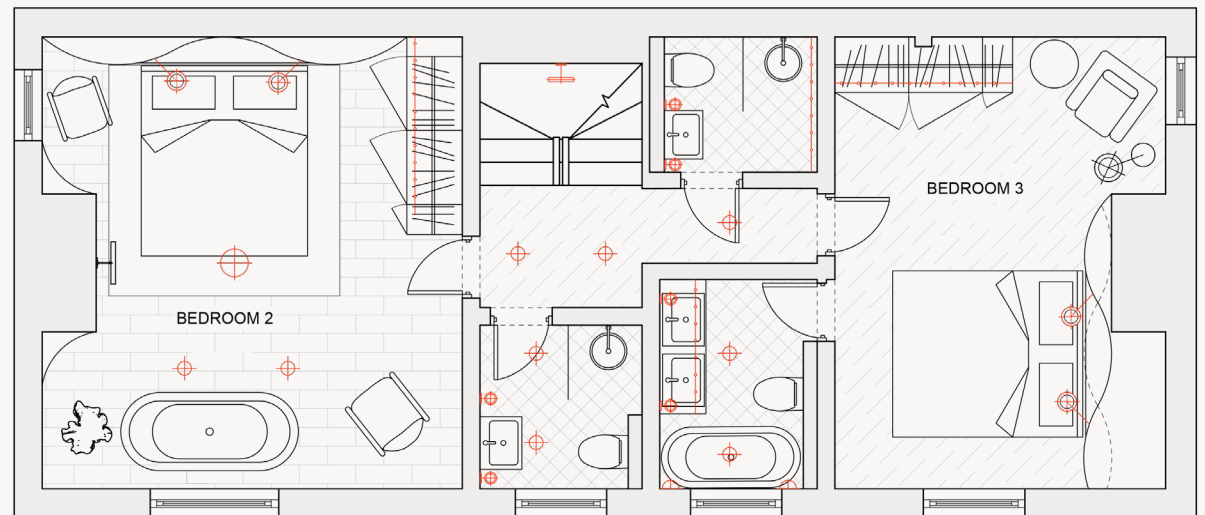
The concept of a sunset was integrated through the house from light to dark.





GROUND FLOOR

-  DECORATIVE CEILING MOUNTED LIGHT
-  FIXED RECESSED DOWNLIGHT
-  ADJUSTABLE RECESSED DOWNLIGHT
-  PENDANT LIGHT
-  READING LIGHT
-  DECORATIVE WALL LIGHTS
-  PICTURE LIGHT
-  Wall Uplighter
-  DCS LIGHT - TURNS ON AND OFF WHEN WARDROBES ARE OPEN
-  INTEGRATED LED LIGHTS
-  DECORATIVE FLOOR LIGHT
-  DECORATIVE TABLE/DESK LIGHT



FIRST FLOOR





# FFE - Living and dining

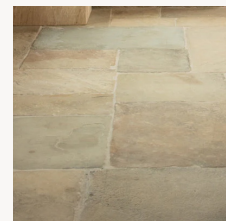
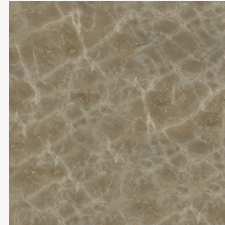
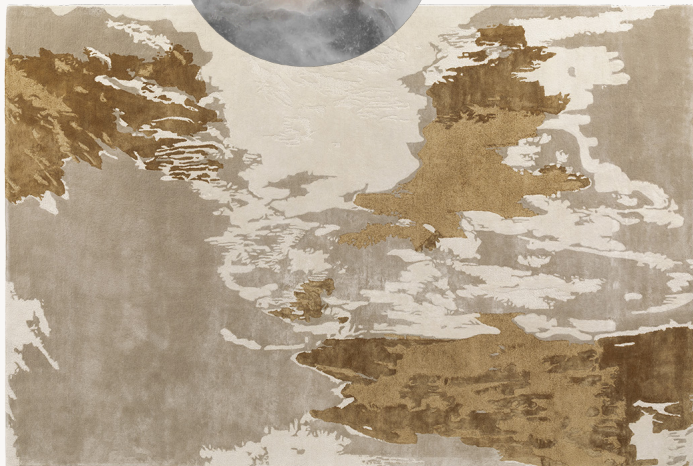


Lámina light  
Pinch dining  
table and chairs  
Vintage Monk  
Lounge chair



Vista wallpaper  
Serpentine sofa  
Apparatus wall light  
Jan Erika rug  
Vintage ceramics

Vintage glass cabinet  
Marbel countertop  
Velvet material for sofa  
Reclaimed limestone tiles  
Linen curtains











# Residential

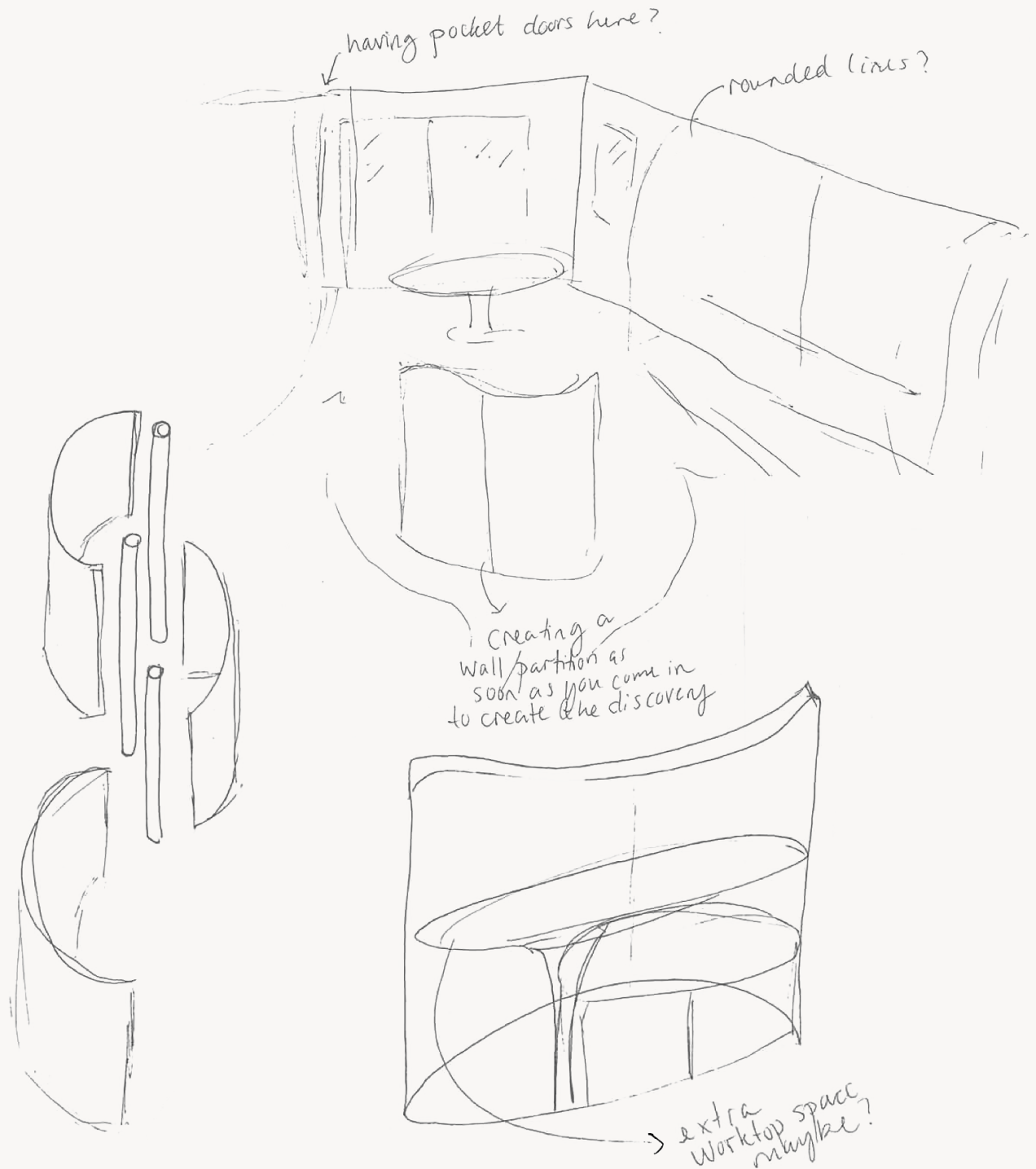
Clients: George and Will  
Location: Camden Goods Yard  
Size: 80 m<sup>2</sup>



# Residential

This project involved a complete design process. Their requirements included two bedrooms, a bathroom, a utility room, a fully equipped kitchen, a relaxed living area, and a spacious dining area for entertaining.

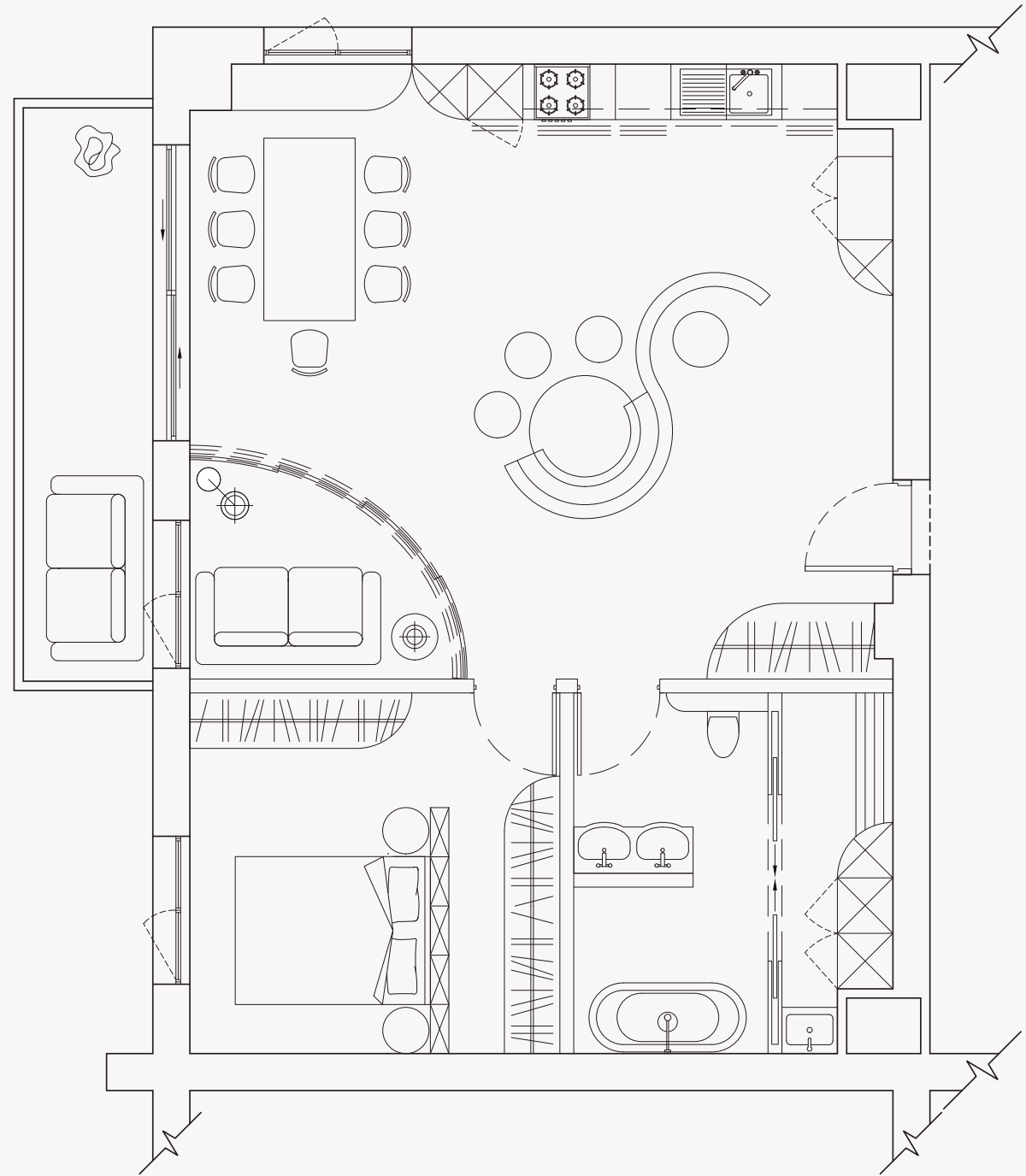
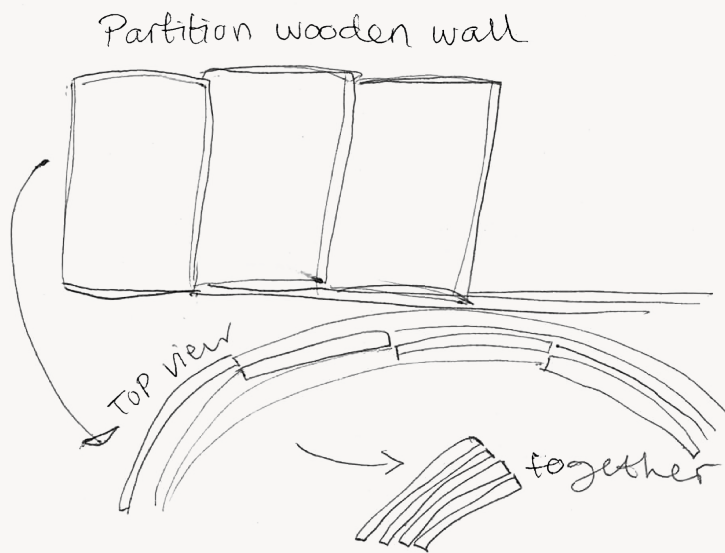
Will needed a dedicated space to work from home and exercise and George required room for his extensive collection of books. George and Will enjoy dancing, travelling and hosting dinner parties all of which are integral to the design. They envisioned a cozy yet colourful space that reflects their vibrant lifestyle.



# Technical drawing

The chosen layout focuses on the concept of discovery, being able to choose more than one way around the apartment and always having something intriguing around the corner.

Building upon that a lot of functional elements are hidden within the built-in providing ample hidden storage and serenity.





8



## FFE & Materials

1



2



3



4



7



6



11



10



9



12



13



15



14



1 Dark stained oak

2 Microcement flooring

3 Breccia Sicilia marble

4 Benjamin Moore -  
Pale Oak OC-20

5 Brass handles

6 Mahogany Y-chair

7 Agneta linen curtains

8 Vitra Akari 26A lamp

9 Drop chandelier

10 Sleeper sofa

11 Cassina 780 tables

12 Ariette Flos light

13 Samurai lounge chair

14 Flawas dining table

15 One floor lamp



# Retail

Client: Eco

Location: Westfields White City

Size: Pop-up, 24 m<sup>2</sup>

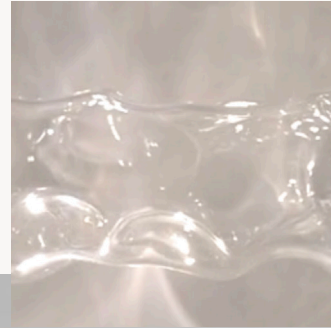
# Retail

The pop-up is a part of Eco's brand activation strategy to create meaningful, engaging experiences that bring the brand to life and leaves a lasting impression on its target audience.

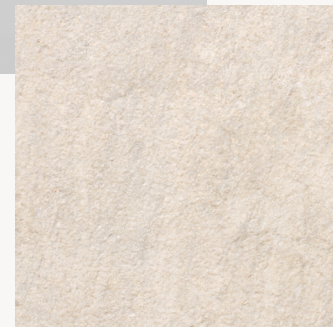
The goal is to foster emotional connections, enhance brand awareness and ultimately drive customer action.

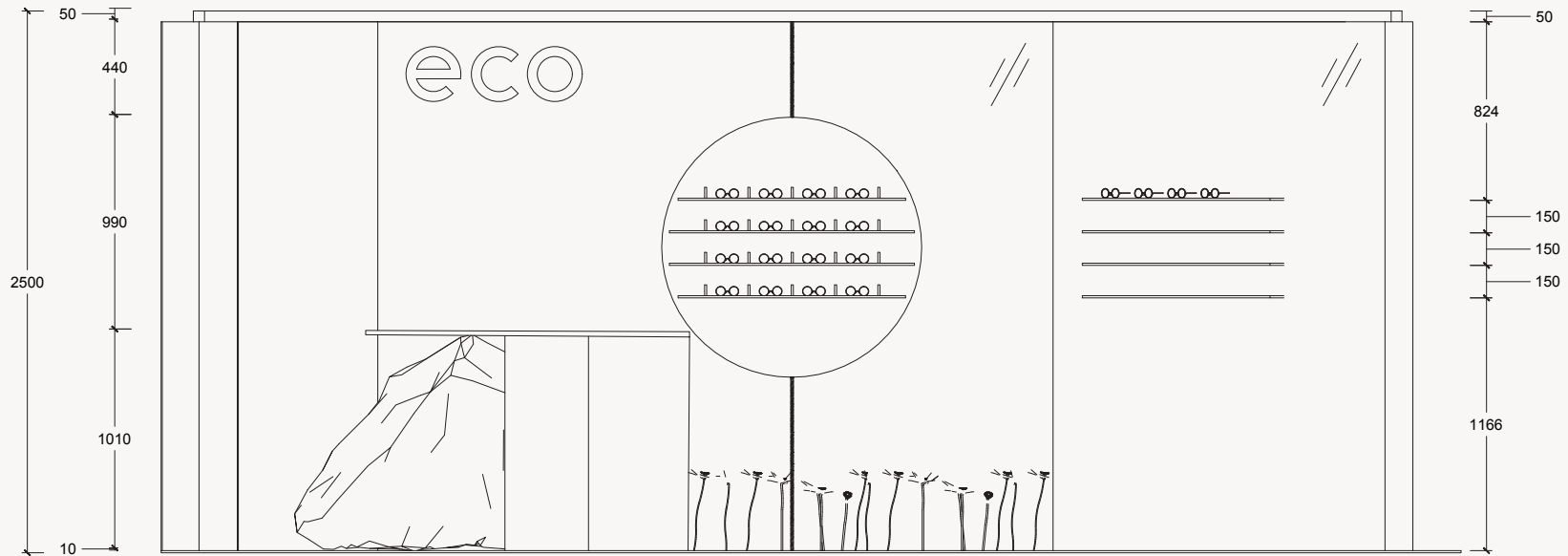
Sustainability with a purpose is at the core of Eco's ethos and values and has to be highlighted.

Establishing a connection with the environment to promote awareness and create eco-conscious consumers.

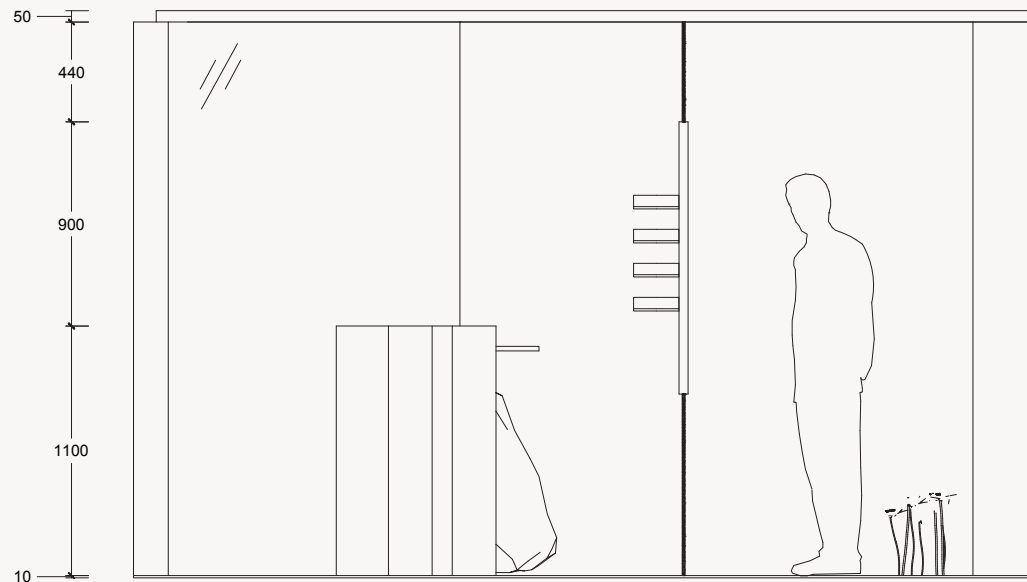


Bewater lamp  
Barrisol, translucent  
stretch sheet with water  
texture  
Recycled aluminium  
Reclaimed limestone  
Like Mirror, stretched  
mirror fabric





01 ELEVATION 1:25@A3  
ECO POP-UP

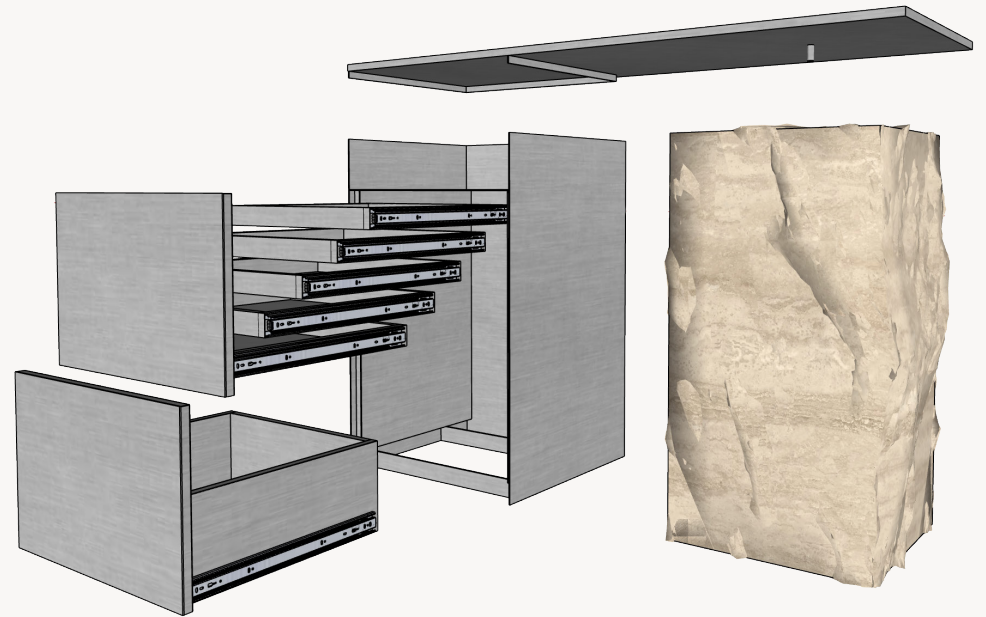
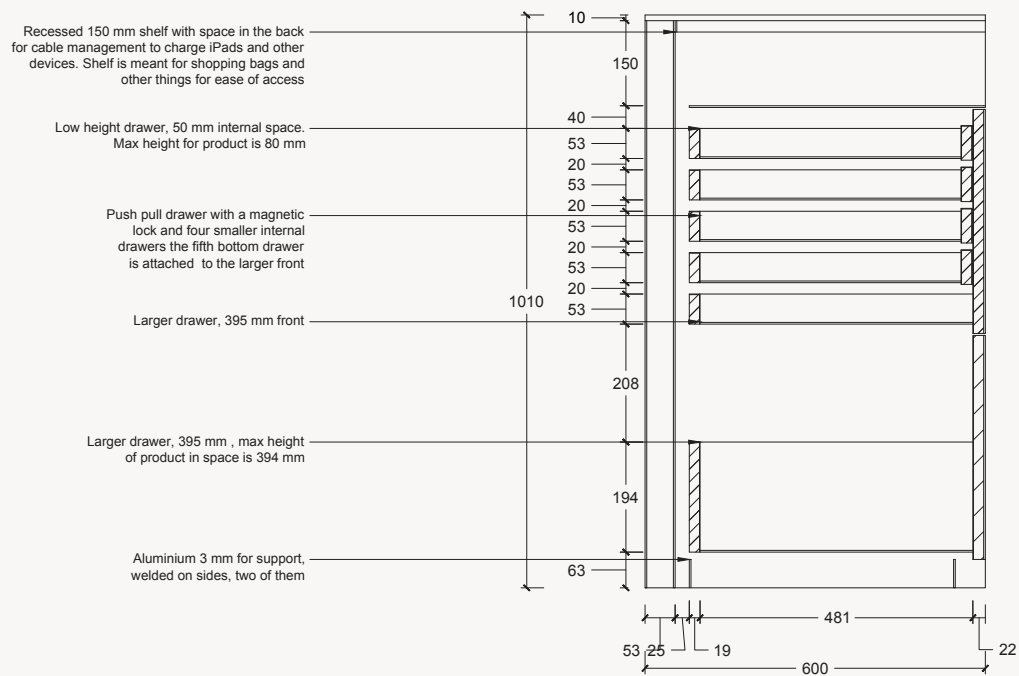


02 ELEVATION 1:25@A3  
ECO POP-UP

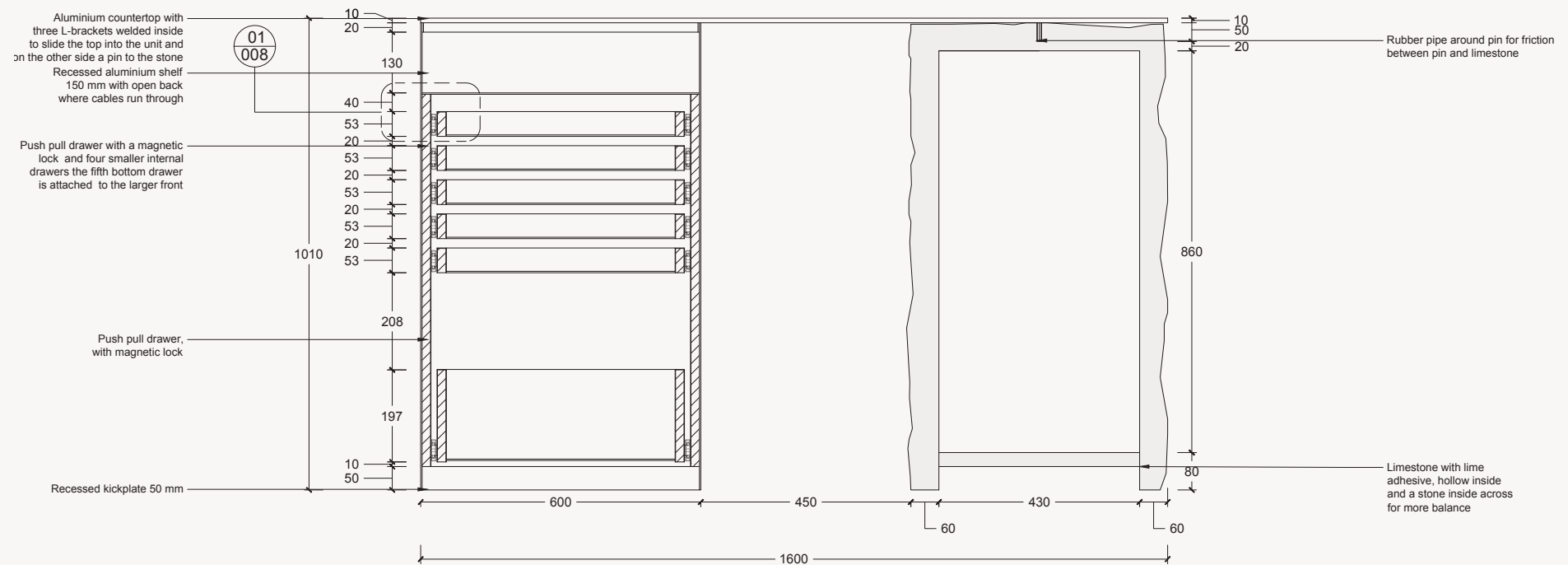
The concept is elemental, describing something in its most pure, unrefined, or natural form. Inviting customers into a world where sustainability and optics merge.

Drawing inspiration from a prism. This dynamic interplay of light and shadow, reflection and refraction. More than just illumination, it serves as a beacon of hope—symbolizing the pursuit of a greener, more sustainable future.

# Two & Three dimensions



# Technical drawings





# Rug design

Client: Jacaranda

Location: Battersea, living room

# Jacaranda competition



Photographs  
taken in Iceland by  
designer last winter.

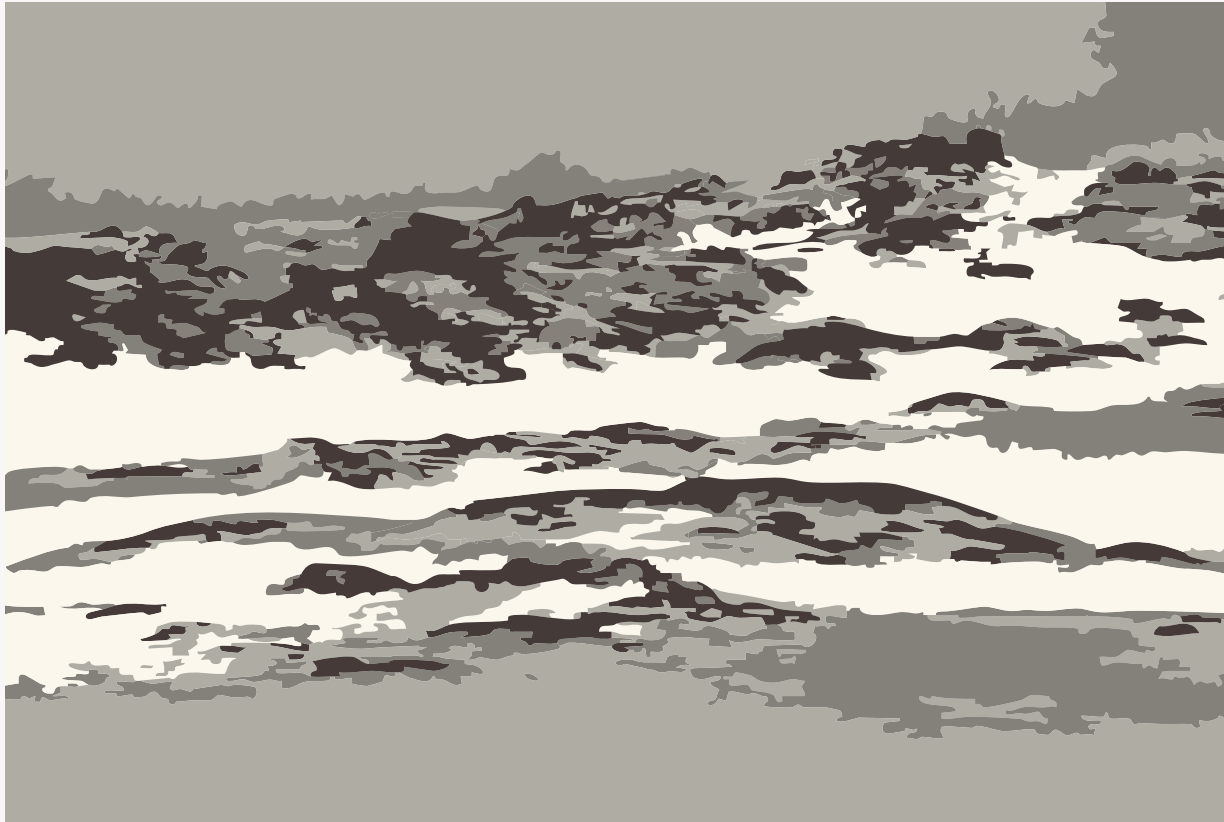


Client: Jacaranda  
Location: Battersea, living room  
Design Concept: Regeneration

This hand-tufted rug draws inspiration from the Icelandic landscapes where I grew up. The organic patterns create a visual narrative of nature's ability to reclaim and rejuvenate even the most unforgiving terrains. A carefully curated color palette of cool whites, charcoal grays, and soft greys reflects the Icelandic environment's tones, with each color playing a role in the story of renewal.

Currently in production. Sample above.

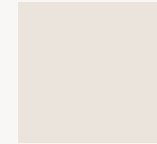
# Vetur



Rug size: 200x300 cm  
Composition: New Zealand wool & TENCEL  
Carving: No carving  
High & low: same pile height,  
cut and tip-sheared  
Edge of rug: hand-sewn edge



New Zealand  
wool



New Zealand  
wool



TENCEL  
Cut pile



TENCEL  
Tip sheared



New Zealand  
wool



# Mosi



Photographs  
taken by designer  
in Iceland, 2017.

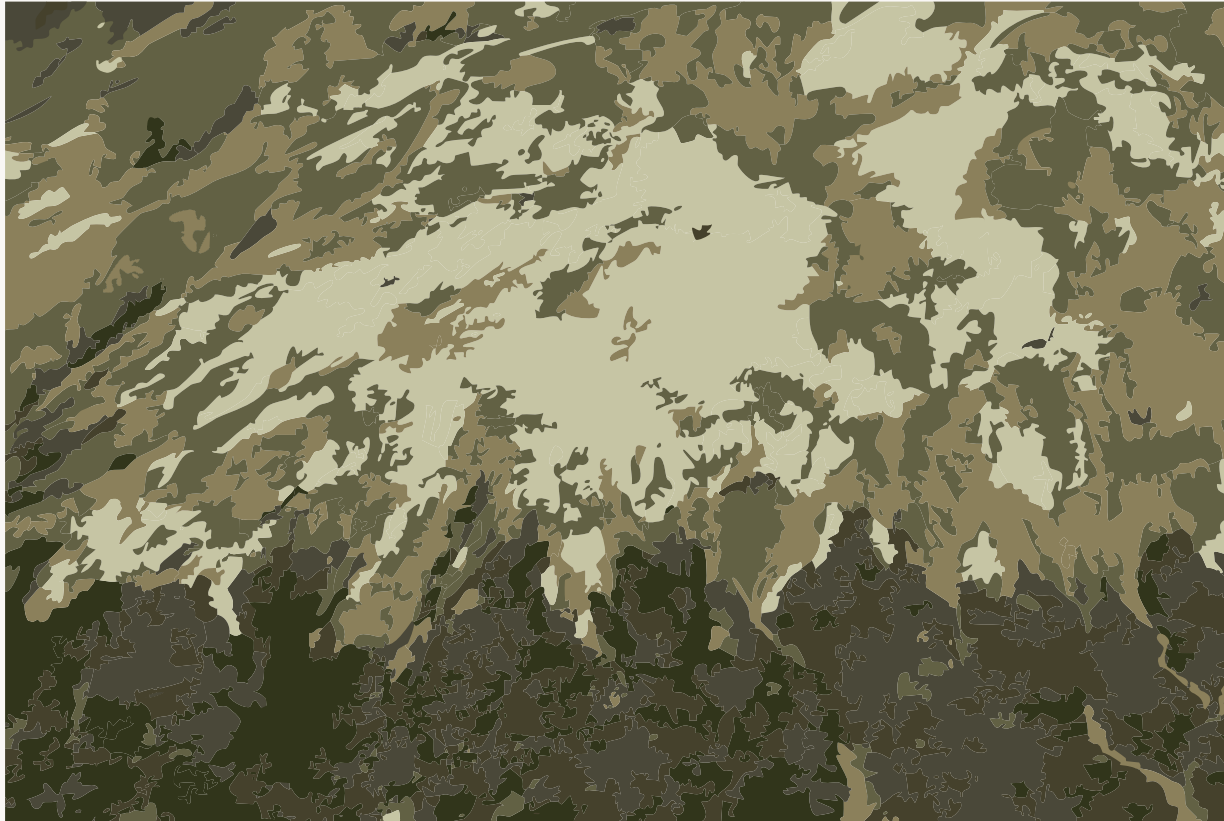


Client: Jacaranda  
Location: Battersea, living room  
Design Concept: Resilience

Drawing inspiration from the resilient mosses of Iceland. Moss thrives in harsh environments, transforming barren landscapes into vibrant ecosystems. The design captures the organic textures and tonal gradients of moss-covered terrains. The palette transitions from deep, earthy greens to lighter tones.

Currently in production. Sample above.

# Mosi



Rug size: 200x300 cm  
Composition: New Zealand wool & TENCEL  
Carving: No carving  
High & low: both, cut and tip-sheared  
Edge of rug: hand-sewn edge



New Zealand Wool  
tip-sheared



TENCEL  
low cut pile



New Zealand Wool  
low cut pile



New Zealand Wool  
high cut pile



TENCEL  
high cut pile



TENCEL  
high cut pile



Takk fyrir

Marianna Björk Ásmundsdóttir  
Font: Modiste by Marianna  
+354 8684242