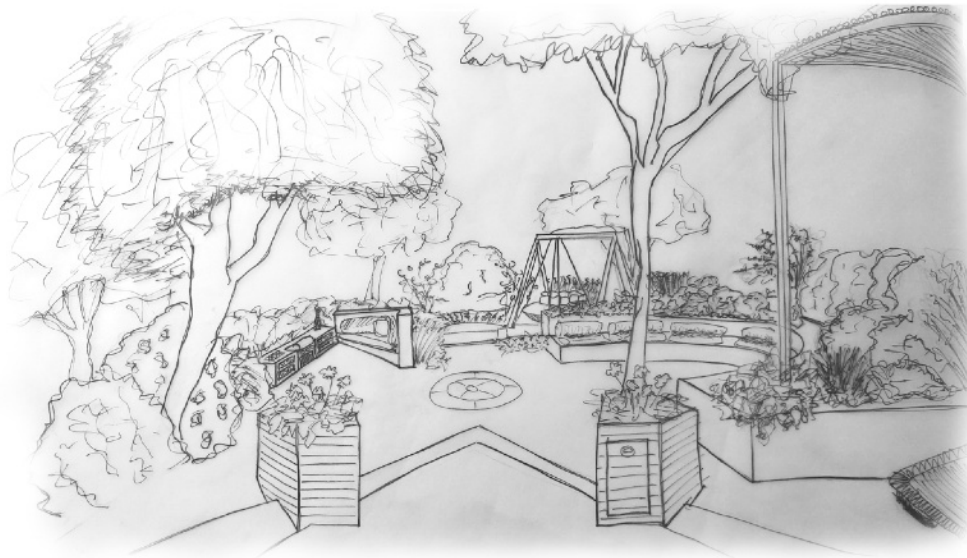
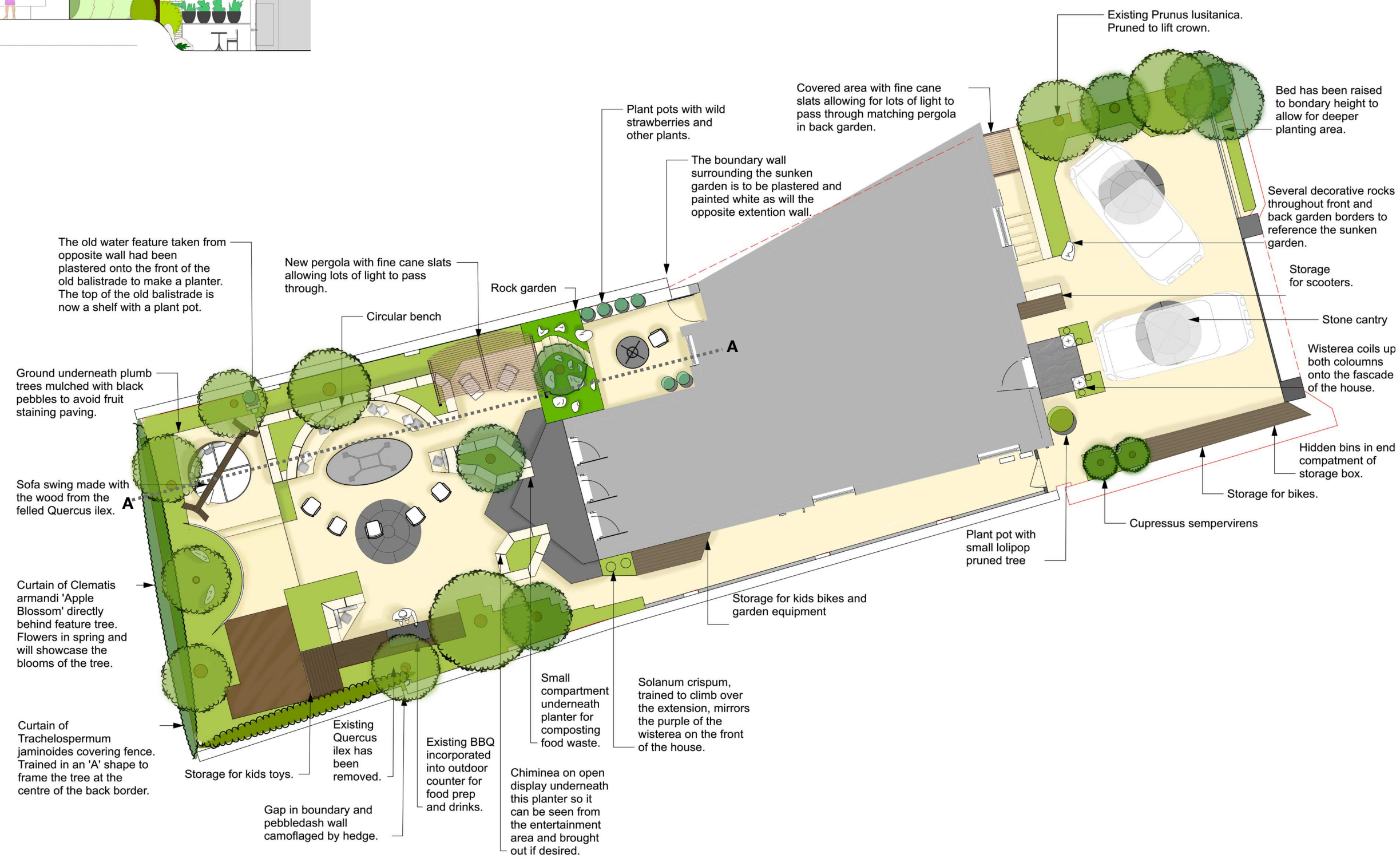
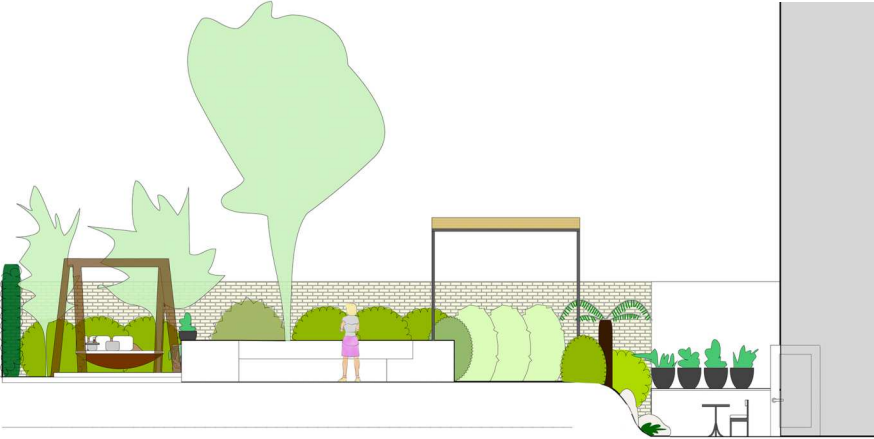
	<p>ROBERT KESHAM AIDATSARRAN PORTFOLIO</p>
--	--





- 3 RESIDENTIAL**
  - 3 MASTERPLAN & ELEVATION
  - 4 VISUALS
- 6 ROOF TERRACE**
  - 6 MASTERPLAN & VISUALS
- 7 HISTORICAL**
  - 7 MASTERPLAN
  - 8 PLANTING PLAN & SCHEDULE
  - 9 VISUALS
- 10 SCHOOL GARDENS**
  - 10 VISUALS
- 11 TECHNICAL DRAWINGS**
  - 11 GENERAL ARRANGEMENT
  - 12 SETTING OUT
  - 13 LIGHTING
  - 14 CONSTRUCTION DETAIL: RETAINING WALL
- 15 CV & SKILLS**
- 16 APPENDIX**
  - 16 ENVIRONMENTAL CONSIDERATION DOCUMENT (SCHOOL GARDEN)
  - 17 CONSTRUCTION DETAIL: WATER FEATURE
  - 18 SITE ANALYSIS (RESIDENTIAL)
  - 19 CONCEPT DEVELOPMENT (ROOF TERRACE)
  - 20 SHOW GARDEN CONCEPT DEVELOPMENT
  - 21 SHOW GARDEN MASTERPLAN & VISUALS

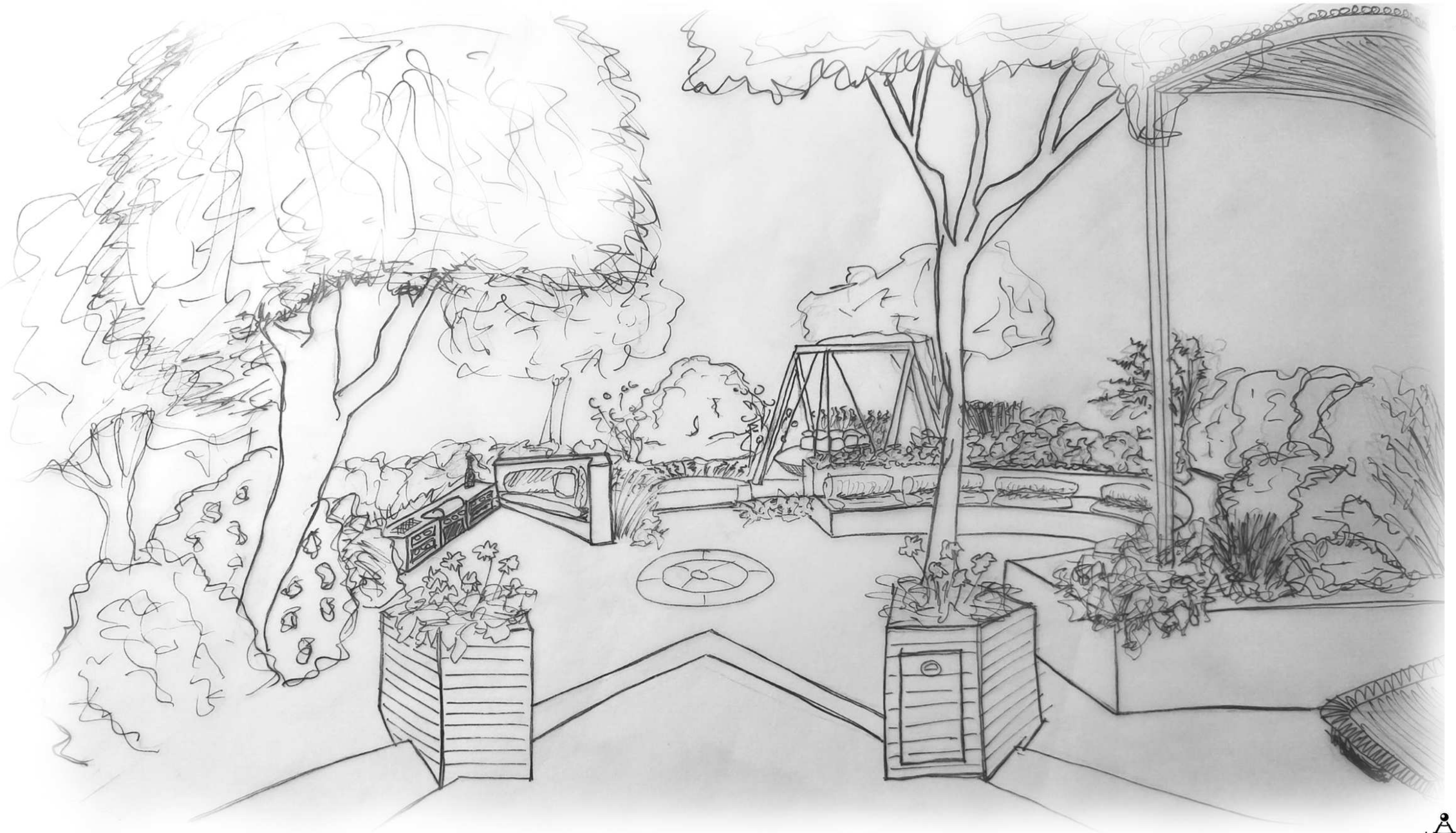




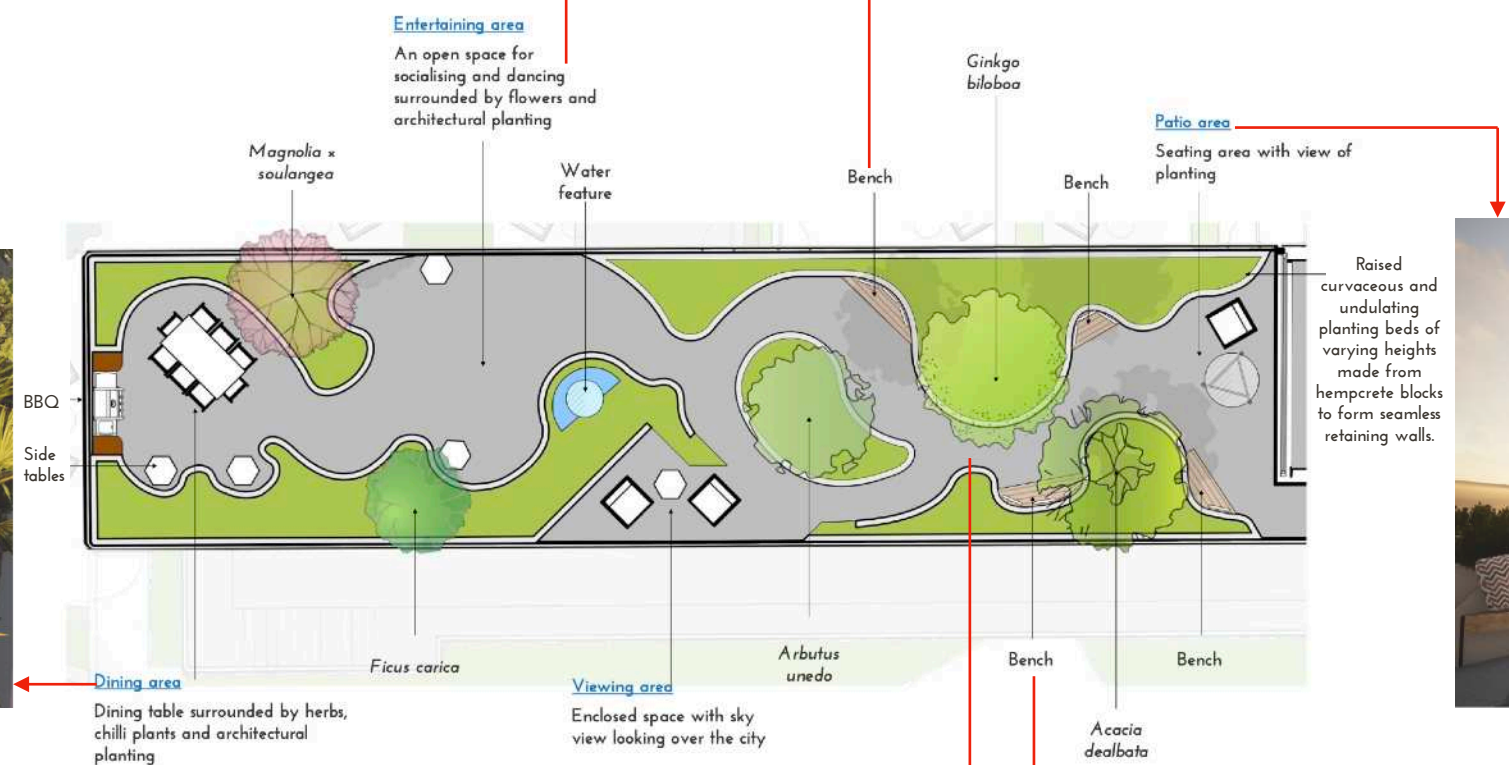
VISUAL OF THE SUNKEN COURTYARD.

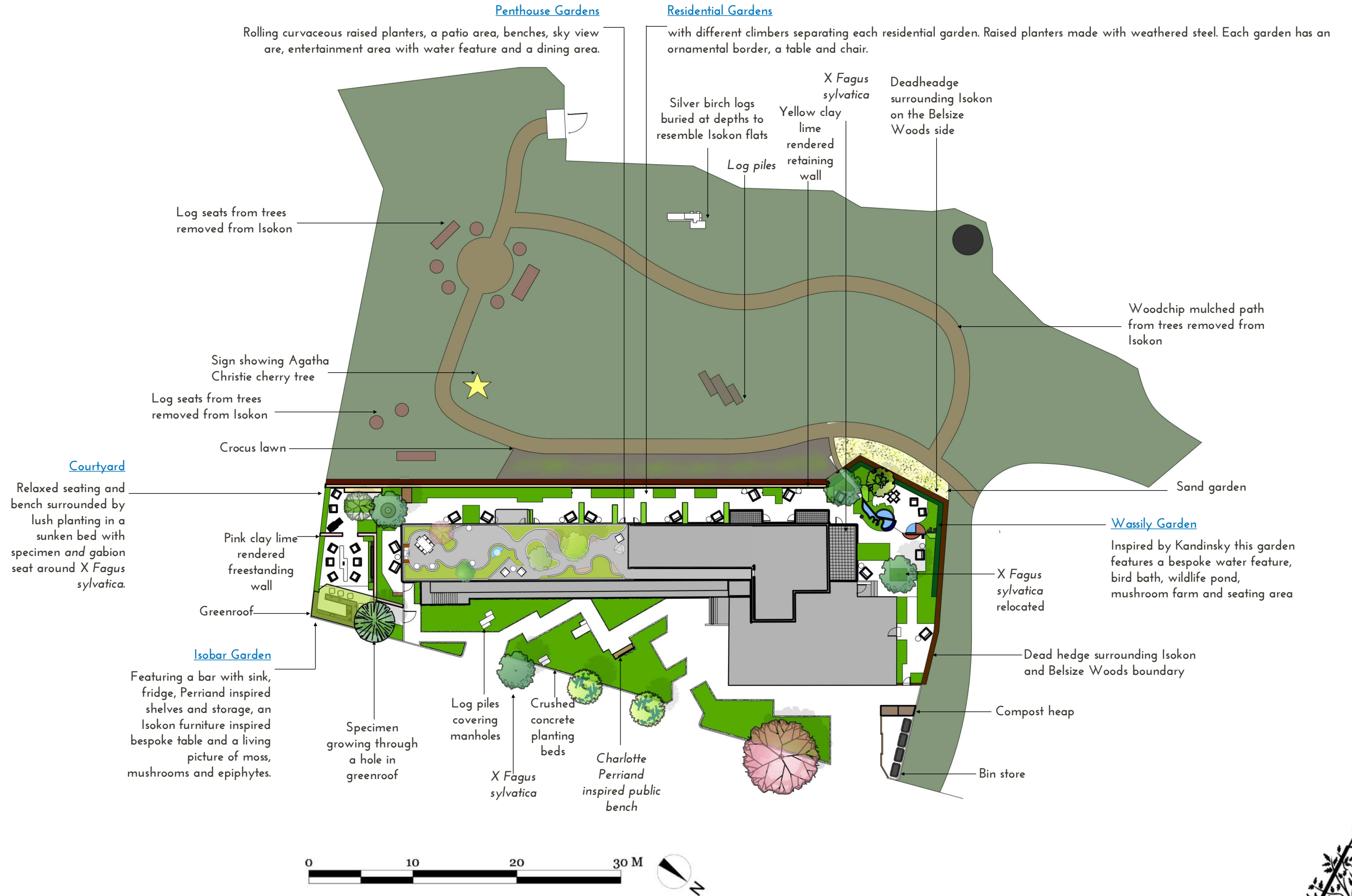


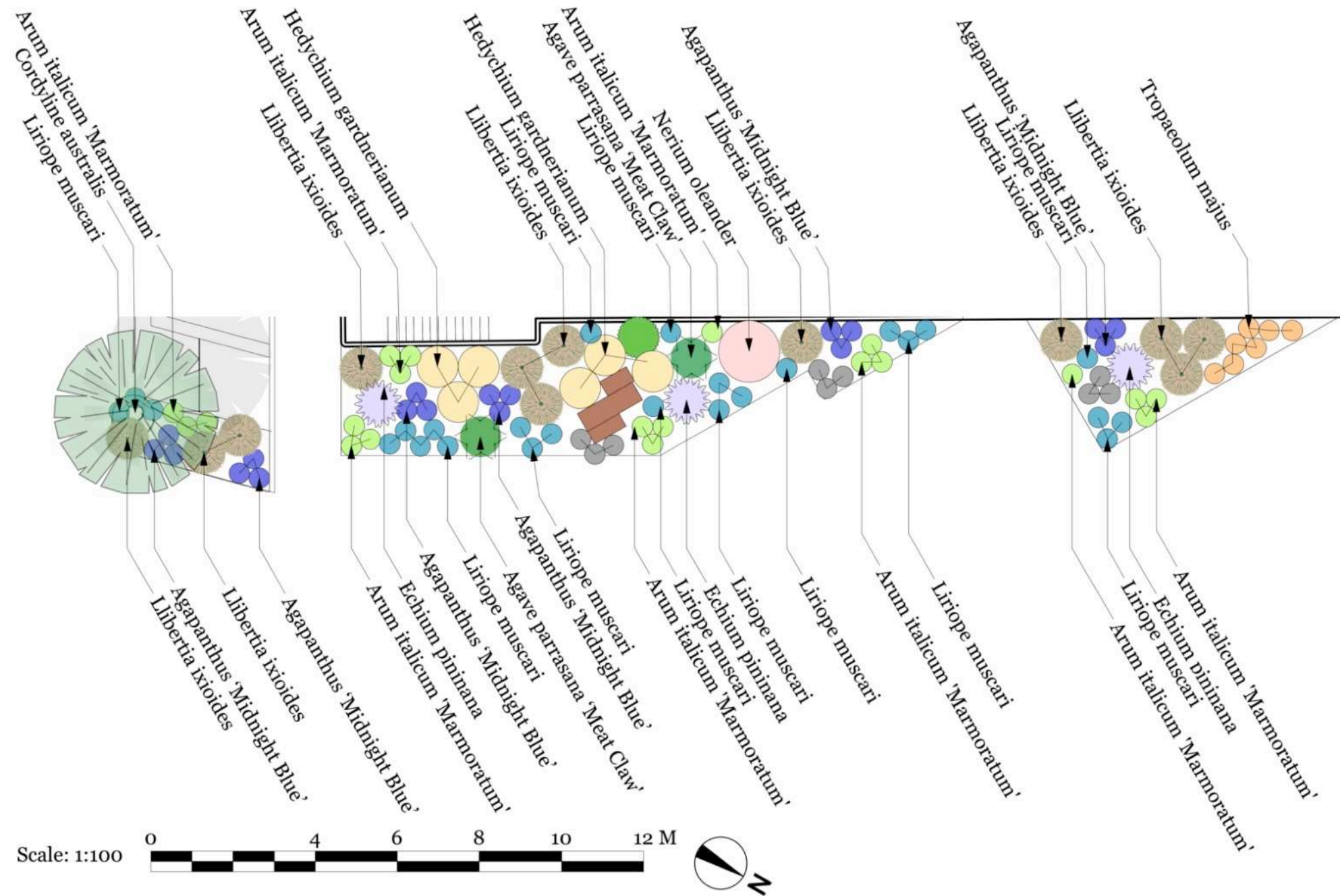
VISUAL OF THE FRONT GARDEN.



VIEW OF BACK GARDEN FROM FRENCH DOORS (LOOKING NORTH-EAST)

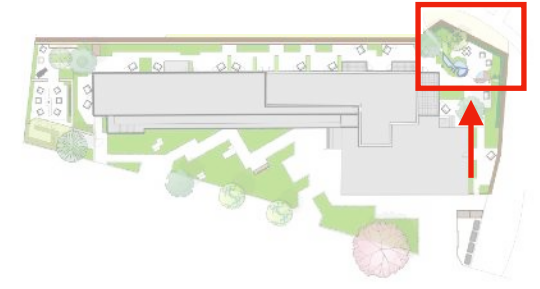






Botanical Name	Size / Type	Qty.
Cordyline australis	Standard / 1.5m	1
Nerium oleander L.	5L	1
Echium pininana	9cm	3
Echium pininana	Seeds	1 packet
Hedychium gardnerianum	9cm	6
Agave parrasana 'Meat Claw'	2L	2
Tropaeolum majus	9cm	7
Agapanthus 'Midnight Blue'	9cm	18
Liriope muscari	9cm	22
Arum italicum 'Marmoratum'	9cm	20
Libertia ixioides	9cm	12





IMPRESSION OF THE WEST CORNER OF THE GARDEN ON A SEPTEMBER AFTERNOON.

These are visual impressions of the garden signifying design intent and are not to be taken as picture perfect replicas of the completed garden.



IMPRESSION OF THE WEST CORNER OF THE GARDEN AT NIGHT.



ENTRANCE TO THE QUAD (LOOKING NORTH-EAST)



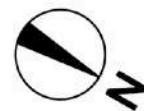
FAR END OF THE QUAD (FACING SOUTH-WEST)


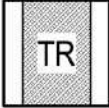


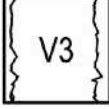






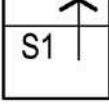
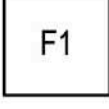
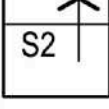
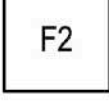
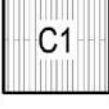

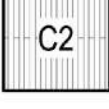
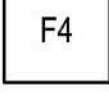


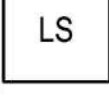



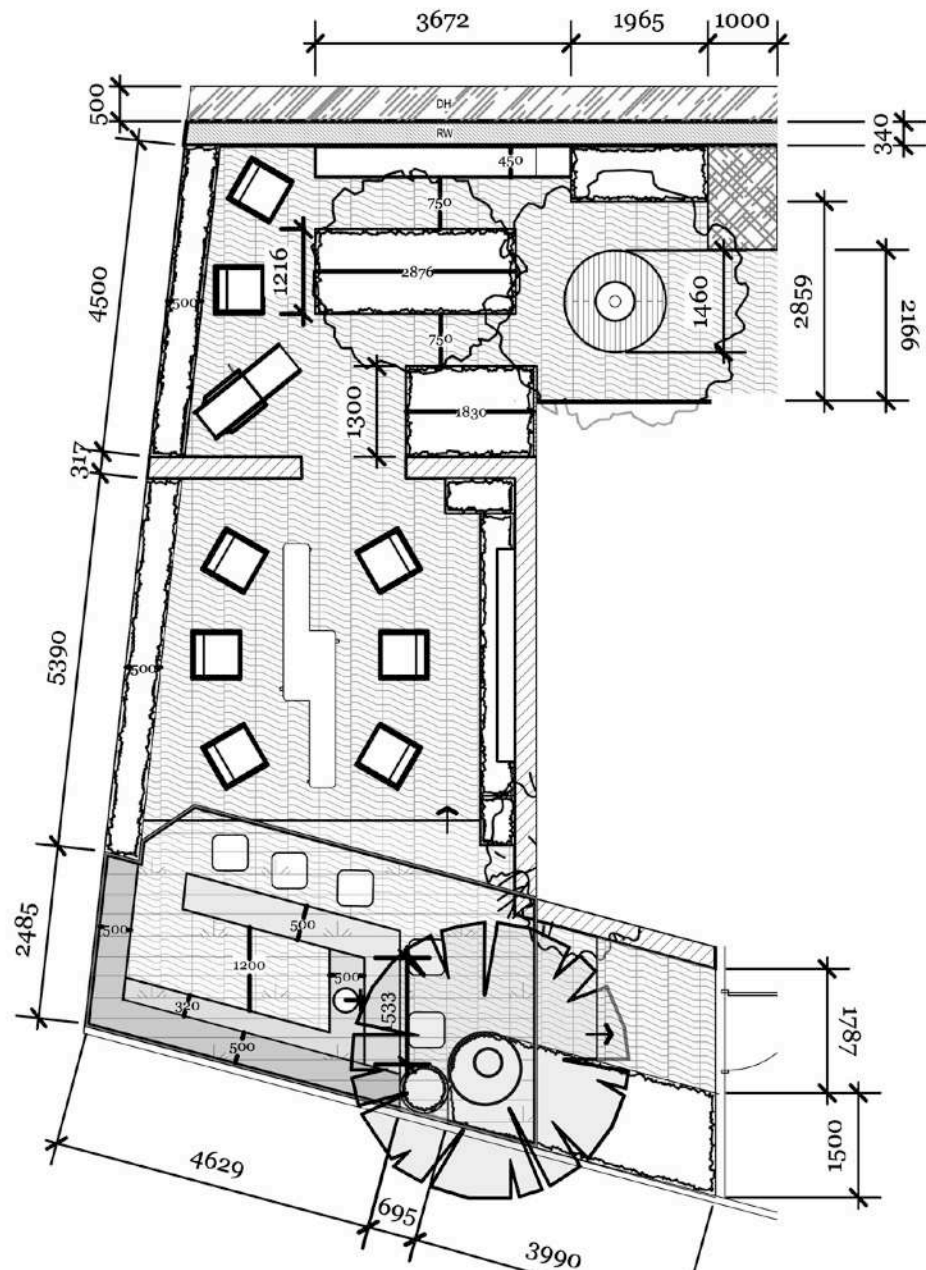
MAIN SQUARE OF THE QUAD (LOOKING NORTH-EAST)



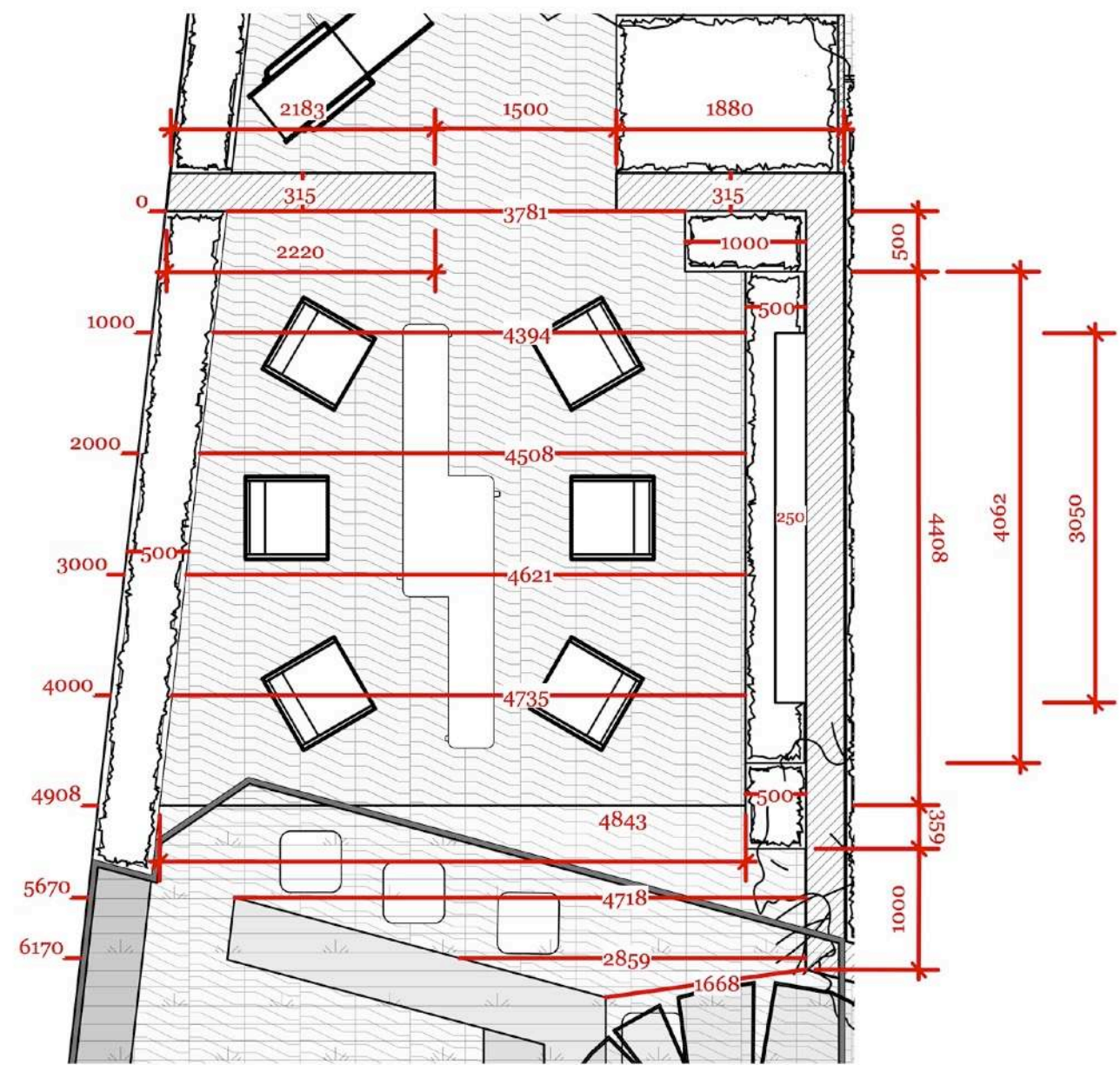
Scale : 1:100



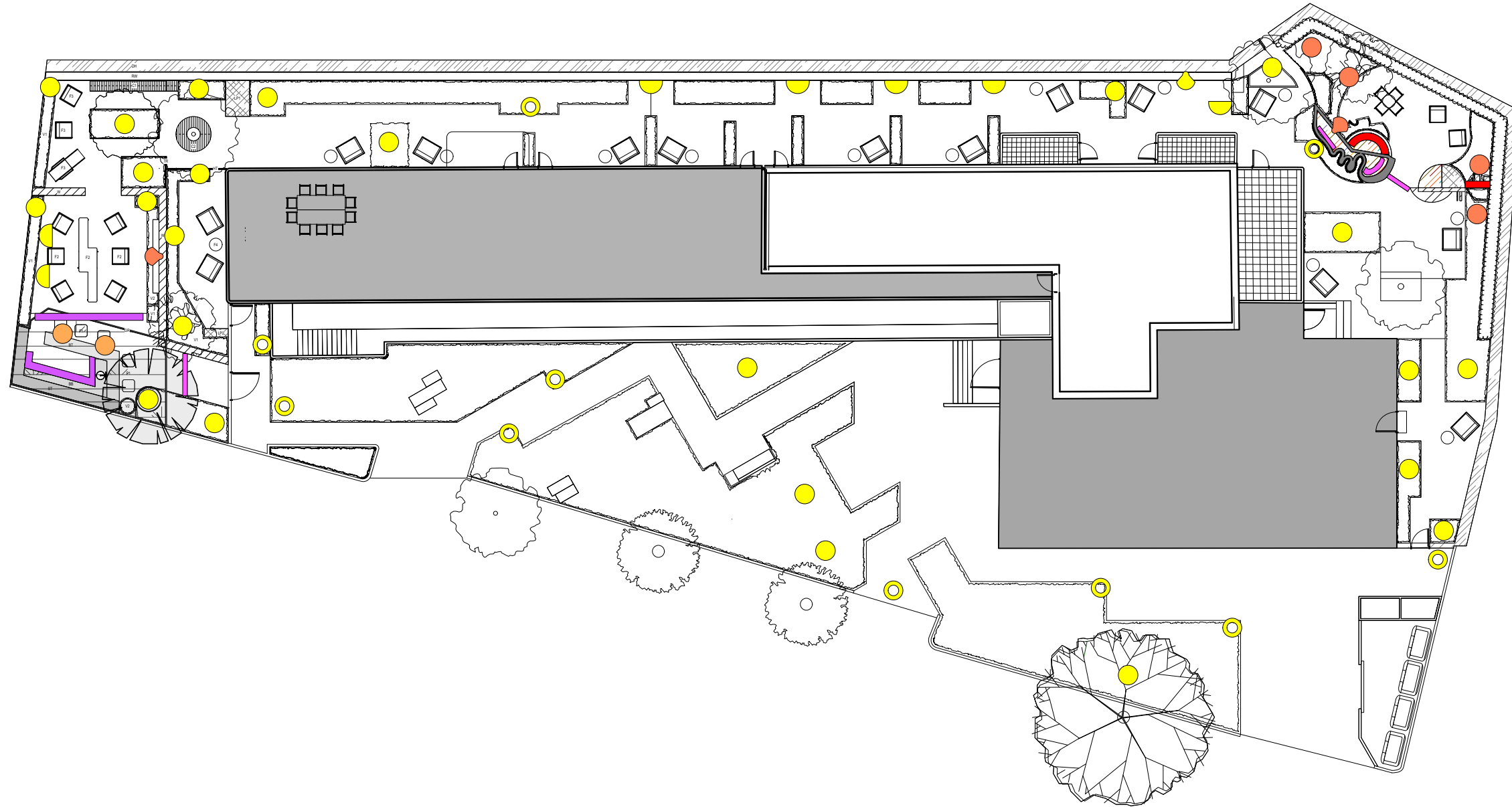
	Ornamental planting bed		Trellis with diagonal crossed slats
	Weathered steel planters		Horizontal slatted trellis
	Sunken ornamental planting bed		Freestanding wall
	Storage shelves and compartments		Log pile of 1m long logs
	Bar back shelves		Log pile of 350mm long logs
	Bar top		Step into bar area
	Seating area at bar with stools		Step out of bar into entertainment area
	Central large seating area		Canterlevered bench
	Courtyard seating area		Gabion bench around tree
	Residential seating area		Retaining wall
	Greenroof		Living sculpture mounted onto wall
	Deadhedge		



1 Setting Out Plan (South Side)  
Scale: 1:100



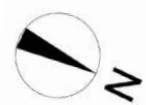
2 Isobar Setting Out Plan  
Scale: 1:50



SYMBOL KEY	
	Path Light
	Wall Light
	Bollard Light
	Spot Light
	Linear Light

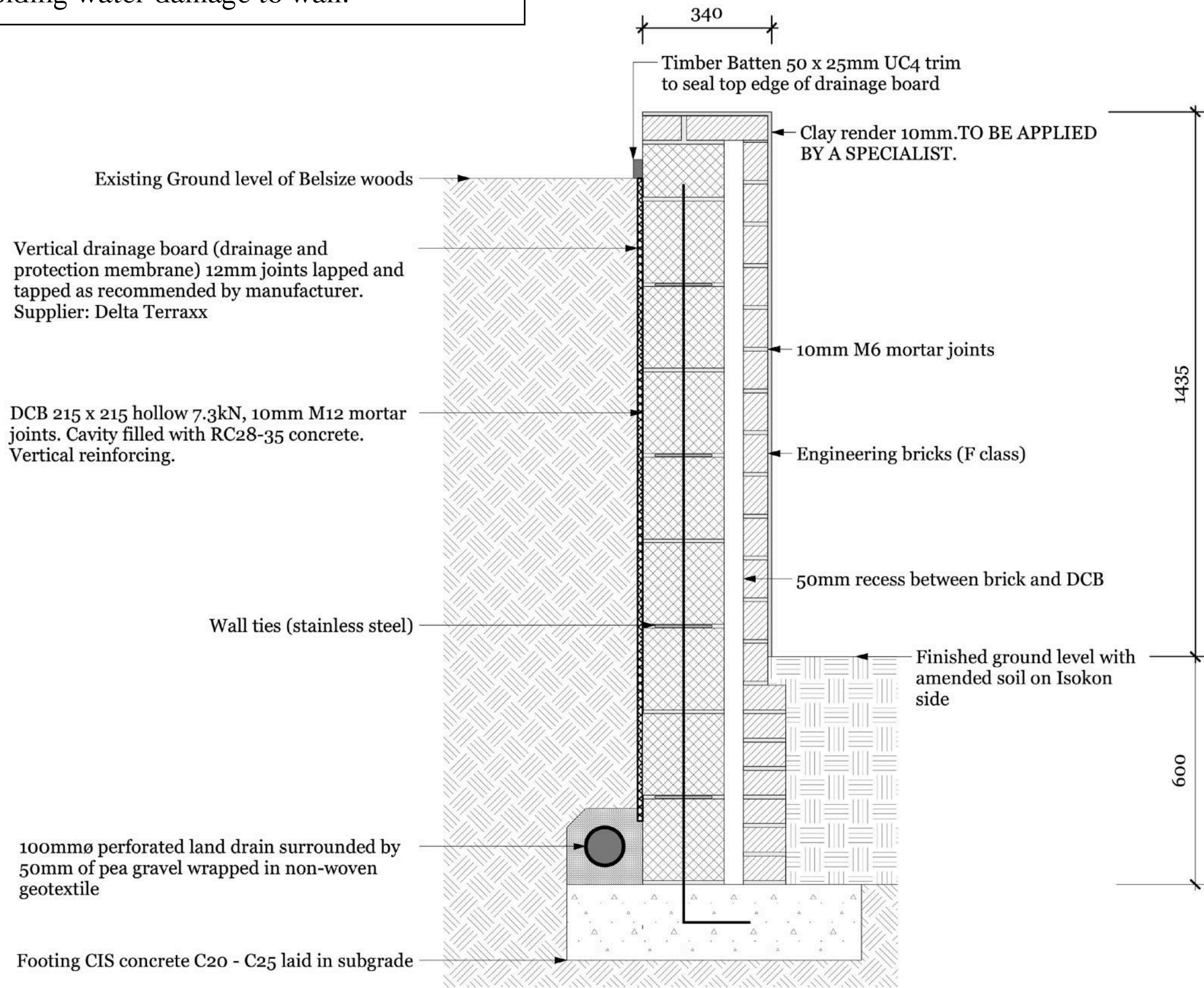
COLOUR KEY	
	2700K
	2500K
	2200K
	Red

Scale : 1:200

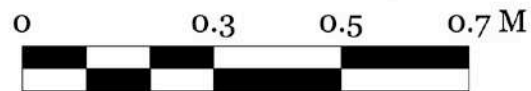




This method eliminates the need for weep holes while still draining and avoiding water damage to wall.



Scale  
1:10





**ROBERT KESHAM AIDATSARRAN**

EMAIL: bobkesh@hotmail.co.uk



INSTAGRAM: @2SPADEKESH

## SKILLS

Vectorworks / Sketchup / Photoshop /  
Twinmotion / Construction Drawings /  
Garden Maintenance / Rain gardens /  
Storytelling / Public Speaking /  
Living Walls / Teaching

## ABOUT ME

I moved into horticulture inspired by the relationship between people's environments and their quality of life. I love sustainable design and enjoy construction drawings.

## CAREER

2022 - Current	- Maintenance Gardener	- Meristem Design
2022 (WE)	- Garden Nursery Assistant	- Walworth Garden
2022 (WE)	- Landscaper	- Walworth Garden
2021 (WE)	- Conservation Nursery Assistant	- Kew Gardens
20148 - 2019	- Administrator & Project Manager	- Kingston Study Centre

## EDUCATION

2023	- Garden Design (Dip)	- KLC
2021 - 2022	- Horticulture lvl 2 (Dip)	- Walworth Garden
2018 - 2020	- Novel Writing (MA *Distinction)	- City University of London
2016 - 2017	- Writing A Novel (Cert)	- Faber Academy

## VOLUNTEERING

2021 - Current	- Gardener for The Royal Parks.
2023	- Maintenance for Sonia Kamel "Willow Crown Planters" at Hampton Court Garden Festival
2023	- Garden maintenance at Hampton Court Palace. Work experience.