



**anouk jentgen**

**portfolio**

**july 2024**

# House at Kew Gardens

Designing an adaptable, eco-sensitive home for Mrs. and Mr. Gallagher, a middle-aged couple nearing retirement. Key goals include ensuring the home adapts to their changing needs, while reflecting the couple's unique tastes.

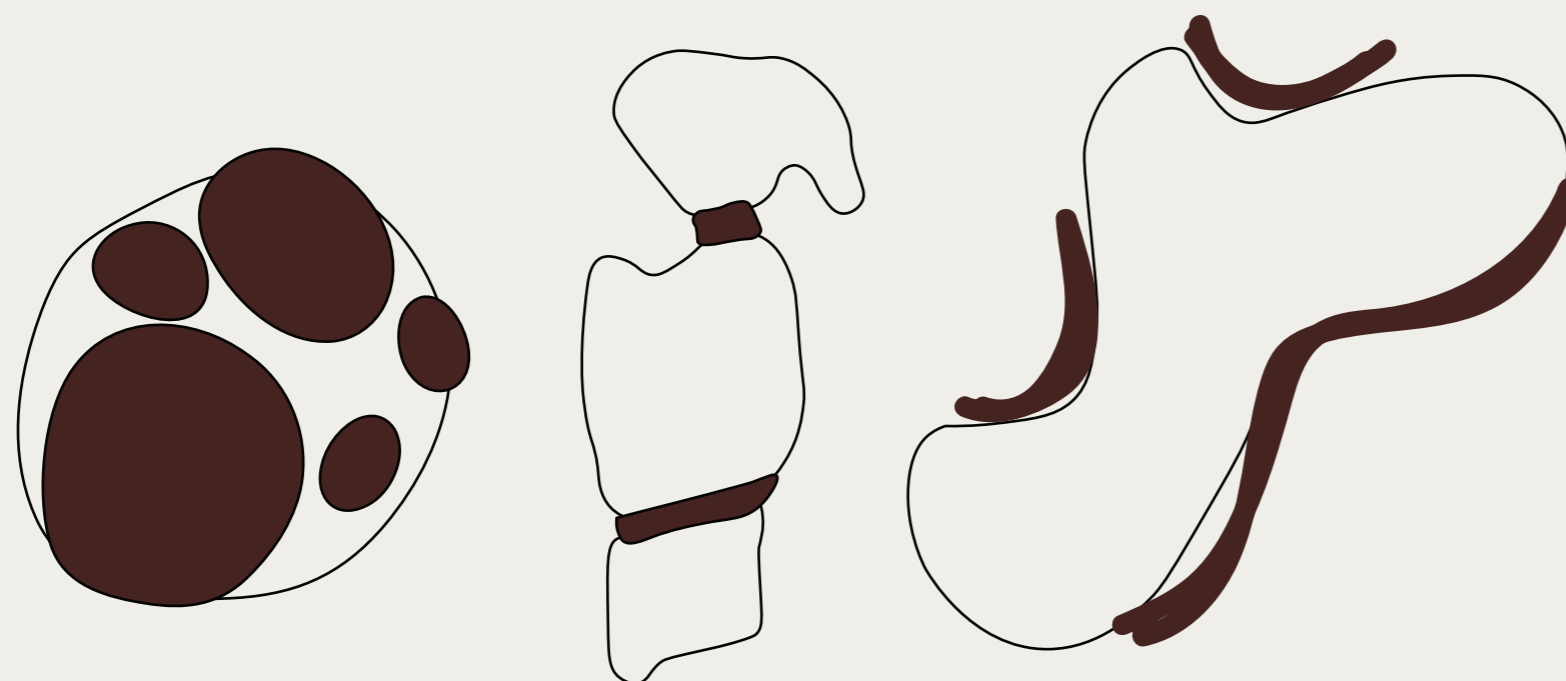
Mr. and Mrs. Gallagher have lived their lives keenly aware of the challenges of their times. With a deep sense of belonging, a love for others, and intellectual curiosity, they are always prepared for whatever life brings their way.



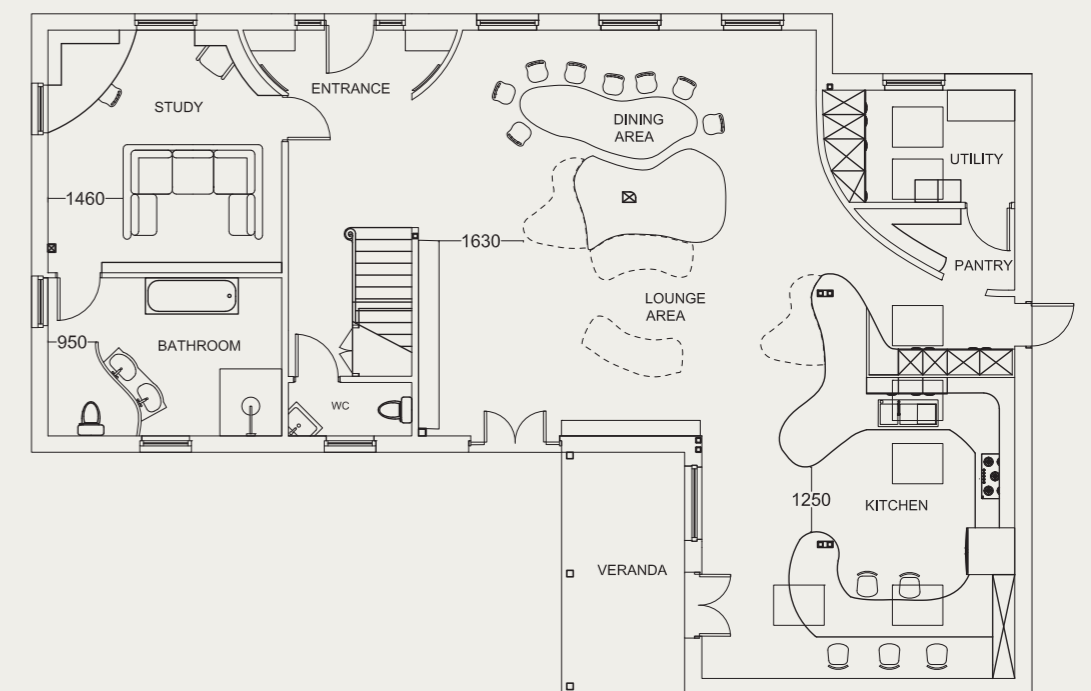
This instinct to change reminded me of popcorn popping. What fascinated me about this reaction is the core from which it erupts and the spontaneous shapes that emerge from it.



View of the dining and lounge areas from the entrance

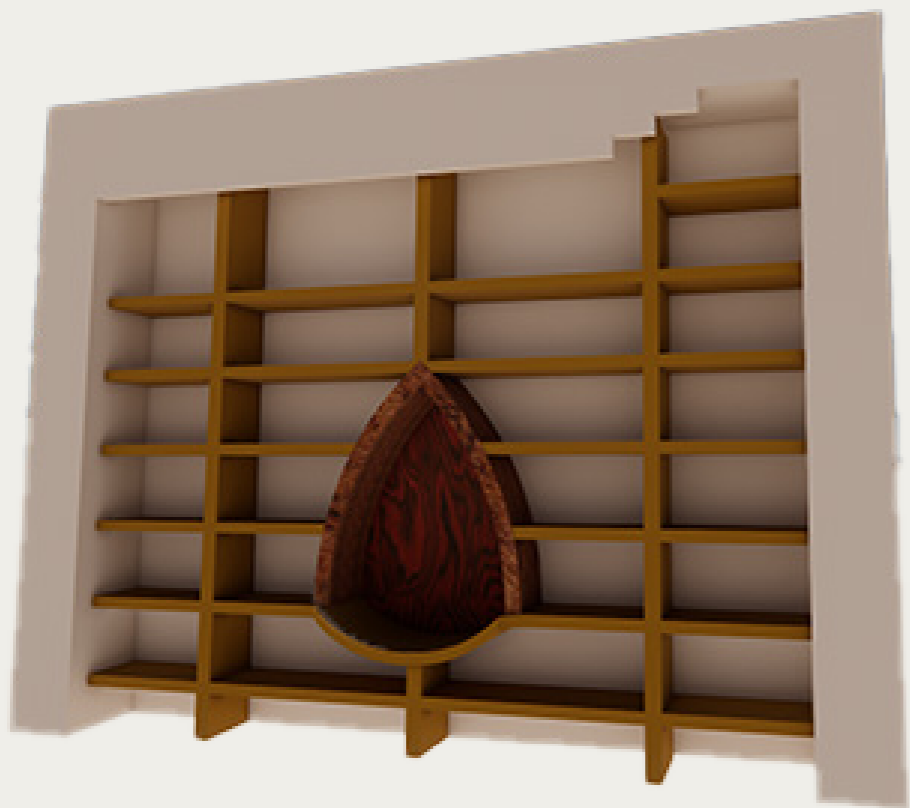


Evolution of the center of the house: the stove



Floor plan (not to scale)

Bespoke furniture



Reading nook incorporated into the bookshelves



Dining table shaped to merge into the stove dining banquette



Stackable dining chairs



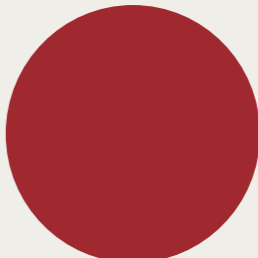
Bubinga wood veneer



Engineered Timber veneer



Engineered Timber veneer



Bench wood finished with red paint



View of the kitchen from the lounge area



View of the cocktail bar, incorporated in the stove and the reading nook from the kitchen



View of the stove in the lounge area from the reading nook



Collage of the study

# Pop-up shop

This project was commissioned by Eco, a sustainable eyewear brand.

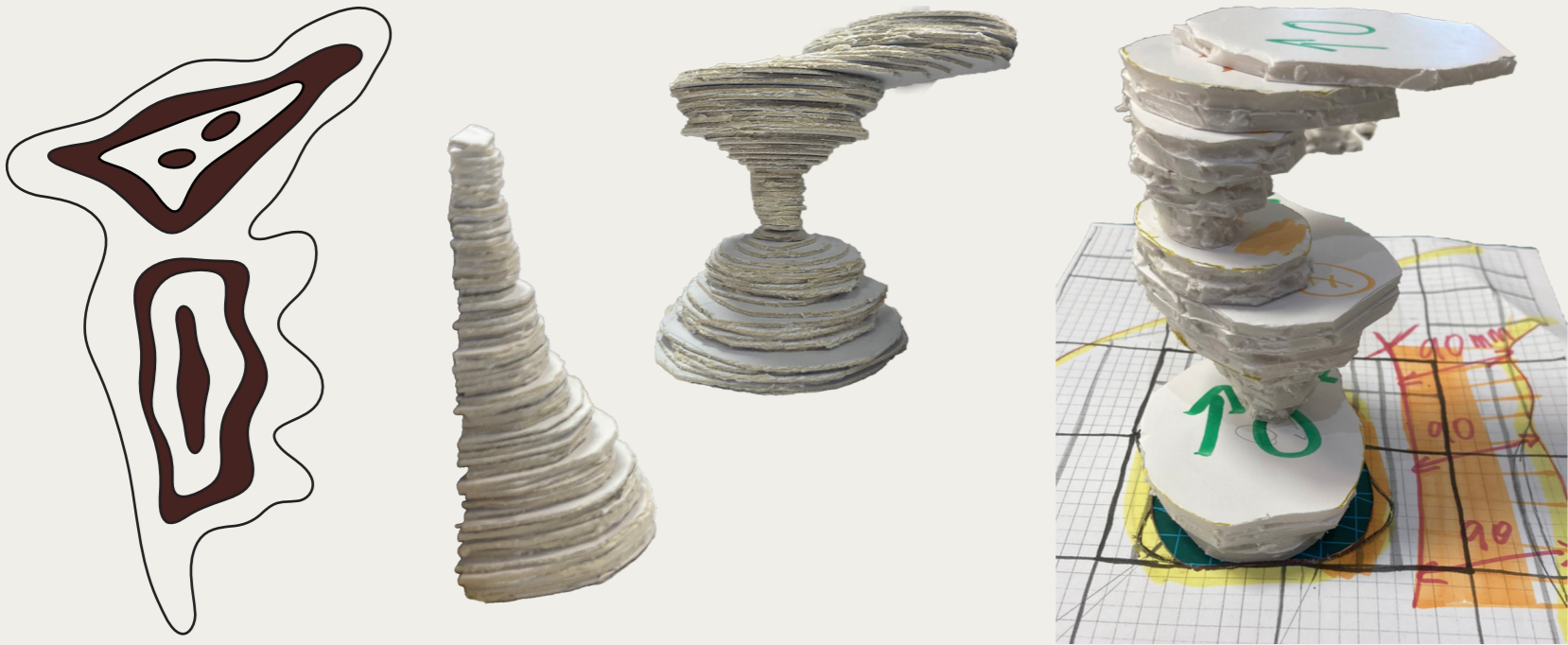
Eco's commitment to preserving oceanic ecosystems is vital to their ethos and business. This dedication manifests in various initiatives and practices designed to protect marine life and habitats.



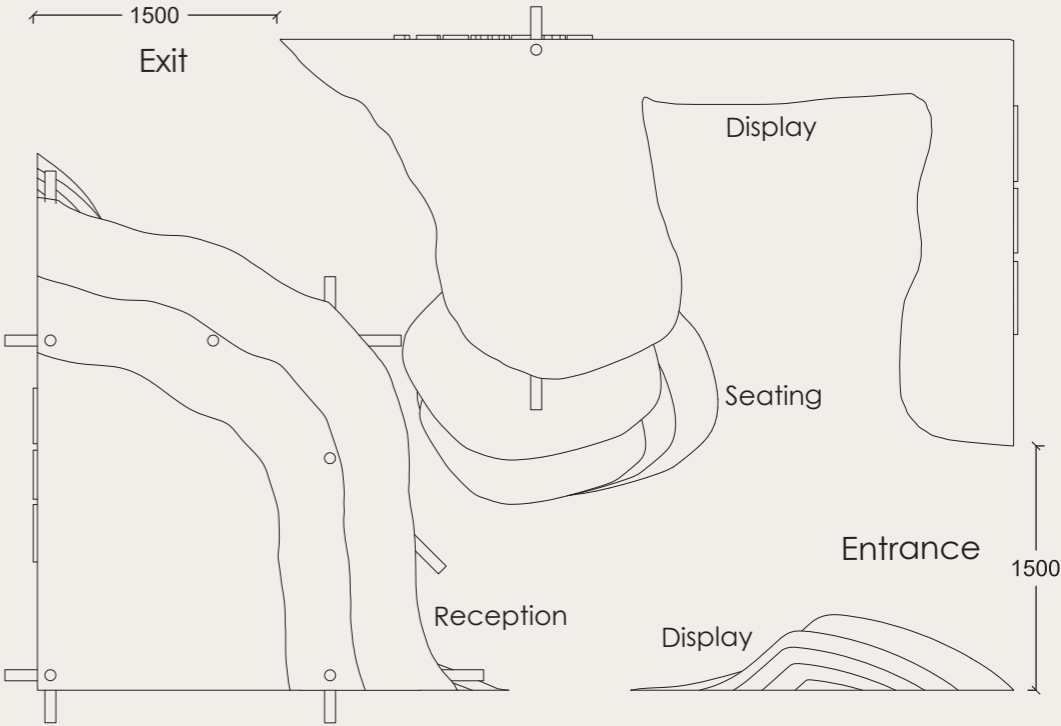
This emphasis on the ocean in their fight against global warming, highlighting its crucial role in well-being, reminded me of the symbiotic relationship between a clownfish and an anemone. What intrigued me is how the fish navigates the anemone's maze-like structure in a protective embrace.



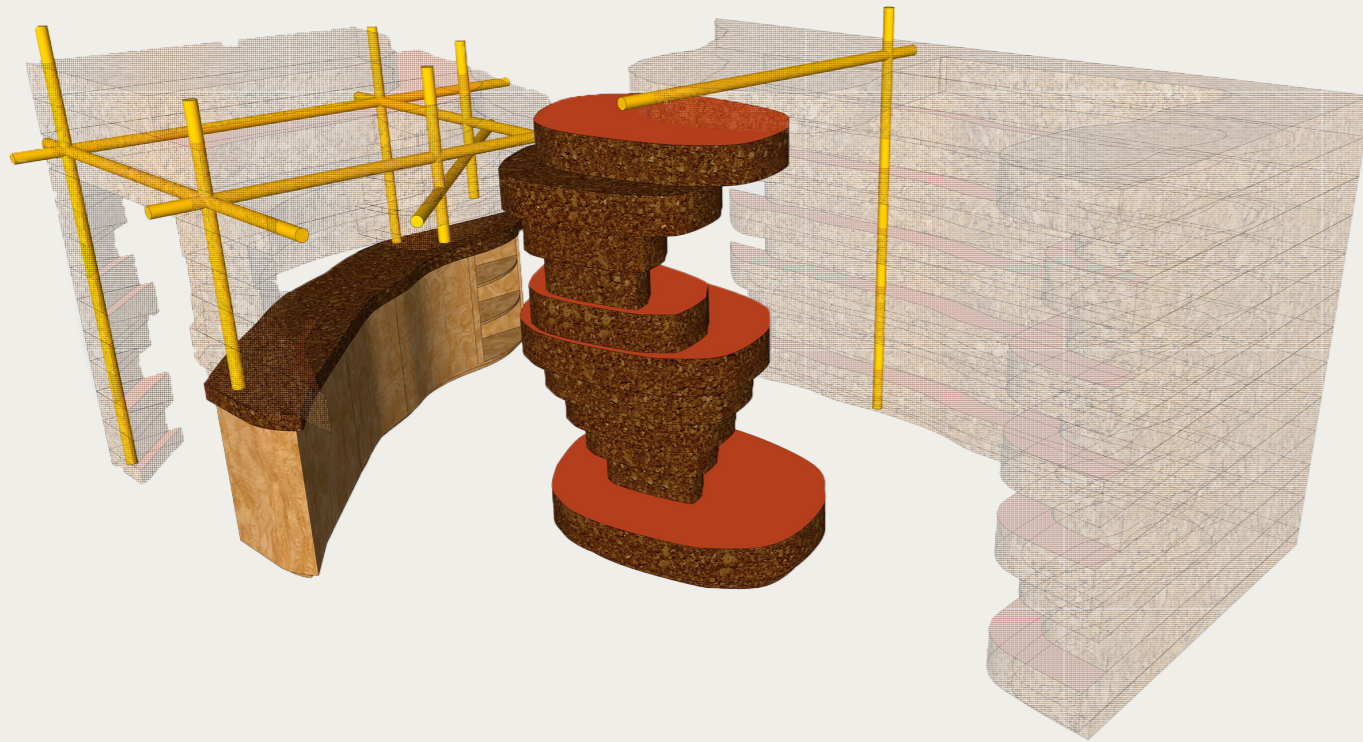
View of the pop-up shop from the exit



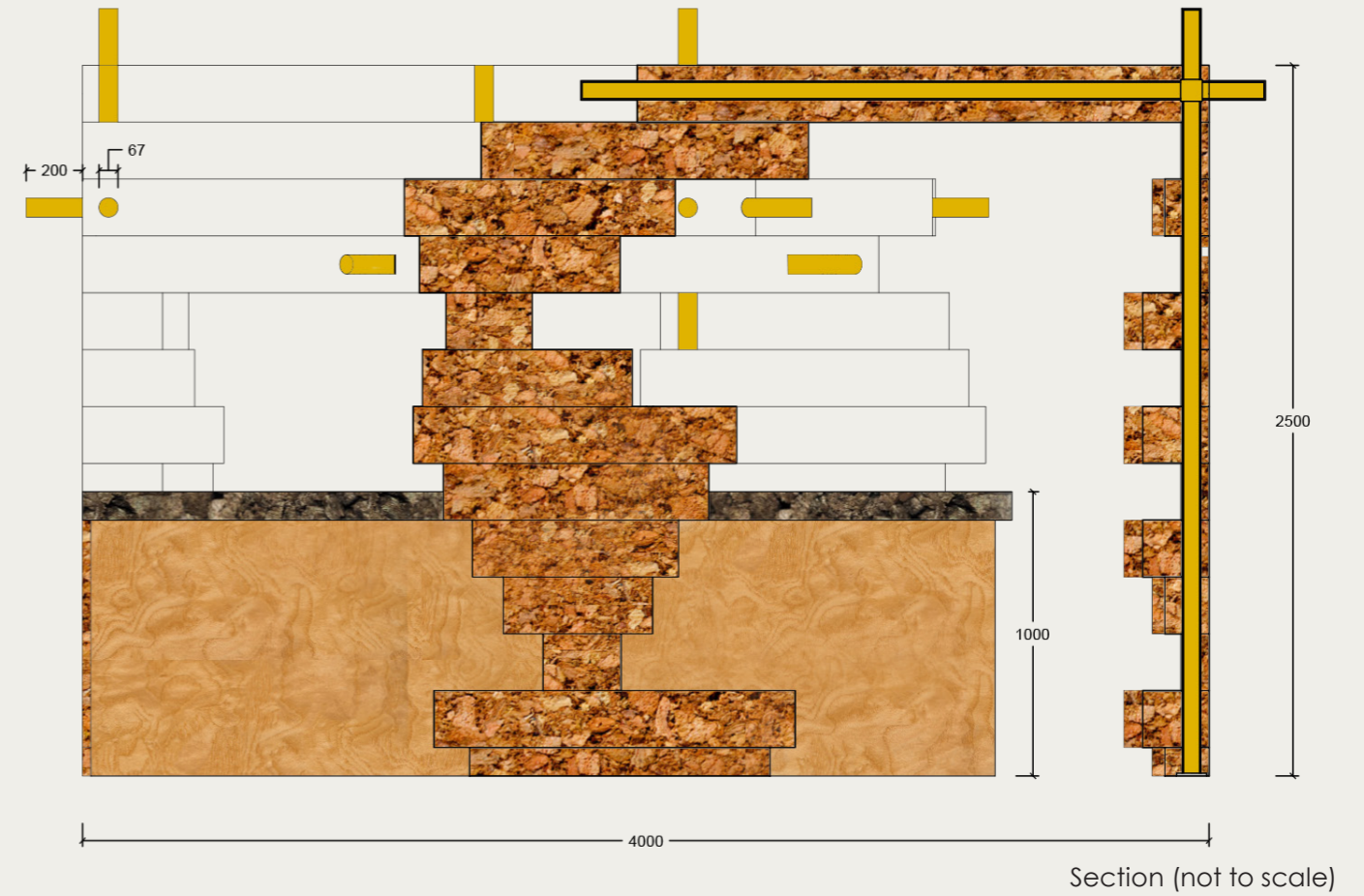
Evolution of the center of the pop-up oceanic structures



Top view (not to scale)



Construction details



Section (not to scale)



Light Cork



Orange rubber

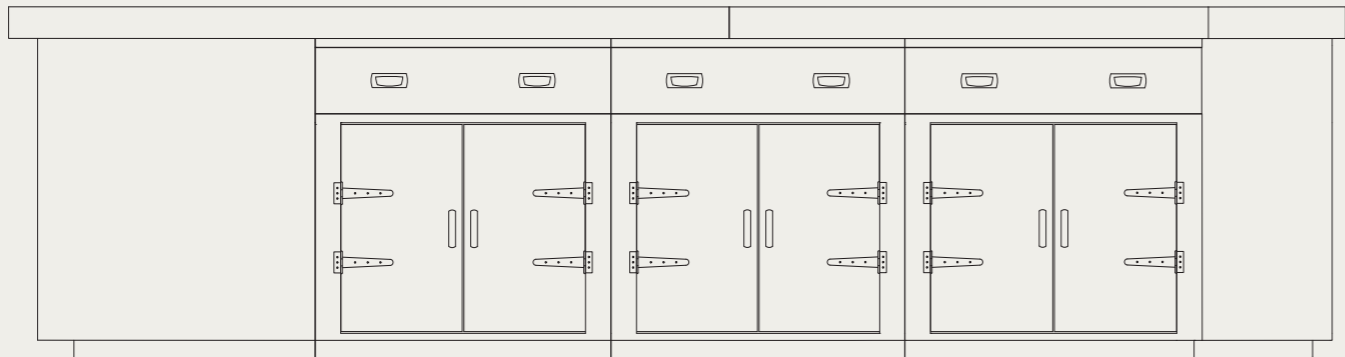


Alluminuim pole

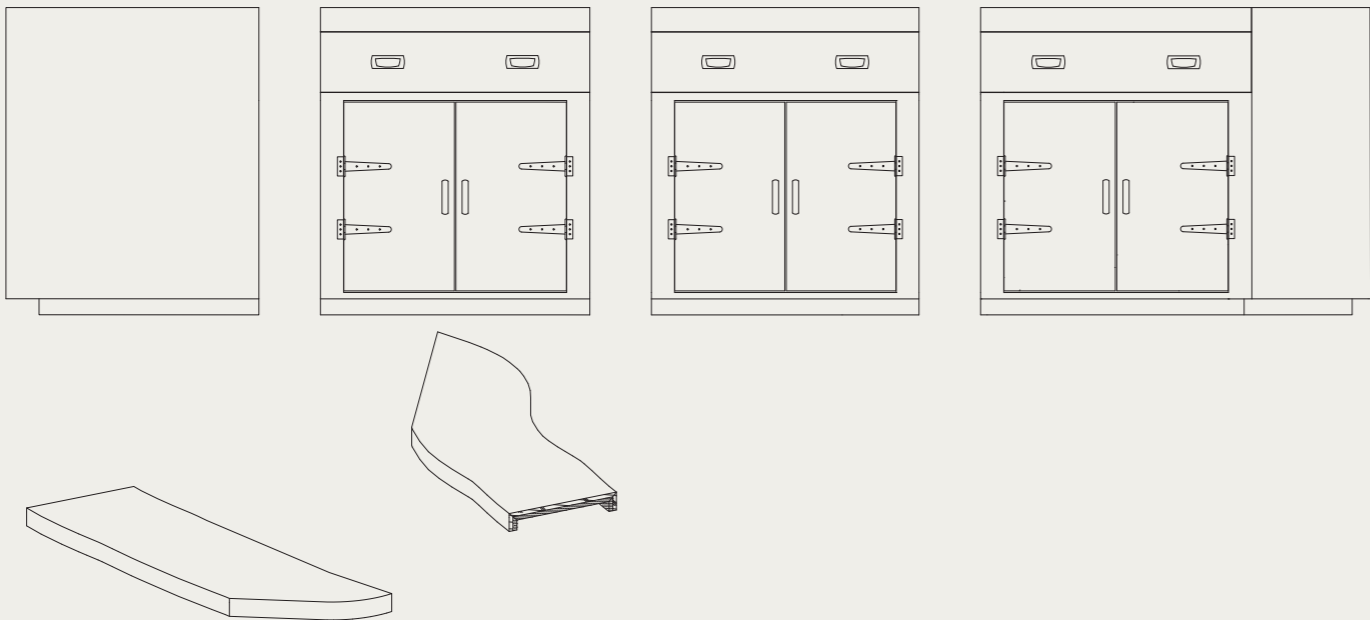


View of the pop-up shop from the entrance

Reception desk



Option 1 One piece to enjoy as a versatile and imposing retail reception desk



Option 2 Six pieces to easily transport and re-use in different circumstances



Front view



Expanded cork



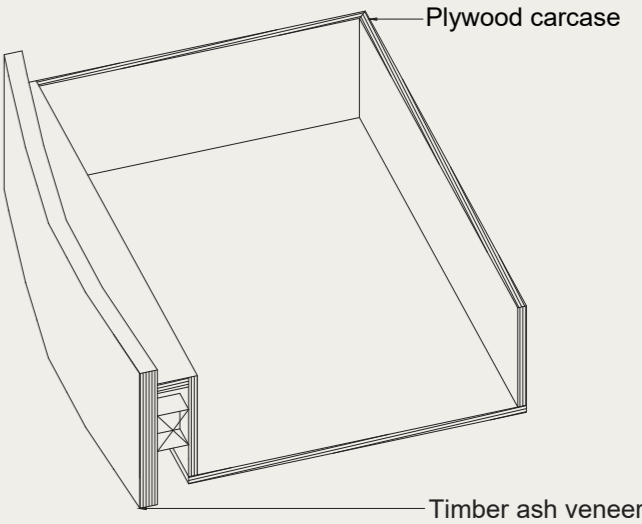
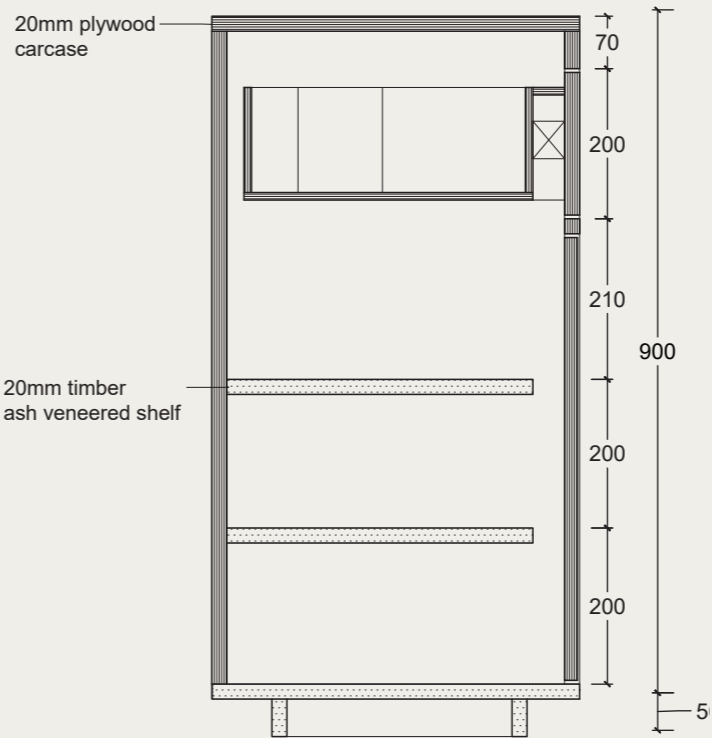
FSC certified burl ash timber veneer



FSC certified plywood



Front view of the reception desk in the shop



Desk and drawers sections (not to scale)

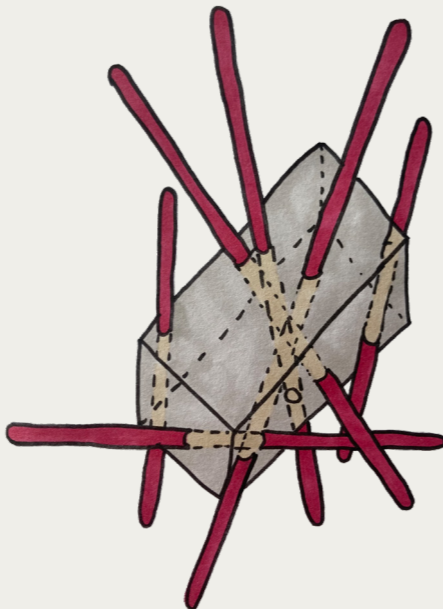
# Flat at Battersea Power Station

Designing a 2-bedroom flat for a young couple. Key goals include a space for hosting regularly while keeping a comfortable feeling.

The couple has often expressed their love for film noir and Impressionist art. Both movements are marked by a strong sense of nonconformity within their respective histories. Demonstrating how challenging the status quo can lead to profound and innovative disruptions.



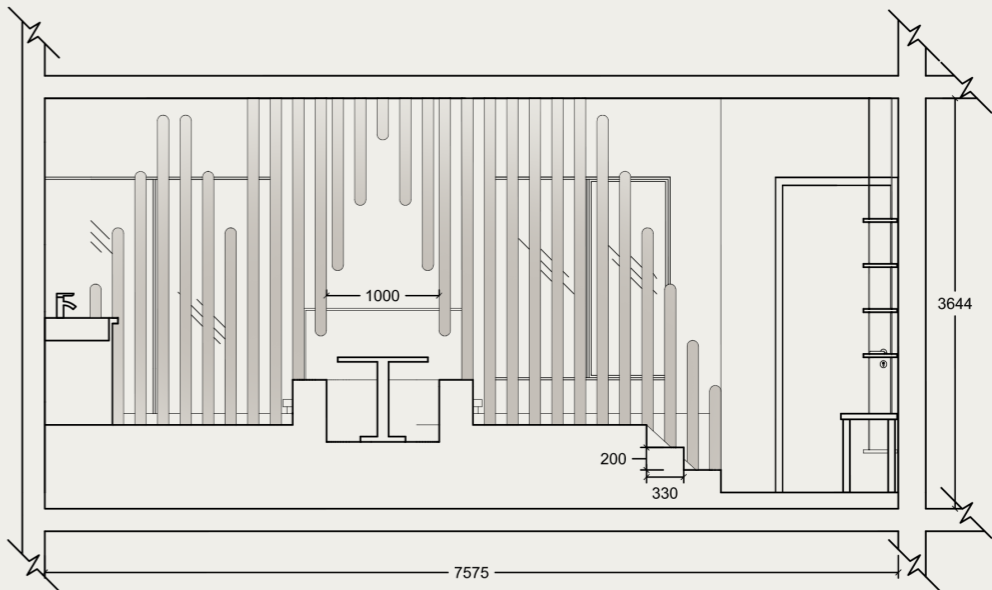
This tendency towards disruption reminded me of an object plunging rapidly into water. What fascinated me about this splash was the distinct sense of before and after the action, leaving a mark behind.



Initial inspiration sketches



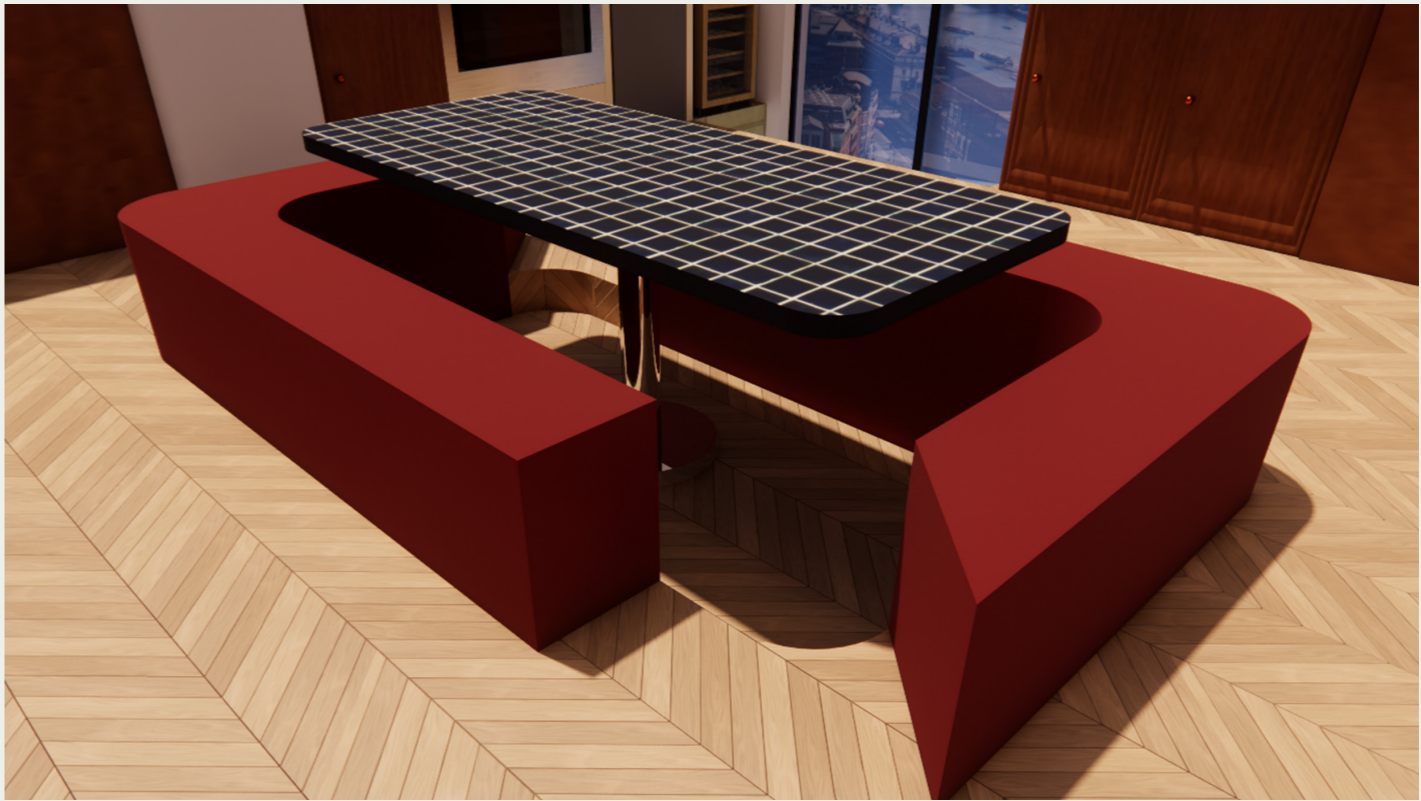
View of the sunken living room and the kitchen behind the poles



Section (not to scale)



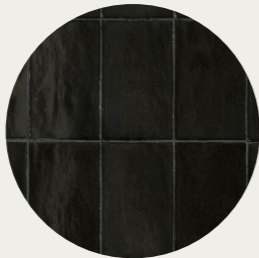
View from the entrance



Bespoke sunken dining table



Oak parquet



Glossy tiles  
for dining table



Glossy red  
painted benches



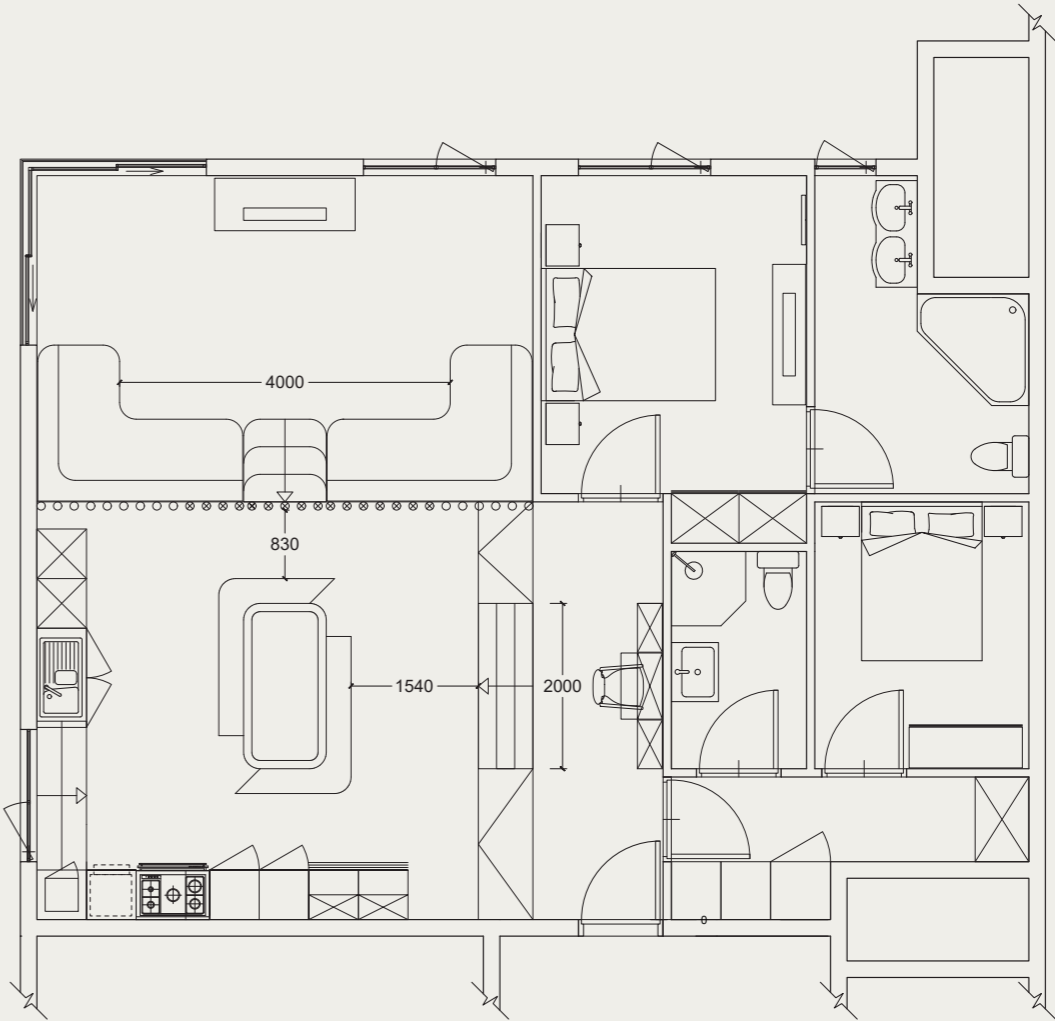
Glossy tiles  
for platform ramp



Glossy tiles for  
the kitchen walls



Soft dark green  
velvet for the sofas



Floor plan (not to scale)

anouk.jentgen@gmail.com

+44 (0)738 0131 303

Based in London

**anouk design**

