



SmartDesign

Residential & Commercial  
Interior Design

# ACADEMIC PORTFOLIO

YULIA KHRIPPENNIKOVA. KLC SCHOOL OF DESIGN.  
2023

# ACADEMIC PORTFOLIO

YULIA KHRIPPENNIKOVA. KLC SCHOOL OF DESIGN.  
2023

# contents

01

introduction  
p. 3-4

02

hospitality  
p. 5-10

03

co-working  
p. 11-15

04

pop-up  
p. 16-21

05

group project  
p. 22-24

06

reception desk  
p. 24-27

07

residential  
p. 28-32

08

contact  
p.33

# 01. introduction



My name is Yulia Khripennikova, and I present Smart Design Studio to create residential and commercial spaces for happiness and comfort. I started my career as a translator in an international construction company, and after completing my degree in economics, I worked in the financial field in a world-wide international company. In my childhood, I dreamed of becoming a designer. And one day I decided to start a course in interior design at the London School of Design (KLC). I approach each project with energy and a desire to create a unique design that will take into account the wishes of the client. The interiors of my design tell a story about its inhabitants and users—the convenience and comfort of interior solutions for everyone who will use it and live in it. The approach to design as an art object includes elements of layering, senses, and immersion. Each project is special for a particular Customer, thanks to an attentive attitude to history and culture, careful research of materials, colors, and shapes, and a balanced combination of new and old, external architecture, landscape and interior space, natural and artificial materials, combining the identified nuances in the process of research with a specific customer character to create a space for his request. I am inspired by the Renaissance and the Bauhaus.



# key values

## unique



design based on the character, habits of the client, the values of the business brand, its identity and its consumers, taking into account the architecture of the space and the uniqueness of the environment

## sustainable



natural eco-friendly solutions - from recycled, recyclable, reused materials; eco-friendly production materials

## energy efficient



use of energy-efficient solutions for lighting, water consumption, heating and ventilation

## art and craft



the use of unique, limited-edition art objects made by modern craftsmen, or found at flea markets

## history



reinterpretation of the client's history and the location of the object inspires the creation of an interior that tells about its inhabitants and users

## inclusivity



convenience and comfort of interior solutions for everyone who will use it and live in it



## ONGGI KimChi London Restaurant

The Brief was to create a hospitality space combining restaurant, retail, chef's table, co-working, masterclass space, lounge. The site is in London Hackney, in the place famous with its gardens, vibrant life, and people of creativity, restaurants, cinemas and theaters. Building of U-shape refers to Georgian epoch. People will come for socializing, having their meals and learn more about Kimchi and Korean culture and traditions, and learn how to cook Kimchi themselves. The space gets the customer to enjoy the experience of a rural life in a modern interpretation, shows them the healthy qualities of the fermented food and why they need this product.

### MOMENTS ENGRAVED IN MEMORY

Design devoted to tradition of healthy life, Korean culture in a vibrant location of Hackney in the atmosphere of interior giving a feeling of visiting mom's home or a close friend's dinner



*"Memory is the scribe of the soul" - Aristotle*



NHS LAVA RED TERRAZZO RESIN



[HTTPS://CLAY-WORKS.COM/COLOUR/#](https://clay-works.com/colour/#)



DERBY TERRAZZO UNTAMED



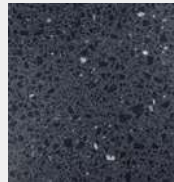
OAK BOARD FLOOR



KALEO TERRAZZO ESSENTIAL



[HTTPS://D2EKNDZEK2EK.COM/EXCINERE/#EX-CINERE-STORY](https://d2ekndzekd2ek.com/excinere/#EX-CINERE-STORY)



WATERLOO ARCHITECTURAL



OAK FLUTED MDF PANEL



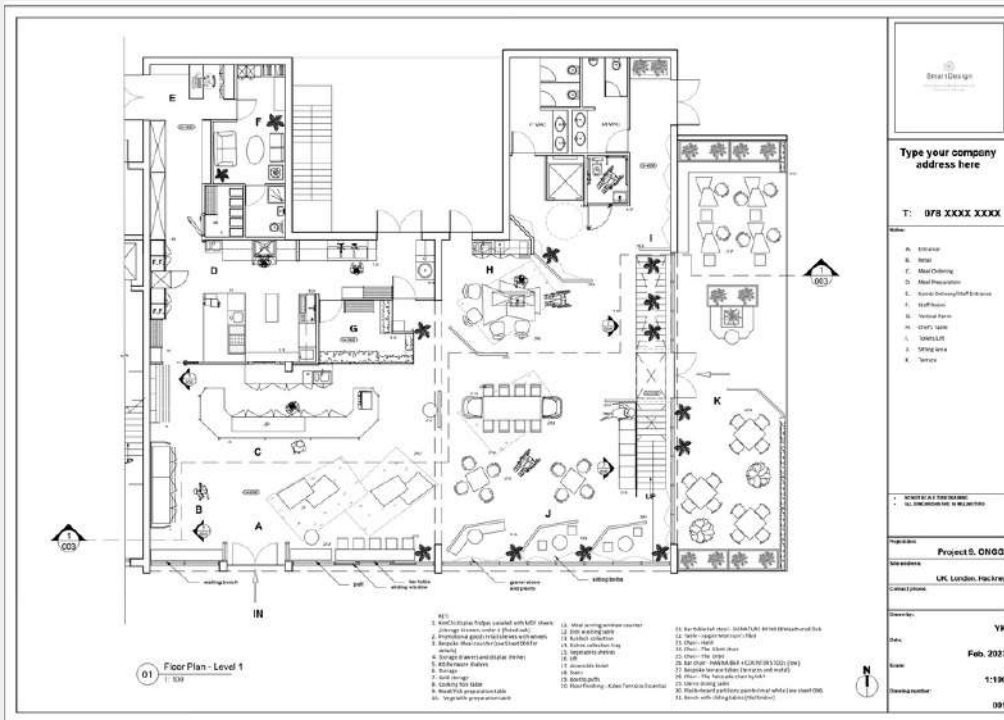
YULIA KHRIPPENNIKOVA. KLC SCHOOL OF DESIGN. 2023. HOSPITALITY







YULIA KHRIPPENNIKOVA. KLC SCHOOL OF DESIGN. 2023. HOSPITALITY



Smart Design

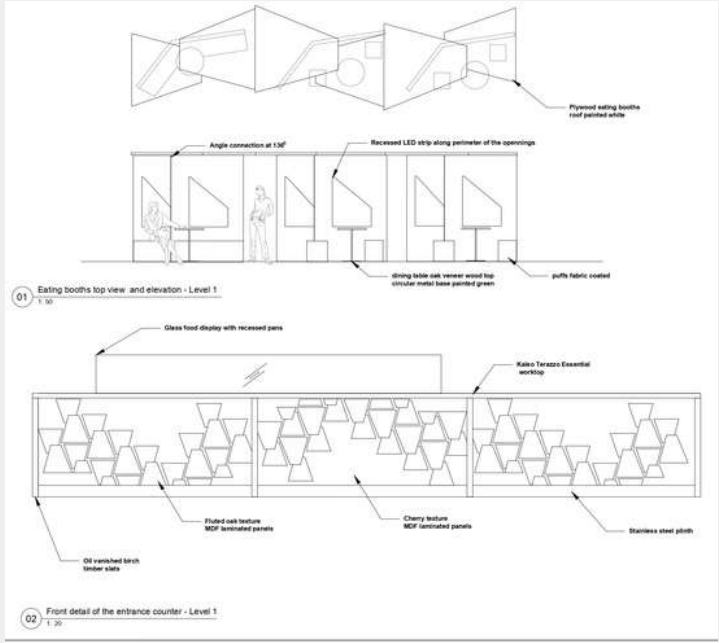
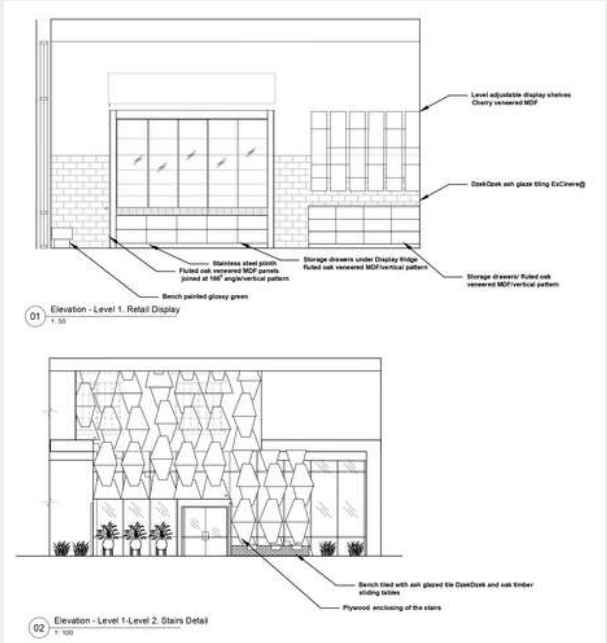
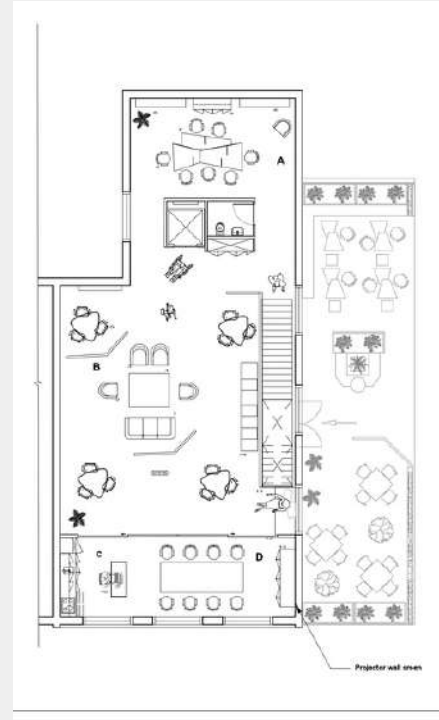
Type your company address here

T: 078 XXXX XXXX

A. Entrance  
 B. Bar  
 C. Main Dining  
 D. Main Reception  
 E. Space Delivery/Staff Entrance  
 F. Staff Room  
 G. Service Area  
 H. Staff Wash  
 I. Storage Area  
 J. Service  
 K. Service

\* SERVICE AT THE DOOR  
 \*\* SERVICE AT THE BAR

Project: **Project G. ONOZI**  
 Location: **UK, London, Hackney**  
 Date: **Feb. 2023**  
 Scale: **1:150**  
 Drawing Number: **091**





*Meal counter/Reception*



*Chef's table*



*Co-working space*

SKILLS:  
Technical drawings  
Furniture design  
Brief Proposal  
Presentation to Client  
3D Renders



## Co-working space

The Brief was to create a relaxed, energetic and collaborative environment where clients will love to come to work, be effective in their creativity, and interact productively working on their art pieces. The space includes café area/art and retail gallery, office and co-working spaces. It will have printing services and workshops to screenprint art prints, gig posters, t-shirts and tote bags. The location in Canada, Montreal, Little Burgundy. The area is rich about its history and culture and local designs are inspired by Indian cloths patterns, jazz bands, ceramic murals, river, industrial background.

### BEYOND THE FRAME

the PrintScreen process and equipment of rectangular shapes of the frames made of wire squares (grid) and metal spring mechanisms was an inspiration of the design. A colorless negative of the image an artist wants to create is imbedded and then the frame is filled in with a colorful liquid/ink. After pressure the negative transforms into a different image. Line is the key technique for the artists which can take different shape, it is dynamic, strong, balancing. Flexible, biophilic and functional spaces will connect and blend like the ink which is flowing to the canvas.





1. Dark blue matte paint for wood VOC free 2. Wood texture for MDF for table worktops, wardrobe doors 3. White paint for walls VOC free 4. Old patina mirrors  
5. Dark blue color glass for partitions and furniture doors 6, 7 Hand made ceramic tiles glazed  
8. Metal (stainless steel polished and black matte painted) 9. Bolon organic flooring (ADV parket). 10. Velvet fabric for sittings, curtains 11. Wool fabric for sittings, pillows 12. Cornelia fabric for sofas 13. Artificial leather for sittings 14, 15 Velvet for sittings 16. Tarkett linoleum floor coating 17. Mesh painted dark blue 18. Smile Plastics panels for worktops

#### Chairs for dining tables



Dining chair  
H880; W600; D620



Corbin 9691-LM  
MATILDA  
H855; W630; D600



#### Chairs for high worktops



CURT, vintage brown  
H840(1040); W450; D500  
Office kitchenette,  
1st floor



ANT  
H905; W430; D480  
Office window tables,  
1st floor



UFO  
H790; W535; D500  
Co-working lounge kitchen,  
Ground floor



DOBRIN MASTERS  
601PP-LMZL  
H810; W505; D520



FLORES Green  
H870; W620; D650

#### Chairs for the terrace



Materials of wood, MDF, glass, metal, hand-made ceramics will achieve the concept goal of blurred borders and turning moments. Color palette is minimalistic of contrast blue, white and yellow-orange as a reference to the key colors of printing inks. Blue color has optical effect, it brings harmony, creativity, calmness, peace. Blue is the color used by sketchers, since it is easy to make digital copy of the sketch in Adobe Photoshop. Glossy blue floor and yellow-orange partitions brighten the space and help to reflect light, connect the interior to the location murals and colors of ink components. Paints used are VOC free. Fabrics of velvet, leather and cornucopia create tactile experience in the space, add warmth and welcoming atmosphere.





YULIA KHRIPPENNIKOVA. KLC SCHOOL OF DESIGN. 2023. COMMERCIAL



SKILLS:  
Research  
Concept development  
Technical drawings  
3D renders



# 04. pop-up



## Conceptual Design for Merchant's Heart

The Brief was to design a pop-up stand / space which represents the brand values. The stand should be unique, visually eye-catching and aim to attract new customers to the product / brand / service as well as enhancing existing brand loyalty. You must conduct extensive research into your chosen brand alongside wider research into temporary design, design for public spaces, possible locations and other relevant topics which can inform your design.

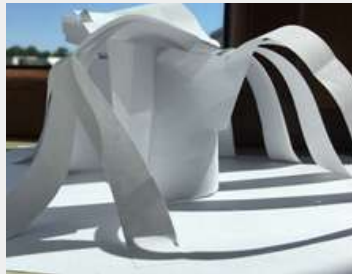
Identify, analyse and evaluate appropriate research and show evidence of design development, and generating new concepts and new insights into existing knowledge and research findings. Apply ergonomics, anthropometrics, and knowledge of structural technologies to create functional designs. Present a conceptual proposal that communicates key design ideas and demonstrate awareness of client brand identity.

## The Chemistry of Movement

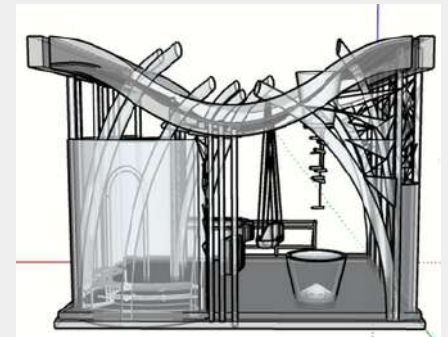




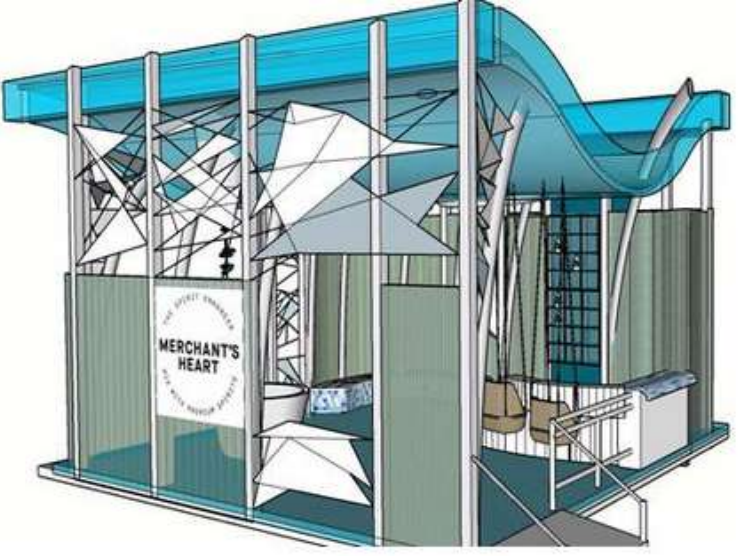
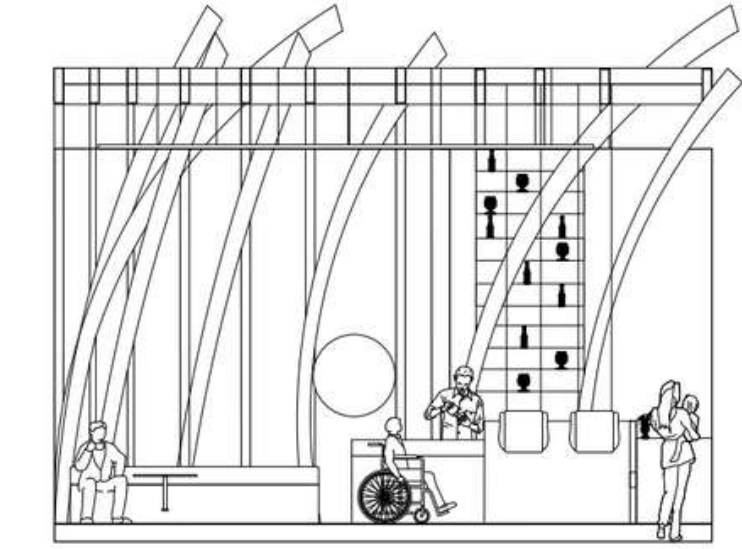
Materials applied: ETFE for roof and walls on metal framework; metal mesh for the roof; recycled plastic of marble texture for the bench and bar worktop; metal cladding for bar and water bowl; Colourful ETFE for the walls; marmoleum for the floor



The formula of creating a drink Gin + Glass + Garnish + Friends prompted the idea of the use of science elements for the concept development. The inspiration for the concept is coming from the carbonated water bubbles which actively and chaotically interact with each other. The concept should present dynamic elements and interactive functions within the space. Movement is the key word to the Japanese philosophy of the permanent development "kaizen", which client is following in their brand. Changeable structure of water is an invisible chemical process that creates the magic of transformation and emotions from all states of water in a single glass with an elegant drink served with joy.



SKILLS:  
Research  
Concept developing  
Sketching  
Modelling  
SketchUp  
AutoCad  
3D Render  
Presentation board







YULIA KHRIPPENNIKOVA. KLC SCHOOL OF DESIGN. 2023. POP-UP



# 05. ROUP RPROJECT



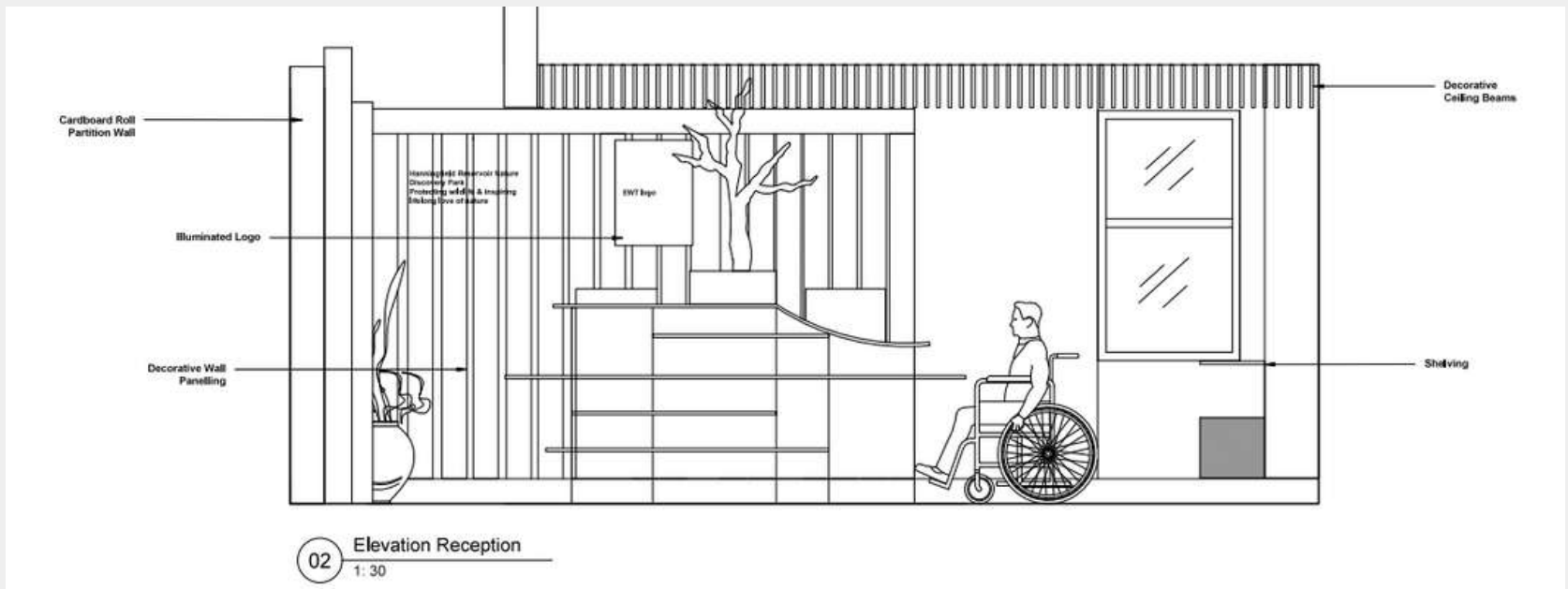
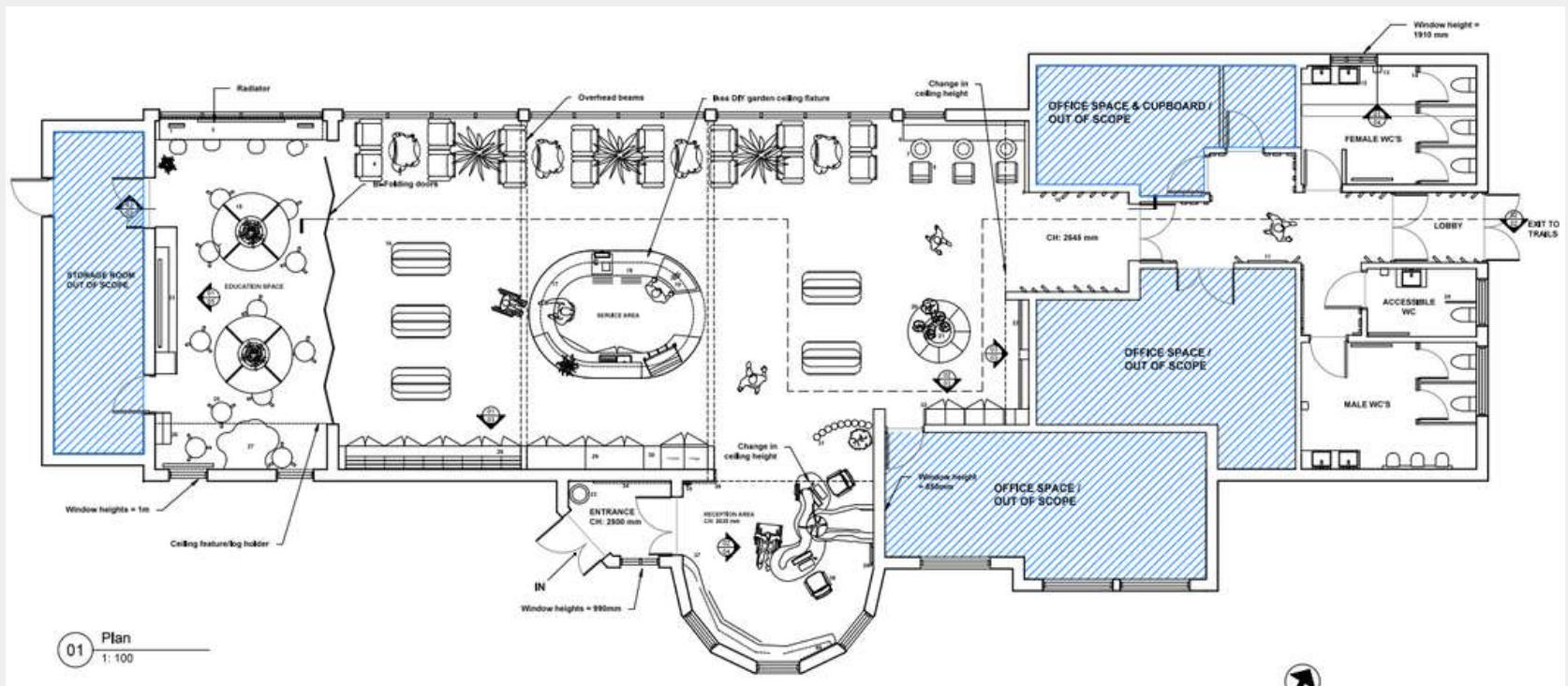
## Essex Wildlife Trust

The focus of this project is to develop the skills and knowledge of professional practice through group work.

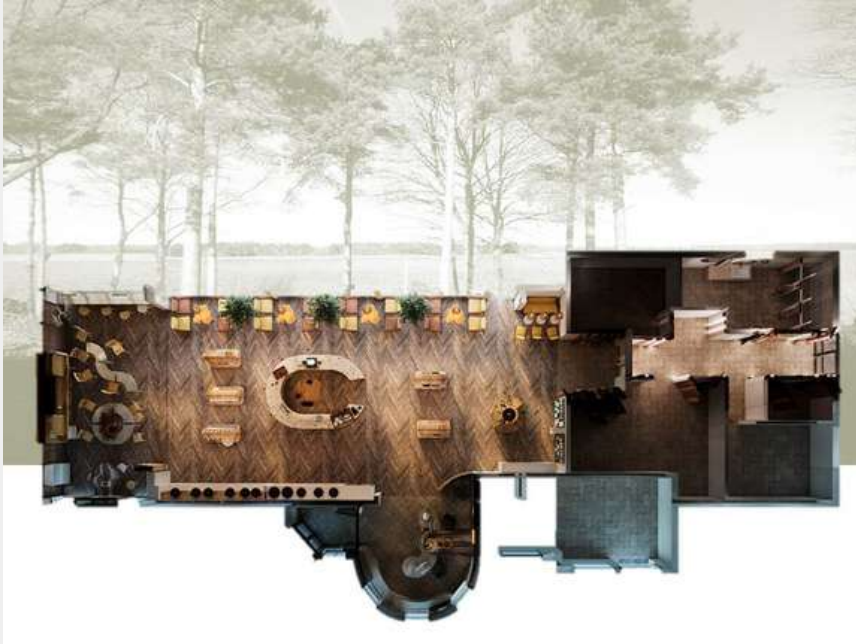
My role in the project was: part of the research for location, client, reception materials, development of reception area and the entrance, plan and elevation for the mentioned zones; all zones 3D visuals.

Participation in all group discussions, input for the moodboard, concept development, abstract models, anthropometrics, ergonomics, building regulations, site detailed analysis, panoramic presentation video of the whole space.









SKILLS:  
Research  
Moodboard  
AutoCad  
3D Renders  
Team work

# 06. reception desk



## Reception Desk in a Business Center

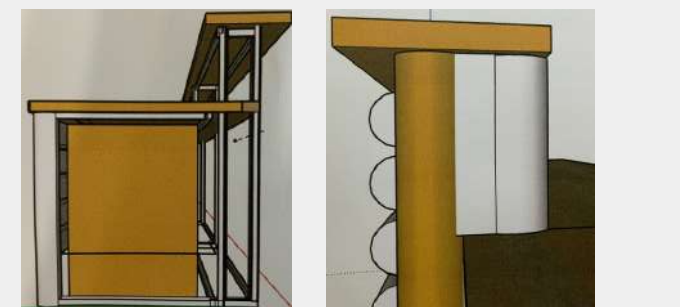
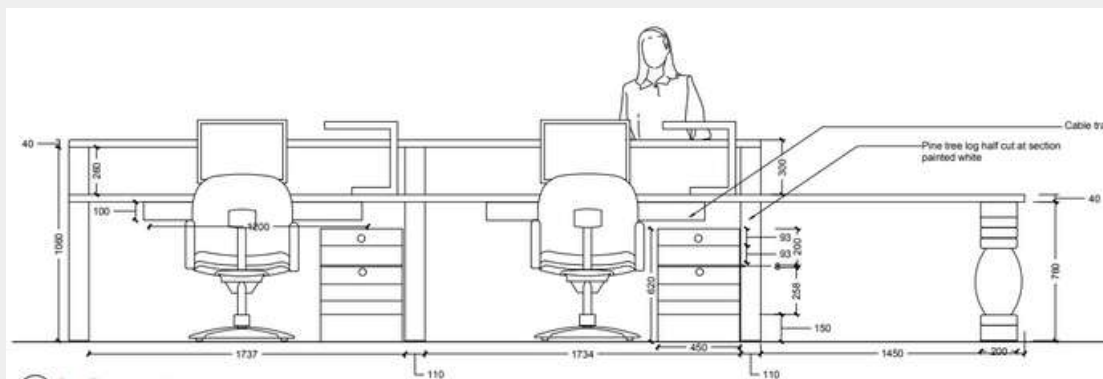
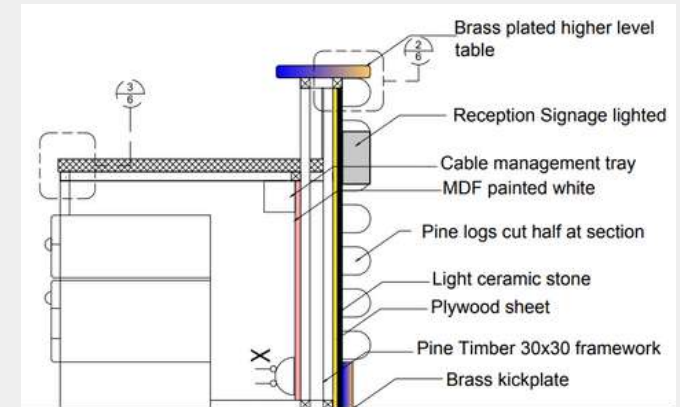
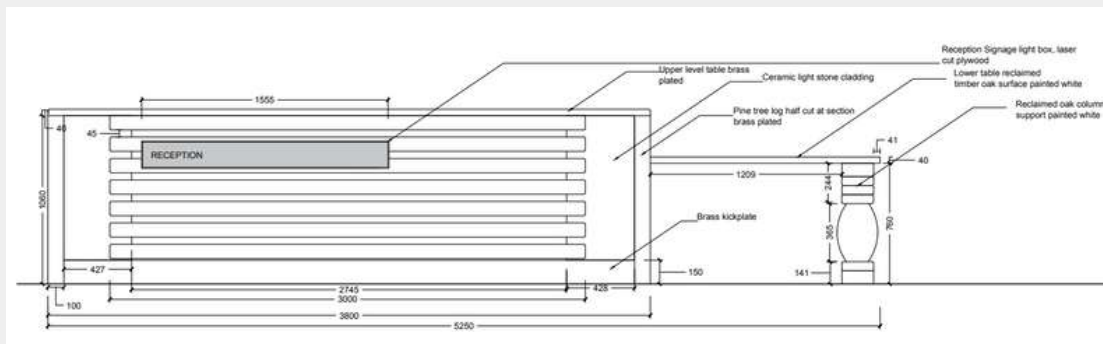
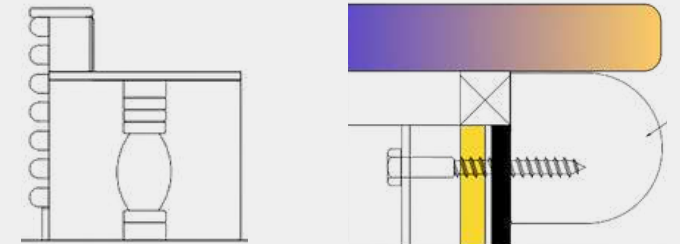
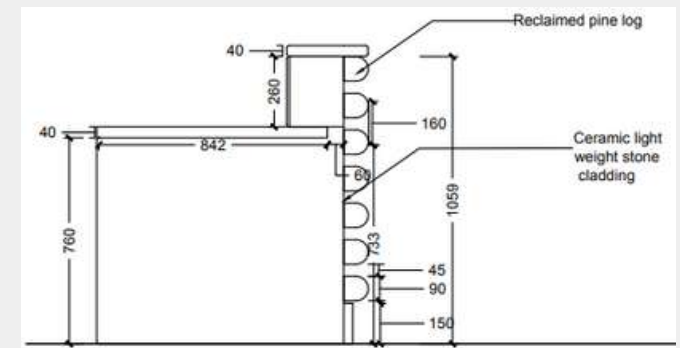
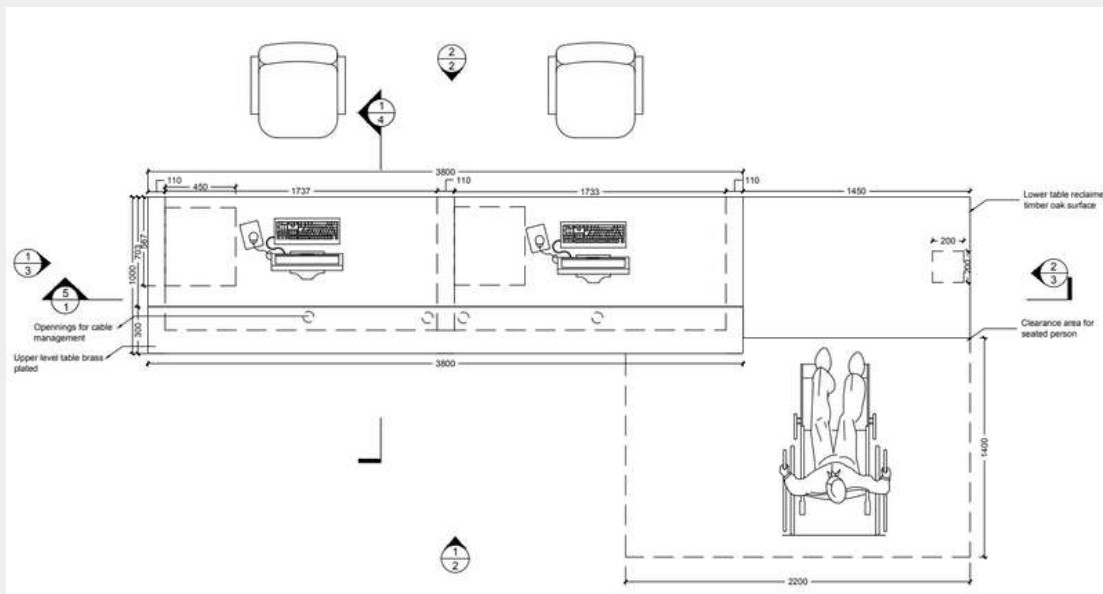
### Detailed Working Drawings. Reception Desk

The Brief is for developing my knowledge and understanding of researching materials and processes, focusing on their limitations and sustainability. The assignment is also to learn the process of creating a tender detailed working drawing package, which communicates each element of the design extensively and can be easily understood by a building professional / joiner / manufacturer to accurately build the design.



Materials are local: wood, pinewood timber, plywood, ceramic, brass details for plinth. fastening screws, water based glue.

YULIA KHRIPPENNIKOVA. KLC SCHOOL OF DESIGN. 2023. RECEPTION DESK



YULIA KHRIPPENNIKOVA. KLC SCHOOL OF DESIGN. 2023. RECEPTION DESK



SKILLS:  
Research  
Concept developing  
Sketching  
Modelling  
SketchUp  
AutoCad  
3D Render  
Presentation board



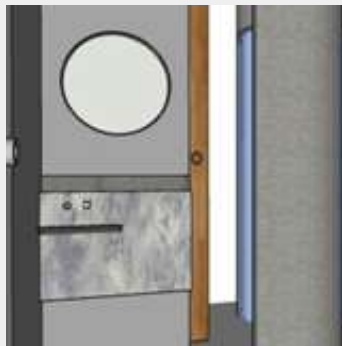
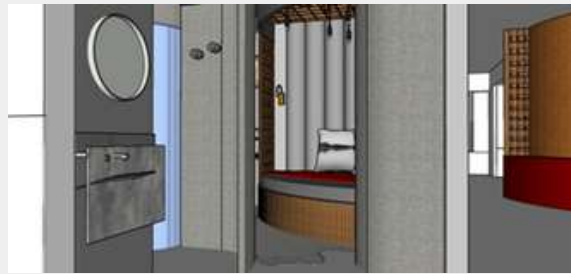
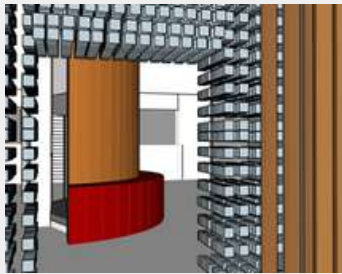
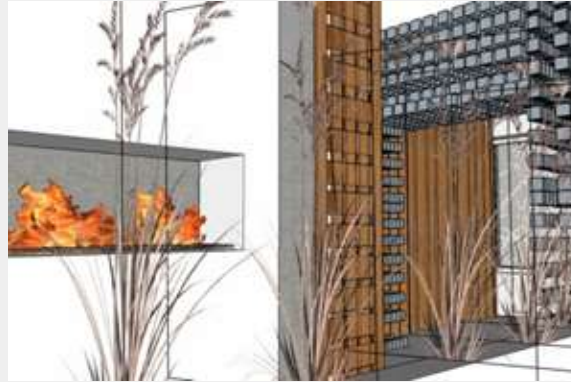
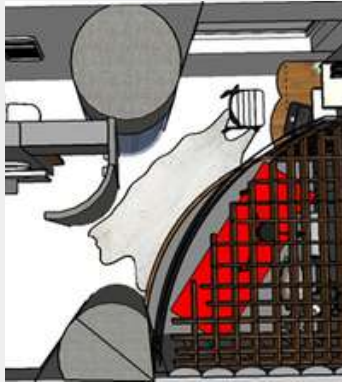
## Artistic Retreat

The Brief was to devise an innovative solution for the shared accommodation of a new retreat to be situated in the countryside or a parkland at my choice for function and location. It should be located in a large outdoor area, like a park, countryside, or woodland, that you can visit easily. This project aim is to examine my awareness of research, manipulation of space, evaluation of complex solutions, understanding of regulations and synthesis of ideas. The space is to be used for sleeping quarters and a shared area inspired by the function of the retreat. It is estimated that visitors will spend up to a couple of weeks at the retreat.

## The Way to the Source

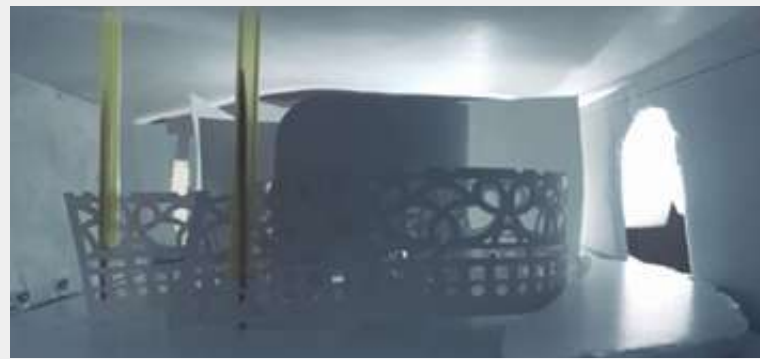
The Church as a focal point of the location and its geometry with indoor sense of light and continuity became inspiration for the design. Its pyramid shape with a circle in the center ascending up and symbolizes the way from materiality to spiritual growth. It also symbolizes the Sun and space, the unity of man and the environment. The artistic theme of the REtreat for painting en plain air should bring more energy, better mood, positive changes in life.



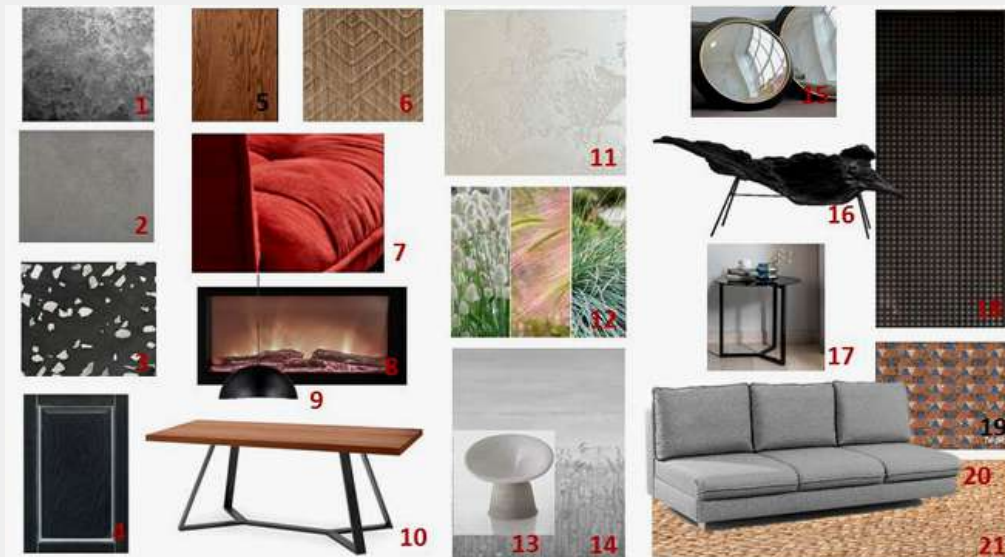


The dominant forms in the space are rounded as the circle is the shape of a yurt, repeating the form of the Sun, the symbol of connection with the Universe, life continuity. Round shapes also connect to the painting art retreat theme as a drawing an ideal circle by hand has been considered the top professionalism for painters. Rectangular forms vary with a scale (from large architectural forms of functional zones to the small finishing and furniture details - shutters, partitions, terrazzo tiling, fireplace, canopy grid above the bed, washbasin) which add interest to the minimalist interior.

Furniture is bespoke, ready-made with an option of customization. Artificial light layers create drama, calmness, and mysterious shadows repeating the location nature. Functional lighting is for reading, dining table, washing and dressing.



YULIA KHRIPPENNIKOVA. KLC SCHOOL OF DESIGN. 2023. RESIDENTIAL



Colors are connected to the local tradition and meaning: white (sun, air, purity), red (sun, live, power), grey (secrecy, the ability to merge with the world).

Materials: brutal rough surfaces of the walls textures, metal sinl, glass shower cabin are mixed with soft velvet upholstery of sofas, beds, wardrobe.

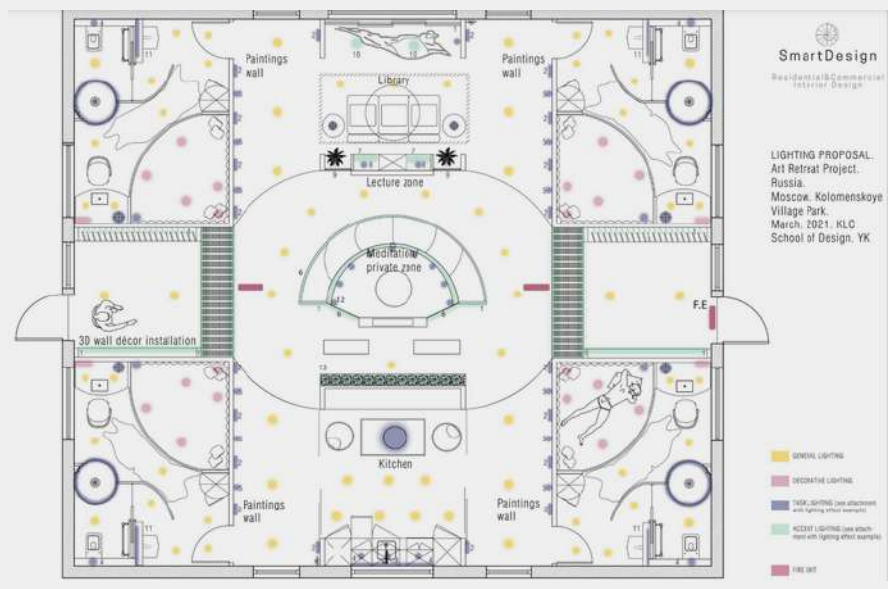
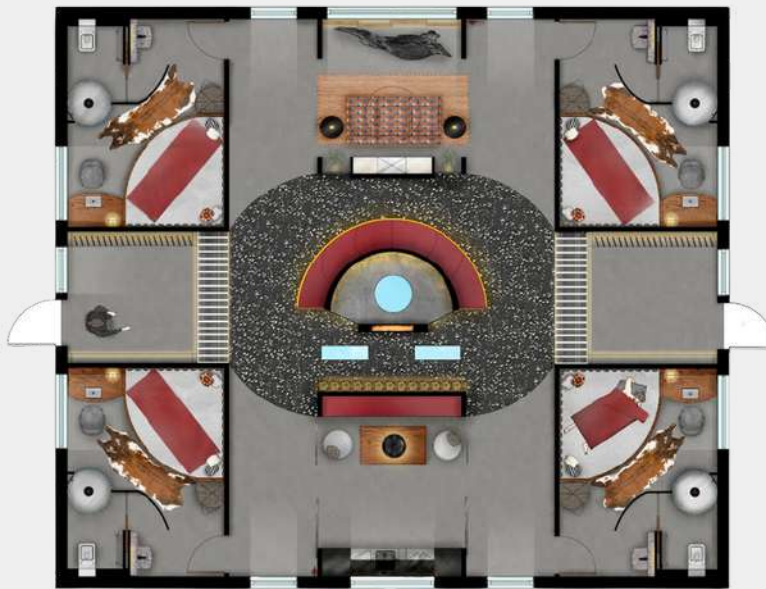
Walls: Decorative plaster

Floor: microcement, terazzo tiles

MDF details for bed, partitions, kitchen facades

Fabrics: velvet, jacquard





SKILLS:  
Research  
Moodboard  
Finishing Board  
Abstract modelling  
Space layout  
Photoshop  
SketchUp  
AutoCad  
Lighting Scheme

# 08. contact

---

YULIA KHRIPENNIKOVA. KLC SCHOOL OF DESIGN.  
2023

E-mail	<a href="mailto:unicons.phr@gmail.com">unicons.phr@gmail.com</a>
Website	in progress
Phone	+7 919 104 90 14
Address	Russia, Moscow, Proletarskiy prospekt, build. 3, apprt. 84 115522

