

CREATIVE
PORTFOLIO



MARY AWARITEFE - GARDEN DESIGNER

2023

ABOUT ME

Mary Awaritefe

Garden designer



Mary Awaritefe, is a versatile professional who holds a diploma in Computer Engineering and a bachelor's degree in Forestry and Wildlife, and most recently Graduated as a Garden Designer from KLC School of Design. Mary embodies a unique blend of technology, ecology, and artistic expression.

Through thoughtful design, Mary creates spaces that captivate aesthetically and contribute to individual well-being. Her story unfolds as a narrative of passion, growth, and a commitment to harmonising urban life with nature. Mary's strong interpersonal and communication skills are one place where her artistic qualities find expression and this makes for excellent client engagements and interactions.

Mary has also enriched her experience by having the honour of volunteering at Hampton Court during the summer.

CONTENT

HISTORIC GARDEN

4



COMMERCIAL GARDEN

8



RESIDENTIAL GARDEN

11



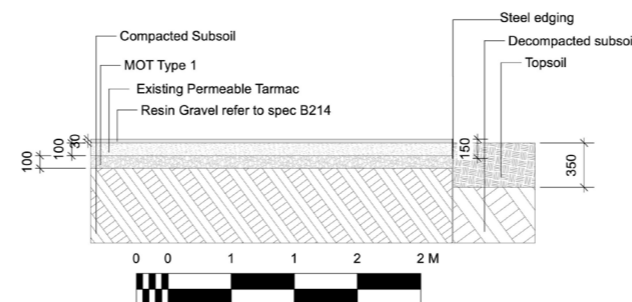
SHOW GARDEN

13



APPENDIX

15



HISTORIC GARDEN

Forecourt Night

Visual with Vectorworks, Sketchup and Enscape



Explore the Isokon Forecourt, a serene urban oasis where inviting seating, strategic shade trees, vibrant shrubs, L-shaped hedging, a calming water feature, and pleasant lighting converge. Meticulously designed for comfort and community, this haven within the city transforms urban chaos into a tranquil sanctuary, enhancing resident well-being and satisfaction.

HISTORIC GARDEN

Rooftop Visuals

Day and Night Views



Isokon Rooftop Daytime

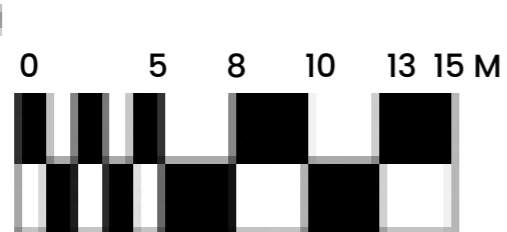
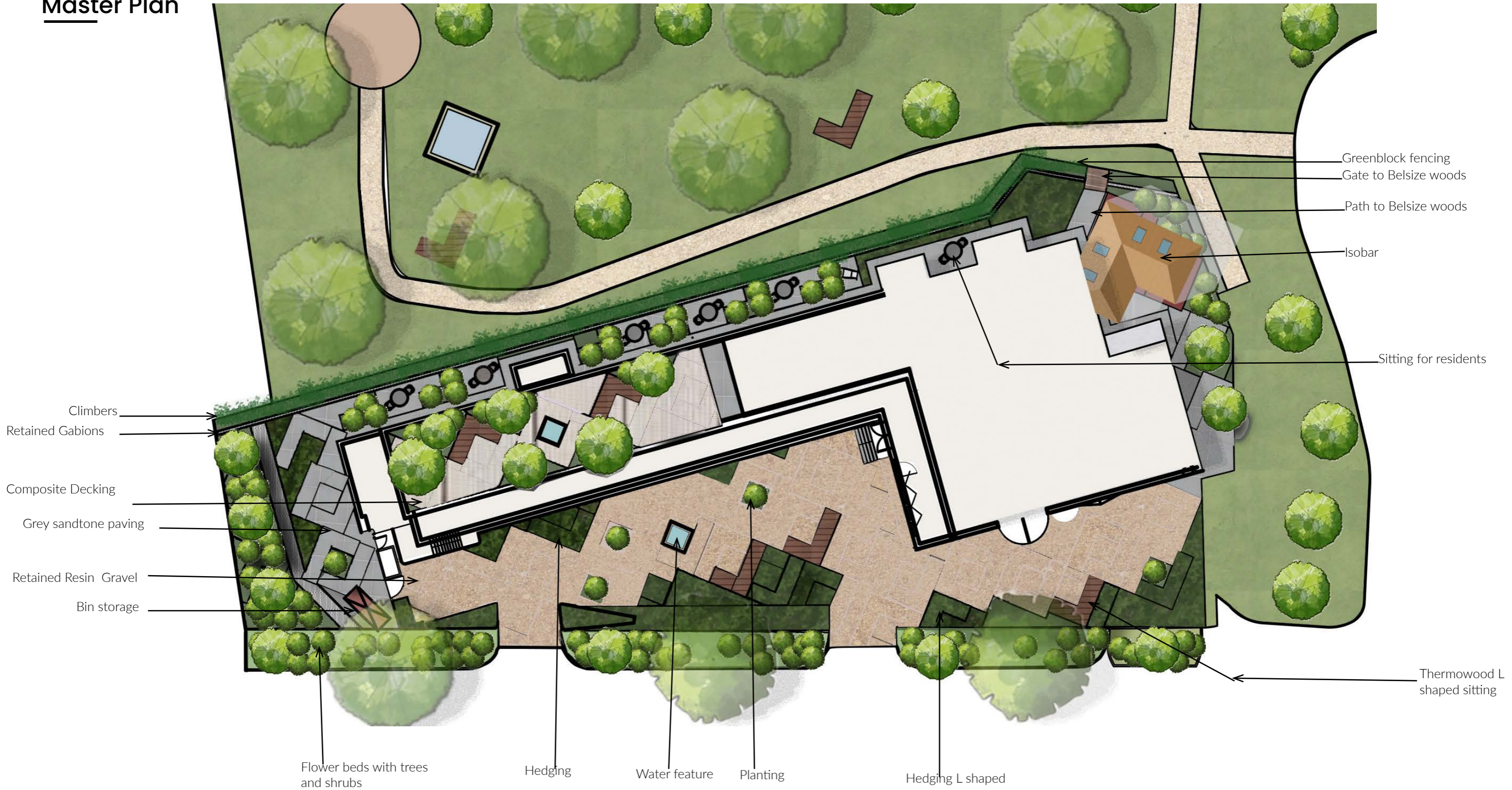


Isokon Rooftop Night time

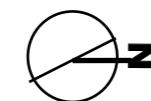
Embark on a journey through the enchanting realm of the Roof Garden, a magical escape soaring above the urban hustle. As you traverse this elevated haven, a symphony of delights unfolds. A mesmerizing water feature glistens, its gentle melody harmonizing with the wind's whispers. Stoic trees, resilient against the whims of the breeze, stand as guardians, their branches a dance in the air. The composite decking flooring, a tactile pleasure underfoot, invites you to linger. As day transitions to night, the garden transforms under the spell of pleasant lighting, casting a warm glow upon this ethereal sanctuary—an invitation to dream among the stars.

HISTORIC GARDEN

Master Plan

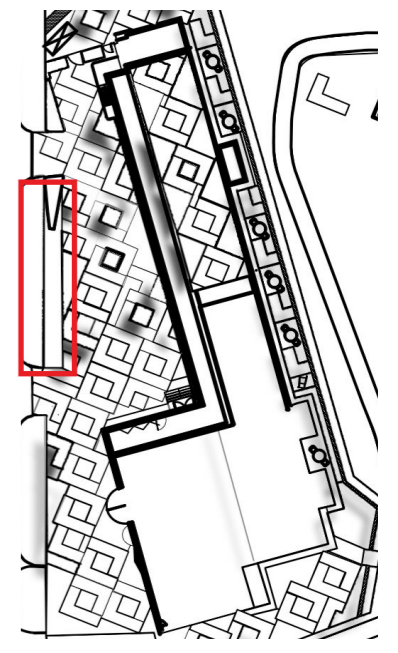
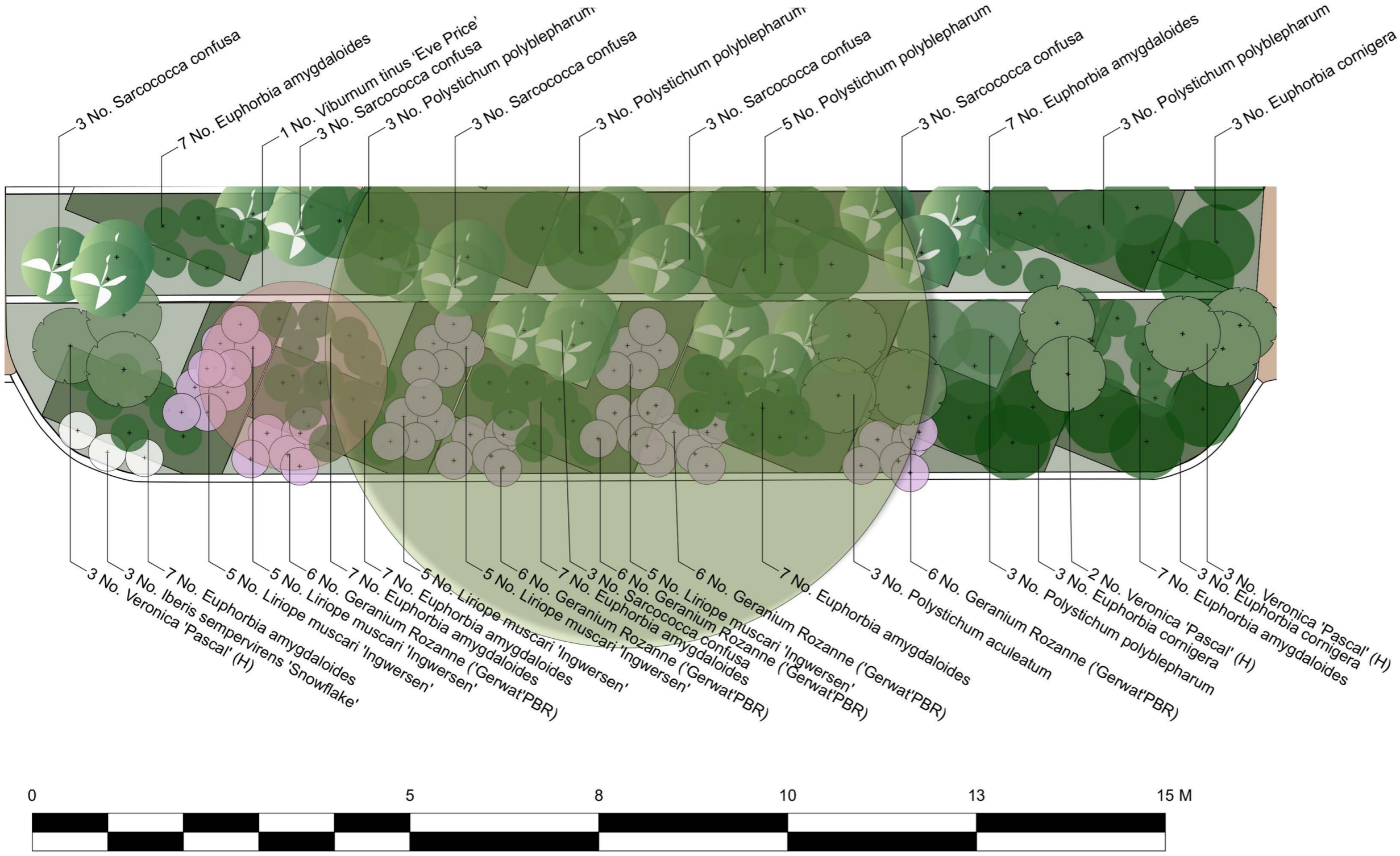


1 Master Plan



HISTORIC GARDEN

Planting Plan



1 Planting Plan Flower bed B



COMMERCIAL GARDEN

Courtyard

Visual with Vectorworks, Sketchup and Enscape



The Priory School Courtyard, a serene haven tailored for teacher tranquility, invites relaxation and collaboration. Purposefully designed for unwinding and recharging, this outdoor space envelops educators in a peaceful environment. It serves as a retreat where teachers can find reprieve, fostering a calm atmosphere conducive to both personal rejuvenation and collaborative engagement with colleagues.

COMMERCIAL GARDEN

Sensory garden and Swale Visuals

Day Views



Priory School Swale



Priory School Sensory Garden

Embark on a whimsical journey through The Priory School's enchanted Sensory Garden in Lewes! A symphony of wind chimes beckons, captivating young hearts with its melody. Follow the aromatic trail, where wildlife dances among fragrant blooms and a cozy birdhouse hums with life. Wander through textured wonders and behold the kaleidoscope of blooming flora. Finally, at the garden's end, discover a bubbling water feature—a magical haven where every sense blossoms!

COMMERCIAL GARDEN

Master Plan



RESIDENTIAL GARDEN

Back Garden

Visual with Vectorworks, Sketchup and Enscape



In the herbal haven of your backyard, aromatic treasures await. Rosemary, thyme, lavender, and bay unite in a fragrant dance, ensuring a sensory symphony that lasts through the seasons. A dedicated sitting area invites you to unwind, surrounded by nature's scented embrace. Touch the herbs, releasing pleasant aromas, while cool colors serenade your senses, offering a calming respite after a long day. An aromatic sanctuary where tranquility and nature converge.

RESIDENTIAL GARDEN

Back garden Visuals

Night Views



A charming oasis where your heart feasts as much as your guests. Picture this: a cozy dining nook for delightful sips and bites, seating 8-10 people in a garden with ambient lighting to uplift the space. Add a dash of childhood joy with a play area, a pinch of herbal magic in a dedicated garden plot, and voila—a living wall that breathes life into your haven! Let the garden symphony begin!

SHOW GARDEN

Mood/Concept Board



SHOW GARDEN

RHS Global Impact

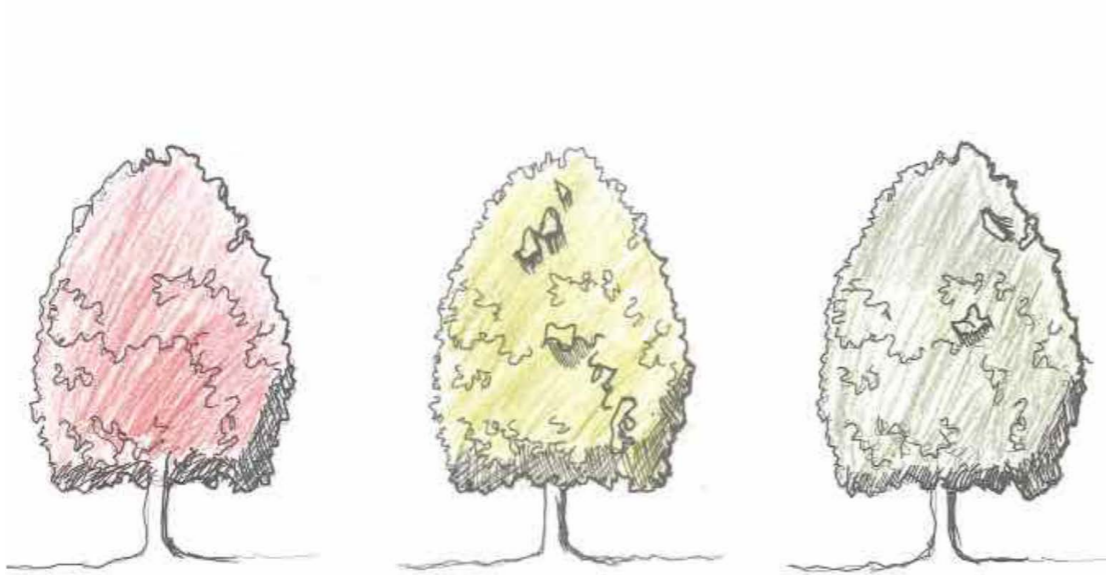
Visual with Vectorworks, Sketchup and Enscape



The call of mother nature to human nature is a global impact show garden that invites visitors to reconnect with the natural world and embrace sustainable living. Through a thought-provoking design and curated plant selection, the garden highlights the urgency of addressing environmental challenges such as climate change, biodiversity loss and habitat destruction. The garden aims to inspire visitors to take action in their own lives and be mindful of their impact on the planet.

HAND DRAWING

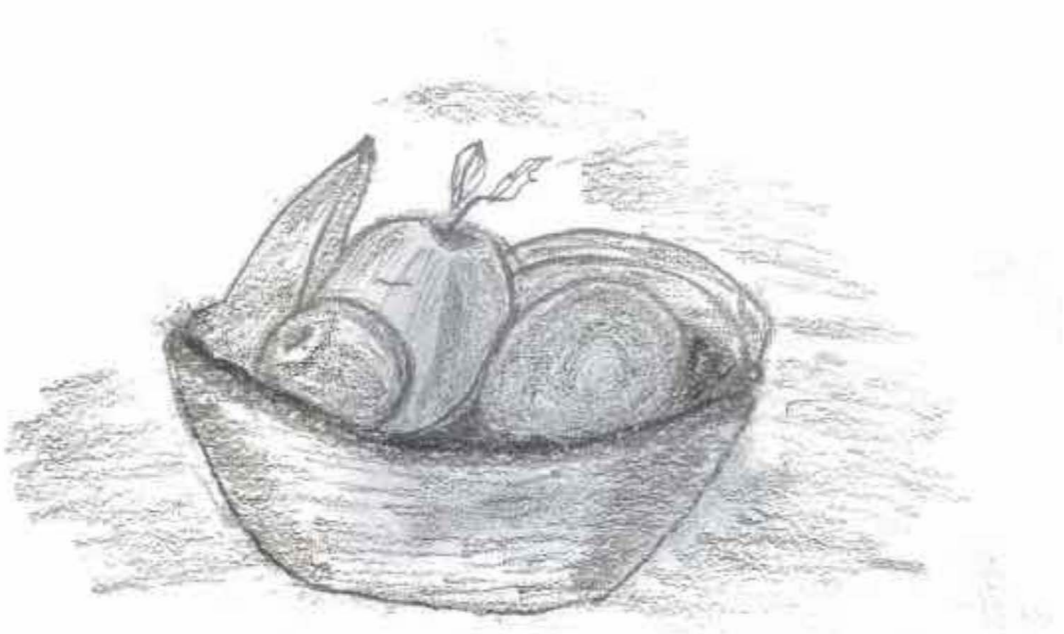
Free Sketches



Tree showing seasonality



Sunken Garden at Hampton Court



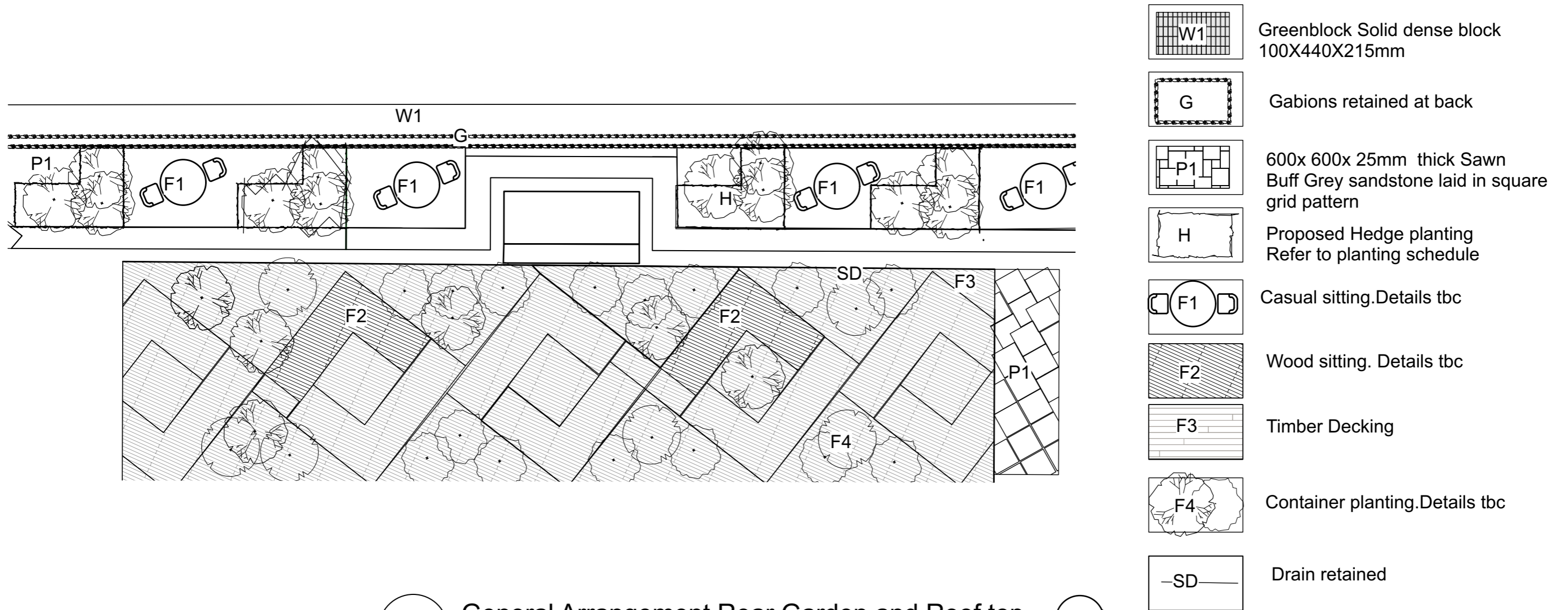
Fruit bowl showing shadow



Potted plant

APPENDIX

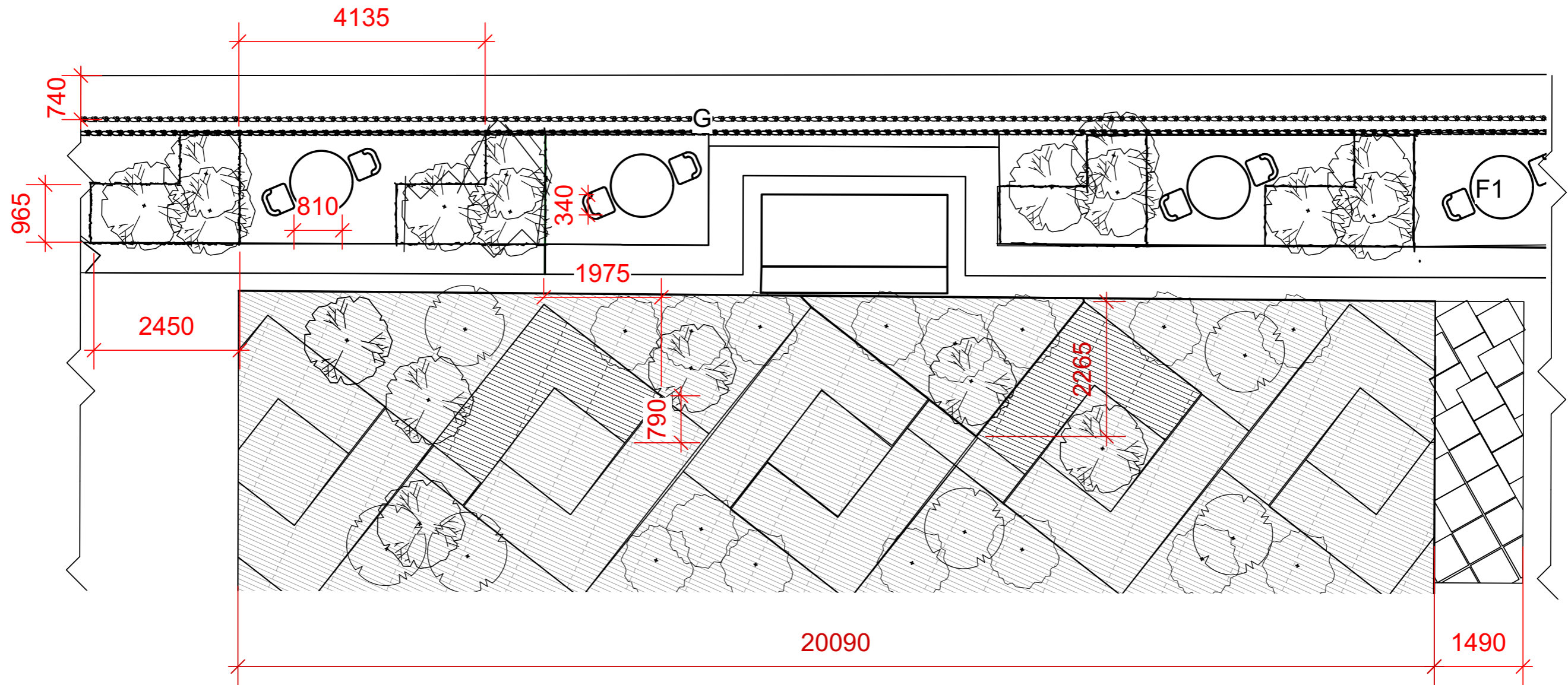
General Arrangement Plan



1 General Arrangement Rear Garden and Roof top

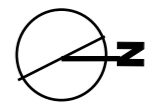
APPENDIX

Setting Out Plan



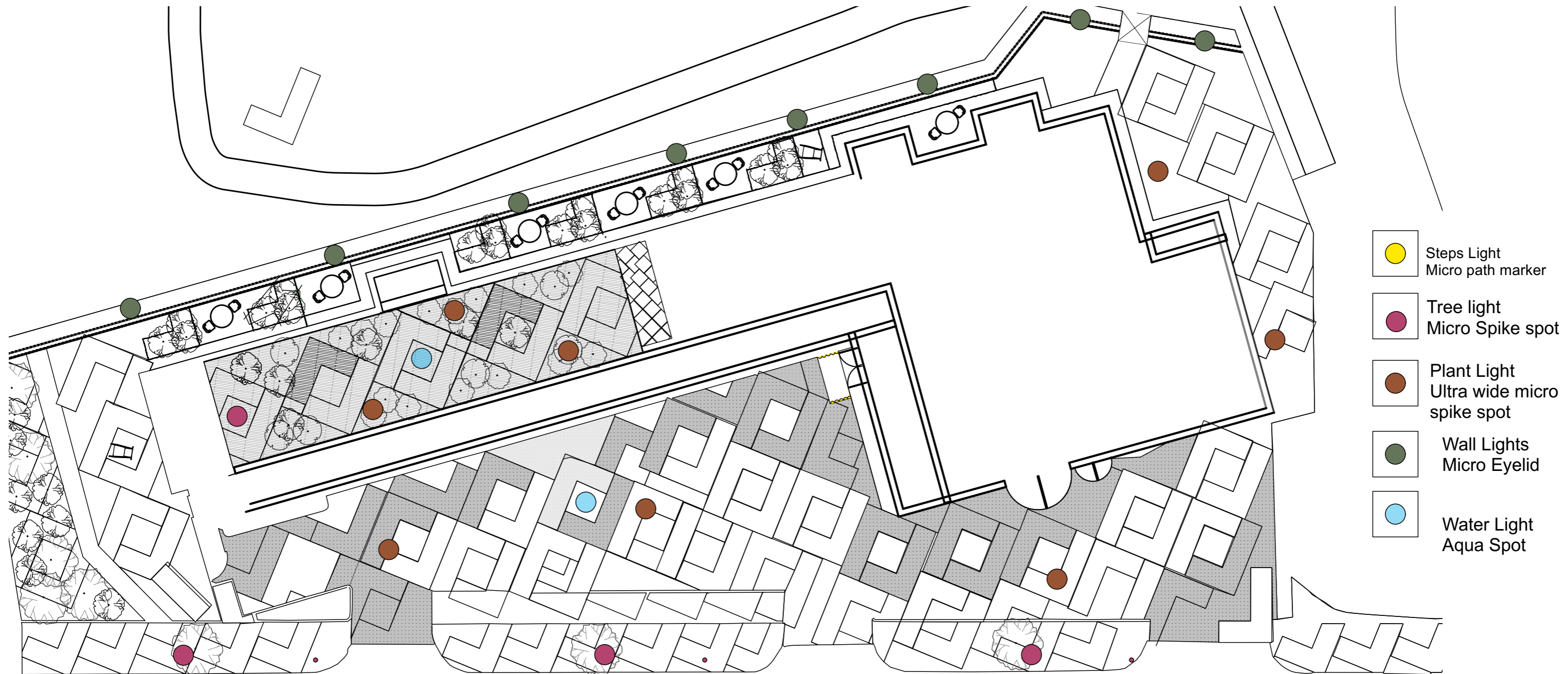
1

Setting out Rear Garden and Roof top

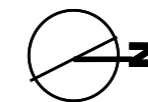


APPENDIX

Lighting Plan



1 Lighting Plan



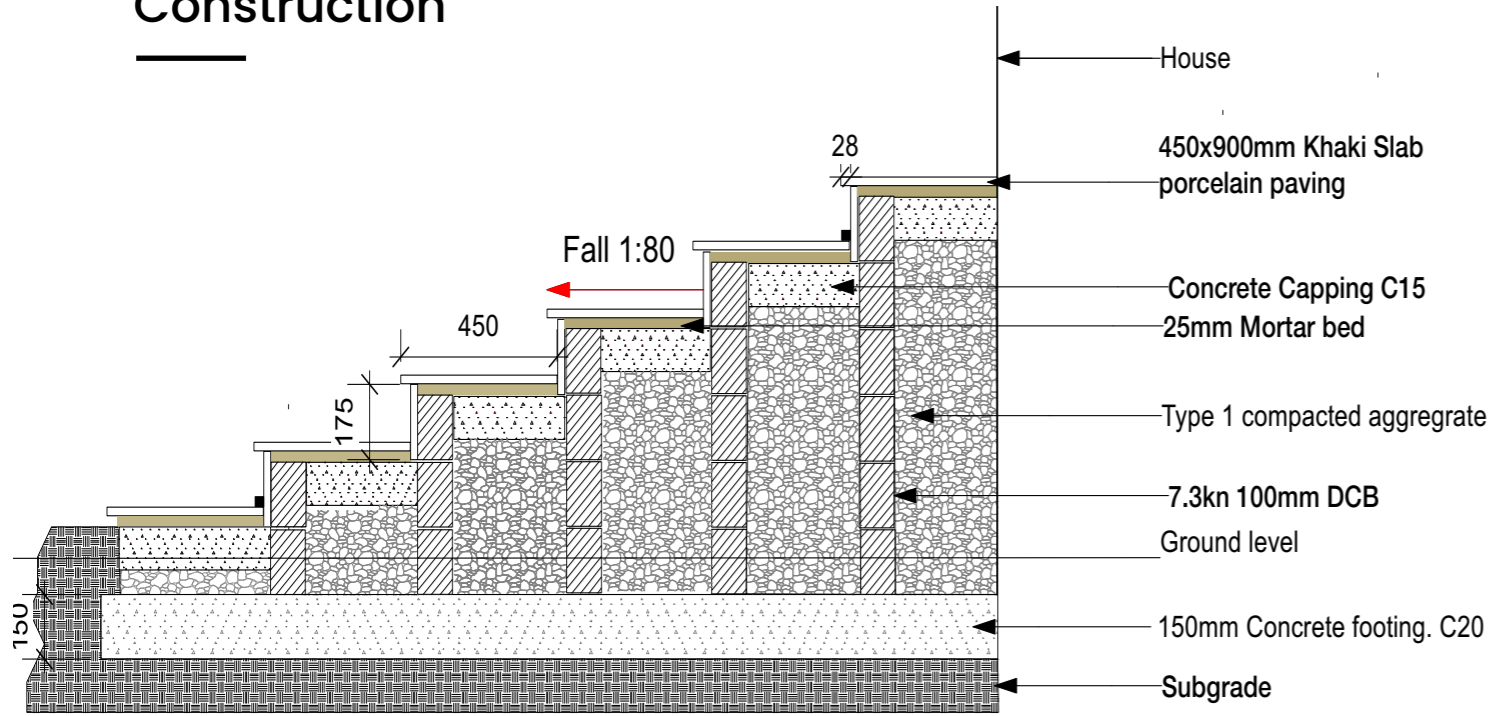
APPENDIX

Planting Schedule

PLANT SCHEDULE FLOWER BED				
CATEGORY	LATIN NAME	GIRTH	FORM	QUANTITY
TREES	Crataegus × lavalleyi 'Carrierei'	12-14cm	Round/spherical, dark, dense crown	1
SHRUBS	Sarcococca Confusa			18
				1
	Veronica 'Pascal'			11
PERENNIALS	Polystichum polyblepharum			17
	Polystichum aculeatum			3
	Euphorbia amygdaloides			56
	Euphorbia cornigea			9
	Liriope muscari 'Ingwersen'			25
	Geranium Rozanne('Gerwat' PBR)			30
	Iberis sempervirens'Snowflakes'			3
TOTAL				174

APPENDIX

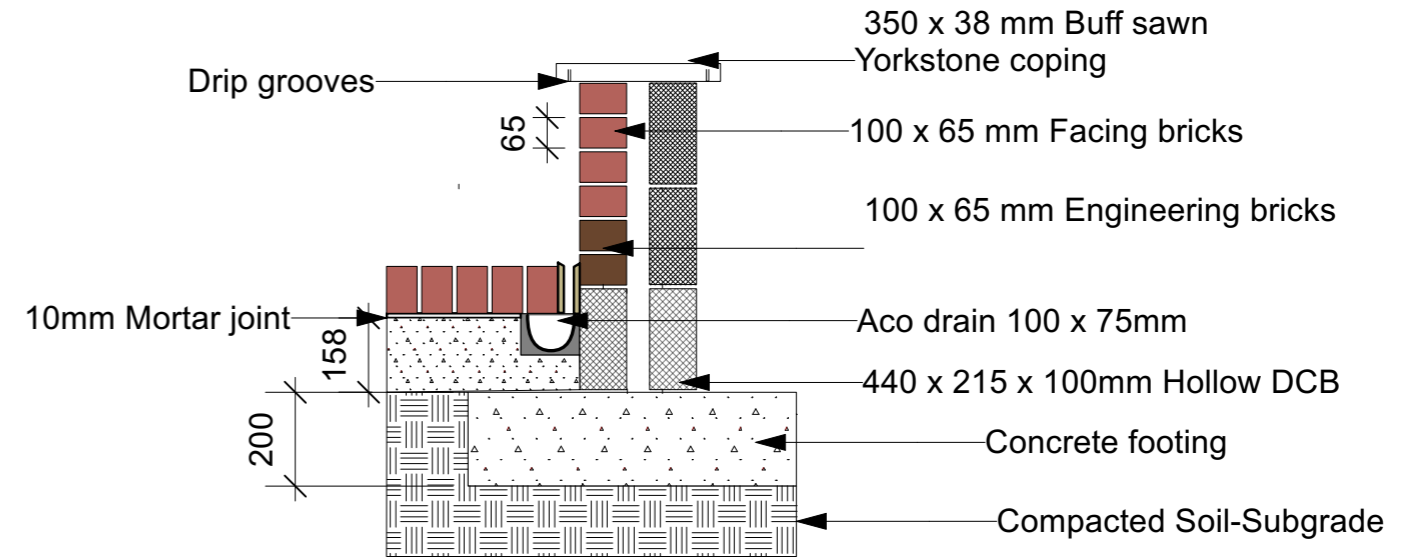
Construction



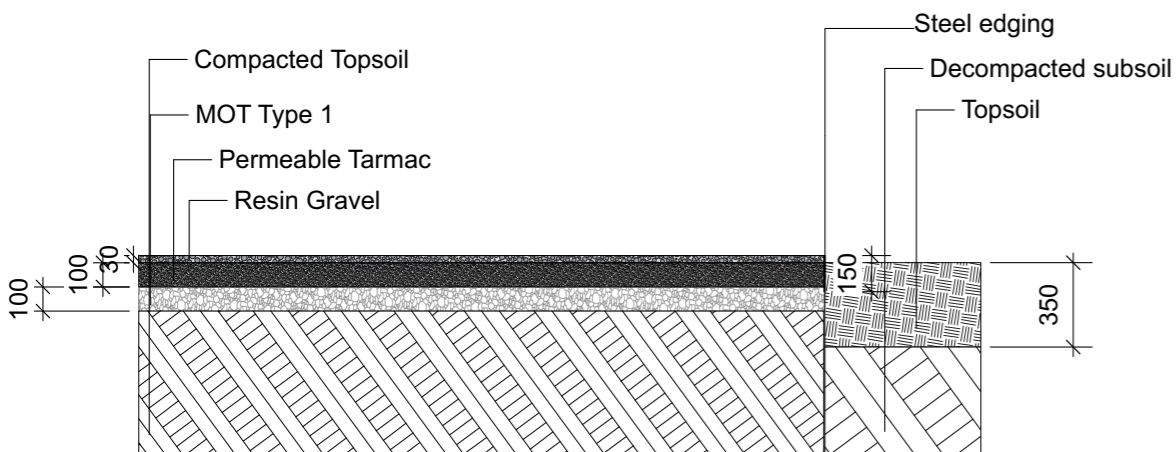
Slab Khaki Porcelain steps

Construction Notes

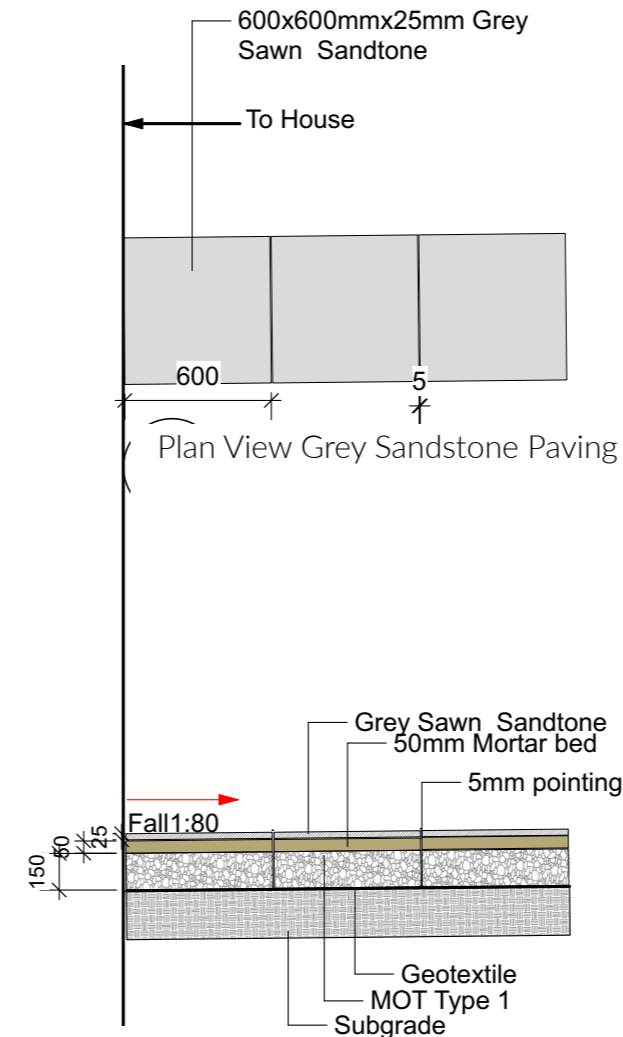
25mm Mortar Joint should be made with 5 parts Sharp sand and 1 part Cement
 Paving should be sealed with an SBR primer on site



Brick Wall with Aco drain



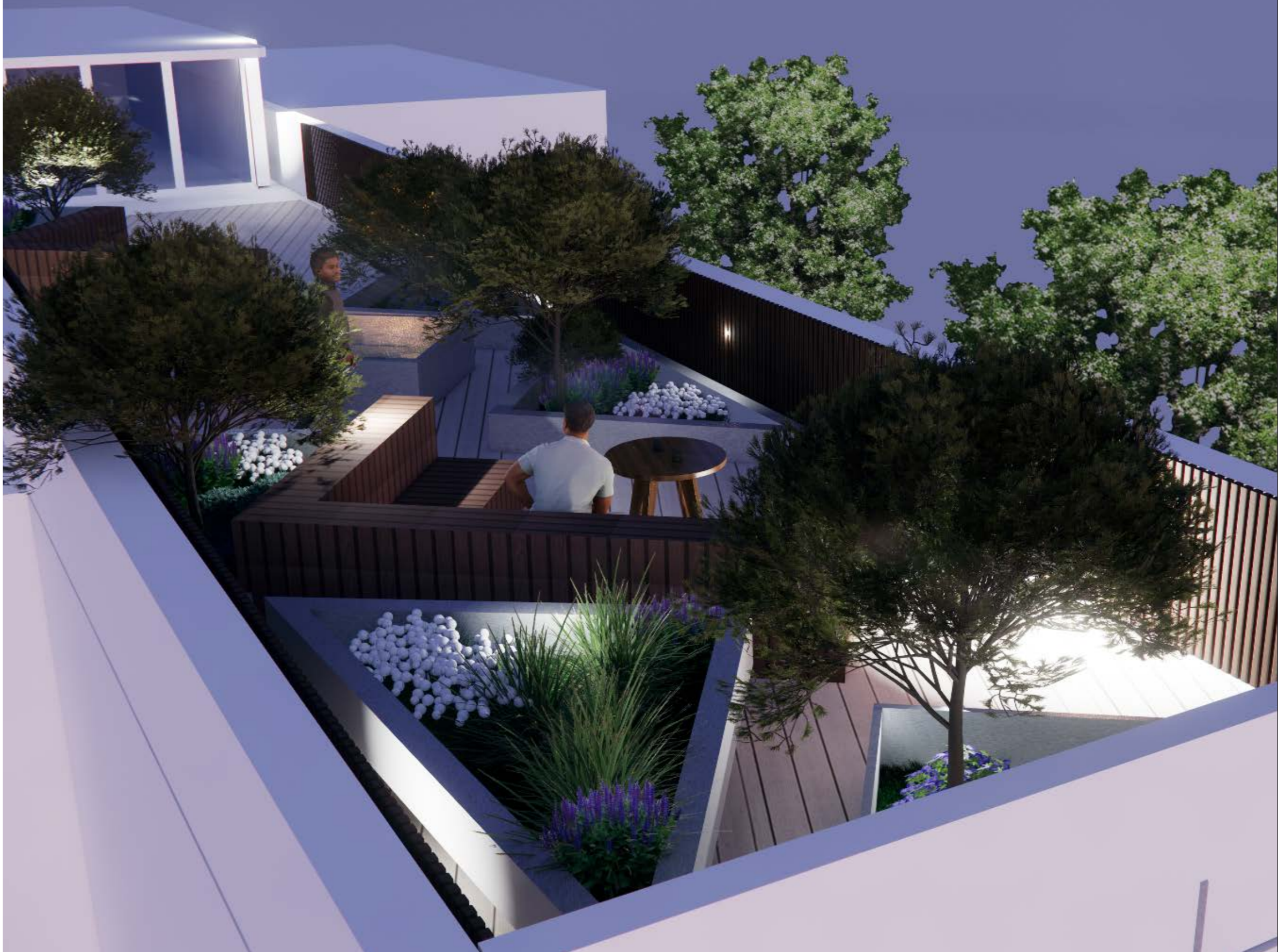
Section View Steel Edging



Section View Greysandstone paving

Construction Notes

Supplier: CED Stone
 Sovereign Grey Sawn Sandstone Paving sandblasted by the manufacturer
 SBR primer should be used on site
 Full bed of semi-wet mix 5:1 sharp sand: Cement mortar
 Paving would be laid in a square grid pattern
 Pointing would be made with Larsen GPM mortar



THANK YOU