



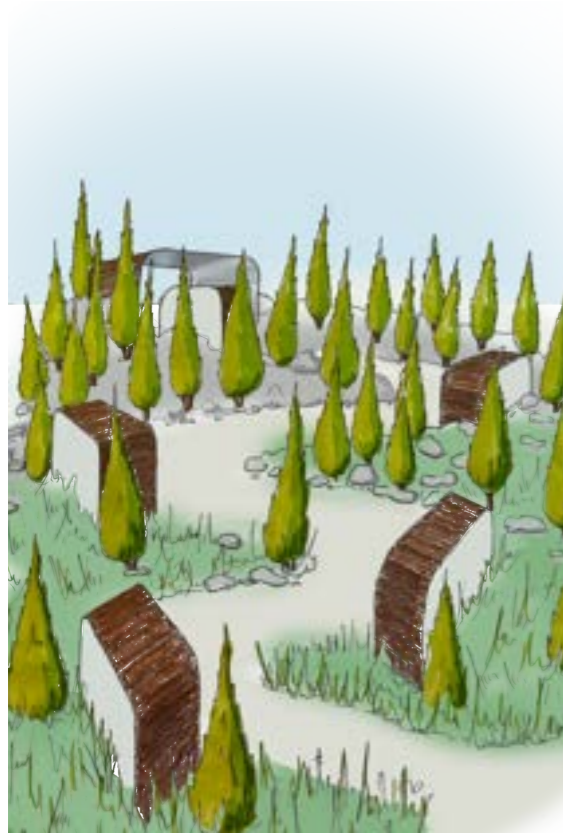
portfolio

**izzy carruthers.**

garden design  
2023



# contents.



**conceptual.**



**residential.**



**historic.**



**pocket park.**



**about me.**



# conceptual garden.

## echo chambers

Highlighting the online environments tendency towards echo chambers. Echo chambers limit exposure to diverse perspectives and have been known to increase social and political polarization and extremism.



### reflection

Of pre-existing views



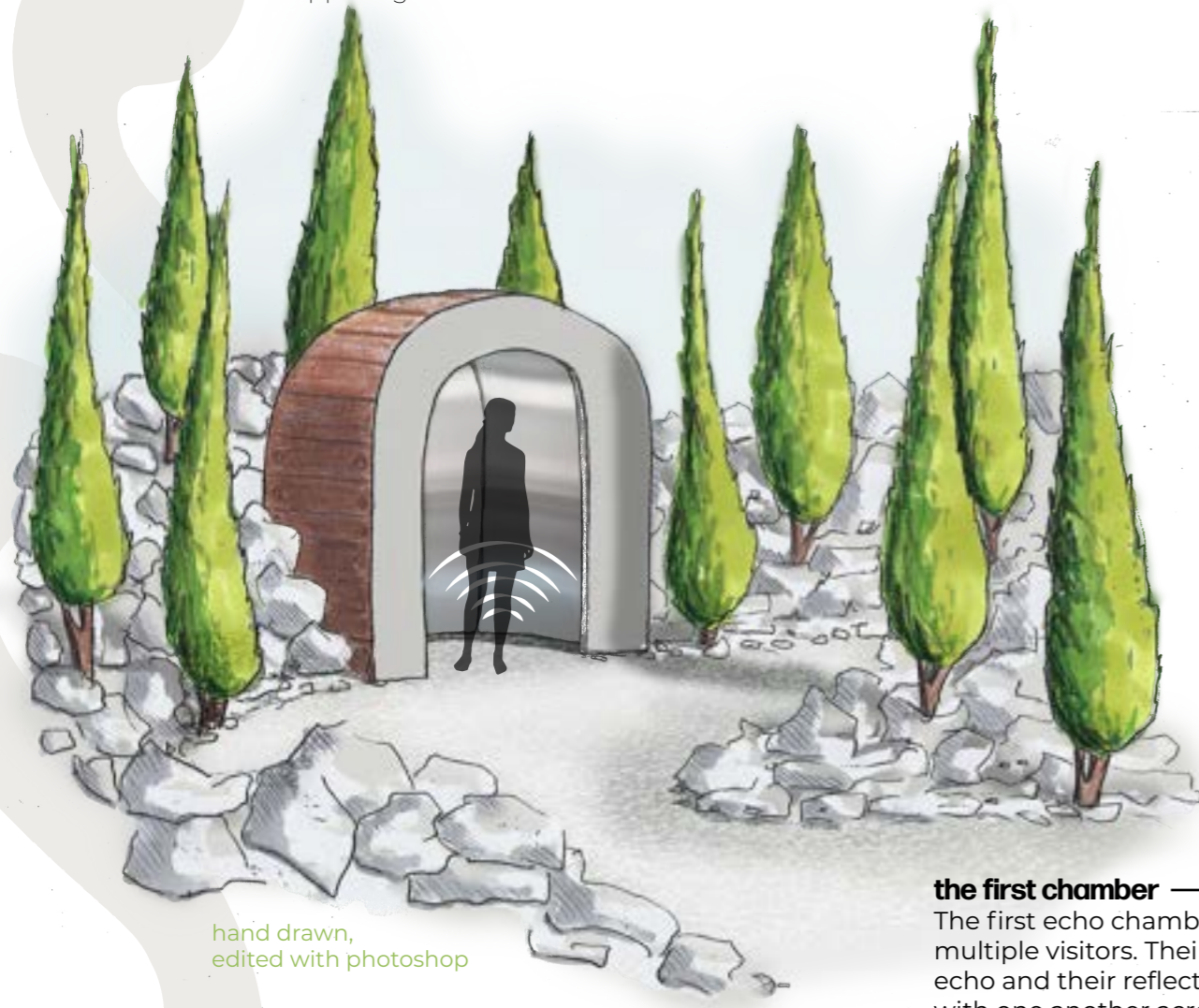
### narrowing

limited exposure to diverse perspectives & opposing views



### amplification

and reinforcement of an individuals beliefs



hand drawn, edited with photoshop

### expose your mind

Visitors exit through a narrow tunnel, the voices from each of the chambers can be heard mingling together. This symbolises breaking free of an echo chamber by being open to alternative voices and seeking out opposing views.

### diversity fades

The further in to the garden visitors venture the more the diversity in planting fades. All you are left with is the strong, dense repetition of Cupressus sempervirens.

### the first chamber

The first echo chamber can accommodate multiple visitors. Their voices mingle and echo and their reflections move out of time with one another across the walls. There is diversity in both the audible and visual landscape.



### a single perspective

With space for only one, only the voice and reflection of the individual are echoed back again and again. The illusion of many voices when there is only one being amplified and distorted.

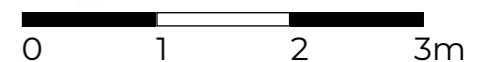
### losing sight

The paths view beyond the garden shrinks as banks of stone gradually tower over it.

### entrance

Visitors enter through a generous path surrounded by a diverse & open wild flower meadow.

MASTER PLAN



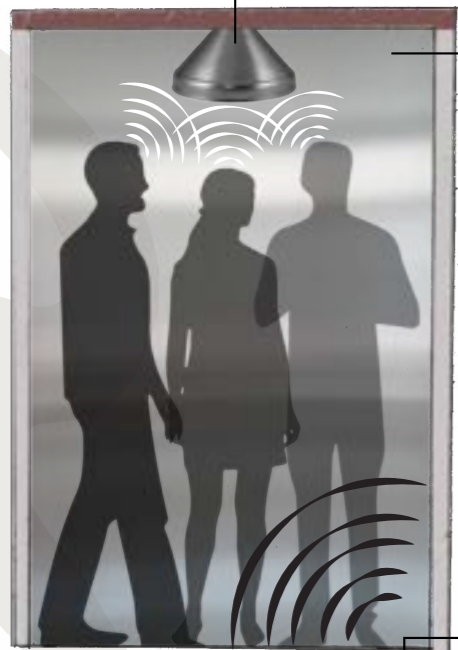
drawn to scale in vectorworks, hand rendered & edited in photoshop



# conceptual garden.

## echo chambers

**microphone**  
Captures sounds from within the chamber.

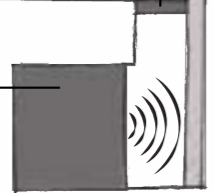


**mirrors**  
Line all the internal walls reflecting back the visitors inside.



**floor grate**  
Allows echoes from the speaker to reach the chamber.

**speaker**  
Distorts and plays echoes of the sounds from within the chamber.



### planting



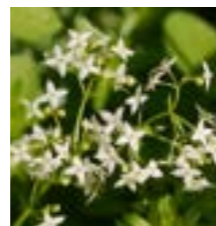
Cupressus sempervirens



Achillea millefolium



Centaurea scabiosa



Galium album



Plantago lanceolata



Echium vulgare

### materials



limestone gravel



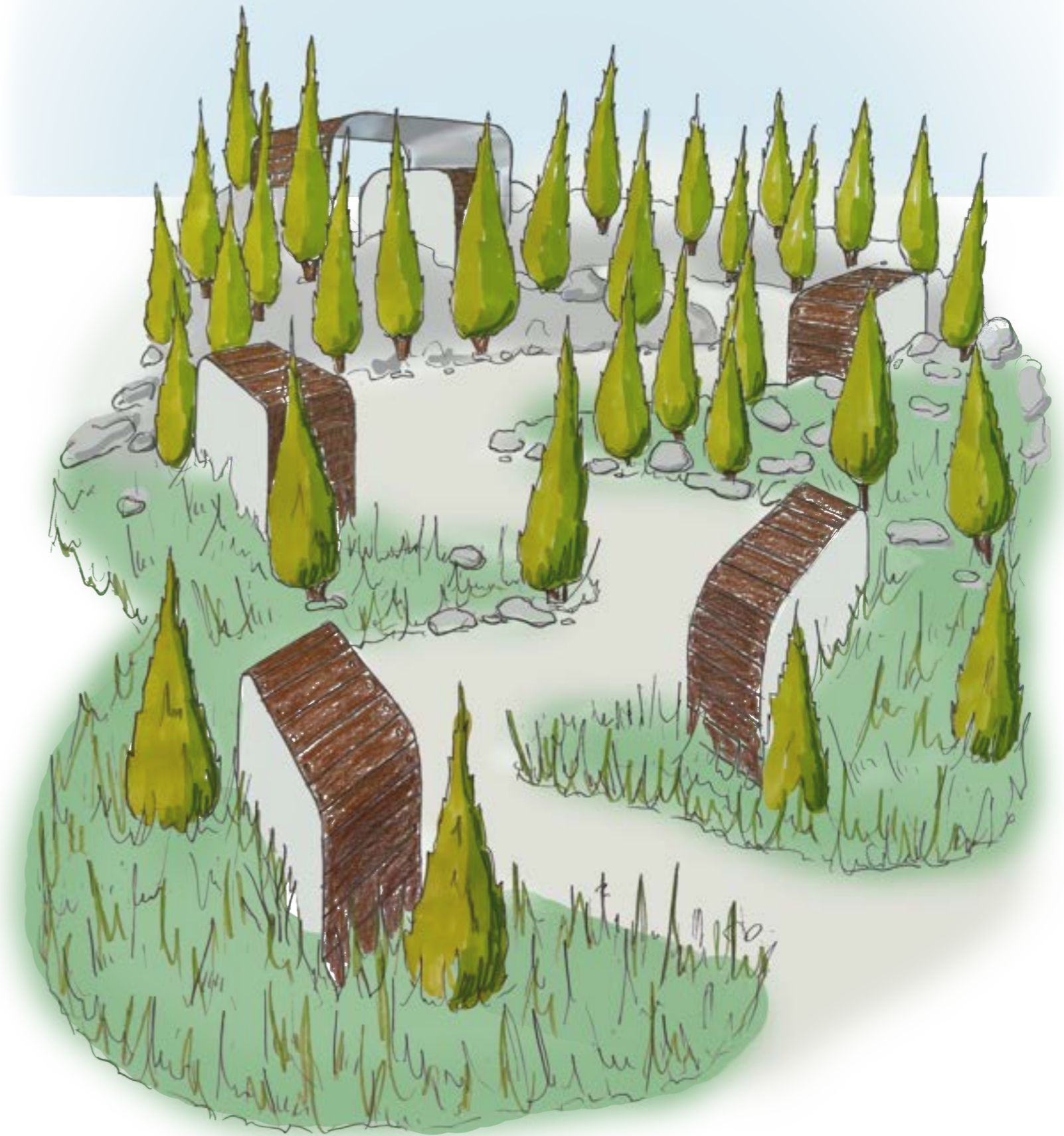
limestone rocks



cypress wood



flexible plastic mirror



hand drawn with pencils & markers, edited with photoshop



# residential.

## 6 o'clock and sunny

A peaceful oasis for a young family to enjoy long summer evenings together with friends. An outdoor dining area with built in kitchen allows for seamless hosting whilst a smaller terrace gets the morning sun for quiet time over a cup of coffee. The front garden was rearranged to move the vehicle gate away from the front door allowing for a new pedestrian gate. This creates more of an entrance to the property and encourages walking and bicycle usage.



- 1 Green Roof Shed    3 Outdoor Kitchen    5 Sunken Patio    7 Creeping Thyme Walkway    9 Green Roof Bin Store    11 New Pedestrian Gate
- 2 Outdoor Dining    4 Casual seating    6 Jasmine Arch    8 Wisteria Wall    10 Green Roof Bike Shed    12 New Vehicle Gate



### Sunny Bed Plants



### Bulbs

### Herb Bed



### Shady Bed Plants





# residential.

6 o'clock and sunny



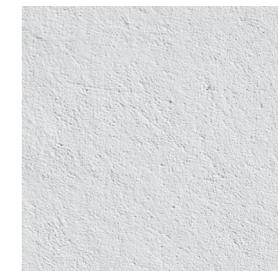
Elevation A to A



## Materials Palette



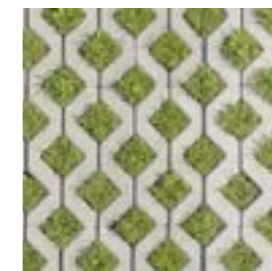
Powder Coated Steel



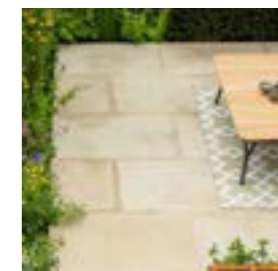
Exterior Rendered Wall



Tuscany Tumbled Clay Pavers



Concrete & Grass Pavers



Buff York stone Paving



Painted fence panels



# historic.

## the isokon flats - ground level concept

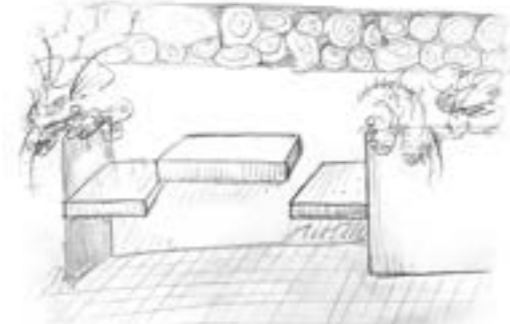
The isokon flats were the first modernist flats built in the UK. They were home to many famous writers, artists, architects and spy's. Today's residents wanted to bring the building back to life by re-designing the private rooftop garden and the grounds surrounding the building. They also wanted to reconnect the building to the neighbouring nature reserve, Bellsize Woods,



1 Outdoor Dining



2 Communal Kitchen



3 Seating Nooks



4 Seating Nooks



The site



### Materials Palette



Polished Concrete



Weathering Steel



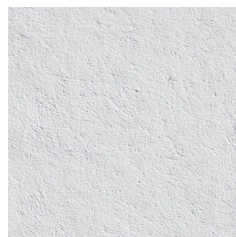
Powder Coated Steel



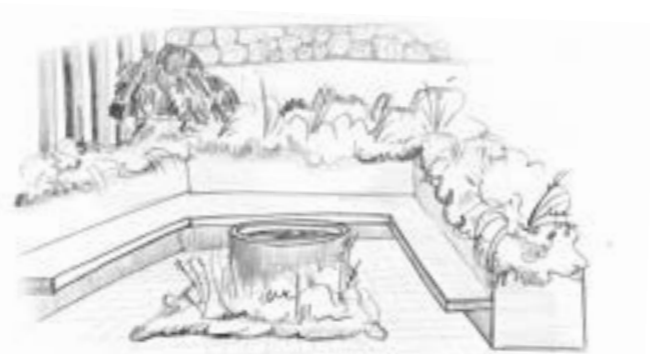
Galvanised Steel Walkway



Resin Bound Gravel



Exterior Rendered Wall



5 Council Ring Seating



6 Connecting Ponds



7 Art on Rotation



8 Museum Seating









# historic.

## the isokon flats - penthouse garden & bellsize woods



### 1 Grow your Own

Raised beds filled with fragrant herbs and fresh vegetables. Hyper local production to make the most of the rooftops sun to create food that can be shared.



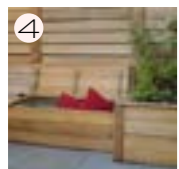
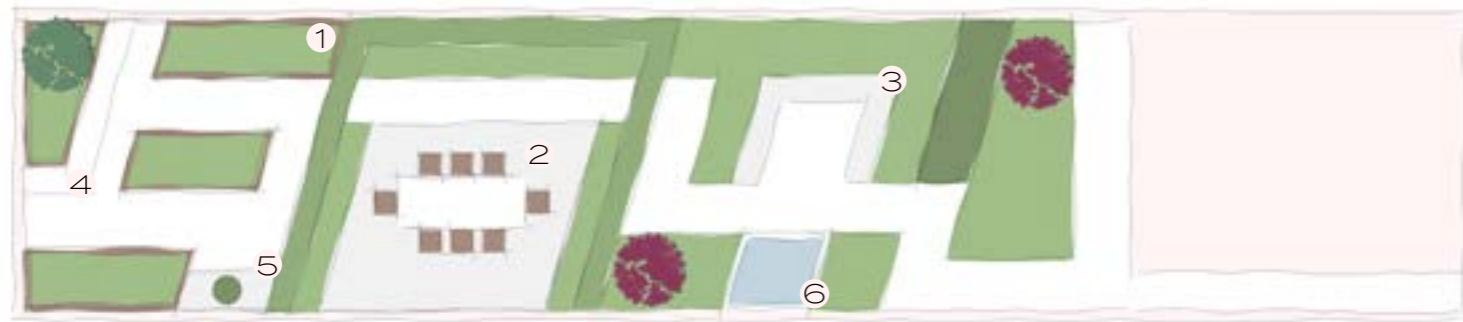
### 2 Feast with a View

A dining room between fragrant jasmine walls provides views across the city. In times of celebration the space can be converted in to a dance floor under the stars.



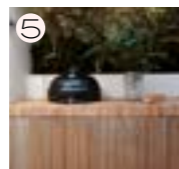
### 3 Take a Seat

A spacious bench for gatherings with evening drinks or to lean back and stretch out with a book in the breeze.



### 4 Storage Seating

Take a break from working in the garden on a bench that doubles as garden storage for tools and outdoor cushions for sofas & dining chairs.



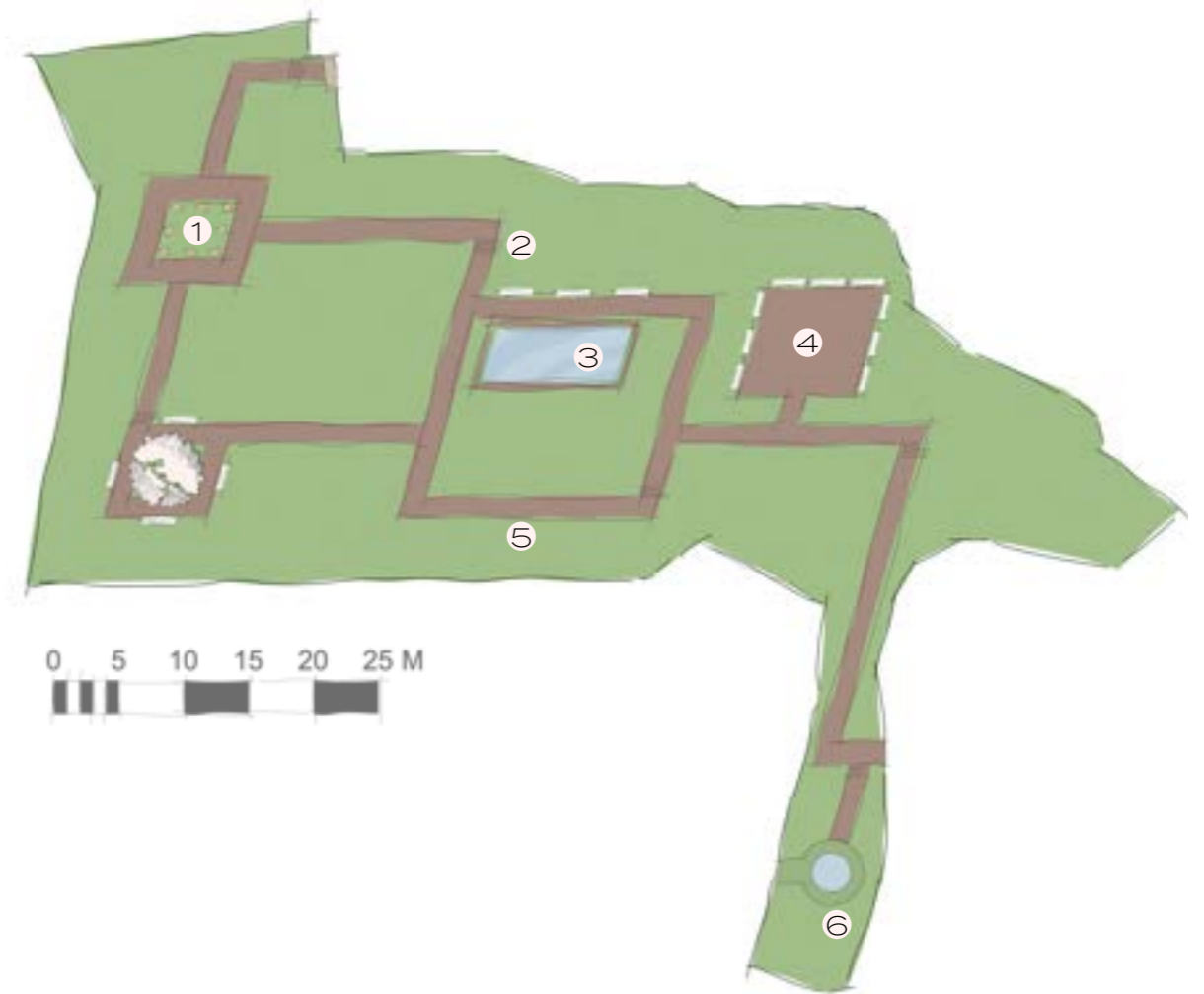
### 5 Penthouse Grill

Cook up all the fresh produce from the elevated garden and share with friends and family in the outdoor dining room.



### 6 Mirror the Sky

A reflective pond to bring sound and movement to the space and to reflect the setting sun as residents take in the evening.



### 1 Hedge Habitats

Sculptural dead hedges form a central island created from trees cut down from forest management & the development of the Isokon site. A habitat for insects & accessible to the school that uses the site for wildlife education.



### 2 Log steps

These will help visitors navigate the slope in Bellsie Woods especially when it is muddy underfoot. These too can be made with material cleared from the site.



### 3 Wildlife Pond

To replace the existing pond a wildlife friendly pond with gradual slanted sides for easy access. Marginal planting provides shelter from predators & it is set back from the path to minimise interference whilst still being visible for visitors.



### 4 Educational Space

An open clearing for group gatherings. Story telling, craft workshops, yoga or wilderness play. This area is flexible to suit the needs of both residents and visitors like the local school.



### 5 Paths & Edges

To help maintain the habitats of the wildlife living in Bellsie Woods low wooden fences will be erected. This will also help keep ground-cover plants protected from regular footfall.



### 6 Gather & Reflect

A space to pause and reflect on entering and leaving the woods. Marking a transition from an urban to a natural space.



# planting.

## isokon - shady bed



Sarcococca confusa



Clematis chiisansensis Amber



Pachysandra terminalis 'Green Sheen'



Hakonechloa macra



Polystichum munitum



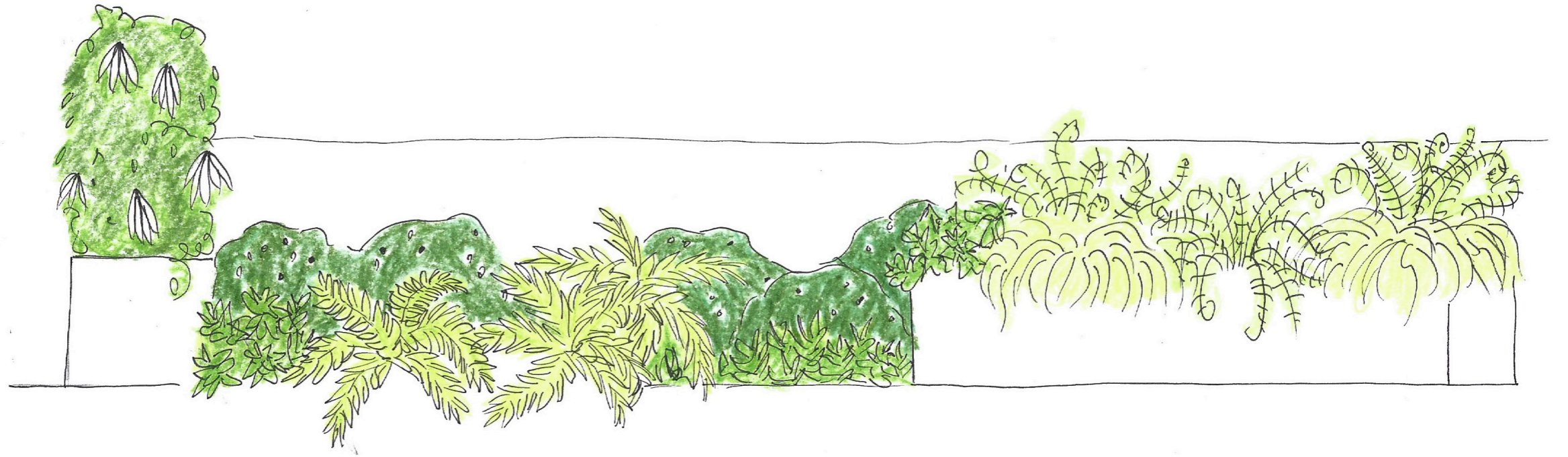
Dryopteris erythrosora 'Brilliance'



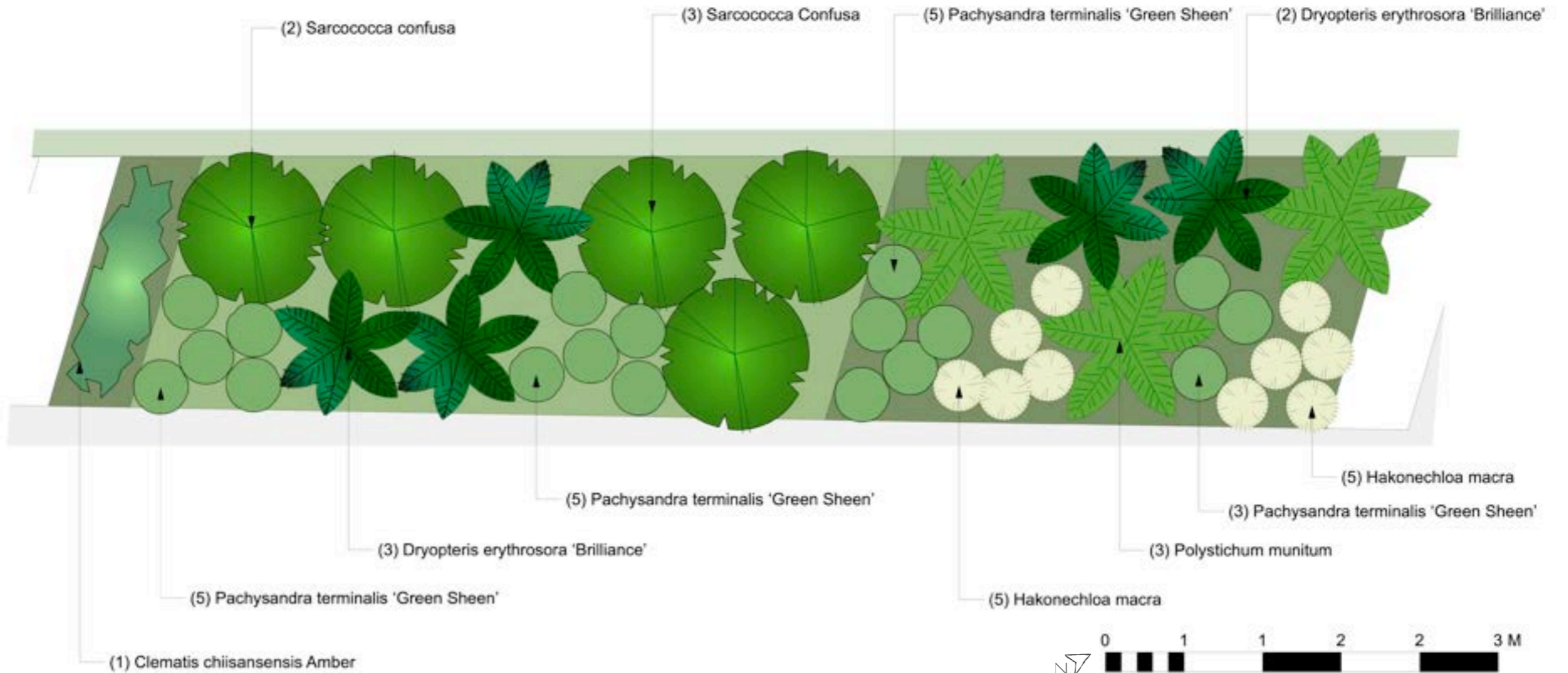
Hyacinthoides hispanica white



Galanthus 'Gravity'



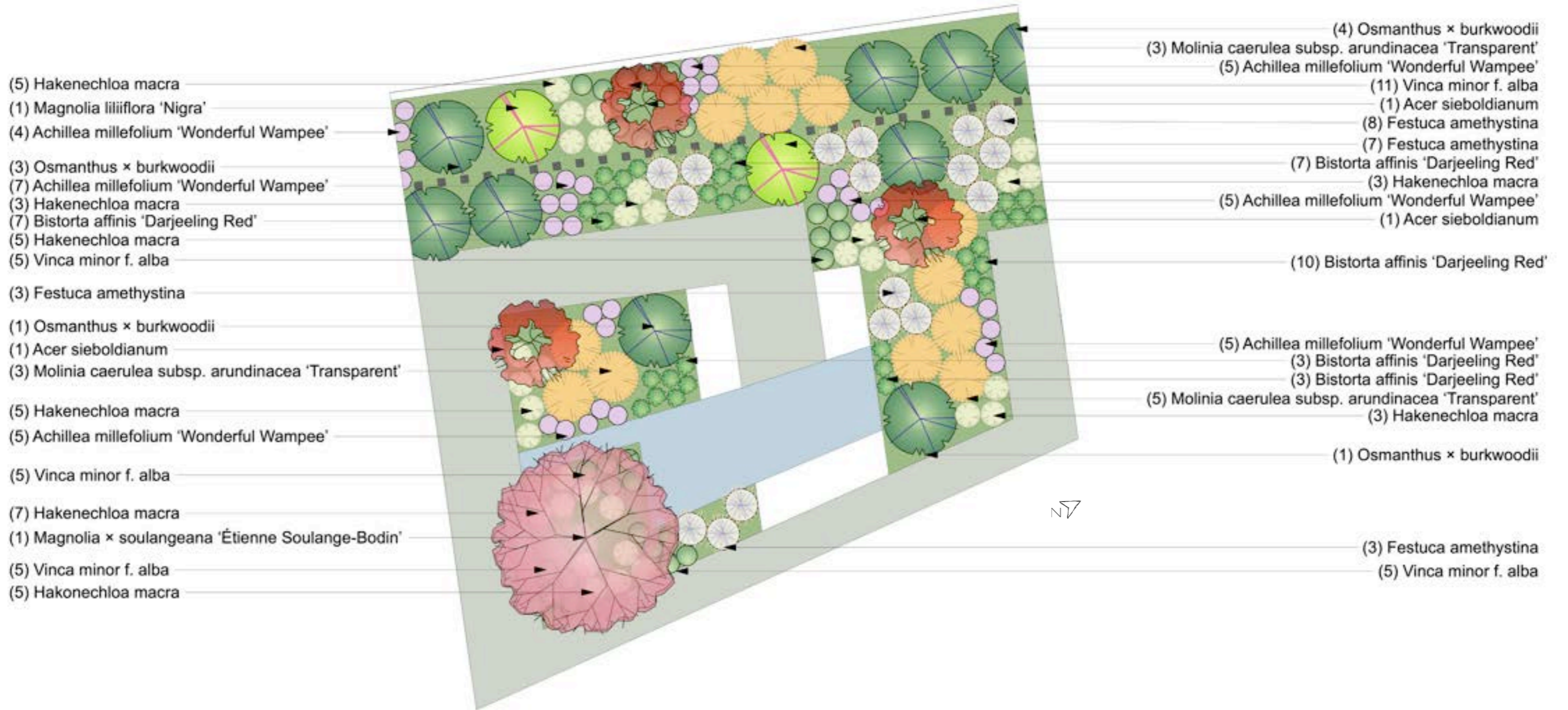
Plant Name	Quantity	Scheduled Size
Sarcococca confusa	5	2 L
Dryopteris erythrosora 'Brilliance'	5	1 L
Polystichum munitum	3	1 L
Hakonechloa macra	10	9 cm
Pachysandra terminalis 'Green Sheen'	18	9 cm
Clematis chiisansensis Amber	1	2 L
Hyacinthoides hispanica white	33	Bulbs (Plant in groups of 3)
Galanthus 'Gravity'	25	Bulbs (plant in groups of 5)





# planting.

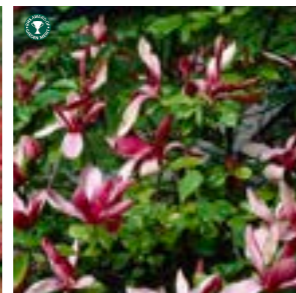
isokon - sunny bed



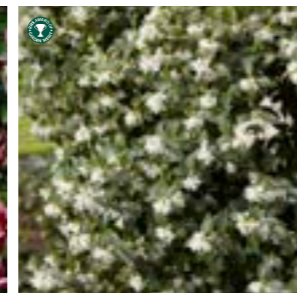
Magnolia × soulangeana 'Étienne Soulange-Bodin'



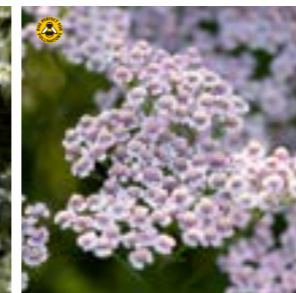
Acer sieboldianum



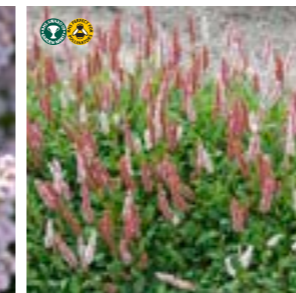
Magnolia liliiflora 'Nigra'



Osmanthus × burkwoodii



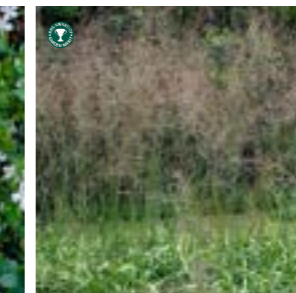
Achillea millefolium 'Wonderful Wampee' (Tutti Frutti Series)



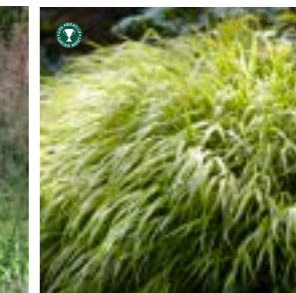
Bistorta affinis 'Darjeeling Red'



Vinca minor f. alba



Molinia caerulea subsp. arundinacea 'Transparent'



Hakonechloa macra

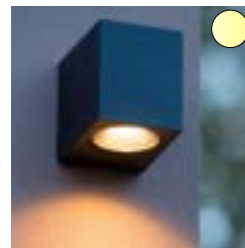
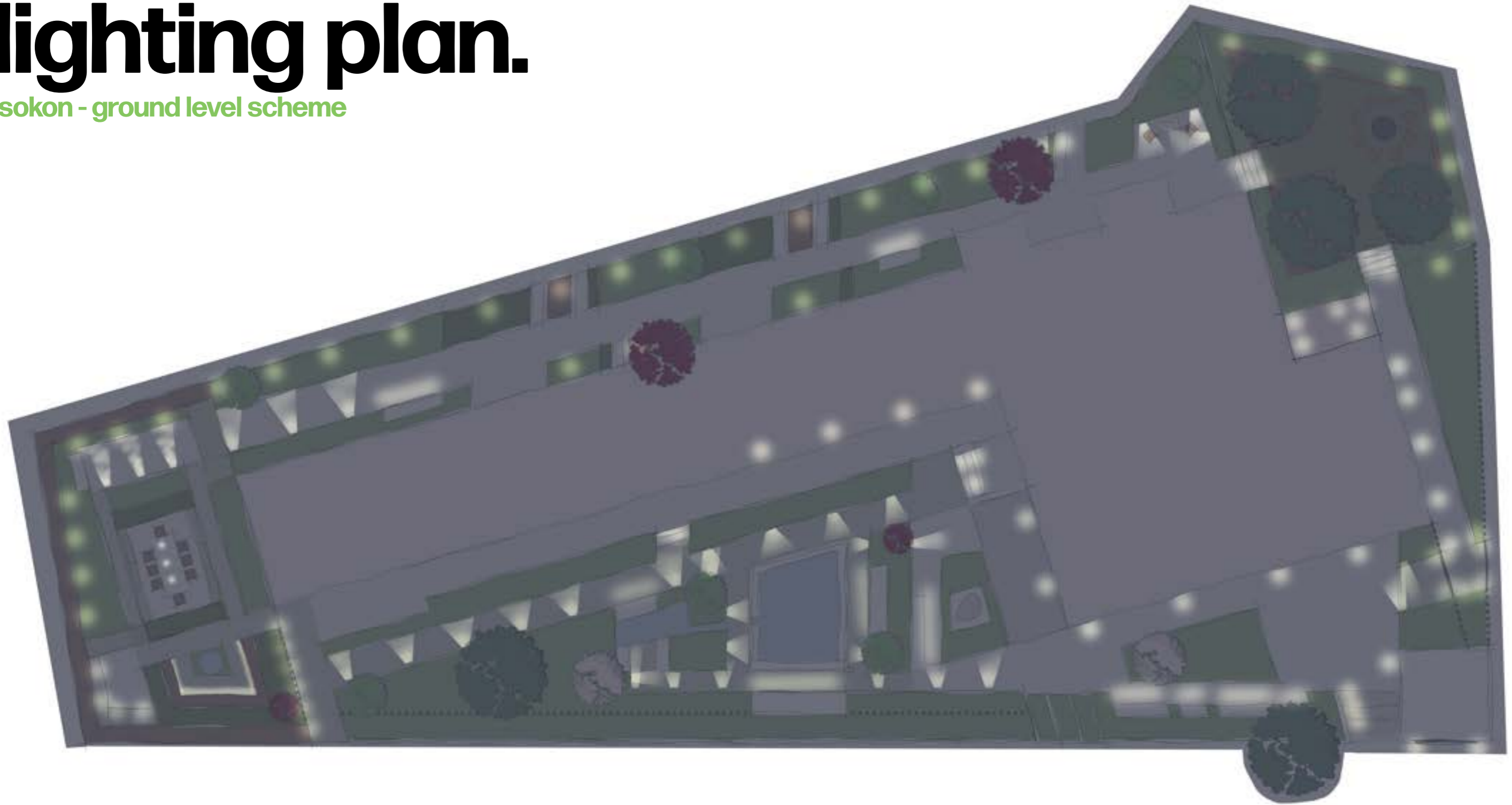


Festuca amethystina



# lighting plan.

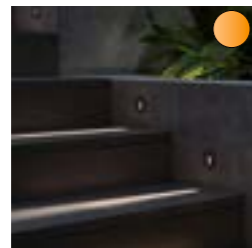
isokon - ground level scheme



Down Lighting

2700K

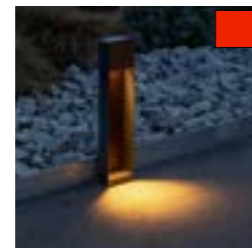
To be mounted on fence posts and external walls. All lights facing downwards. Matt Grey finish to colour match all other exterior metal work.



Stair Lighting

2700K

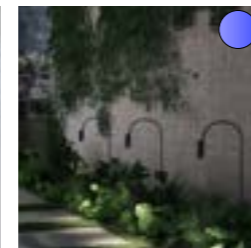
To illuminate all steps and the roof terrace side access walkway. Matt Grey finish to colour match all other exterior metal work.



Stair Lighting

2700K

Placed abutting the edge of walkways in planting beds. Light angle adjusted for path width. Matt Grey finish to colour match all other exterior metal work.



Path Lighting

2700K

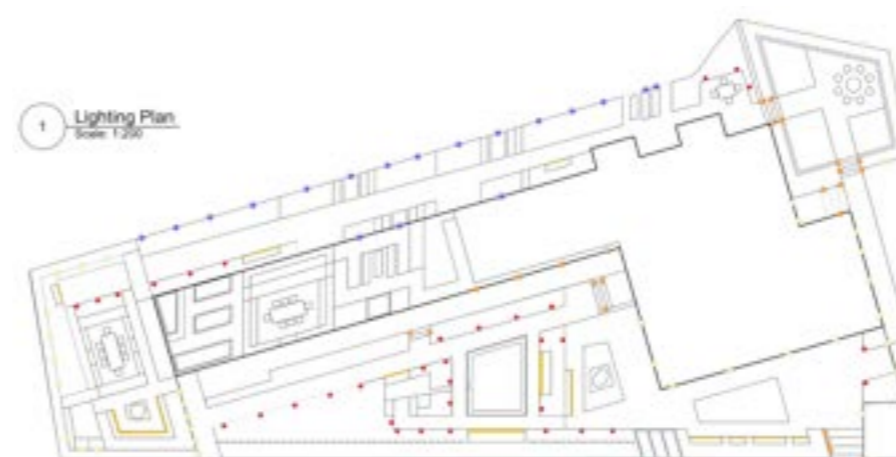
Feature down lighting for bistro floating benches & raised beds. Corten steel finish.



Under Bench Lighting

2700K

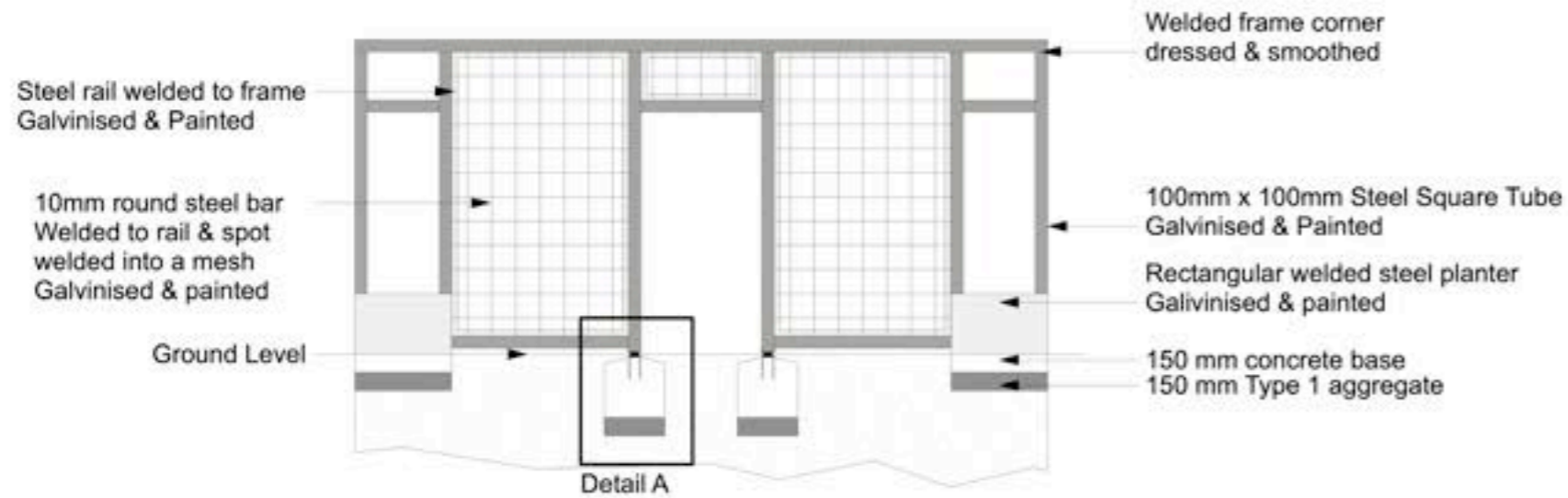
Under lit sculptural concrete benches. Matt Grey finish to colour match all other exterior metal work.



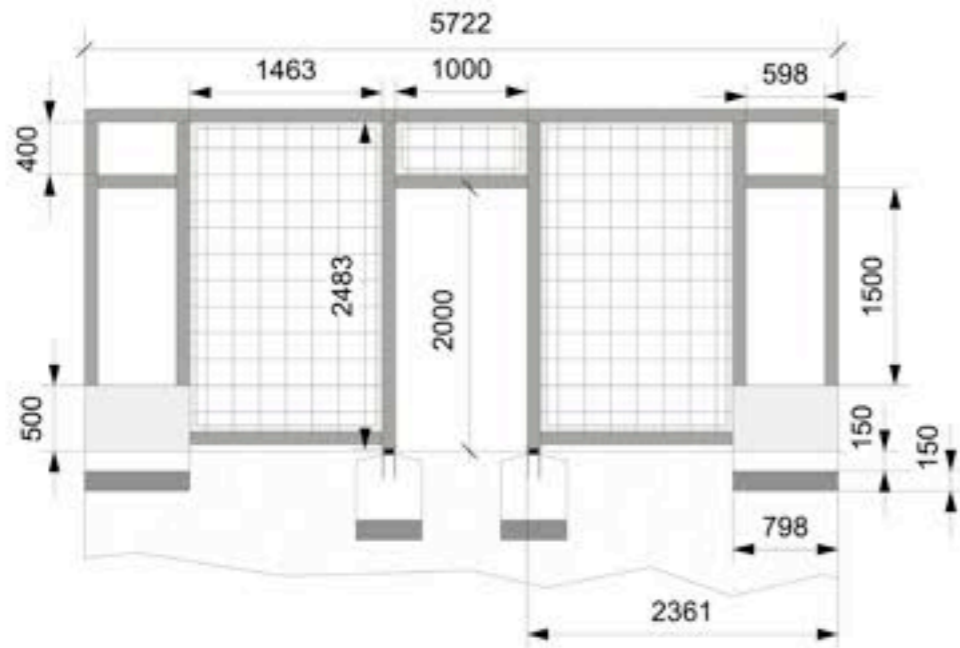
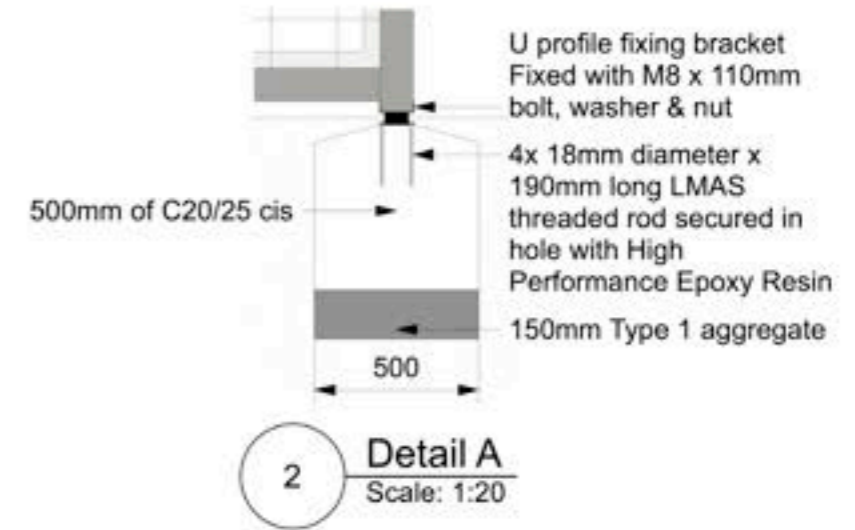


# construction.

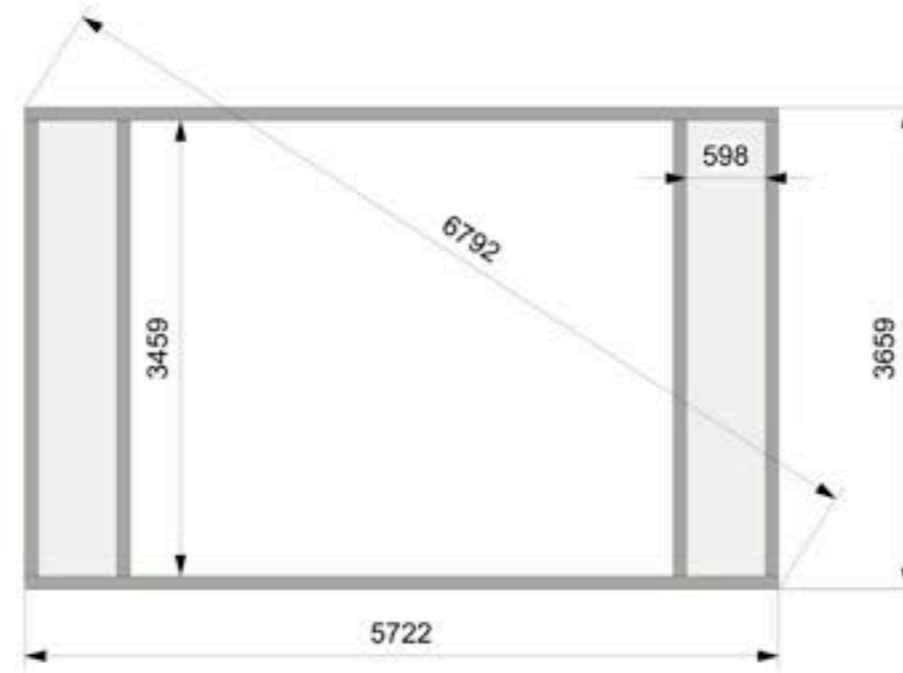
isokon - metal pergola



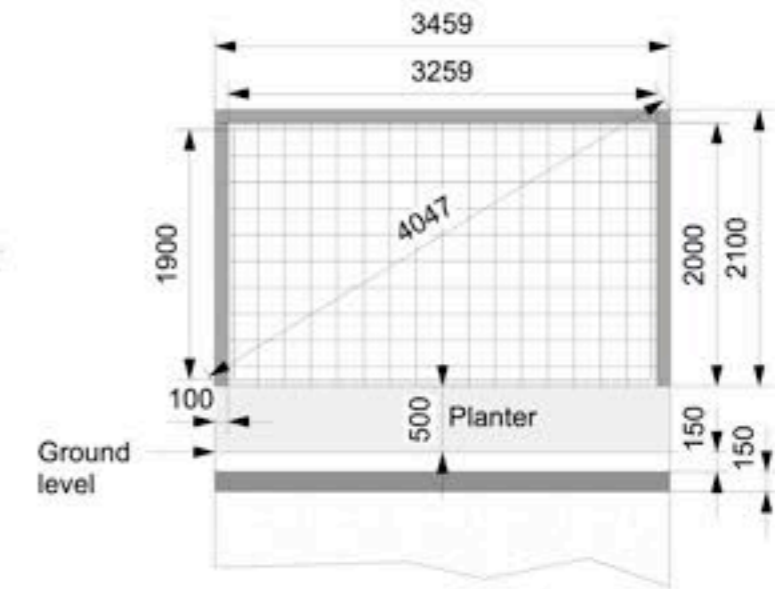
1 Pergola Side Elevation - Details  
Scale: 1:50



3 Pergola Side Elevation - Dimensions  
Scale: 1:50



4 Pergola Plan View  
Scale: 1:50



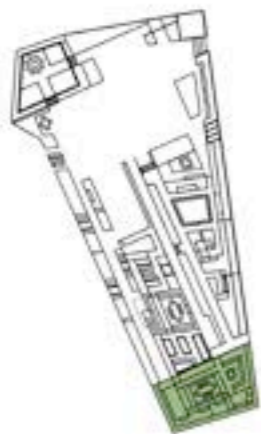
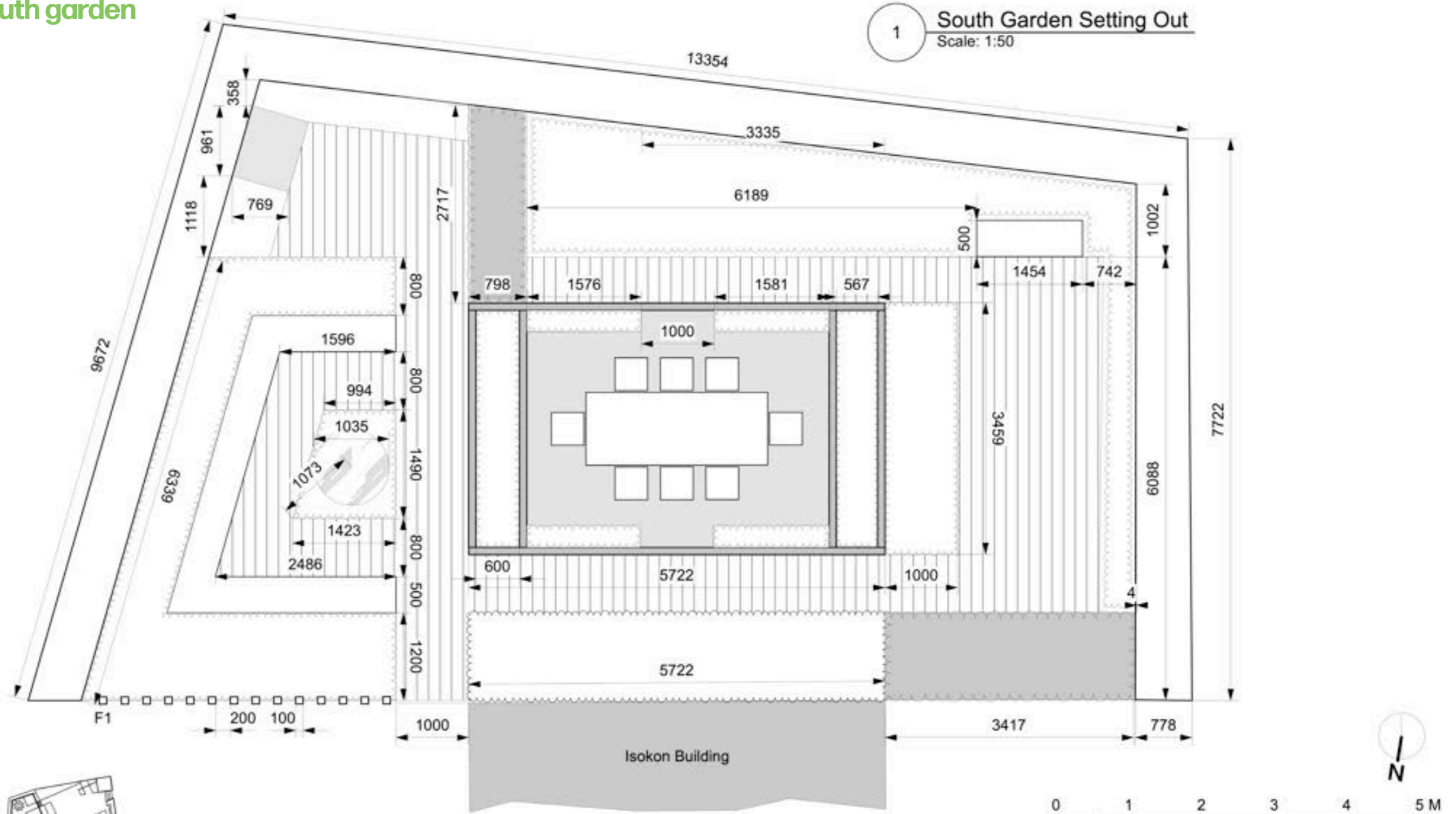
5 Pergola End Elevation  
Scale: 1:50

Project Isokon	
Sheet Title Steel Pergola With Planters Construction Detail	
Sheet Number 4	Date 06/11/2023
Drawn By Izzy Carruthers	Scale - if not shown on individual drawings 1:50 when printed at A3



# setting out.

isokon - south garden



South Garden Location

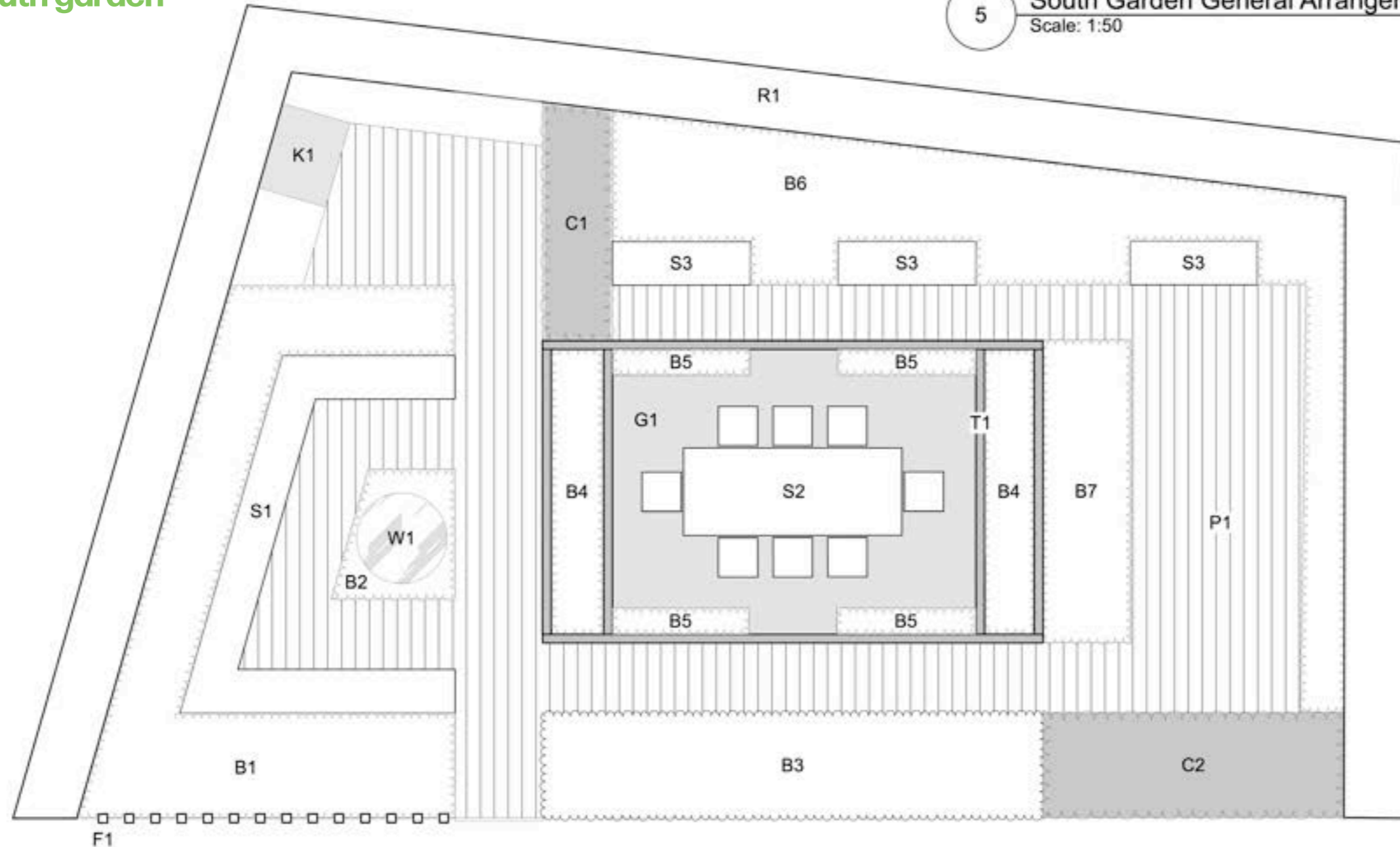
Project Isokon	
Sheet Title South Garden Setting Out	
Sheet Number 6	Date 06/11/2023
Drawn By Izzy Carruthers	Scale - if not shown on individual drawings 1:50 when printed at A3



# general arrangement.

isokon - south garden

5 South Garden General Arrangement  
Scale: 1:50



- 100x100mm Galvanised painted steel posts spaced 200mm from edge to edge. Each post capped and welded to the inside of the raised planter to a height of 2000mm
- Proposed bespoke raised bed (750mm) high. Galvanised and painted steel. See planting plan for detail.
- Proposed ground level bed planted with damp tolerant planting to act as an overflow for the container pond. See planting plan for detail.
- Proposed ground level bed planted with damp tolerant planting to act as an overflow for the container pond. See planting plan for detail.
- Proposed bespoke raised bed (500mm) high. Galvanised and painted steel. See planting plan for planting detail & pergola construction drawing for planter detail.
- Proposed ground level beds. See planting plan for detail.

- Proposed ground level beds. See planting plan for detail.
- Proposed ground level beds. See planting plan for detail.
- Cast polished concrete bench for casual seating. Detail tbc.
- Formal dining. Detail tbc.
- Cast polished concrete benches for casual seating. Detail tbc.
- Circular raised pond with auto top-up. Detail tbc.

- Outdoor Kitchen. Cooking surface & built in BBQ. Details tbc.
- Retaining wall. Rendered, painted & topped with insect hotel wood layer. See wall construction document for detail.
- Galvanised steel walkway underplanted with ground cover planting. See planting plan for details.
- Steel trellis connected to a steel arch, galvanised & painted. Planting bed below trellis. See construction document & planting plans for details.
- Steel arch, galvanised & painted. See construction document & planting plans for details.



Project <b>Isokon</b>	
Sheet Title <b>South Garden General Arrangement</b>	
Sheet Number <b>5</b>	Date <b>06/11/2023</b>
Drawn By <b>Izzy Carruthers</b>	Scale - if not shown on individual drawings <b>1:50 when printed at A3</b>



# pocket park.

take ten - a london pop-up pocket park



"The time to relax is when you don't have the time for it."

- Sydney Harris

Fragrant pocket parks to pause, relax and unwind within a hurried cityscape.



# designer profile.

izzy carruthers



## why garden design?

As a former product designer, I have always relished in the creative challenge and problem-solving involved in design. I loved working alongside teams to develop medical products and consumer goods but knew that my real passion was for nature and the outdoors. I decided to pursue garden design with a desire for creative challenge, a love of nature, and the goal of positively impacting both the environment and people's lives through the collaborative creation of beautiful and functional outdoor spaces.

## career

Director of Innovation & Design

Lighthouse Consultancy

Oct. 2022 - Present

Volunteer Gardener

Hampton Court

April 2023

Product, Graphics & Brand Designer

Freelance

May 2022 - Oct. 2022

Designer & Product Category Manager

Surechill

Oct. 2019 - May 2022

## education

Garden Design Diploma

KLC (West Dean University)

Distinction

2023

BA Industrial Design

Savannah College of Art & Design, GA, USA

Academic Scholarship, Magna Cum Laude

2015 - 2019

## software

vectorworks

sketchup

adobe photoshop

adobe illustrator

adobe indesign

solidworks

rhino

keyshot