



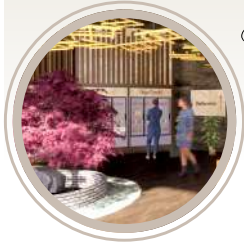
POR
TFOLIO
LIO



Claudia Ambrosi

INTERIOR ARCHITECTURE

Contents



Korean Restaurant

HOSPITALITY DESIGN

Pages: 3 - 7



Mixed Use Space

COMMERCIAL DESIGN

Pages: 8 - 10



Reception Desk

DETAILED WORKING DRAWINGS

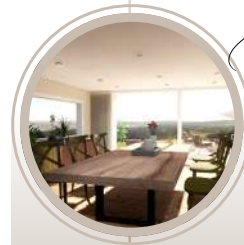
Pages: 11 - 13



Retreat Design

"SKRIVA" A WRITER'S RETREAT
HOSPITALITY DESIGN

Pages: 14 - 15



Residential Design

FAMILY COTTAGE
AMARA DESIGN COMPETITION 2021

Pages: 16 - 17

Korean Restaurant

PROJECT TYPE: HOSPITALITY DESIGN

YEAR: 2022

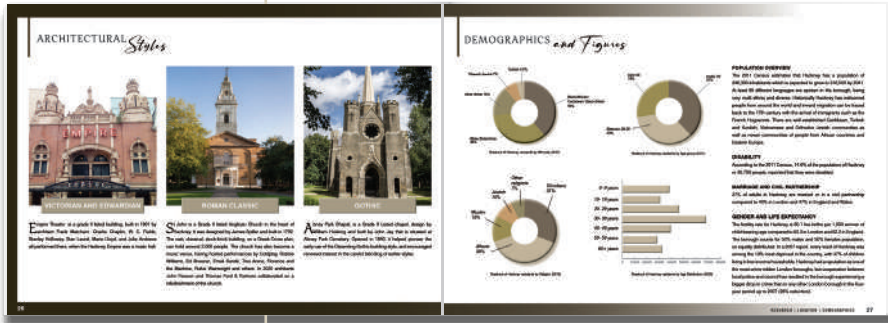
LOCATION: HACKNEY, LONDON

SIZE: 700 m²

The brief was to design the first physical store and restaurant for vegan kimchi brand Onggi, based in Hackney, London. The space allowed for the possibility to design a first floor as well, and the functions were chosen after in depth research about the client, location and demographics. Every detail, from the natural materials, tactile texture, to atmospheric lights is thought carefully to allow the guests into a truly immersive experience in the Korean culinary culture.



Research and Concept



LOCATION RESEARCH EXTRACT FROM THE DOSSIER



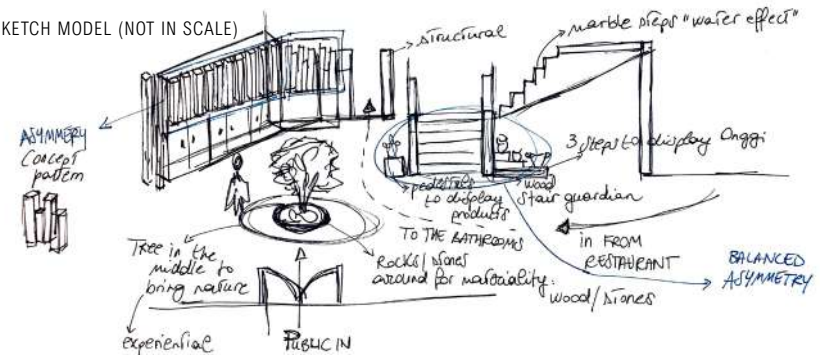
CONCEPT IMAGES

The concept **Balanced Asymmetry** will give form to a delightful game of organic geometric shapes vs rectilinear lines, warm light neutral tones vs darker ones. All together they will sit in harmony and create a unique fusion of contemporary design and traditional Korean motifs. The concept pays homage to the core values of the brand to inspire people to eat healthier and connect with nature.

Design Development



3D SKETCH MODEL (NOT IN SCALE)



HAND SKETCHES OF THE SHOP



ZONING DIAGRAMS



GROUND FLOOR PLAN



RESTAURANT RENDERED VISUAL



GROUND FLOOR FURNITURE & MATERIALS BOARD



WINE BAR AND KITCHEN RENDERED VISUAL



FIRST FLOOR RENDERED VISUAL

The first floor is designed as a multi-functional space, the lower ceiling allows to have a more private dining room, divided from the rest of the space with sound absorbing curtains. This area, thanks to the adjustable tables can be used as cooking workshops space as well. The rest of the area is dedicated to the co-working, in light of the large component of freelancers in the local population of the location. The same tables can become a dining space in the evening, making the most use of the space. Dumbwaiter lifts directly from the kitchen have been installed to allow the staff to serve the meals without using the public staircase.



FIRST FLOOR PLAN AND LIGHTING PLAN



NIGHT TIME VIEW OF THE STORE



SECTION - SOUTH

By the staircase a display of traditional Korean pottery take place. The pedestals and stairs are a clear representation of the concept Balanced Asymmetry, as they have different forms however together they still create an harmonious display.

The installation in the centre of the shop with the tree brings in nature and inside there is a mirror to represent water reflections, an important natural element in the native town of the founder. Layers of lights in different shapes rounded vs rectilinear have been selected to enhance an intimate atmosphere at night time in the overall space.

SKILLS SHOWN

Hand Sketching
Model Making
AutoCAD
SketchUp Pro
Enscape
Photoshop
InDesign

Mixed Use Space

PROJECT TYPE: MIXED USE COMMERCIAL SPACE

YEAR: 2022

LOCATION: MONTRÉAL - CANADA

SIZE: 400 m²

The brief was to design a mixed use space for the community of Little Burgundy in Canada, as the new opening of the Los Angeles-based screen printing start-up Print Shop LA. The space had to consider private areas for the client, an office, and public spaces like the café, shop and co-working. The building had to include a reception/welcome area, facilities and storage for all functions, plus a kitchenette for the staff. The image above is a visual of the ground floor view from the public entrance.



The decorative scheme for the space reflects the vibrant colours of Print Shop LA, and the work of the artists founder. The industrial style furniture reflect the heritage of the building, while they also inject a casual atmosphere for people to relax and unwind. The café area (top image to the right) can host up to 16 customers alongside the yellow banquette seating. The counter top is made or recycled terrazzo surface, copper sheets edges, and it's wrapped by bamboo. The co-working space (bottom right side) can host up to six people, in different positions.



PLAN GROUND FLOOR



OFFICE AND MEETING ROOM RENDERED VISUAL



SKILLS SHOWN

- AutoCAD
- SketchUp Pro
- Enscape
- Photoshop

Reception Desk

PROJECT TYPE: DETAILED WORKING DRAWINGS

YEAR: 2021

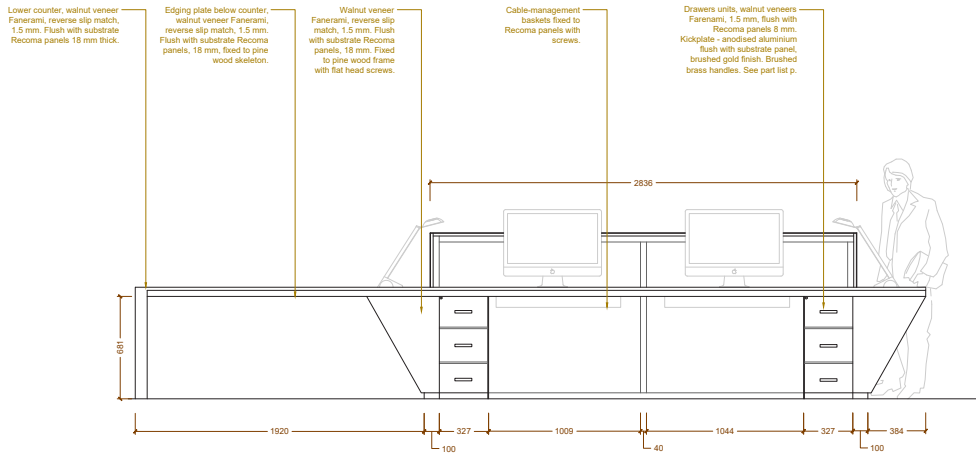
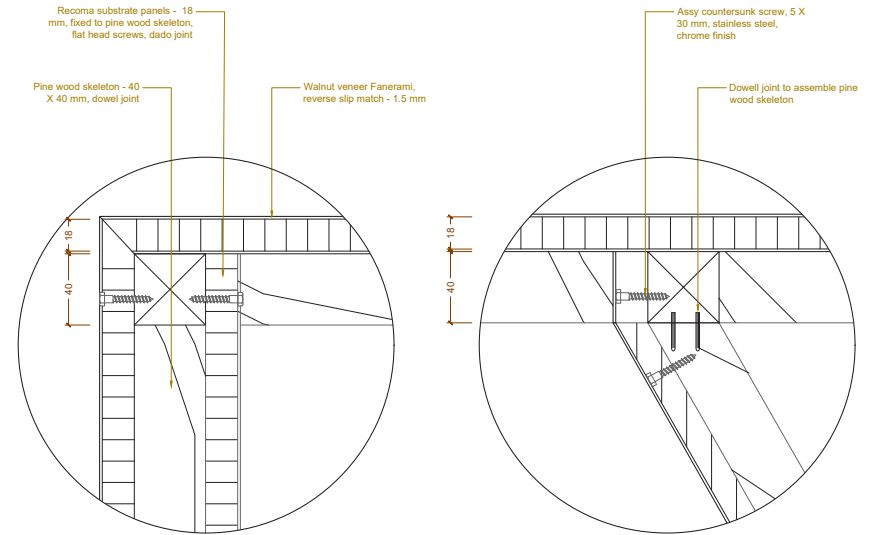
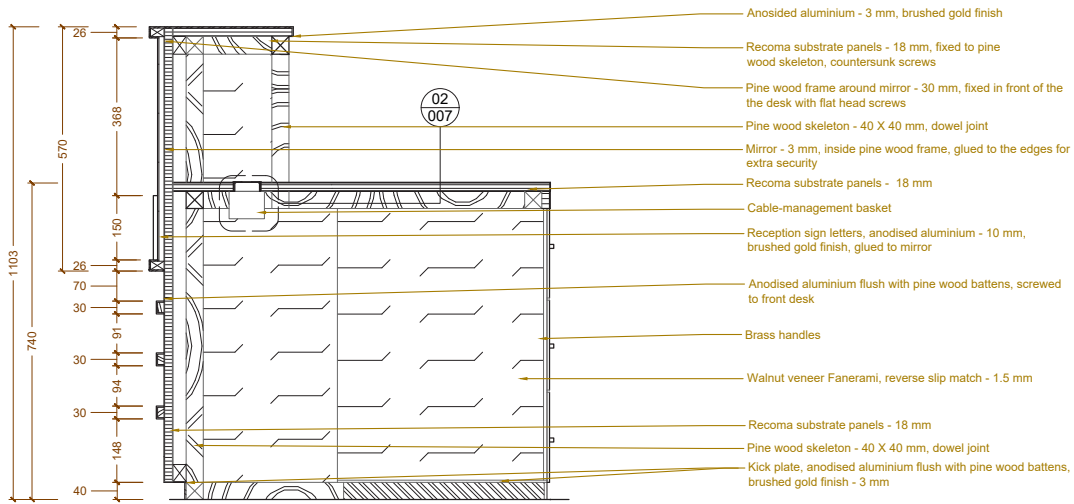
LOCATION: STOCKHOLM

SIZE: 5250 X 900 MM

The brief was to design a bespoke reception desk to be located in a multi-functional building in central Stockholm. The task required a presentation of detailed technical drawings showing joints and materials involved. The desk needed to have space for two receptionists, storage, and cable-management. The materials selected had to be sustainable, and locally sourced. Shown here above, a rendered visual of the reception desk in a context.



Technical Drawings



Materials and Construction



Reclaimed walnut veneer sheets



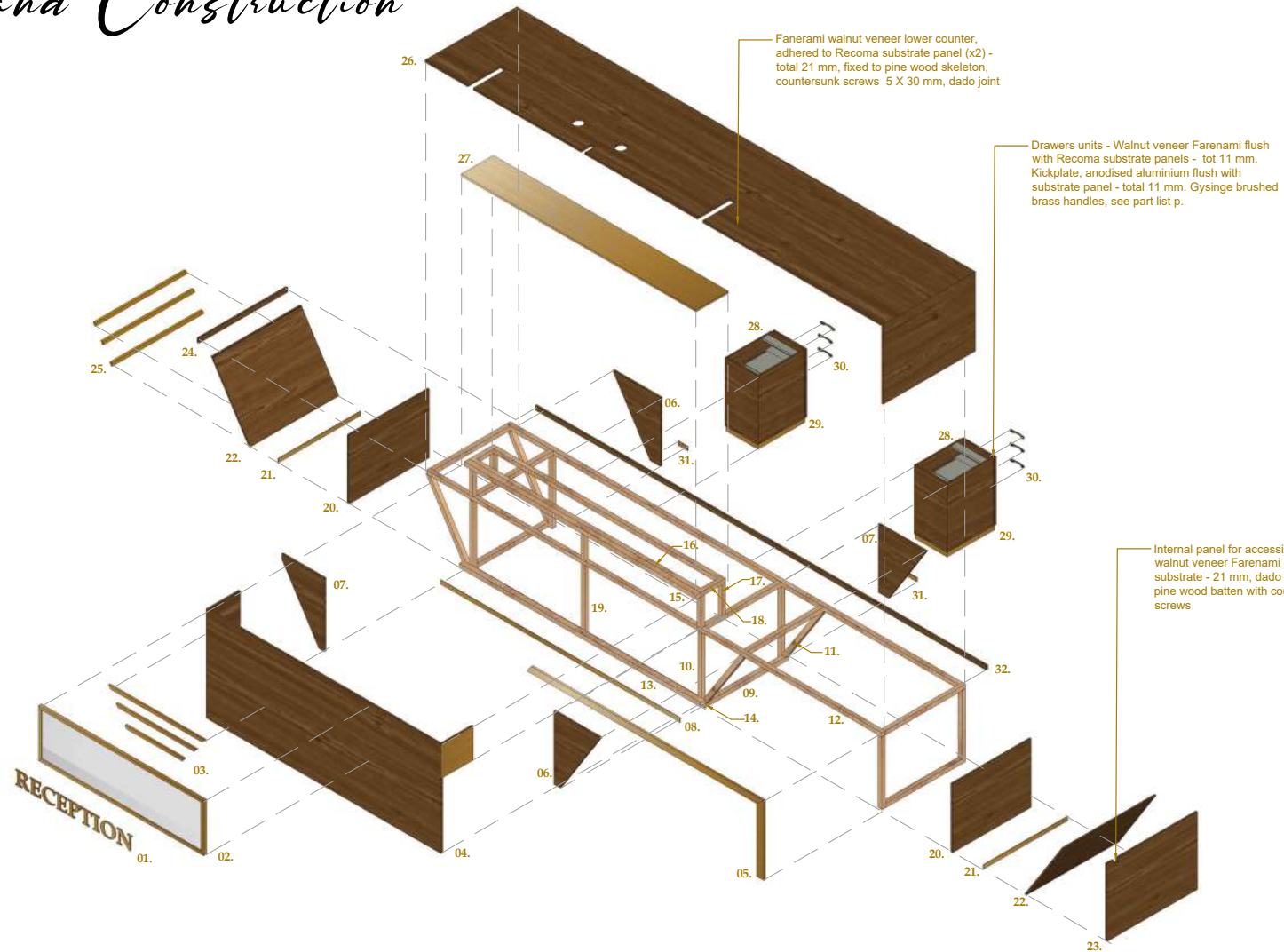
Recycled anodised aluminium sheets



Reclaimed Swedish pine wood



Substrate panels in recycled juice packaging by Recoma



All materials are locally sourced from suppliers in Sweden, and sustainable, meaning reclaimed or 100% recycled and recyclable.

KEY:

- 01. Letters - anodised aluminium
- 02. Mirror frame - anodised aluminium
- 03. Decorative stripes front - anodised aluminium
- 04. Front desk sides - walnut veneer
- 05. Edge lower counter - anodised aluminium
- 06 - 07. Sides lower counter - walnut veneer

- 08. Kickplate - anodised aluminium
- 09 - 19. Skeleton - reclaimed pine wood
- 20. Panels internal - walnut veneer
- 21. Kickplate sides - anodised aluminium
- 22 - 24. Panels - walnut veneer
- 25. Decorative stripes side - anodised aluminium
- 26. Lower counter - walnut veneer

- 27. Top higher counter - anodised aluminium
- 28. Drawers sides - walnut veneer
- 29. Drawers kickplate - anodised aluminium
- 30. Drawers handles - antique brass
- 31. Kickplate rear - anodised aluminium
- 32. Rear panel - walnut veneer

SKILLS SHOWN

- AutoCAD
- SketchUp Pro
- Enscape
- Photoshop

Writer's Retreat

PROJECT TYPE: RETREAT DESIGN

YEAR: 2021

LOCATION: STOCKHOLM

SIZE: 169 m²

The brief was to design an innovative retreat that would welcome visitors for short/medium-long stays. The space would have to include four identical bedrooms with en-suite bathroom, a kitchenette and communal shared space with functions according to the theme of the retreat, which was free of choice. The image above shows the reading/writing area with bespoke library and window seating, the coffee-break room, and the water installation in the corridor.



SKILLS SHOWN

- AutoCAD
- SketchUp Pro
- Enscape
- Photoshop
- InDesign

For the purpose of this project, a park in the island of Djurgården, between Stockholm City, and the archipelago was chosen as location. The theme preferred was a creative retreat, focused on female writers and bloggers. The interior scheme links to the of the Four Elements: Air, Fire, Earth and Water, through the use of colours, textile, and materials. This decision was inspired by the proximity to nature of the retreat's site.



THE UNINTERRUPTED FLOW OF WORDS



30ARD

Family Cottage

**WINNER
AMARA
DESIGN
COMPETITION
2021**

**PROJECT TYPE: RESIDENTIAL DESIGN
AMARA DESIGN COMPETITION 2021
YEAR: 2021
LOCATION: HAMPSHIRE, UK
SIZE: 150 m²**

The brief was to transform the ground floor of a 200-year old rural cottage into a functional space for a young family of four with two children, and create a place where they can work from home, exercise and home school. The family loves an eclectic style with contemporary and vintage mixed together, pattern and colours. The clients are very keen on sustainability and to up-cycle furniture when possible.



AMARA is a leading online platform for contemporary and luxury home decor. To support emerging talents, AMARA hosted a Student Interior Design Competition with KLC School of Design in July 2021. I was awarded Overall Winner among 15 shortlisted entries, by three industry professionals judges.



"I thought Claudia's spatial planning was very good and I loved her use of colour, pattern and texture. She offered some clever design solutions to what was a tricky brief. There was a strong continuous thread from initial concept right through to her final visuals. Her presentation boards were excellent and her visuals really sold the overall design scheme."

CHARMAINE WHITE - FOUNDER THE WHITE HOUSE INTERIORS

"The scheme is well structured and considered, paying close attention to the brief. The use of colour, responsible sourcing and furniture placement results in a cohesive proposal."

RODDY CLARKE - DESIGNER, PRESENTER AND JOURNALIST

SKILLS SHOWN

- AutoCAD
- SketchUp Pro
- Enscape
- Photoshop
- InDesign





Claudia Ambrosi
INTERIOR ARCHITECTURE PORTFOLIO

FOR MORE PROJECTS AND DETAILS VISIT
WWW.INTERIORSBYAMBROSI.COM