



**S. C.**

# **Design - Landscape - Aftercare**

**Selected Work**

**[Enquiries@surroundingcounties.co.uk](mailto:Enquiries@surroundingcounties.co.uk)**

**01**

2024  
**Outside Matters.**  
Built - Residential  
Pg-4 / Pg-15

**02**

2024  
**Step By Step.**  
Built - Residential  
Pg-16 / Pg-27

**03**

2024  
**A Bold Movement.**  
Concept - Residential  
Pg-28 / Pg-39

**04**

2024  
**Roots To The Future.**  
Concept- material Research  
Pg-40 / Pg-51

**05**

2024  
**The Creative Landscape Hub.**  
Concept - Community project  
Pg-52/ Pg-61

**06**

2024  
**Hampton Court.**  
Competition winners.  
Pg-62 / Pg-65

---

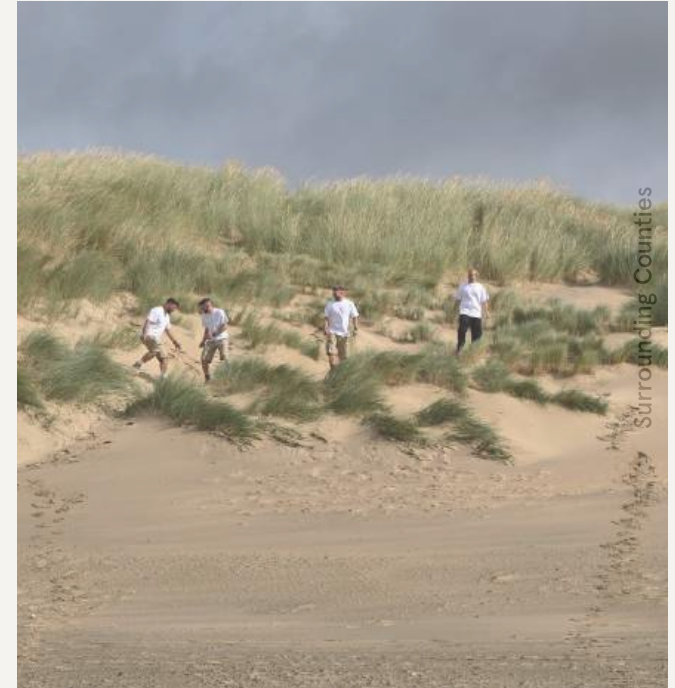
ABOUT:

## Surrounding Counties

---

At Surrounding Counties, we are a contemporary garden design and landscaping company based in Oxfordshire, dedicated to creating stunning and functional outdoor spaces tailored to our clients visions. With a focus on innovative designs, quality craftsmanship, and attention to detail, we bring every project to life, from initial concept through to aftercare. Our mission is to enhance outdoor living by crafting unique, inspiring gardens that reflect individual lifestyles and aspirations. Over the next 10 years, we aim to become a trusted name across the UK in garden design and landscaping, known for our creativity, exceptional service, and ability to transform spaces into something truly extraordinary.

---





# Outside Matters.

**Year: 2024**

**Team: Surrounding Counties Ltd**

**Type: Concept Design**

**Role: Visualization and design**

**Status: Built / Completed**

This project came to us through a recommendation, and from the very first meeting, we understood the client's vision. Together, we reimagined their garden into a fully functional space perfect for hosting year-round.

This project was all about creating a space that seamlessly blends practicality with beauty. Working closely with the client, we designed a garden that uplifts the spirit—a place where dining feels like a special occasion and gardening becomes a joy, free from the worry of mess or maintenance challenges.

Every detail was considered to ensure the garden serves multiple purposes: as a serene escape, a functional workspace, and a welcoming venue for entertaining year-round. By combining thoughtful design with an understanding of the client's needs, we delivered a space that is both elegant and endlessly versatile—a true reflection of outdoor living at its best.





## Outside Matters.

**Year:** 2024

**Team:** Surrounding Counties Ltd

**Type:** Lighting Concept

**Role:** Visualization and design

**Status:** Built / Completed

At Surrounding Counties, we believe in lighting that enhances a garden's natural beauty without overwhelming it. Our lighting concept is designed with sensitivity to the environment, aiming to support local wildlife and insects rather than disturb them.

The plan focuses on subtle, wayfinding illumination—gentle lights that guide you along paths and highlight key destinations. By softly lighting routes and focal points, the garden becomes not only a safe and inviting space to use in the evening but also one that respects its surroundings.

This restrained approach ensures the magic of the garden is preserved, even after dark.



Surrounding Counties



portfolio



## Outside Matters.

**Year:** 2024  
**Team:** Surrounding Counties Ltd  
**Type:** Sketch model  
**Role:** Visualization and design  
**Status:** Built / Completed

Before bringing this project to life, we began with a detailed sketch model in Vectorworks. This initial model served as a vital tool to communicate our concept clearly to the client. By using Vectorworks, we were able to explore spatial layouts, define levels, and map out how the design would interact with the existing garden structure.

This process allowed us to collaborate with the client early on, ensuring every element of the garden aligned with their vision. Once the foundational concept was approved, we moved into the next phase—bringing the design to life through detailed visualizations in Enscape and Photoshop. These tools helped us refine the mood, materials, and planting schemes, giving the client a realistic glimpse of the finished garden.

By combining the technical precision of Vectorworks with the creative visualisation of Enscape and Photoshop, we ensured the design was both practical and inspiring—a perfect balance of form and function.







## Step By Step.

**Year:** 2024

**Team:** Surrounding Counties Ltd

**Type:** Concept Design

**Role:** Visualization and design

**Status:** Built / Completed

The brief for this project was simple yet brimming with potential. Initially, the client envisioned a large, elevated deck nearly a metre high at the back of the garden. However, through thoughtful collaboration, we proposed a design that transformed the entire space into a series of gradual level changes. This approach not only created a more seamless connection with the garden but also introduced distinct areas for cooking, dining, and relaxing.

The result is a garden that offers so much more than a single focal point. Whether it's enjoying a quiet moment with a book, hosting a meal outdoors, or simply taking in the beauty of the space, every corner of the garden has a purpose.

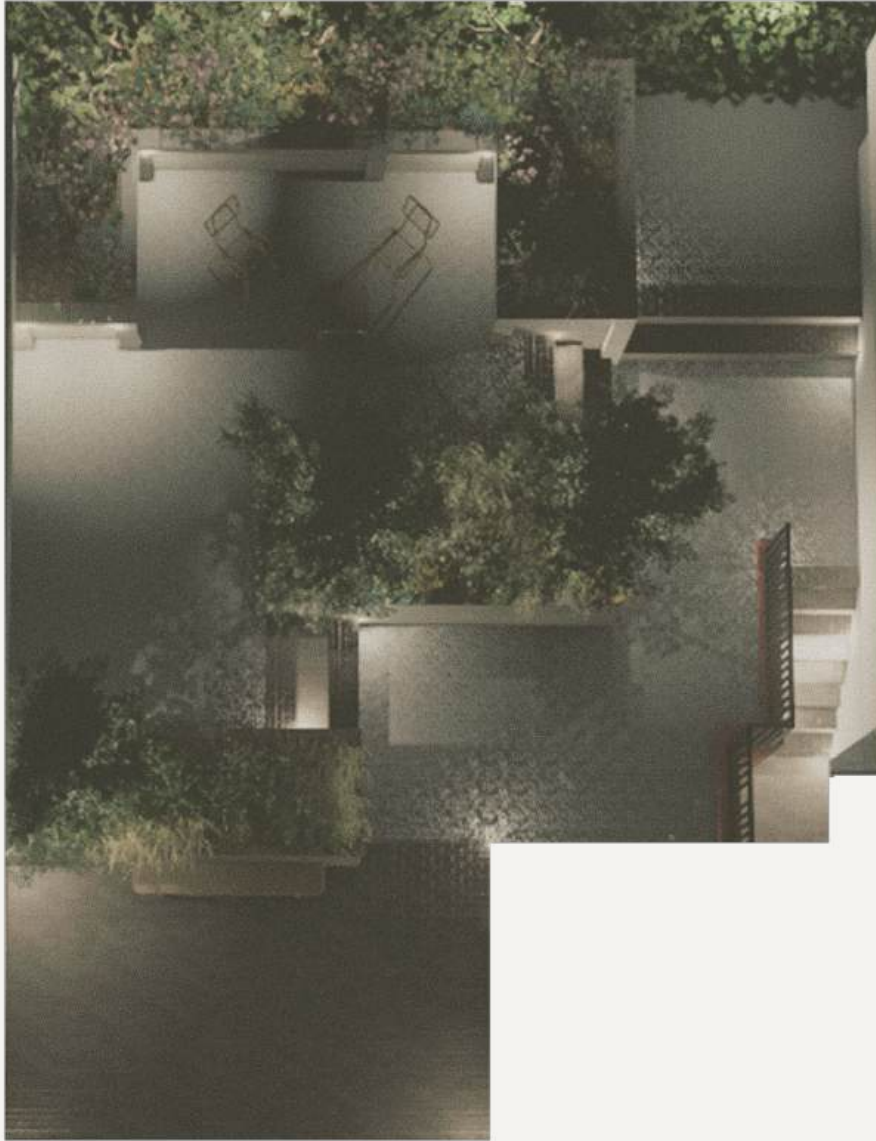
Careful consideration went into the choice of materials and planting, ensuring that everything harmonised with the surrounding environment while maintaining a timeless aesthetic. The result is a truly functional garden, designed to be lived in and loved all year round.



Surrounding Counties



portfolio



## Step By Step.

**Year:** 2024

**Team:** Surrounding Counties Ltd

**Type:** Lighting Concept

**Role:** Visualization and design

**Status:** Built / Completed

At Surrounding Counties, our lighting designs always aim to complement the natural beauty of a space while being mindful of wildlife and the environment. In this garden, the focus was on accentuating the newly planted trees, creating a subtle interplay of light and shadow that enhances their presence after dark.

Rather than flooding the garden with light, we used carefully placed fixtures to highlight key elements. The tree lighting was designed to be soft and directional, drawing attention to their structure and form without overwhelming the space. This approach not only creates a sense of depth and drama but also ensures the garden feels calm and natural at night.

Pathways and seating areas were gently illuminated to guide movement and provide a sense of safety, while the overall lighting scheme remains understated and respectful of the surrounding environment. It's a design that celebrates the garden's beauty while keeping its connection to nature intact.





## Step By Step.

Year: 2024

Team: Surrounding Counties Ltd

Type: Sketch model

Role: Visualization and design

Status: Built / Completed

For this project, we worked closely with the client to turn their vision into reality. Starting with a detailed concept, we used a sketch model in Vectorworks to communicate the design, ensuring every element aligned with their needs and desires. Once the concept was approved, we moved into visualisations using Enscape and Photoshop, bringing the design to life with stunning realism.

The result? A garden that is not only functional but also beautiful—a space that blends seamlessly with the home and offers year-round enjoyment. From initial ideas to the final details, this project was a true collaboration.

From initial ideas to the final details, this project was a true collaboration.





# A Bold Movement.

Year: 2024

Team: Surrounding Counties Ltd

Type: Concept Design

Role: Visualization and design

Status: Completed

This concept design, created for a charming couple, draws inspiration from their shared love of art and the unique architecture of their local area. Every element of the garden was carefully considered to reflect their passions and create a space that feels both personal and timeless.

The design balances functionality with elegance, offering areas for hosting friends and family alongside tranquil corners for quiet relaxation. The materials were chosen to echo those found in the surrounding town, grounding the garden in its local context while adding texture and warmth.

From the subtle nods to their artistic tastes to the thoughtful use of space, this garden is a perfect blend of creativity and practicality—a reflection of the couple's lifestyle and the beauty of their surroundings.







## A Bold Movement.

This concept showcases a layered design, where structured planting and elevated levels create a dynamic flow through the space. The pergola provides a striking focal point, framed by carefully placed trees that soften the overall geometry. Subtle lighting enhances the design's elegance, transforming the garden into a tranquil retreat both day and night.



## A Bold Movement.

Year: 2024

Team: Surrounding Counties Ltd

Type: Lighting concept

Role: Visualization and design

Status: Completed

At Surrounding Counties, our lighting philosophy is rooted in subtlety and respect for nature, and this garden is no exception. The lighting concept focuses on creating a tranquil atmosphere while ensuring functionality. Soft pools of light gently illuminate the pathways and key areas, guiding movement through the space without overpowering its natural charm.

The newly planted trees are highlighted with warm, directional lighting to showcase their structure, adding depth and drama without disrupting the surrounding environment. Each element of the lighting design was carefully considered to blend seamlessly with the garden's layered design, creating a space that feels safe, inviting, and harmonious.

This restrained yet elegant approach ensures the garden remains connected to its surroundings, offering beauty and usability long after the sun sets.



Surrounding Counties





## A Bold Movement.

This visual highlights the understated elegance of the pergola seating area, designed with natural materials and a minimalist ethos. The soft, directional lighting gently illuminates the space, creating a warm and inviting glow without overpowering the serene surroundings. The wooden structure, paired with the subtle lighting, fosters a harmonious connection to nature, offering a tranquil spot for evening relaxation.



# Roots to the Future.

Year: 2024

Team: Surrounding Counties Ltd

Type: Concept Design

Role: Visualization and design

Status: Completed

The vision for Saxon Meadows is one that combines minimalism, sustainability, and community engagement, creating spaces that enhance both the natural environment and the quality of life for its residents.

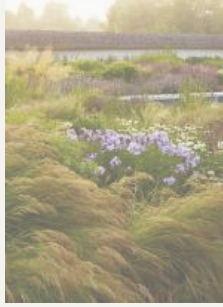
The courtyards within the estate will be transformed into minimalist, serene spaces that emphasize clean lines and simplicity. These courtyards will serve as tranquil communal areas, free from unnecessary clutter, allowing the beauty of the surrounding architecture and nature to take center stage. Natural materials and thoughtfully selected plantings will soften the modern design, blending the built environment with the natural one. The focus will be on creating a calm and cohesive aesthetic that invites residents to enjoy moments of quiet reflection or social interaction in an open and uncluttered setting.

# Roots to the Future.

Together, these design elements will create a balanced, thoughtful community that embraces sustainability, culture, and natural beauty, with spaces that invite both quiet contemplation and shared experiences.



# Roots to the Future. Flora Mood.



Texture, movement, and seasonality come together in harmony. A carefully curated mix of grasses and perennials creates a tapestry of colour and form, ensuring year-round interest and a dynamic, ever-changing landscape.

The planting scheme prioritizes soft, flowing shapes, allowing plants to blend seamlessly into one another. Species like Echinacea, Verbena bonariensis, and Stipa tenuissima introduce structure while maintaining a light and airy feel, evoking the beauty of wild meadows. These selections also invite pollinators, enhancing biodiversity within the garden.



Designed to age gracefully, this planting thrives with minimal intervention, allowing the garden to feel natural yet intentional. The result is a space that feels alive, offering moments of tranquility and inspiration as it changes with the seasons.

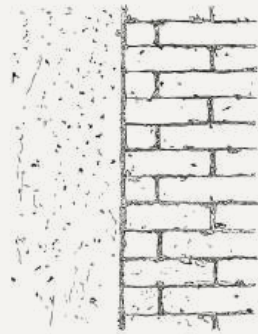
# Material.

## Development:

Reclaimed seating and carefully selected materials—thatch, concrete, and straw—complete the design, celebrating both sustainability and beauty. Together, these elements foster a sense of place where nature, architecture, and craftsmanship work in perfect harmony.



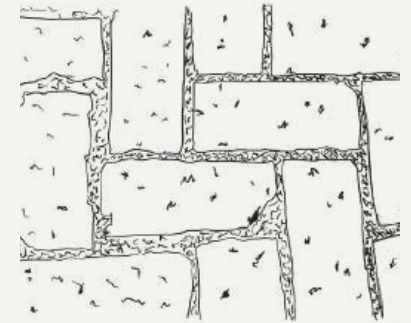
Re-claimed Seating and Paving



Concrete meets re-claimed bricks



Steel Pergola Balanced by Climber



Hand Made Bricks with Moss

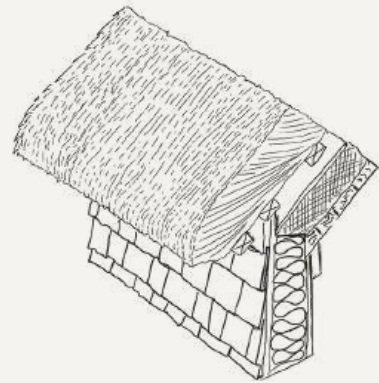
A contemporary steel pergola introduces a modern touch, balanced by climbing plants that soften its lines over time. This thoughtful mix of hard and soft materials creates a structure that evolves with the seasons, blending seamlessly into the landscape.



# Material.

## Development:

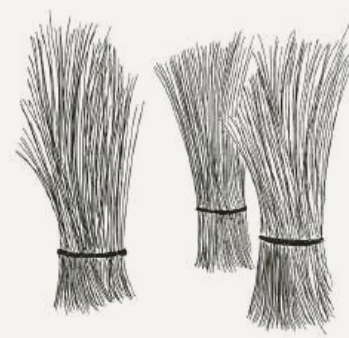
This material palette combines tradition and innovation, crafting a garden that feels both timeless and forward-thinking.



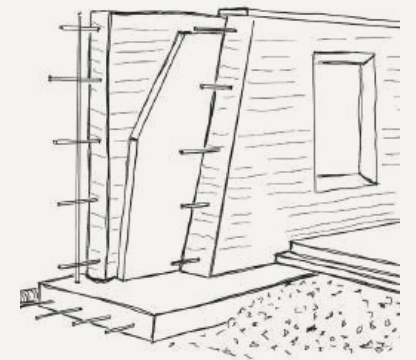
Thatch with reclaimed oak



handmade clay bricks



Straw wall system



Rammed earth

Reclaimed and handmade clay bricks, softened by moss growing naturally in the jointing compound, ground the space with texture and character. These elements are complemented by rammed earth walls, their warm, tactile surfaces a nod to traditional craftsmanship, paired with the eco-conscious addition of straw insulation for thermal efficiency.



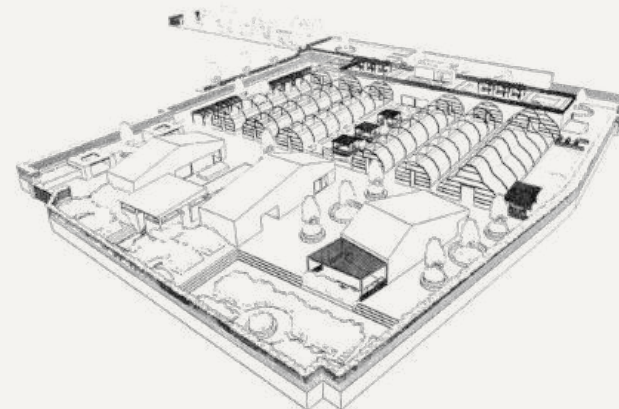


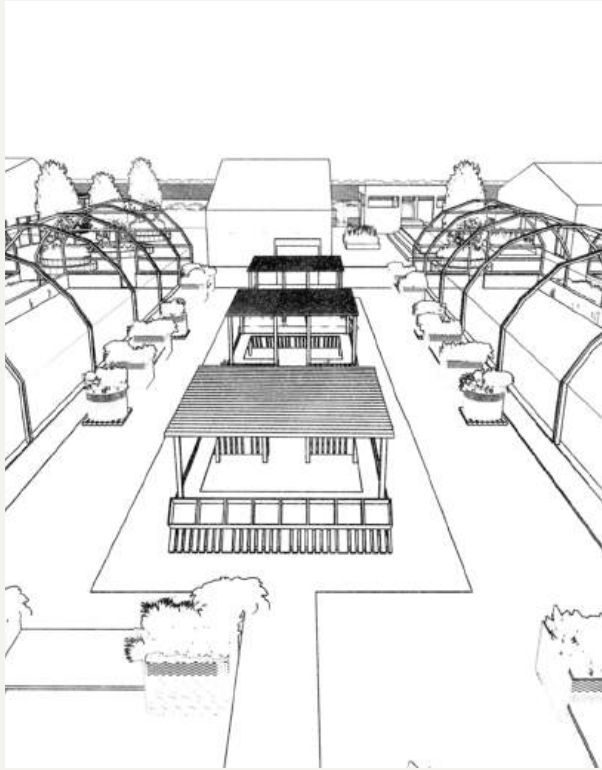
The Creative Landscape Hub at Wolves Lane Centre aims to transform an urban space into a vibrant, sustainable community environment that fosters creativity, skill development, and social cohesion. Inspired by successful global models, this project integrates landscape design, horticulture, and the arts to create a multifunctional space that serves as both an educational resource and a sanctuary for personal growth. The design will prioritise inclusivity, offering hands-on opportunities for individuals from all backgrounds, including at-risk youth, offenders, and local residents, to engage in meaningful work that nurtures both the environment and the community.

# The Creative Landscape Hub:

Cultivating Futures through Design - Horticulture -Community

Year: 2024  
 Team: Surrounding Counties  
 Type: Concept Design  
 Role: Visualization and design  
 Status: Completed





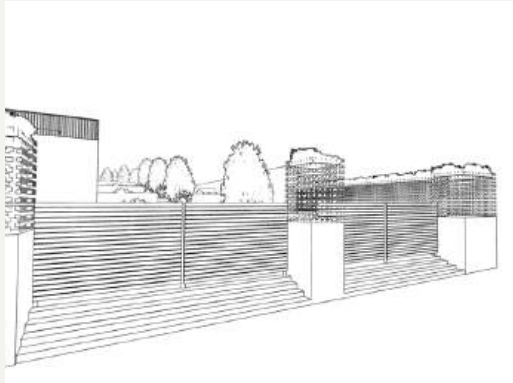
Market

The design of The Creative Landscape Hub will not only enhance the physical environment of Wolves Lane Centre but also cultivate a strong, interconnected community. By blending creativity, sustainability, and social responsibility, the project will reduce crime, improve mental health, and provide pathways to new careers. The Hub will be a testament to the power of design in transforming lives and landscapes alike.



Steps for level change

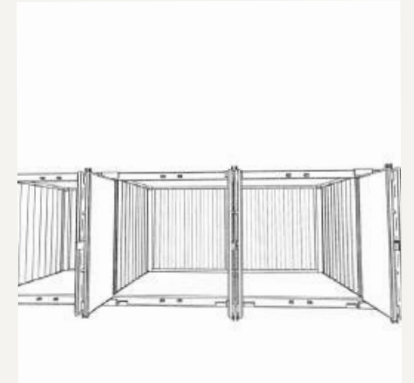
New Entrance



Level Change - New Allotments



Mushroom Farm



## The Creative Landscape Hub:

The design for The Creative Landscape Hub at Wolves Lane Centre is rooted in the vision of creating a multifunctional, inclusive space that serves as a catalyst for social change, environmental stewardship, and personal development. A core principle of the design is inclusivity, ensuring that the space is accessible and welcoming to all, particularly marginalised groups such as at-risk youth, offenders, and individuals from disadvantaged backgrounds. The layout and features of the Hub are designed to be flexible, providing various levels of engagement, from quiet reflection in the therapeutic gardens to active participation in construction and art projects. This inclusivity is essential for fostering social cohesion and offering opportunities for all community members to contribute and benefit.

Year: 2024

Team: Surrounding Counties

Type: Concept Design

Role: Visualization and design

Status: Completed





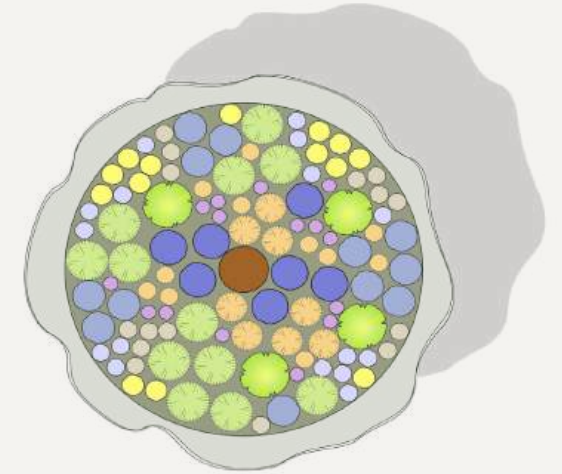
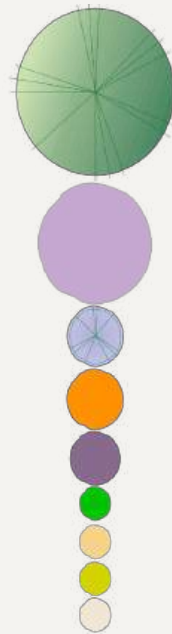
# The Creative Landscape Hub: Flora Mood.

Including edibles in a garden enriches its purpose, connecting people with nature through the act of harvesting and fostering sustainability. This approach transforms the garden into a dynamic, living system that is as productive as it is beautiful.



EDIBLE

- Arbutus unedo 'Compacta'
- Cynara cardunculus
- Rosmarinus officinalis
- Hemerocallis fulva 'Frans Hals'
- Salvia officinalis 'Purpurascens'
- Mentha spicata 'Tashkent'
- Foeniculum vulgare
- Origanum vulgare 'Aureum'
- Daucus carota



The design emphasises seasonal interest and texture, blending grasses, perennials, and structural plants like Anemanthele lessoniana to create a dynamic, layered composition. The planting is robust yet visually soft, offering a naturalistic aesthetic that adapts to changing climates.



RESILIENT

- Sesleria autumnalis
- Aster x frikartii 'Monch'
- Euphorbia ceratocarpa
- Nepeta racemosa 'Walker's Low'
- Anemanthele lessoniana
- Lotus corniculatus
- Foeniculum vulgare
- Verbena bonariensis
- Knautia arvensis





Bench Concept Design



Q.R Scan



A talented group of students, including Nathan, co-founder of Surrounding Counties, had the incredible opportunity to win a competition to design and plant all the benches at the prestigious RHS Hampton Court Flower Show. Working alongside the RHS and such a gifted team was an unforgettable experience, blending creativity and teamwork to bring the project to life.

A.T.C Team



All Things Considered



Bench Planted







Final Destination

The story didn't end there. After the show, the plants found a new home thanks to the Surrounding Counties team, who rehoused them at a local school dedicated to special education needs. The pupils themselves joined in the planting, transforming their school grounds into a vibrant and inspiring space. Their gratitude and enthusiasm made the project all the more rewarding, creating a lasting legacy that continues to grow.

Porerum es venimus



S.C Team

Always smiling



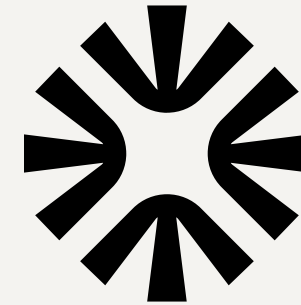
What Inspires you?





Surrounding Counties is a team of passionate and like-minded individuals committed to continual growth—both personally and in the spaces they create. With over 30 years of combined experience in the construction industry and horticultural expertise honed at institutions like the RHS and Kew Gardens, the team brings a unique blend of craftsmanship and botanical knowledge to every project.

As APL-accredited members, their vision goes beyond designing and building gardens; they strive to make a lasting impact on the communities they work in. Whether through thoughtful planting schemes, sustainable practices, or collaborations with local schools and organisations, Surrounding Counties is dedicated to creating gardens that inspire and spaces that enrich lives.



## Surrounding Counties

[Enquiries@surroundingcounties.co.uk](mailto:Enquiries@surroundingcounties.co.uk)