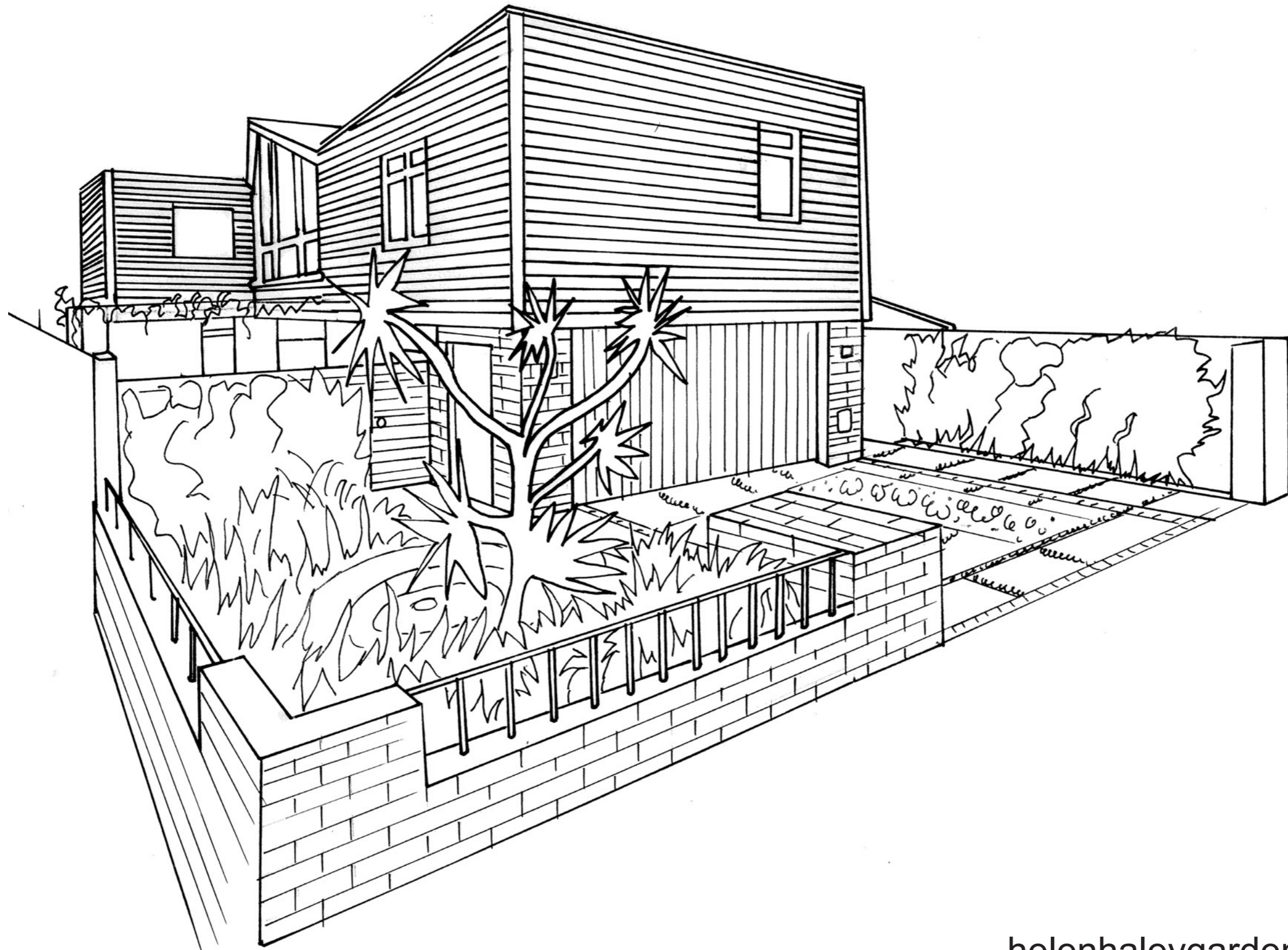


Helen Haley Gardens / Portfolio 2024



helenhaleygardens@gmail.com

About Me



After a decade working as a solicitor, I decided I wanted to follow my passion for plants, and do something more creative with the next part of my working life. As a designer, I want to make gardens that are beautiful, practical and sustainable; that make you want to go outside; and that make the best possible use of the outside space you have.

I love solving the design puzzles that each space brings, and the process of researching and tuning into that space, so that every detail fits perfectly within it. From my legal career I bring attention to detail, excellent communication and project management skills, and the ability to really listen to what clients want.

My horticultural experience includes RHS Level 2 and a year working in the spectacular gardens of Hever Castle in Kent. I know I will never get bored of learning about and working with plants, and outside of work, when I'm not at my laptop or running around after my two kids, you will always find me in the garden.

helenhaleygardens@gmail.com

Education

- Garden Design Diploma / KLC School of Design (Distinction)
- RHS Level 2 Diploma in the Principles and Practices of Horticulture (Commendation)
- Post Graduate Diploma in Law / Legal Practice Course (Distinction) / College of Law, London
- BA Hons. English Literature (First Class) / Durham University

Career

- Hever Castle & Gardens / WRAGS trainee gardener (2022-2023)
- Farrer & Co LLP / Trainee (2006-2008) / Solicitor (2008-2012) / Associate (2012-2017)
- Lucas Alexander Whitley Literary Agency / Assistant to the Children's Book Agent (2001-2004)

Technical Skills

- Vectorworks
- In Design
- Photoshop
- MS Office

Cover image: Hand drawn sketch of the front garden of a coastal residential garden in Worthing. Please see page 7 for more details of this project.

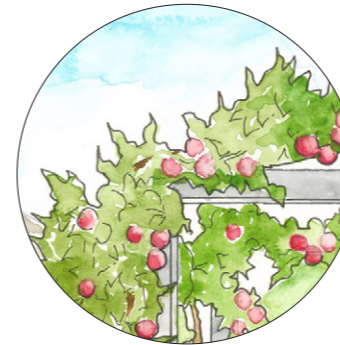
Contents



1. Rural Residential Development
Page 3



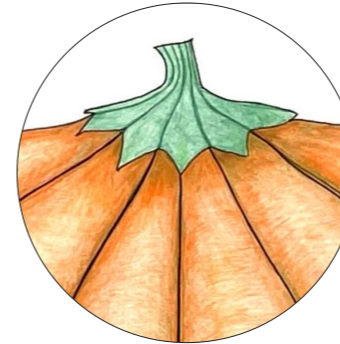
2. Coastal Residential Garden
Page 7



3. Community Garden / Public Realm
Page 8



4. Conceptual Garden
Page 10



5. Chelsea Fringe Proposal
Page 11

1. Rural Residential Development / Saxon Meadow Barns / 'Settlements'

Brief: To redesign four courtyard gardens at the heart of a group of barn conversions in West Sussex, largely occupied by people in later life; and make better use of a recently acquired meadow. In particular, we were asked to keep in mind biodiversity, the rich history of the site, and an imminent new housing development on its boundaries.

Response: The design was inspired by the circular shapes of nucleated settlements as they grow and change, and by the concept of 'palimpsests' (things which are reused but which bear visible traces of their earlier form). Social spaces were drawn out into the meadow, allowing the courtyards to become quieter, more intimate spaces.

Masterplan

Woodland Path

- Inspired by Halnaker hollow way (see top right)
- English native trees, woodland underplanting
- Seating areas along path

Firepit area

- Informal log seating
- Log store and shed
- 'Standing deadwood' for insect habitat

Decking pathway

- Inspired by ancient trackways
- Slowly rises from ground level to 0.5m above the pond for step free access

Cathedral view

- Mown path references historic view through meadow
- Avenue of cherry trees continues the line through the courtyards to the East

Pond area

- Wildlife pond
- Surrounded by bog garden
- 'Vegetated swale' extends to the east
- Winter stem planting
- Makes use of wet conditions in SW corner and mitigates against future flooding

Pavilion area

- A new social space for residents and guests
- New multi-purpose, accessible brick 'pavilion'
- Interlinked seating areas for gatherings of all sizes
- BBQ

Public right of way screened by hedges

Additional parking



Meadow

- Layout inspired by the Trundle (right, second from top)
- New wildflower turf strip to perimeter
- Mown paths lead to central seating area

Utility area

- 'Dead hedge' for wildlife habitat
- Compost bins
- Shed

Washing lines

Decking path and seating areas to South boundary

Design Development

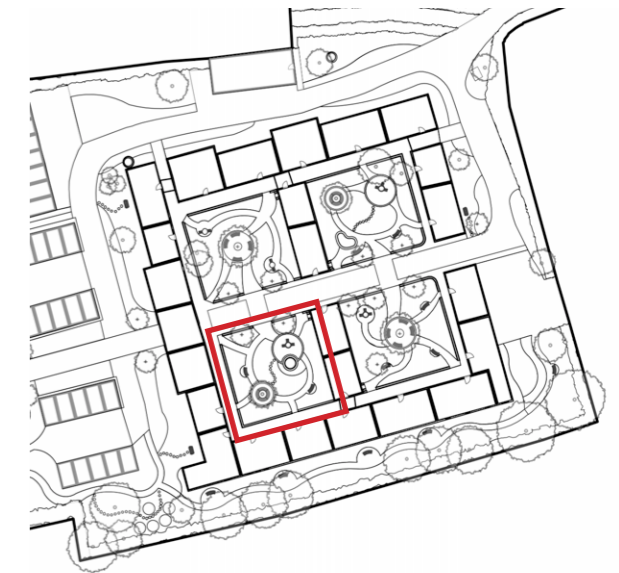


1. Rural Residential Development / Saxon Meadow Barns / 'Settlements'

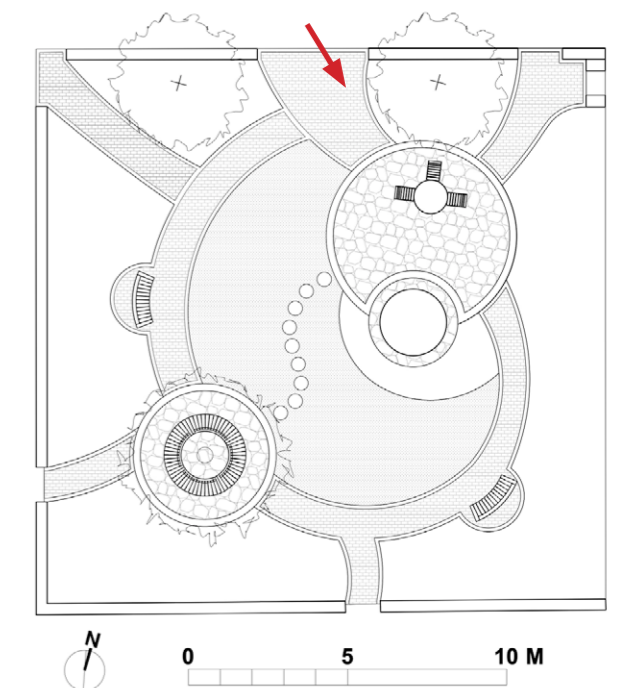
View of the South West Courtyard garden, from the main path



SW Courtyard / Location



SW Courtyard / Plan View



Planting

- Move away from evergreen shrubs towards lighter, more biodiverse planting
- Clover lawn contributes to biodiversity and reduces maintenance

Wildlife Pond

- Existing raised pond sunk into ground for better access for wildlife
- Shape and hard landscaping retains formality, planting brings a wilder element

Hard Landscaping

- Materials retained wherever possible (walls, paved terrace, sub-base)
- New materials reflect architecture and local vernacular (brick pavers, timber)

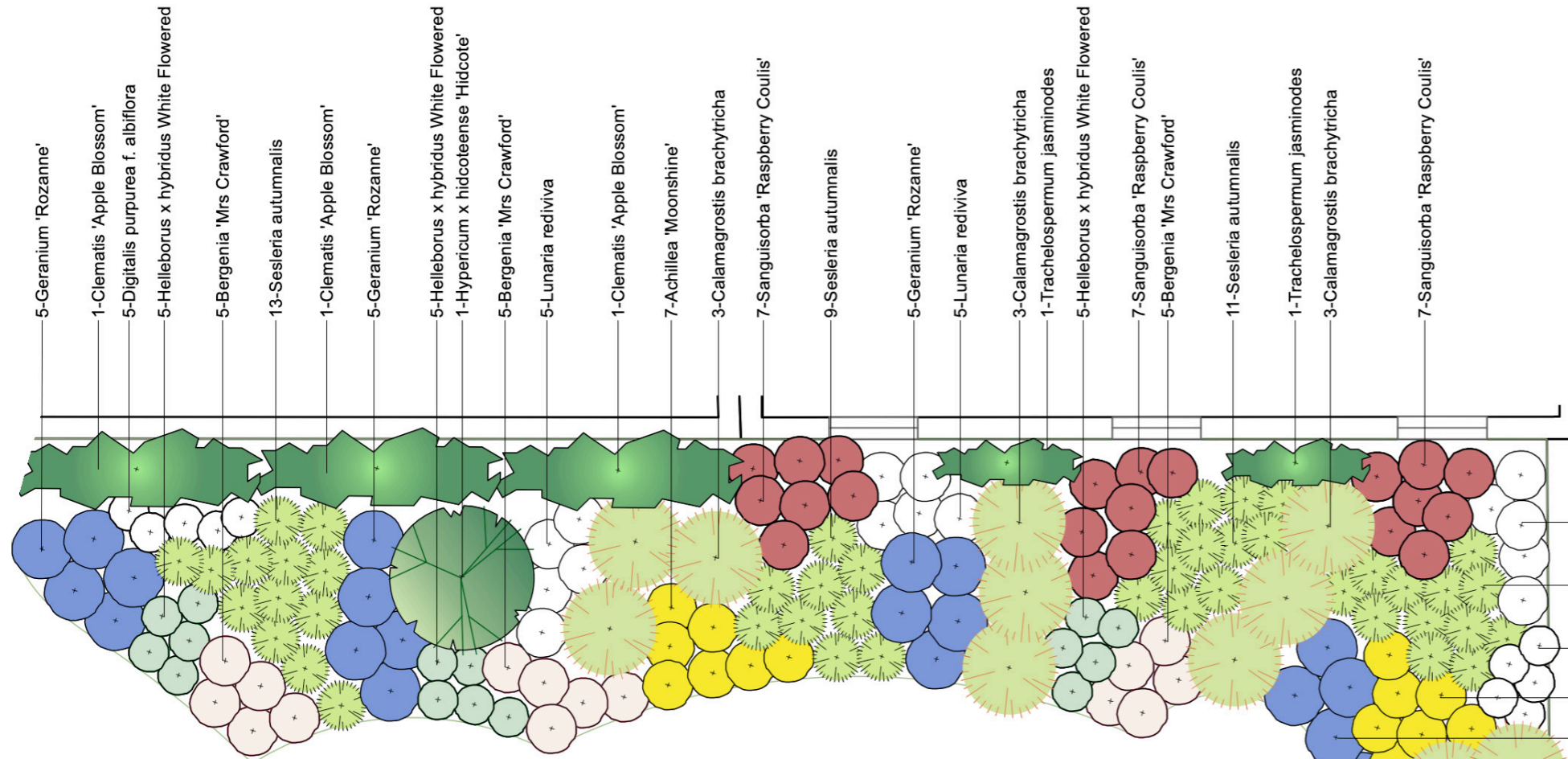
Seating Areas

- As large-group social spaces move to the meadow, courtyards become more intimate and quieter spaces
- Choice of places to sit and relax

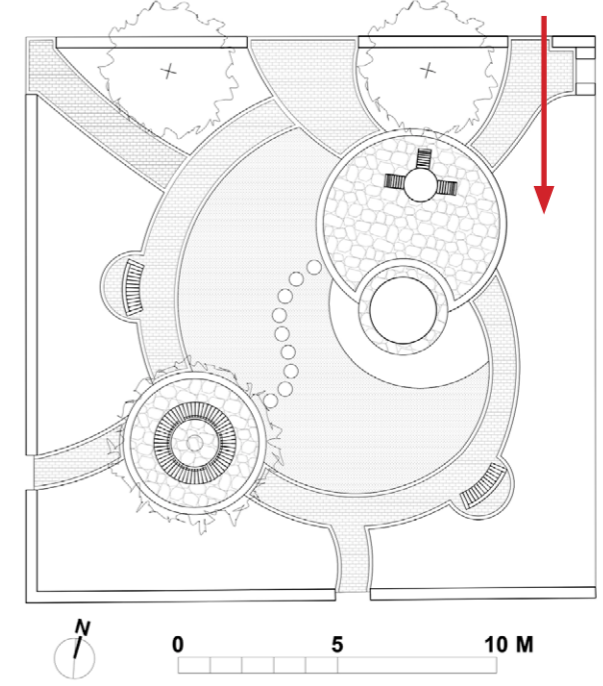
Visual created on Vectorworks and hand rendered in pen and watercolour. Please see final page for a visual of the pavilion in the meadow area of this project

1. Rural Residential Development / Saxon Meadow Barns / 'Settlements'

Example of a Planting Plan for South West Courtyard garden ('Bed C')



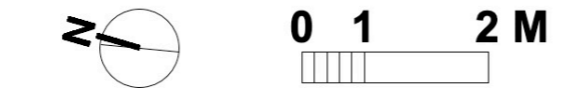
Location of Bed C, SW Courtyard



Summer Planting Palette



Plant Schedule: Bed C			
Category	Latin Name	Qty	Size
Shrubs	Hypericum x hidcoteense 'Hidcote'	2	10L, height >1m
Shrubs	Viburnum x bodnantense 'Dawn'	3	10L, height >1m
Perennials	Lunaria rediviva	15	p9
Perennials	Achillea 'Moonshine'	14	p9
Perennials	Sanguisorba 'Raspberry Coulis'	21	p9
Perennials	Bergenia 'Mrs Crawford'	20	p9
Perennials	Helleborus x hybridus White Flowered	20	p9
Perennials	Geranium 'Rozanne'	25	p9
Grasses	Calamagrostis brachytricha	12	2L
Grasses	Sesleria autumnalis	45	2L
Climbers	Clematis armandii	3	2L, 60cm cane
Climbers	Trachelospermum jasminodes	2	2L, 90cm cane
Biennials	Digitalis purpurea f. albiflora	10	p9
Bulbs	Allium sphaerocephalon	100	Bulbs
Bulbs	Narcissus 'Jack Snipe'	200	Bulbs
Bulbs	Crocus tommasinianus	250	Bulbs
Bulbs	Galanthus nivalis	200	Bulbs



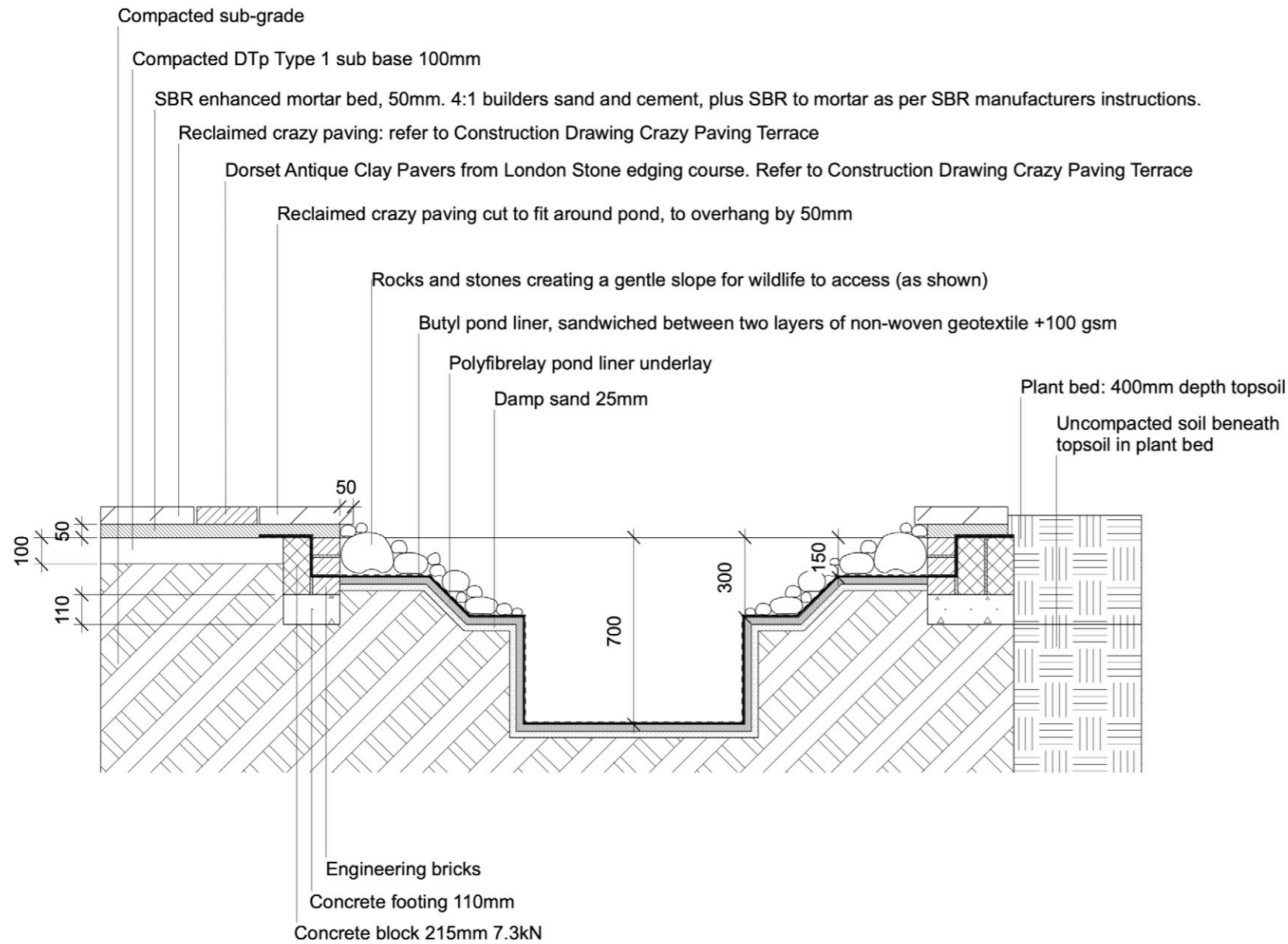
Bulbs Bed C:
 250 x *Crocus tommasinianus* to be planted in clumps between Geranium 'Rozanne' and Achillea 'Moonshine', towards the front of the border
 200 x *Narcissus 'Jack Snipe'* to be planted in clumps between Geranium Rozanne and Achillea Moonshine, towards the back of the border
 100 x *Allium sphaerocephalon* to be planted in small clumps between Sesleria autumnalis and Lunaria rediviva
 200 x *Galanthus nivalis* to be planted in gaps between Bergenia 'Mrs Crawford'

- 5-Lunaria rediviva
- 12-Sesleria autumnalis
- 5-Digitalis purpurea f. albiflora
- 7-Achillea 'Moonshine'
- 5-Geranium 'Rozanne'
- 3-Calamagrostis brachytricha
- 3-Viburnum x bodnantense 'Dawn'
- 5-Bergenia 'Mrs Crawford'
- 5-Geranium 'Rozanne'
- Existing Hypericum
- 5-Helleborus x hybridus White Flowered

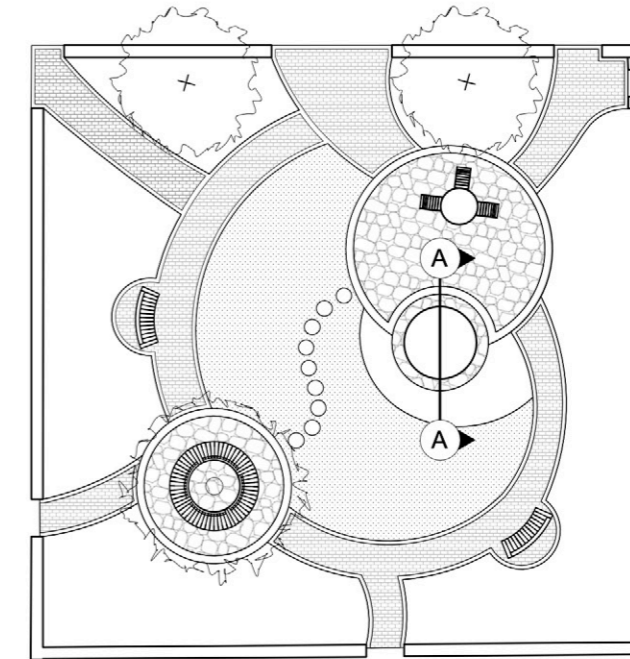
1. Rural Residential Development / Saxon Meadow Barns / 'Settlements'

Example of a Construction Drawing for South West Courtyard garden

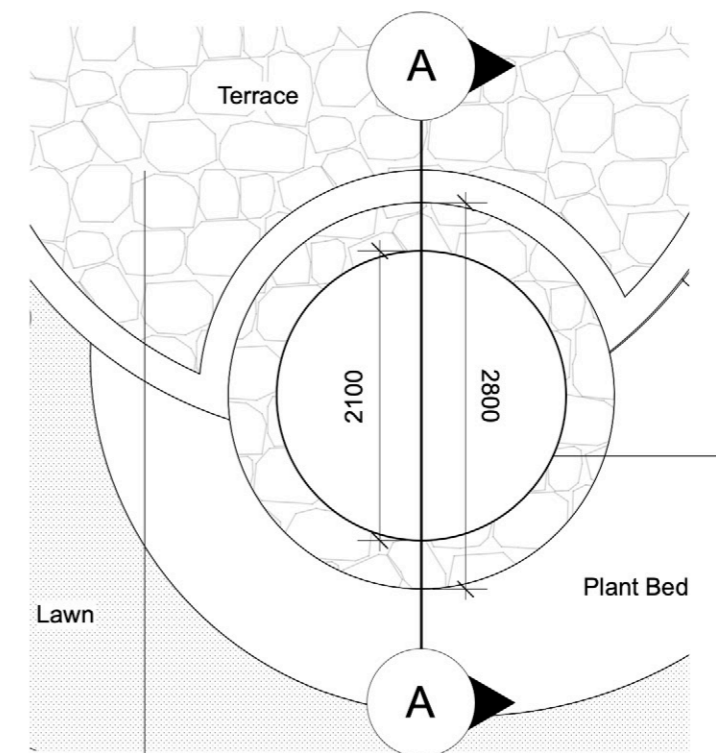
A Section A: Pond
Scale: 1:20



Location of Pond, SW Courtyard



1 Pond: Plan View
Scale: 1:50



Crazy Paving Terrace 1:80 fall towards pond (refer to Construction Drawing Crazy Paving Terrace)

Pond overflows into planting bed via depression in lining below level of crazy paving

2. Coastal Residential Garden / Worthing / 'Gardens are for People'

Brief: To redesign three small garden spaces surrounding a striking modernist house in Worthing, 5 minutes walk from the beach.

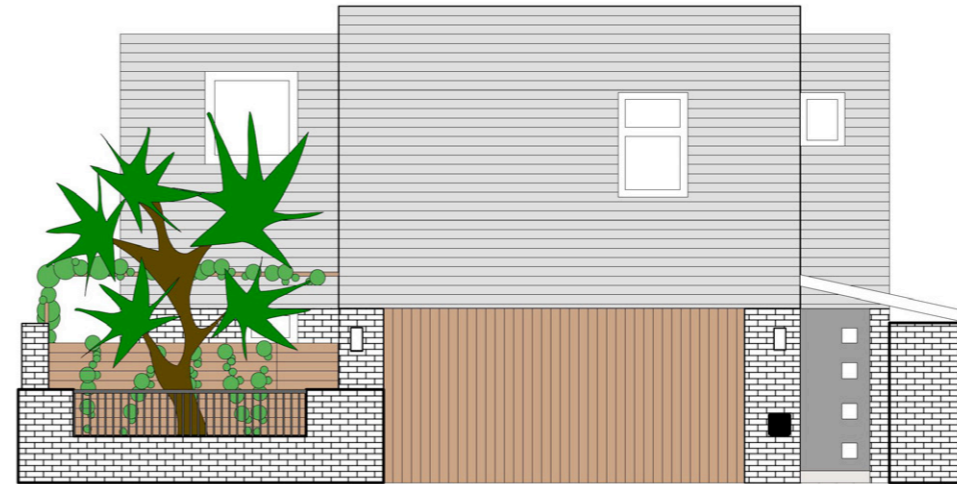
In particular, the design needed to establish a better connection between the three gardens (whilst retaining the individual character of each); to accommodate a separate entrance for AirBnB guests staying in a self-contained annex above the garage; and to improve the 'kerb appeal' of the featureless concrete front garden.

Response: Inspired by the coastal location, and by the mid-century artwork collected by the clients, the design celebrates the distinctive modernist architecture of the house, whilst ensuring it still feels 'at home' in its coastal Sussex setting.

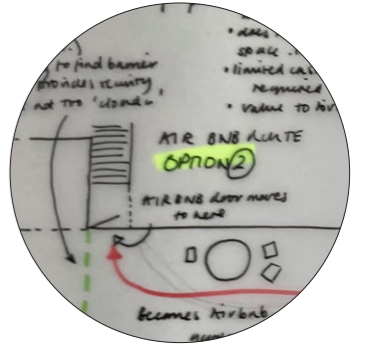
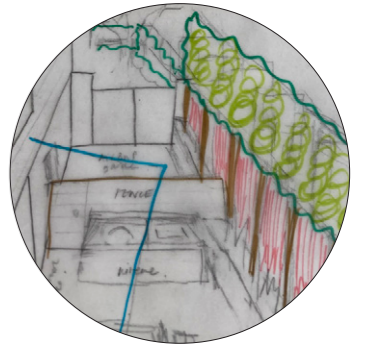
More importantly, the design carefully addresses all of the clients' practical needs (AirBnB entrance, parking, bins, spaces for socialising and play, privacy and security), ensuring that every centimetre of the compact garden spaces is used efficiently.

Please see front cover for a perspective view of the front garden of this project.

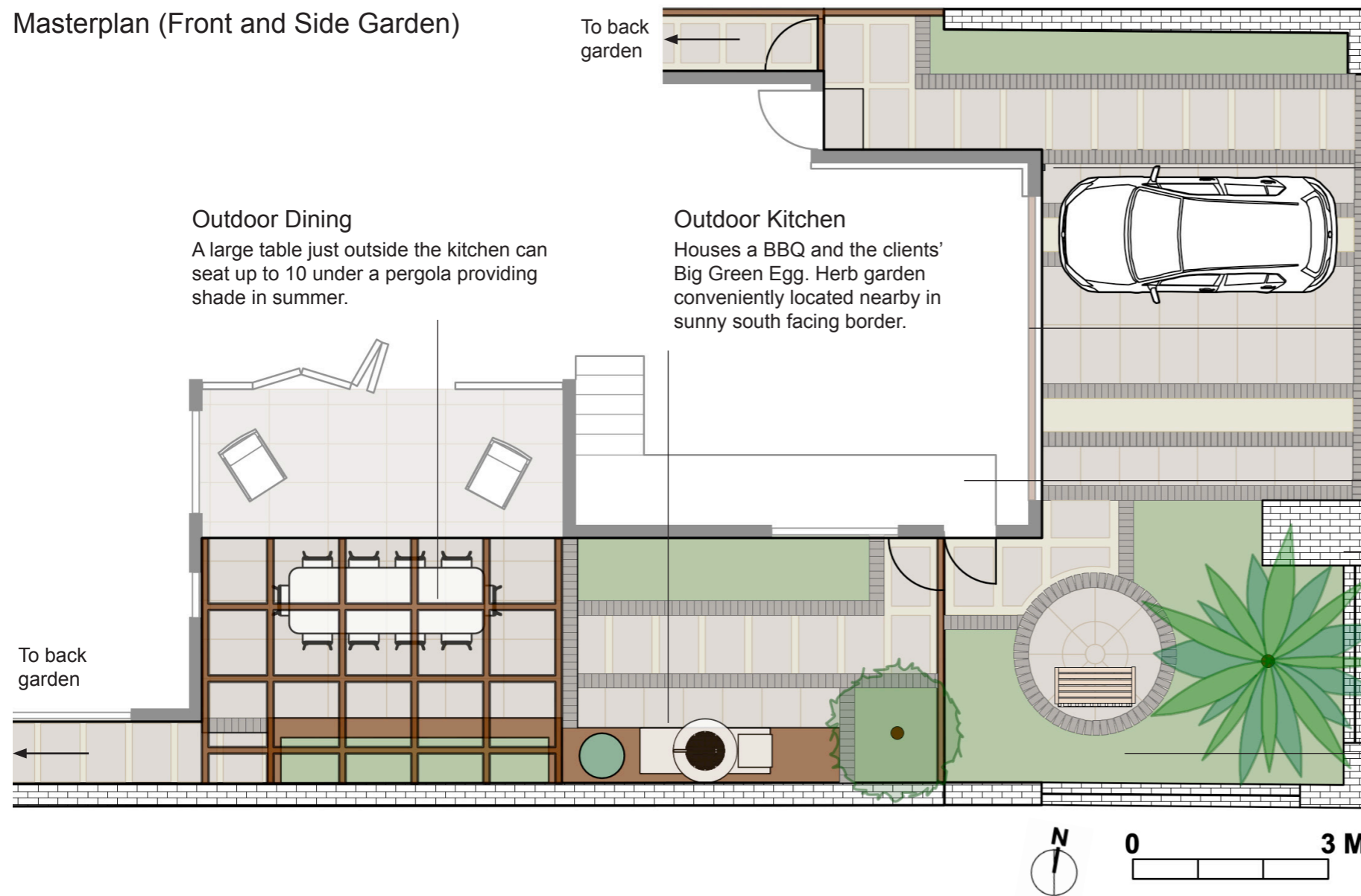
Elevation Showing Road View of Front Garden



Design Development



Masterplan (Front and Side Garden)



Parking and EV Charge Point
Limestone slabs interspersed with gravel and framed with brick pavers provide opportunities for planting, while preserving two parking spaces and access to EV charging point..

Garage
New 'round the corner' sliding door to preserve garage space and accommodate new AirBnB route.

New AirBnB Access
New route steals a sliver of space from the garage to provide a private entrance to the AirBnB above, and preserve the side garden for the owners' private use.

Bins
New brick bin store keeps bins away from front door and out of sight, but still accessible.

Front Garden
New planting provides kerb appeal, low brick wall and railings allow planting to be admired while deterring trespassers. Seating for AirBnB guests.

Outdoor Dining
A large table just outside the kitchen can seat up to 10 under a pergola providing shade in summer.

Outdoor Kitchen
Houses a BBQ and the clients' Big Green Egg. Herb garden conveniently located nearby in sunny south facing border.

To back garden

To back garden

3. Community Garden / Public Realm / Wolves Lane Centre / 'A Patchwork of Ideas'

Brief: To redesign the outside spaces of a horticultural centre and food growing hub in the heart of London, with a special focus on the areas around three new 'eco builds', the entrance area, and three 'sustainable interventions' around the site.

Response: The design was inspired by patchwork quilts and the iconic greenhouses on site, with an emphasis on re-used and sustainable materials, productive planting and flexible, hard-working community spaces. 'Sustainable interventions' included a micro-forest, a green-roof shelter, and a new boundary hedgerow.

Design Development

Masterplan

Lookout for wildlife

- Grass roof timber shelter
- Communal fire pit
- Standing dead wood and dead hedges for habitat

Micro-forest

- Inspired by the Miyawaki Forest at the Horniman Museum
- Absorbs 30 times more CO2 than conventional tree planting

Accessible path

- Gabion terracing to the steep slope
- Gently sloping path, gradient never > 1:12

Pop-up market

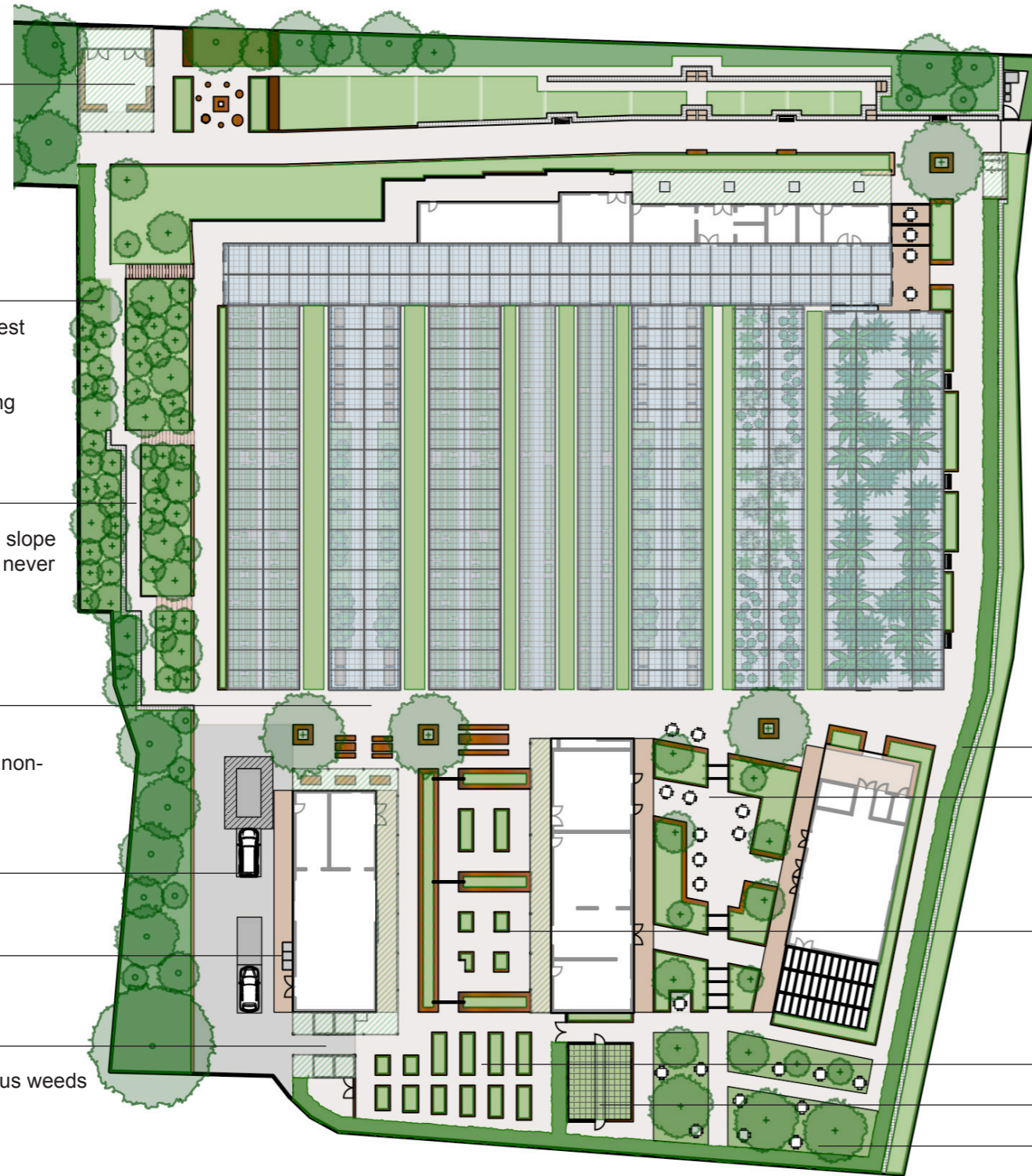
- Seating, shade and shelter
- Can be used for teaching on non-market days

Parking (including disabled parking)

EV charge points

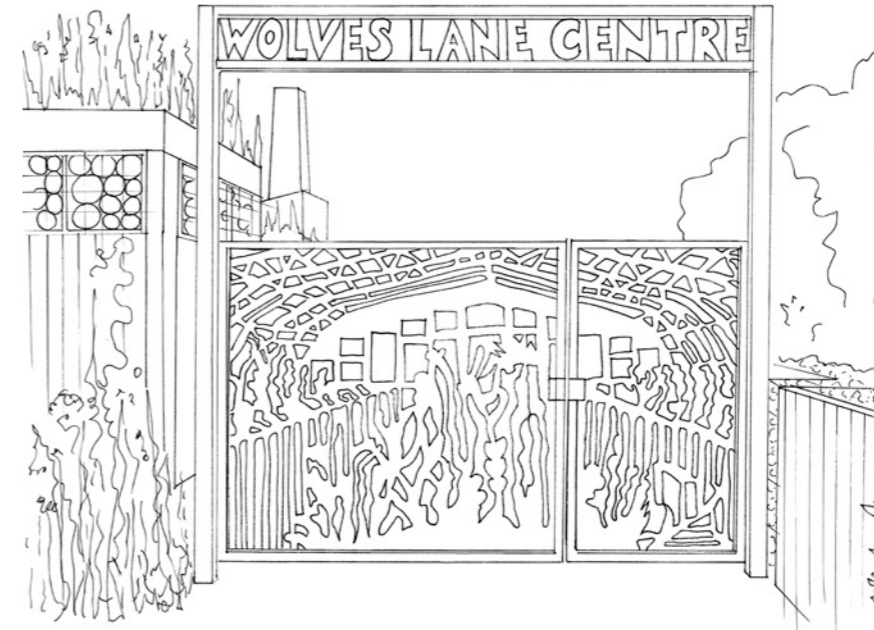
Composting facilities

- Includes hot bins for pernicious weeds
- Covered space for deliveries



Entrance area

- New ironwork gates (below) inspired by the cactus house, providing both security and kerb appeal
- New seating area screened from road by steel pergola and raised beds with medicinal planting



Boundary hedgerow

Community space

- Forest Garden planting in raised beds defines a new, flexible community space
- Please see page 9 for visual

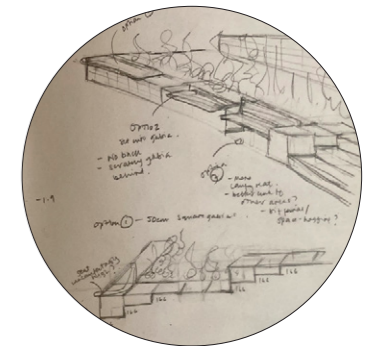
Social and therapeutic horticulture

- Two 'outdoor classrooms'
- Specially adapted raised beds for people with physical disabilities

Community growing space

Fruit cage

Community orchard

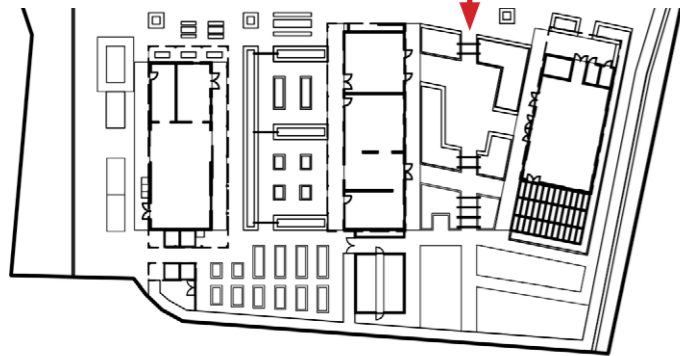


3. Community Garden / Public Realm / Wolves Lane Centre / 'A Patchwork of Ideas'

View of the new community space, looking from the South end of the greenhouses



Location



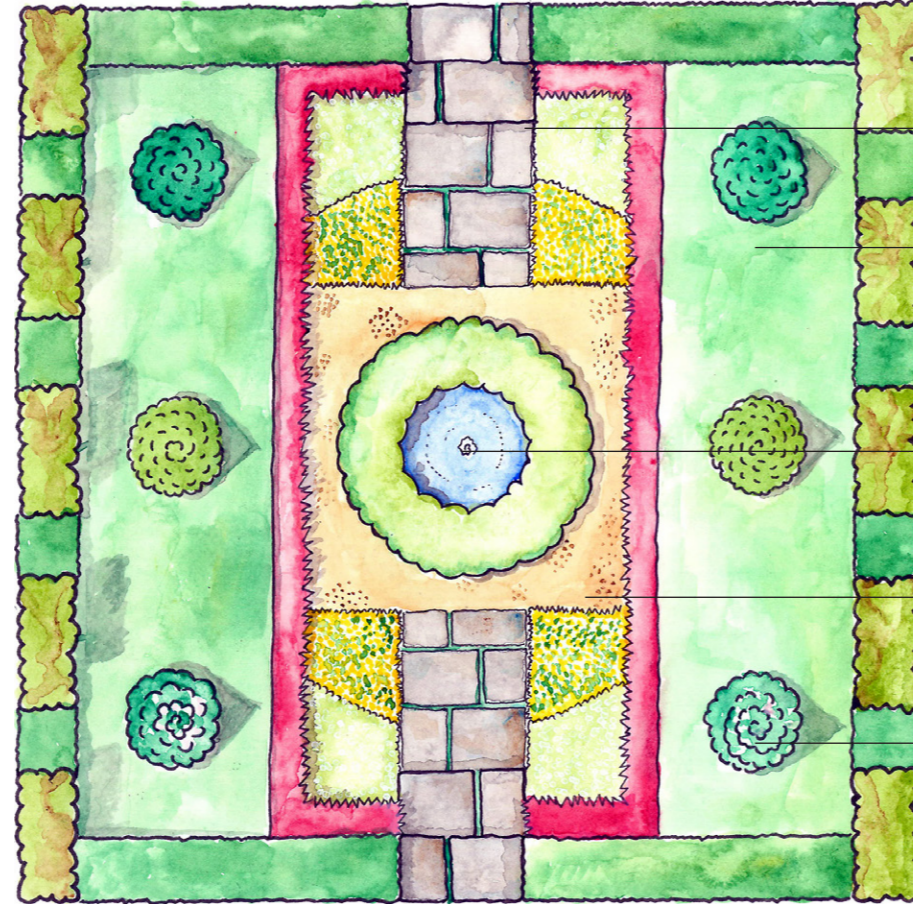
4. Conceptual Garden / Hampton Court Flower Show / 'The Vagabonds' Ball'

Brief: To design a conceptual show garden for the Hampton Court Flower Show, in the 'Global Impact Garden' category.

Response: My design asks whether a formal, historic garden (like those at Hampton Court Palace) can ever be recreated in a sustainable way; and aims to challenge the distinction between 'ornamentals' and 'weeds' ('vagabond' plants).

The garden takes inspiration from the cone-shaped topiary in the Privy Garden (far right, top), reminiscent of dancers at a formal ball.

The floor plan is based upon the Pond Garden (far right, second from top), but exchanges typical planting for a rogue's gallery of 'vagabond' plants, and traditional landscaping techniques and materials for more sustainable ones.



Plan View

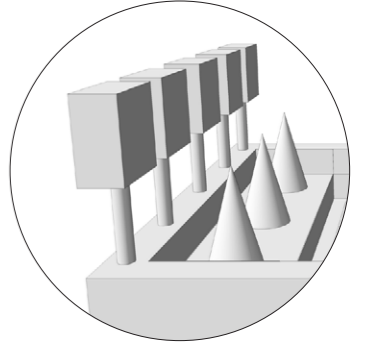
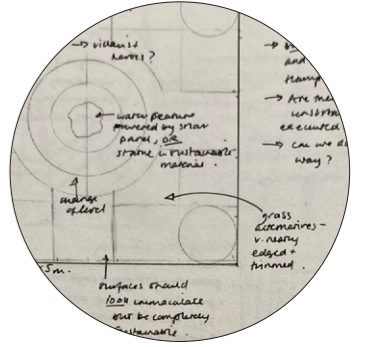
- Reclaimed Yorkstone slabs
Set into sand for easy relocation after the show.
- Raised Clover lawn
Created using the spoil from excavation of the water feature. Retained using reclaimed metal sheeting, to avoid using concrete. Clover lawn for greater biodiversity and reduced water use.
- Water Feature
Shallow pond with solar-powered fountain, surrounded by planting, encourages wildlife whilst preserving a formal aesthetic.
- Gravel
Traditional material in formal gardens, but also permeable and easy to reuse after the show.
- Obelisks with 'vagabond' climbers
Reclaimed metal obelisks support climbing plants usually regarded as 'weeds' (Common Ivy, Bindweed, Brambles), clipped and tied to retain formal aesthetic.

Perspective View



- Pleached Sycamore trees
Clipped and trained to resemble the formal pleached trees surrounding the Pond Garden.
- 'Vagabond' bedding
'Weeds' such as Dandelions, Daisies, Rosebay Willowherb and even Ground Elder are planted in the same orderly formations as traditional 'bedding', highlighting their potential beauty and excellent sustainability credentials.
- Native mixed hedging
Replaces Buxus or similar monocultural hedging typical of formal gardens. Specially grown and trained to retain formal shape.

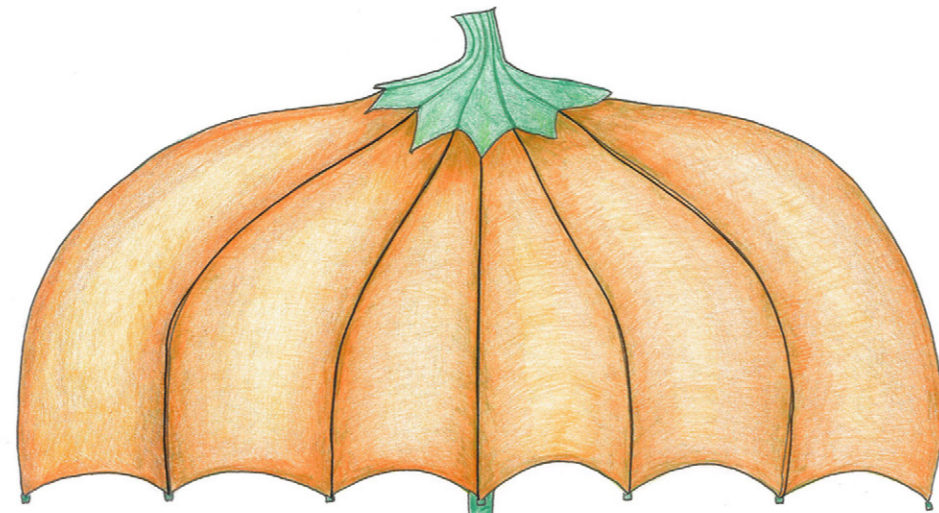
Design Development



5. Chelsea Fringe Proposal / 'The Pumpkin Factory'

Brief: To develop a proposal for the Chelsea Fringe Festival, an alternative garden festival run alongside the RHS Chelsea Flower Show, which aims to get more people involved in horticulture in a fun and quirky way.

Response: A mobile pumpkin seed planting 'factory' constructed from an upcycled chest of drawers, intended to engage young gardeners by introducing them to the magic of propagation.



HANDLE:
Chest sits on adapted luggage trolley, enabling it to be wheeled around.

UMBRELLA:
Can be folded down and clipped to back of chest in transit.

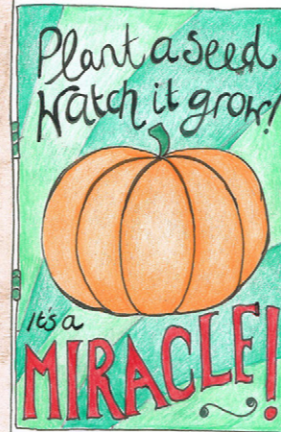
1. INSTRUCTIONS
Tear off perforated roll. On one side, step by step planting and care instructions. On the other, simple diagram of germination and pumpkin life cycle.

How does your pumpkin grow?
How to grow your pumpkin

1 2 3

2. CONTAINER
Pull down compostable 10cm pot from holes cut in top drawer, as per coffee cup dispenser.

BOARDS:
Can be folded back against side of chest in transit.



3. COMPOST
Stored in bottom drawer. Scoop out with child-sized trowels.

4. SEED
Press the button in third drawer down to dispense a seed in the hatch below.

5. WATER
Water in using tap fitted with a sprinkler rose on side of chest. Water tank concealed inside fifth drawer.

6. LABEL
Using labels found in mini-drawer and pens hanging beside.

Design Development





helenhaleygardens@gmail.com