

PORTFOLIO – MATTHEW GILBERT



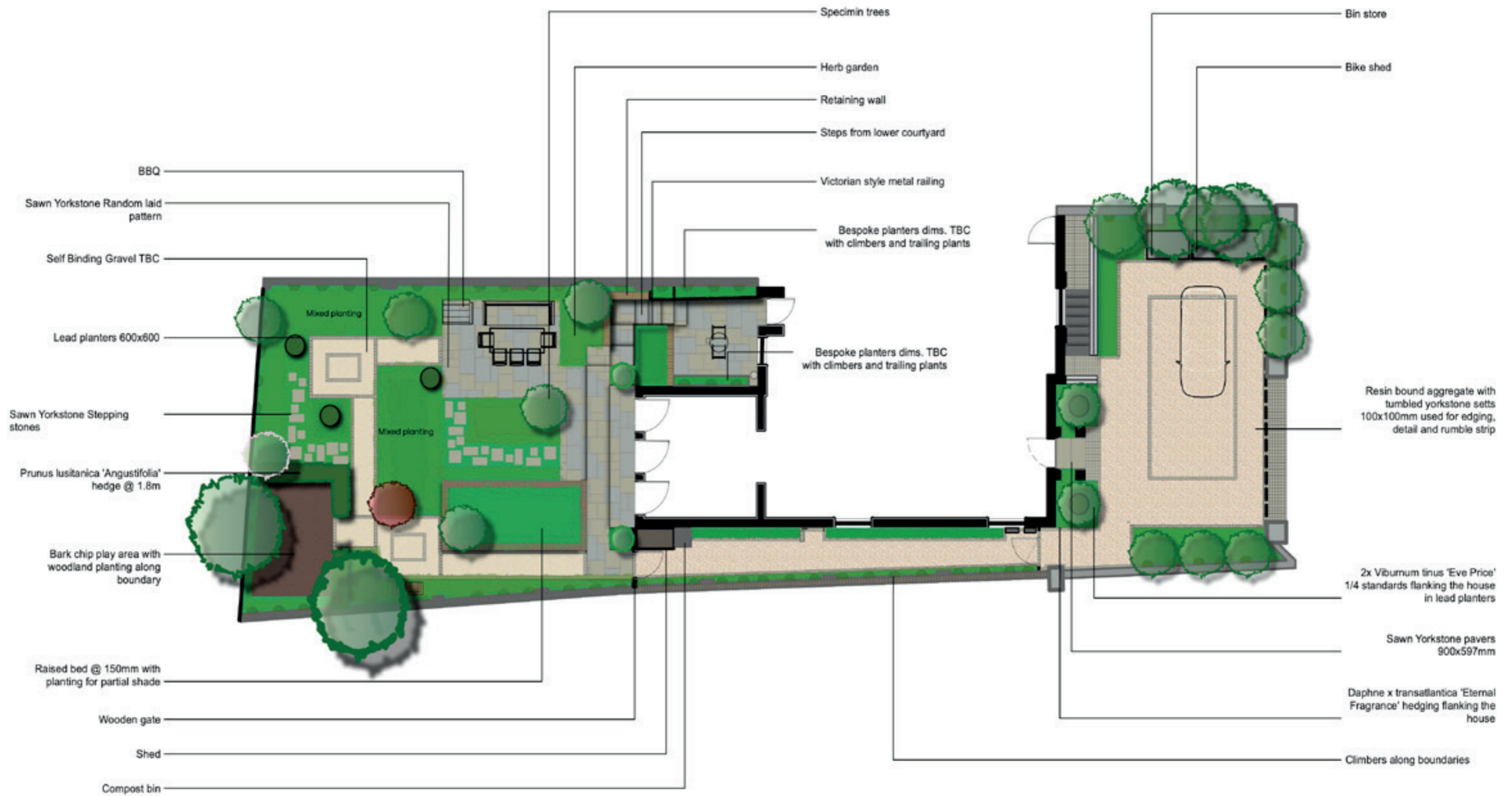
maglandscapes@outlook.com
07794569283

CONTENTS

1. A Residential Garden
3. A Therapeutic School Garden, Quadrangle
6. A Shady School Garden, Courtyard
9. A Historic Garden Masterplan
10. Isokon Building Forecourt
12. Isokon Building Penthouse Roof Terrace
14. Raised Bed Detail
15. A Lighting Plan
16. A General Arrangement Plan
17. Construction Drawings
19. Planting Plans
21. Planting Elevation



RESIDENTIAL GARDEN



Scale: 1:100
Made using vectorworks





View from extensions doors in Summer
Mediums used: Watercolour paint and pencils, Photoshop



QUADRANGLE



Scale: 1:100
Made using vectorworks



Matthew Gilbert • Garden and Landscape Design
maglandscapes@outlook.com
07794569283

SCHOOL GARDEN

QUADRANGLE

Mediums used: Sketchup, Photoshop



QUADRANGLE

Right: View across courtyard from the left during the day in Summertime.

Bottom: View across courtyard from the picnic area on the right during the day in Summertime



Here I used sculpture in a way to lead the eye, so I placed three concrete spheres of varying sizes for the art department to get their hands on and get the kids involved.

Trees encircle the quad to create a cloister, giving shelter from prevailing winds from the coast.

Mediums used: Sketchup, Photoshop

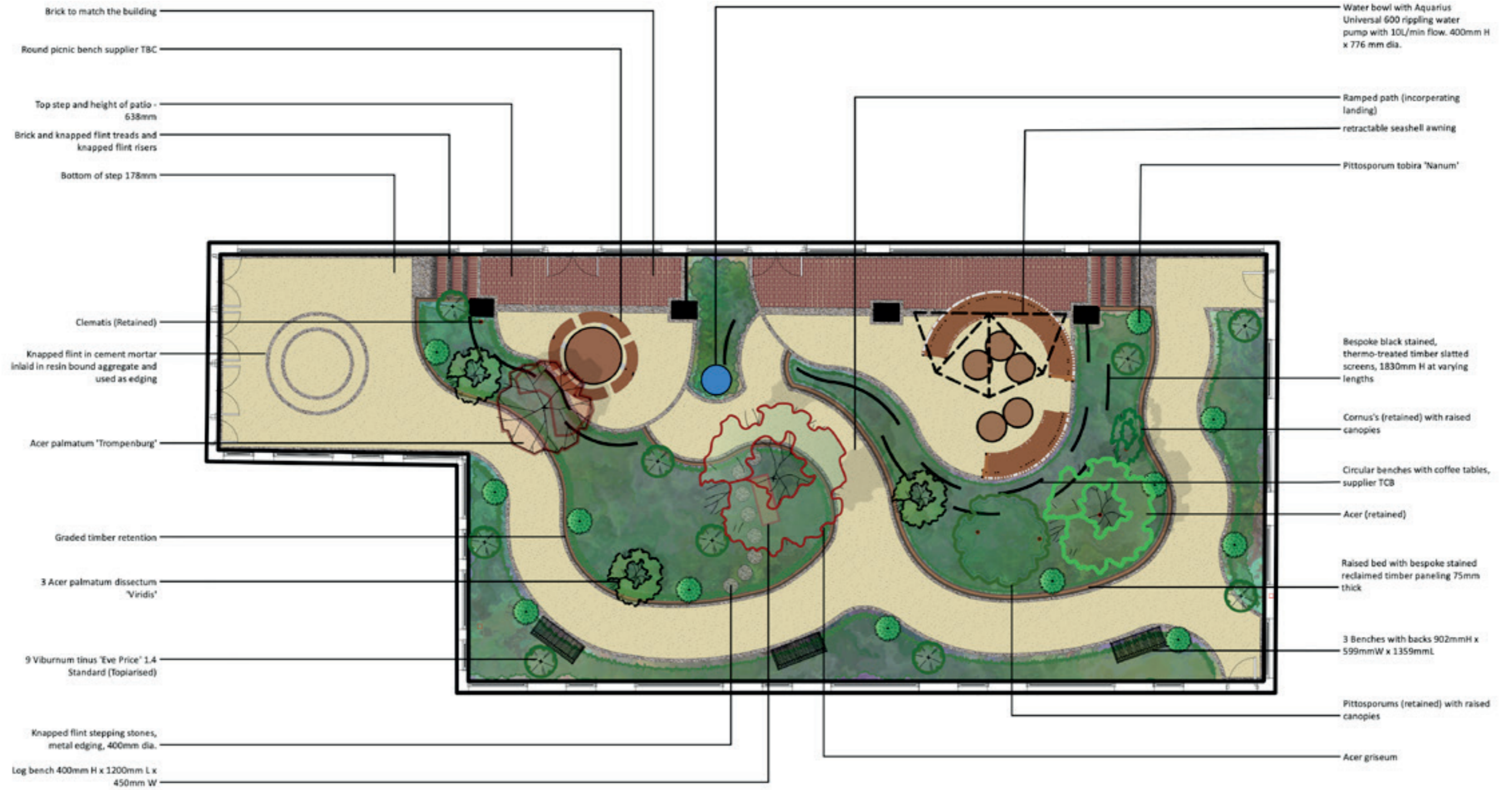


SCHOOL GARDEN

COURTYARD

A Shade Garden

2 Masterplan Courtyard
Scale: 1:75



Scale: 1:75

Made using vectorworks



Matthew Gilbert • Garden and Landscape Design
maglandscapes@outlook.com
07794569283

SCHOOL GARDEN

COURTYARD

Mediums used: Sketchup, Twinmotion, Photoshop



Matthew Gilbert • Garden and Landscape Design
maglandscapes@outlook.com
07794569283

SCHOOL GARDEN

COURTYARD

This space is designed to be shared by both the the staff room and the S.E.N.D classroom, providing privacy for both.

I achieved this by using slatted black, staggered timber screens of varying heights to allow for views when walking around, but privacy when seated.

Right: View down path with water during the day in Springtime

Bottom: View across both central beds during the day in Springtime



A central bed is kept at the same level as the terrace above, while the other grades down with the wheelchair accessible ramp from the S.E.N.D classroom to provide three-dimensional interest.

Planting is lush for semi-shade

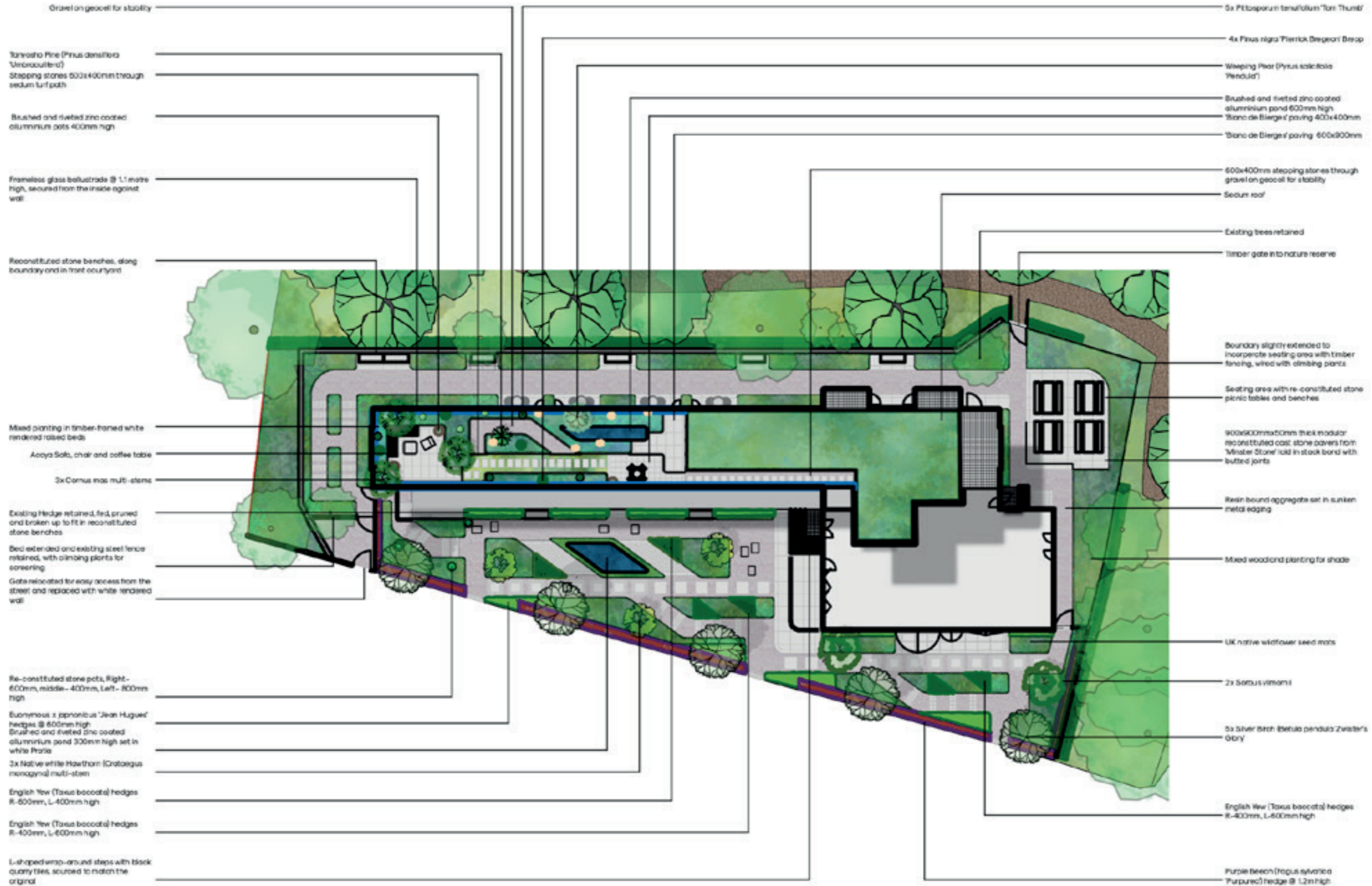
Mediums used: Sketchup, Photoshop



HISTORIC GARDEN

ISOKON BUILDING

MASTERPLAN



Scale: 1:200

Made using vectorworks





View through forecourt at dawn during the Summer

Mediums used: Sketchup, Twinmotion, Photoshop

HISTORIC GARDEN ISOKON BUILDING FORECOURT



Matthew Gilbert · Garden and Landscape Design
maglandscapes@outlook.com
07794569283

HISTORIC GARDEN

ISOKON BUILDING FORECOURT



Left: View towards stairwell during the day

Right: View towards garage during the day in the Summer

Bottom: View across forecourt early evening in the Summer

Mirroring the shapes and angles of the architecture onto the ground in this North London grade two listed block of flats, demonstrates the importance of anchoring a building to it's surroundings and paying homage to the style it was created in, without creating a pastiche.

Mediums used: Sketchup, Twinmotion,
Photoshop



Matthew Gilbert • Garden and Landscape Design
maglandscapes@outlook.com
07794569283

HISTORIC GARDEN

ISOKON BUILDING PENTHOUSE ROOF TERRACE

A balmy summers evening on the Isokon roof,
with a view to the forecourt below

Mediums used: Sketchup, Twinmotion,
Photoshop



HISTORIC GARDEN

ISOKON BUILDING PENTHOUSE ROOF TERRACE

Right: Penthouse view across water at dusk in the Summer

Bottom: View back to penthouse during the day in the Summer



The levels in this penthouse roof terrace provided an interesting challenge, met by using steps and sloping beds in different angles. The water feature and paths are aligned with views from the penthouse doors and windows.

The water feature has a false bottom, making it light weight while giving the appearance of a larger body of water.

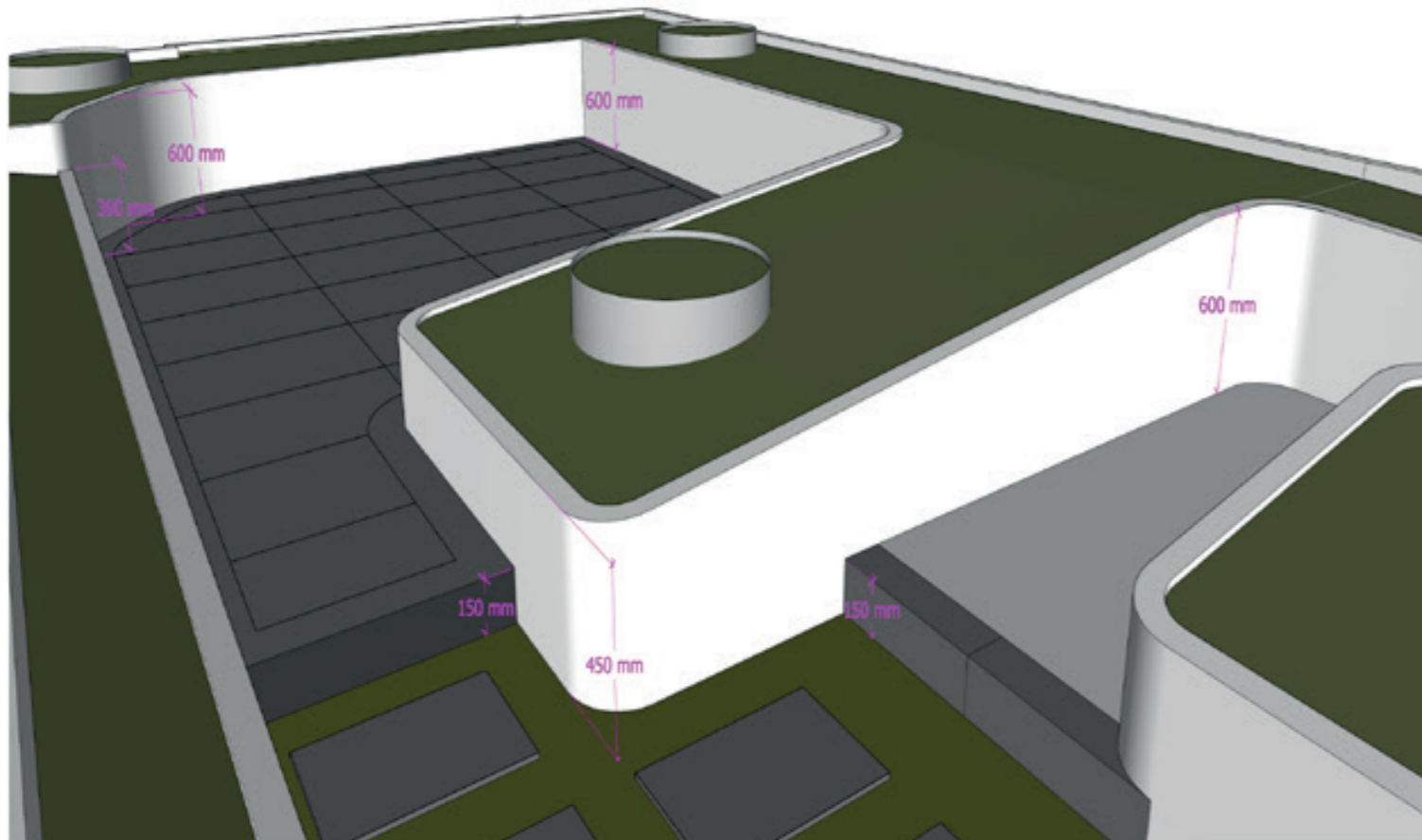
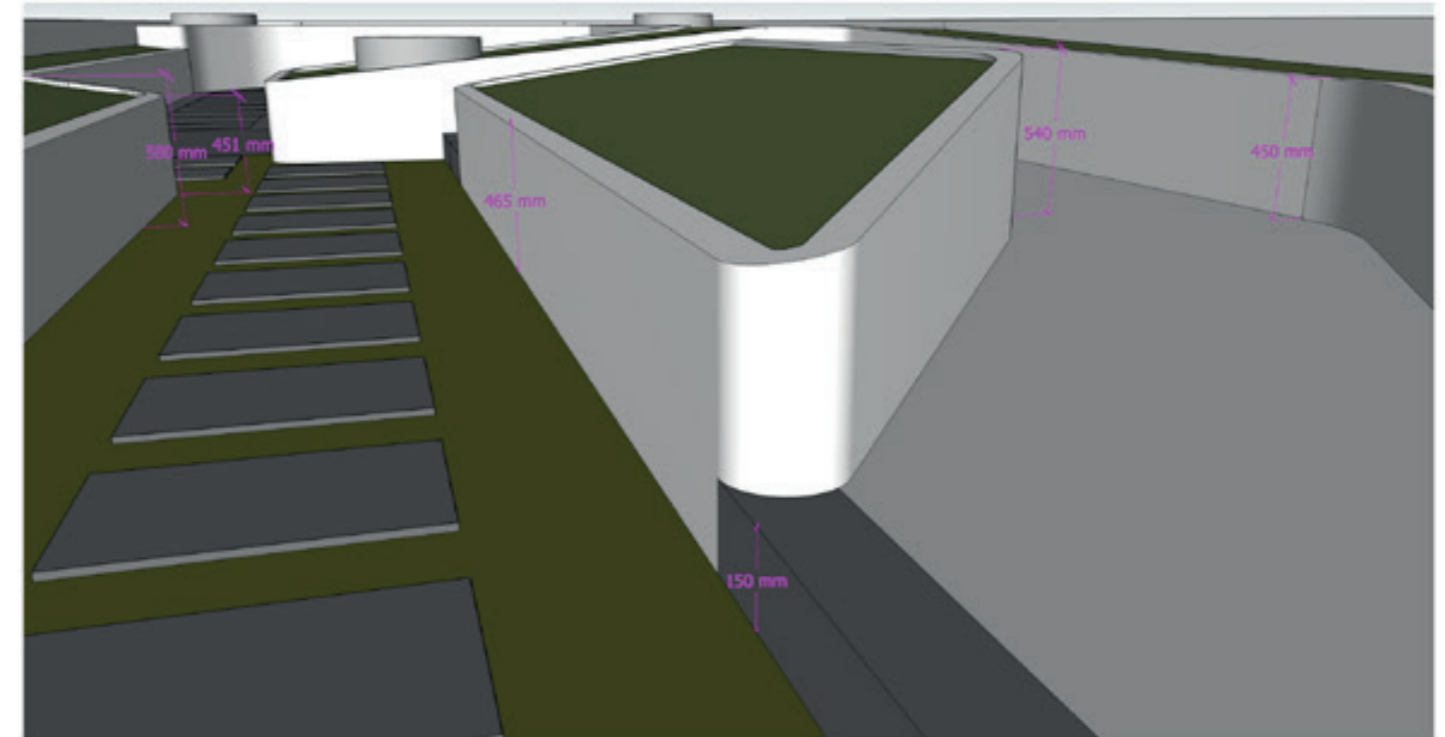
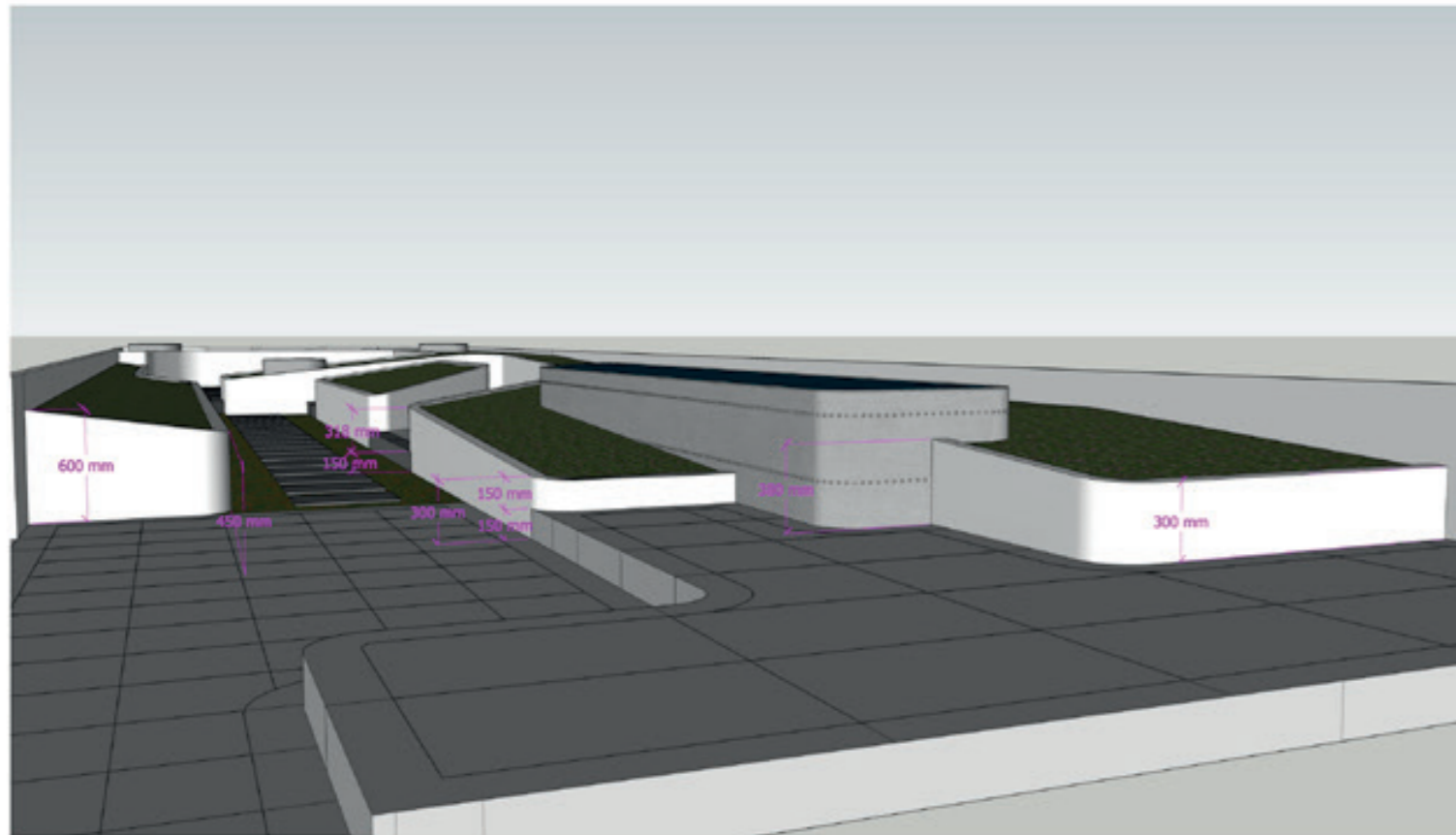


Mediums used: Sketchup,
Twinmotion, Photoshop



Matthew Gilbert • Garden and Landscape Design
maglandscapes@outlook.com
07794569283

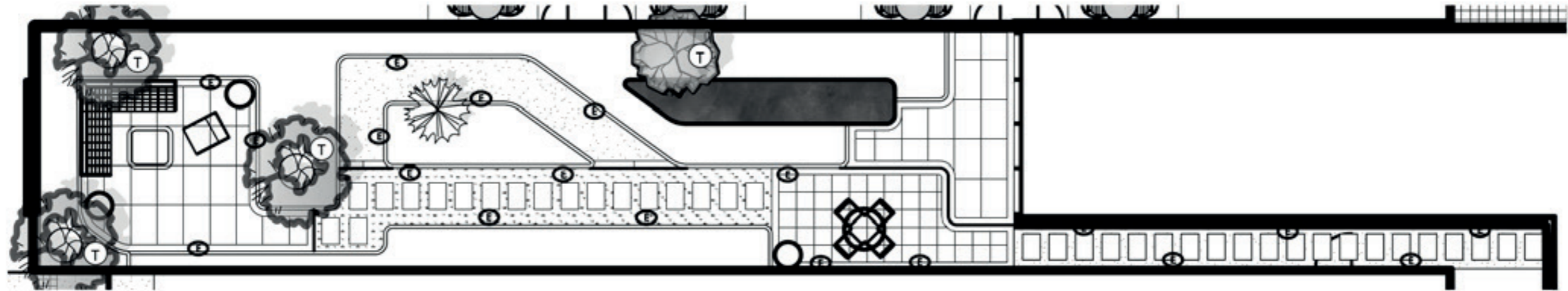
RAISED BED DETAIL



Freestanding, lightweight 75mm wide planting bed walls can be constructed by cladding a timber frame with cement boards on both sides to create the shape and thickness. The inside is then painted with a waterproofing paint and a silicon render applied to the exterior to the desired finish and colour.

An alternative method would be to use a 'Jesmonite' specialist to create an eco-friendly freeflowing, modular structure to be 'bolted' together on site.

1 **Lighting Plan**
Scale: 1:50



E

Hunza slim Recessed solid eyelight light x 18 No.
50 lumens
2700K,
IP 66,
60° beam angle
Stainless steel body



T

Hunza spike spot with adjustable head x 4 No.
3000K
Ip 67
240 lumens
60° beam angle for Pyrus salicifolia
38° beam angle for Cornus mas
Stainless steel body



Lighting effects

SHEET NOTES

Do not scale this drawing
All dimensions in millimetres.
All dimensions indicative only.
All dimensions must be checked on site and any discrepancies verified with the landscape designer,
Refer to architect's information for all architectural elements.
Refer to engineer's information for all engineering elements.
Any discrepancies between the drawings and site conditions be brought to the attention of the contract administrator and/or landscape designer for review.
Retain existing levels within tree root protection areas.

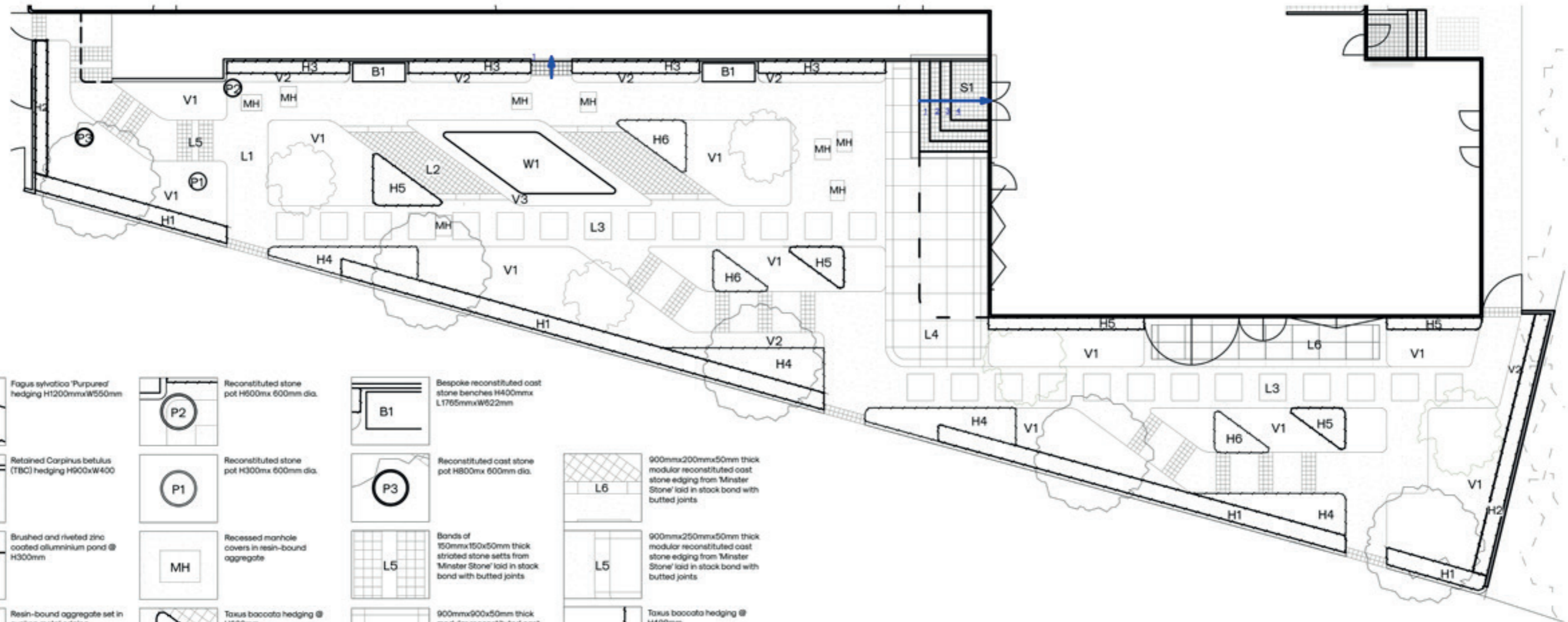


Made using vectorworks, Sketchup and Twinmotion



Matthew Gilbert • Garden and Landscape Design
maglandscapes@outlook.com
07794569283

GENERAL ARRANGEMENT PLAN



	<i>Fagus sylvatica</i> 'Purpurea' hedging H1200mmxW550mm		Reconstituted stone pot H600mx 600mm dia.		Bespoke reconstituted cast stone benches H400mmx L1765mmxW622mm		900mmx200mmx50mm thick modular reconstituted cast stone edging from 'Minster Stone' laid in stack bond with butted joints
	Retained <i>Carpinus betulus</i> (TBC) hedging H900xW400		Reconstituted stone pot H300mx 600mm dia.		Reconstituted cast stone pot H800mx 600mm dia.		900mmx250mmx50mm thick modular reconstituted cast stone edging from 'Minster Stone' laid in stack bond with butted joints
	Brushed and riveted zinc coated aluminium pond @ H300mm		Recessed manhole covers in resin-bound aggregate		Bands of 150mmx150x50mm thick striated stone setts from 'Minster Stone' laid in stack bond with butted joints		900mmx900x50mm thick modular reconstituted cast stone paving from 'Minster Stone' laid in stack bond with butted joints
	Resin-bound aggregate set in sunken metal edging		<i>Taxus baccata</i> hedging @ H600mm		900mmx900x50mm thick modular reconstituted cast stone paving from 'Minster Stone' laid in stack bond with butted joints		<i>Taxus baccata</i> hedging @ H400mm
	Mixed wildflower seed mats		150mmx150x50mm thick striated cast stone setts from 'Minster Stone' with 250mm edging laid in stack bond with butted joints		L-shaped wrap-around steps with black quarry tiles, sourced to match the original		<i>Pratia pendunculata</i> 'Alba' around water feature
	900mmx900x50mm thick modular reconstituted cast stone paving from 'Minster Stone' set in resin-bound aggregate		<i>Euonymus x japonicus</i> 'Jean Hugues' hedging @ H600mm		<i>Fagus sylvatica</i> 'Purpurea' hedging H1200mmxW550mm		<i>Vincetoxicum</i> 'Gertrude Jekyll' laid in narrow beds under hedging
							900mmx600x50mm thick modular reconstituted cast stone paving from 'Minster Stone' laid in stack bond with butted joints

SHEET NOTES

Do not scale this drawing
 All dimensions in millimetres.
 All dimensions indicative only.
 All dimensions must be checked on site and any discrepancies verified with the landscape designer.
 Refer to architect's information for all architectural elements.
 Refer to engineer's information for all engineering elements.
 Any discrepancies between the drawings and site conditions be brought to the attention of the contract administrator and/or landscape designer for review.
 Retain existing levels within tree root protection areas,



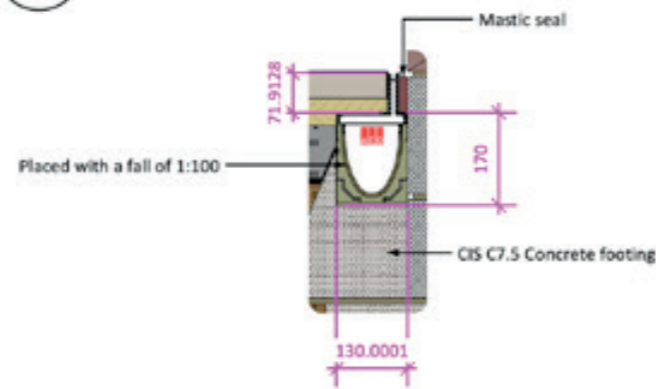
Scale: 1:100 Made using vectorworks



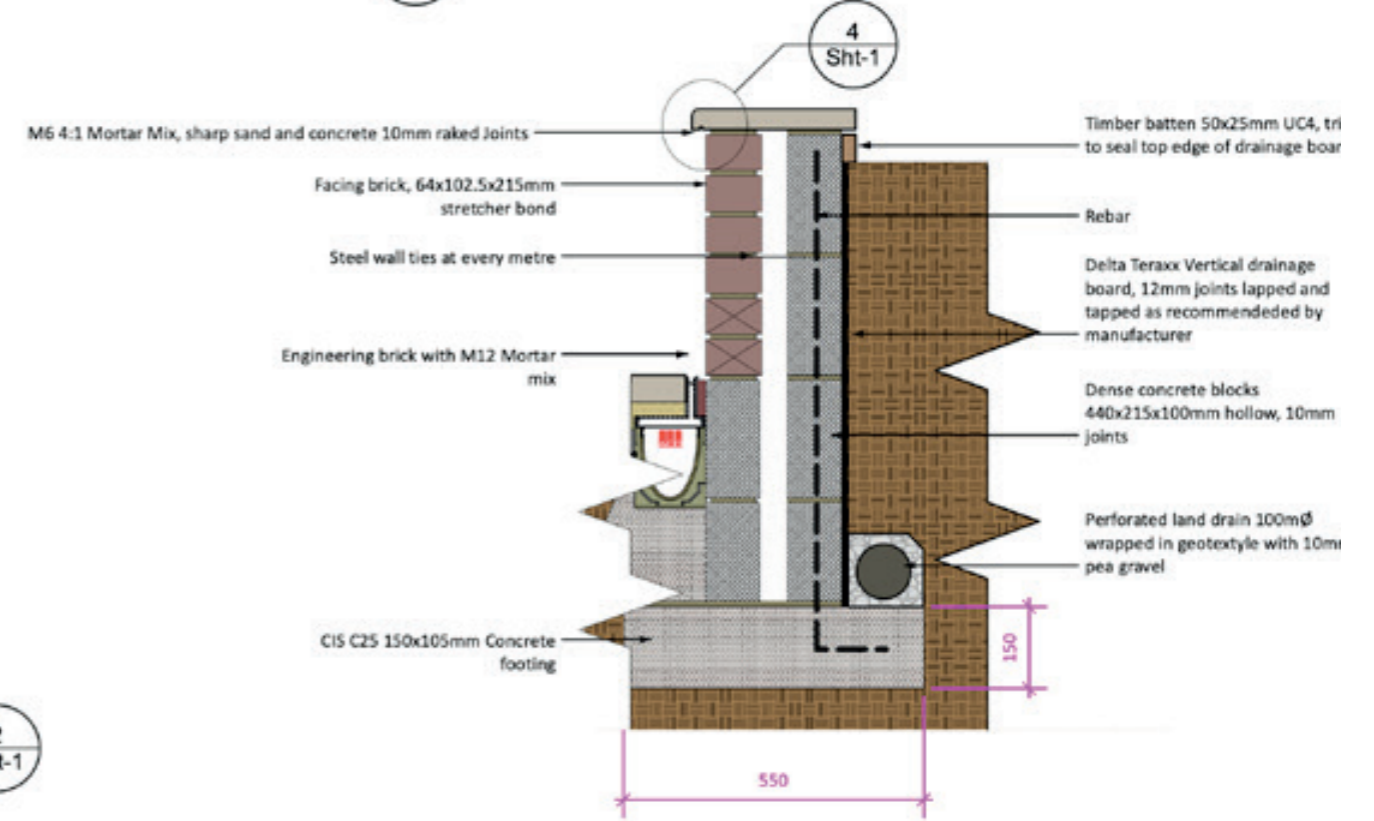
Matthew Gilbert • Garden and Landscape Design
 maglandscapes@outlook.com
 07794569283

DRAWINGS SHOW DESIGN INTENT ONLY, DETAILED DESIGN INCLUDING ALL SERVICES BY SPECIALIST, TO LANDSCAPE DESIGNER'S APPROVAL

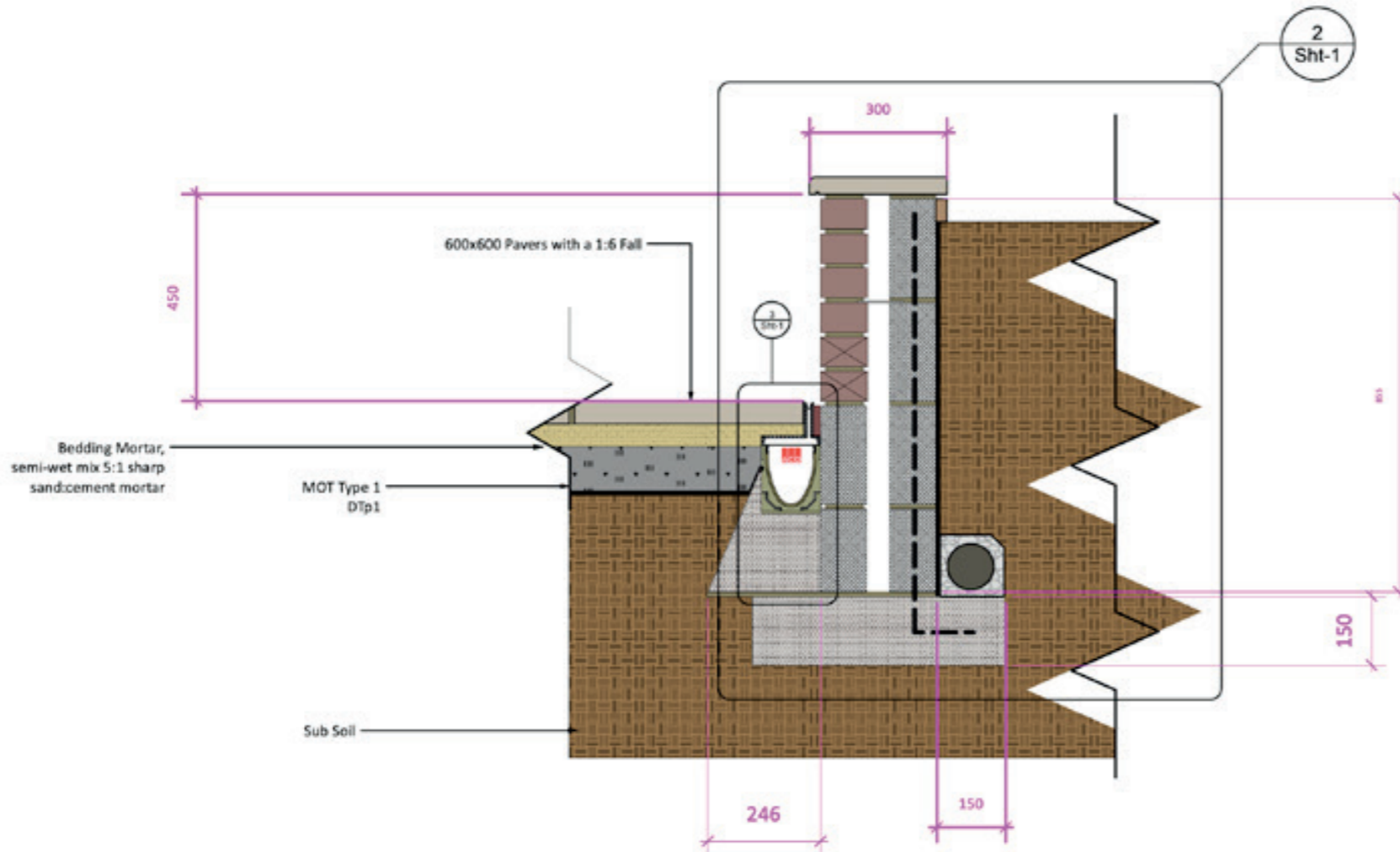
3 Aco Brickslot 100 With K100 - 2,670kg Wheel Load
Scale: 1:10



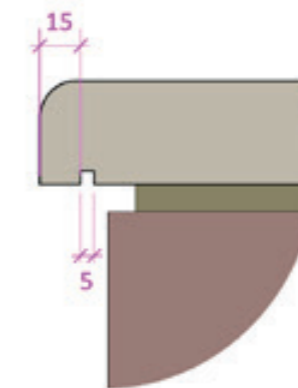
2 Retaining Wall
Scale: 1:10



1 Aco Drain Against Retaining Wall
Scale: 1:10



4 Half Bullnose with drip groove
Scale: Half Actual Size



Made using vectorworks

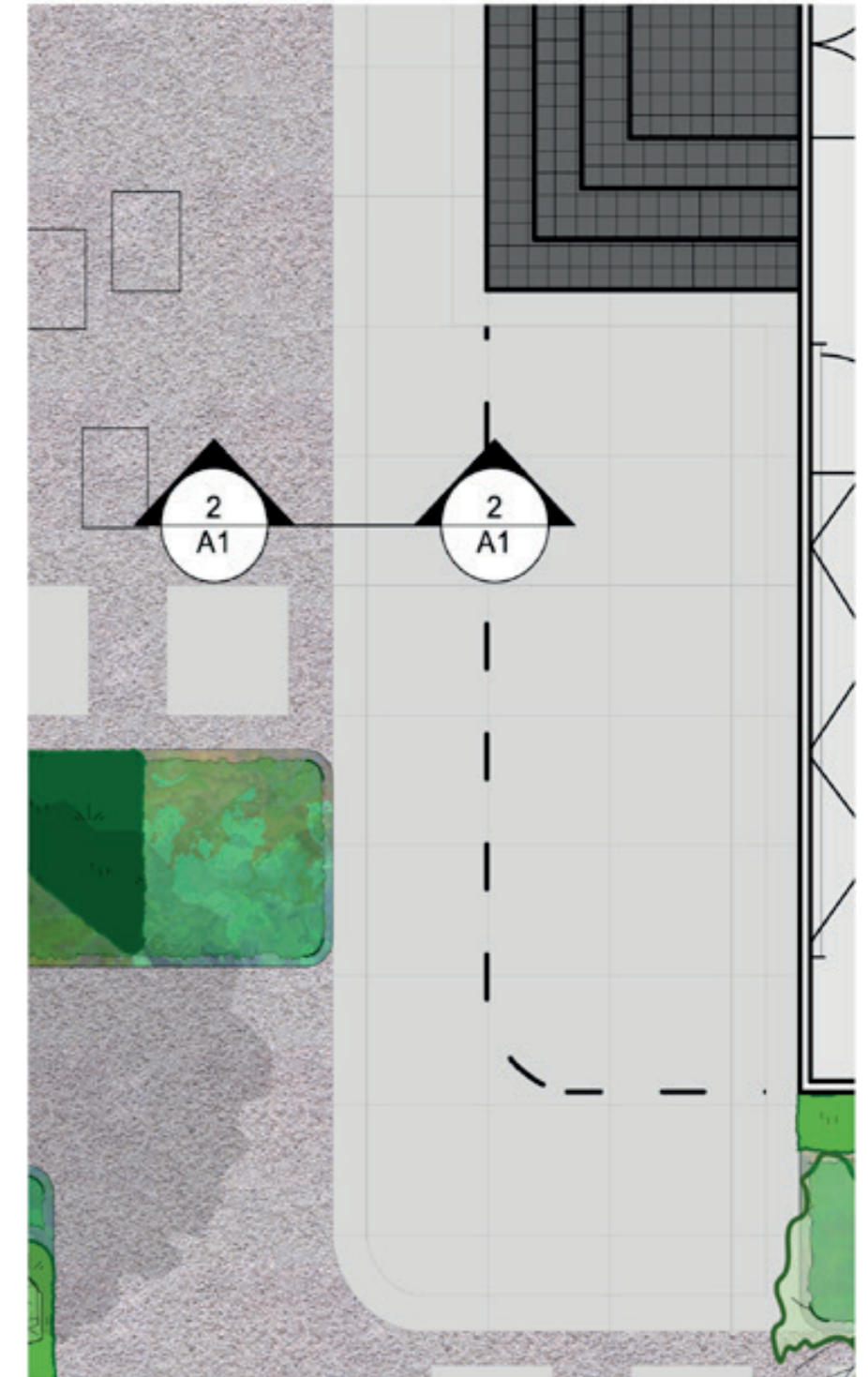
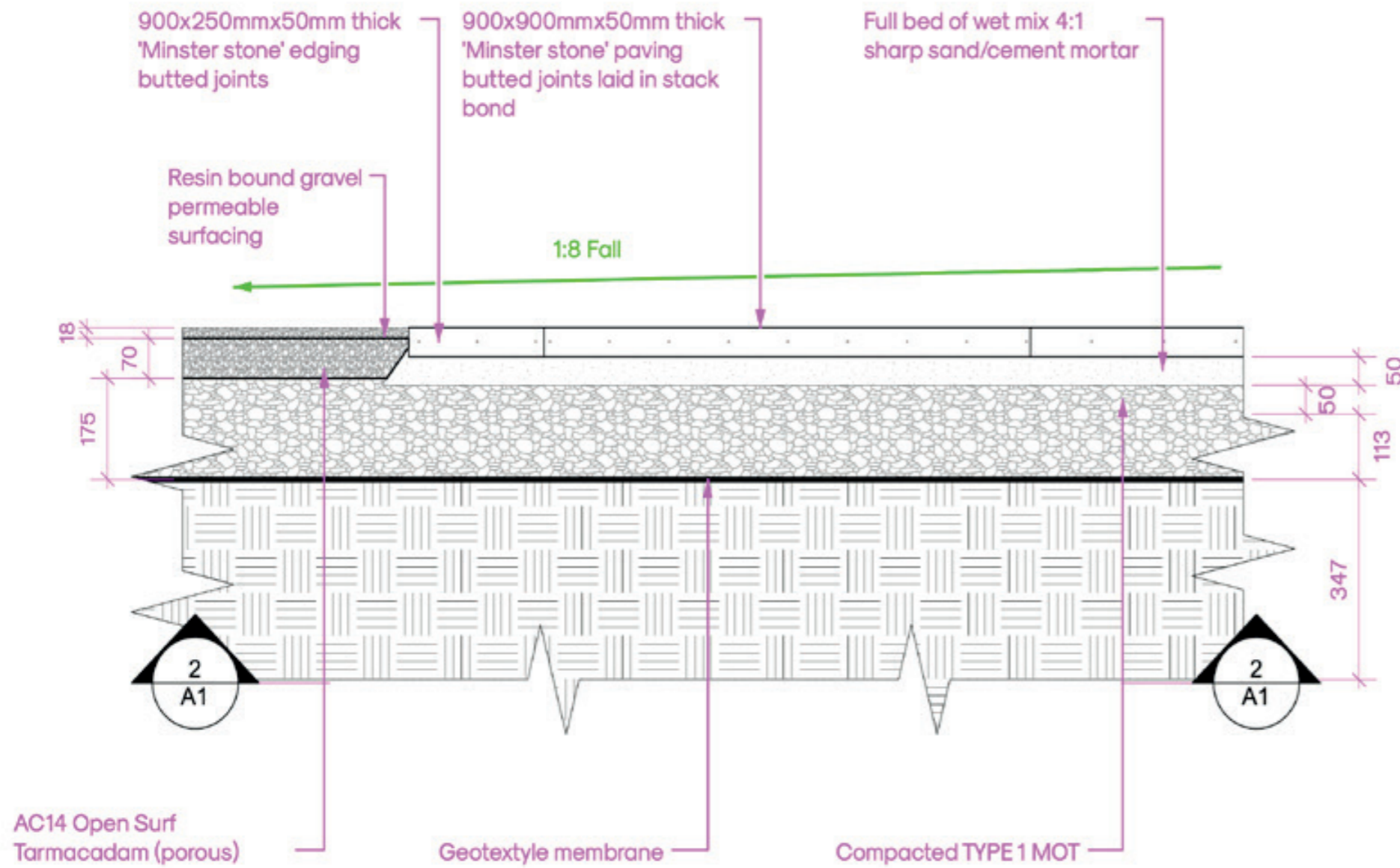


CONSTRUCTION DETAIL

DRAWINGS SHOW DESIGN INTENT ONLY, DETAILED DESIGN INCLUDING ALL SERVICES BY SPECIALIST, TO LANDSCAPE DESIGNER'S APPROVAL

3 **Locator**
Scale: 1:50

1 **Paving & Resin-Bound Aggregate Section Detail**
Scale: 1:10



Made using vectorworks



Approx. £230/m2 supplied and fitted. No Profit.

Allowances for skips/hire (wet cutters/table saw/electronic paving slab lifter (£250 each)

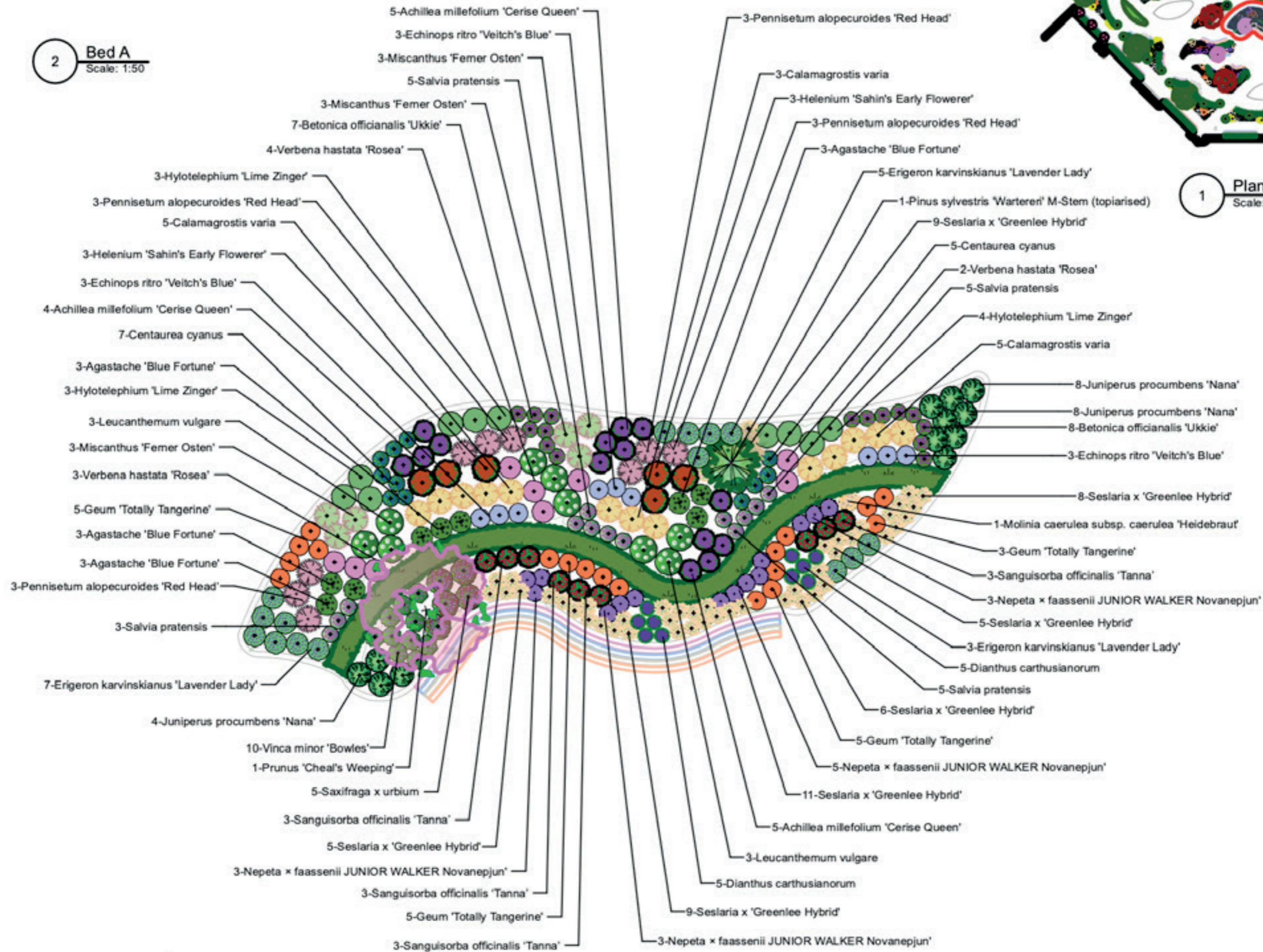


Matthew Gilbert • Garden and Landscape Design
 maglandscapes@outlook.com
 07794569283

PLANTING PLAN

PRIORY SCHOOL QUAD

2 **Bed A**
Scale: 1:50



1 **Planting Plan**
Scale: 1:500



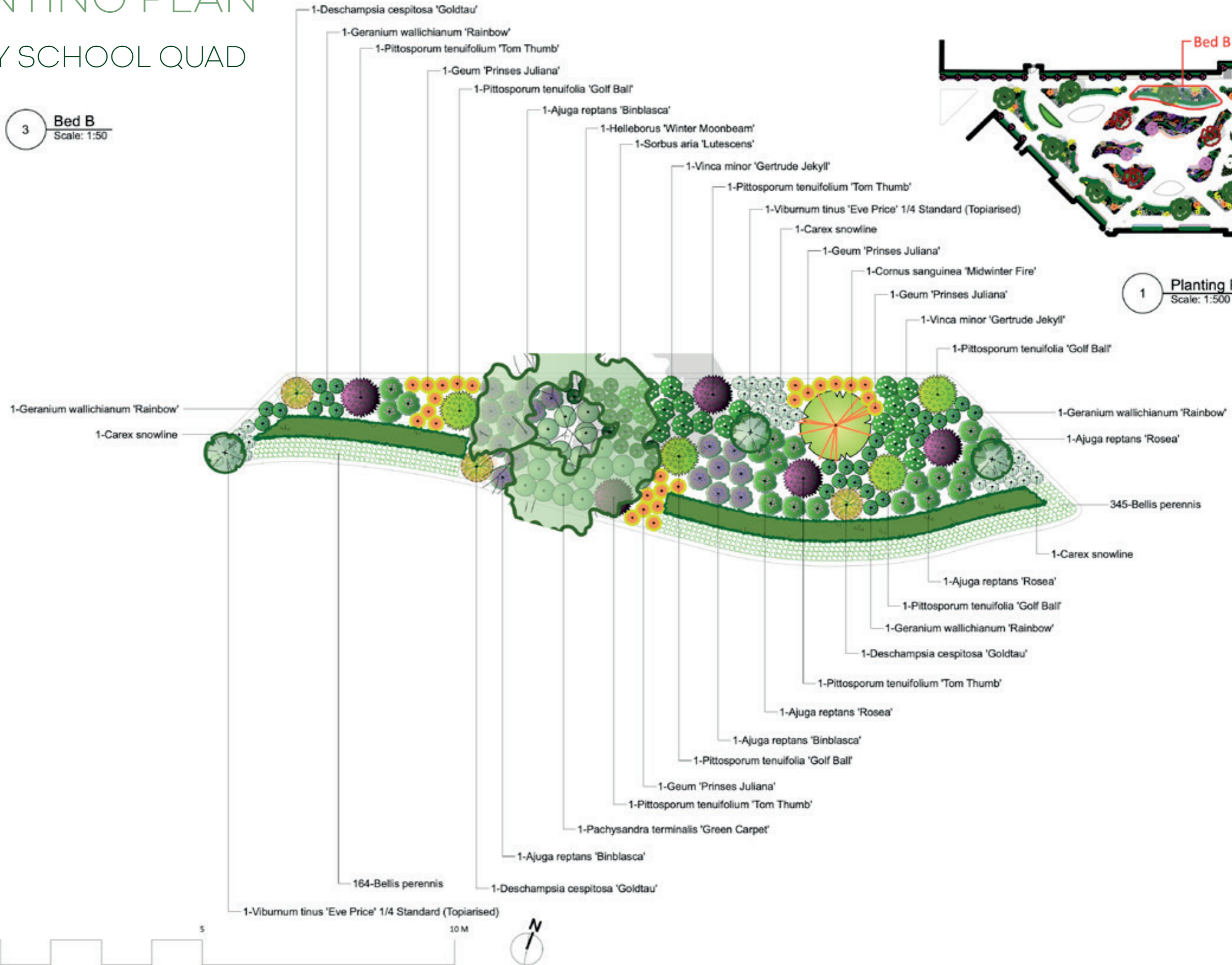
PLANTING PLAN

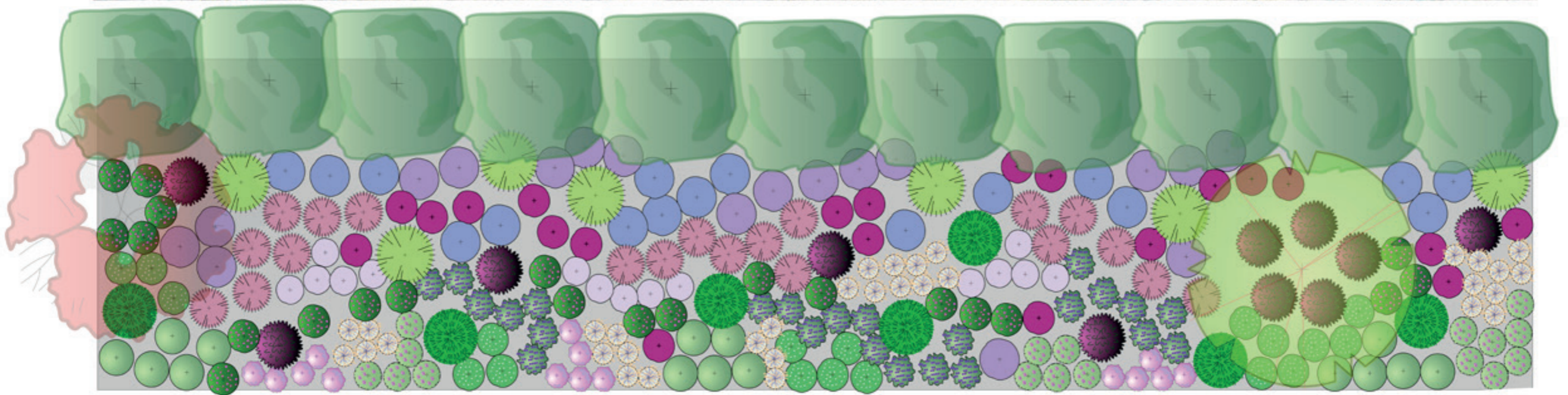
PRIORY SCHOOL QUAD

3 **Bed B**
Scale: 1:50



1 **Planting Plan**
Scale: 1:500





Made using vectorworks
Elevation drawn with
watercolour pencils



Matthew Gilbert • Garden and Landscape Design
maglandscapes@outlook.com
07794569283