



PORTEFOLIO
- Anna Fernandes -

‘ THE DETAILS ARE NOT THE
DETAILS THEY MAKE THE DESIGN ’

CHARLES EAMS



CONTENTS

COCKTAIL BAR

1. PROJECT 5

PLAYSCAPE

7. PROJECT 4

BESPOKE JOINERY

11. PROJECT 3

EXHIBITION STAND

15. PROJECT 2

RESIDENTIAL

19. PROJECT 1

GEORGIAN RESTORATION

23. PROJECT



1. SKETCH UP & ENSCAPE RENDER

COCKTAIL BAR

PROJECT 5

THE BRIEF

The brief is to design the world's hottest cocktail bar, key words are that it must be dark and sexy and to provide a unique drinking experience. Tailored for a refined clientele aged 21 and over. The space should have a mixture of banquet and modular seating, with dedicated room for a DJ booth. The aim is to create an ambiance that not only elevates the cocktail bar itself but also ensures a sophisticated and immersive environment for customers.

CONCEPT 'HEAT'



The cocktail bar called 'Heat', is a design concept created by the smoldering and simmering associations of fire and heat. Integrating textures, materials, lighting and ceiling design that resonate with this concept to create an ambiance and experience throughout the cocktail bar. The design seeks to immerse customers in an experience where every detail reflects the essence of heat, creating a distinct atmosphere and cocktail experience.



GROUND FLOOR PLAN

COCKTAIL BAR

PROJECT 5

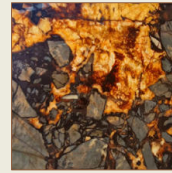
KEY FF&E



Throughout the bar FF&E the space revolves around maximizing versatility and social interaction. Banquet seating provides a sense of intimacy. Paired with modular square tables, the layout encourages flexibility, enabling the space to adapt for various events and group sizes.



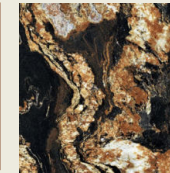
KEY MATERIALS



ONYX



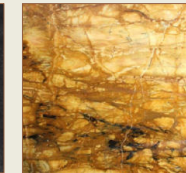
BRONZE



PORCELAIN



VETERIAN
PLASTER



MARBLE
RESIN

The cocktail bar 'Heat', integrates materials evoking the essence of fire and heat throughout its design, all while prioritising sustainability. It aims to create a visually striking but yet sustainable and eco-friendly atmosphere, ensuring a unique and sustainable cocktail experience.

BATHROOM DESIGN





COCKTAIL BAR

PROJECT 5

SPEAKEASY DESIGN 'THE HEATER'

'The Heater', located beneath the main cocktail bar in the basement, draws inspiration from the overarching concept of heat but intensifies the experience. Characterised by the red low level lighting and material choices. The design embodies the heightened sensation of approaching intense heat.

The name not only conveys physical warmth but also signifies a heightened and intense design below the upstairs bar. This experience aims to progressively elevate the ambiance and excitement for customers by each step underground. Creating a dynamic and engaging environment for customers seeking a more intense and unforgettable atmosphere.



BASEMENT FLOOR PLAN

KEY FF&E & MATERIALS



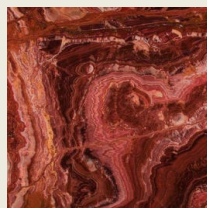
MATERIALS



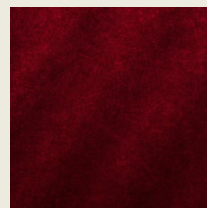
BURR



BRONZE



GRANITE



RED VELVET



PLAYSCAPE

GROUP PROJECT 4

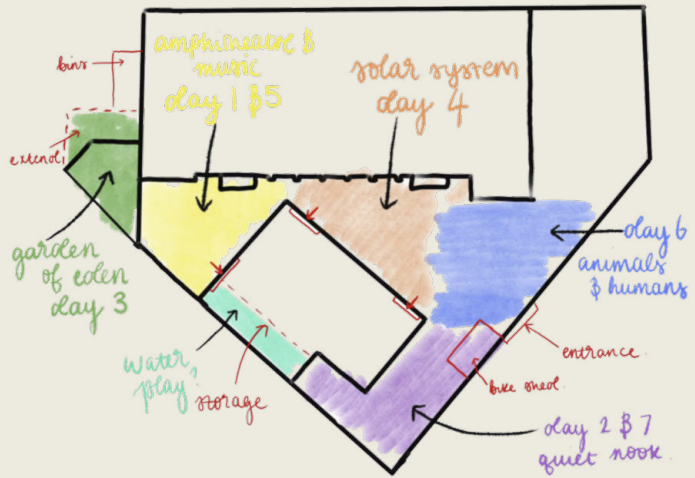


THE BRIEF

The client is St. John's Walham Green Church of England Primary School in Fulham. The brief is to re-imagine the outdoor space and transform it into a play area with clear zoning. Their key values should influence the design 'St John's is an exciting Christian school where everyone flourishes. We rejoice with our church and community, building for a better world'. Also considering the school's capacity, spatial restrictions, safeguarding, children's behaviour and weather conditions.

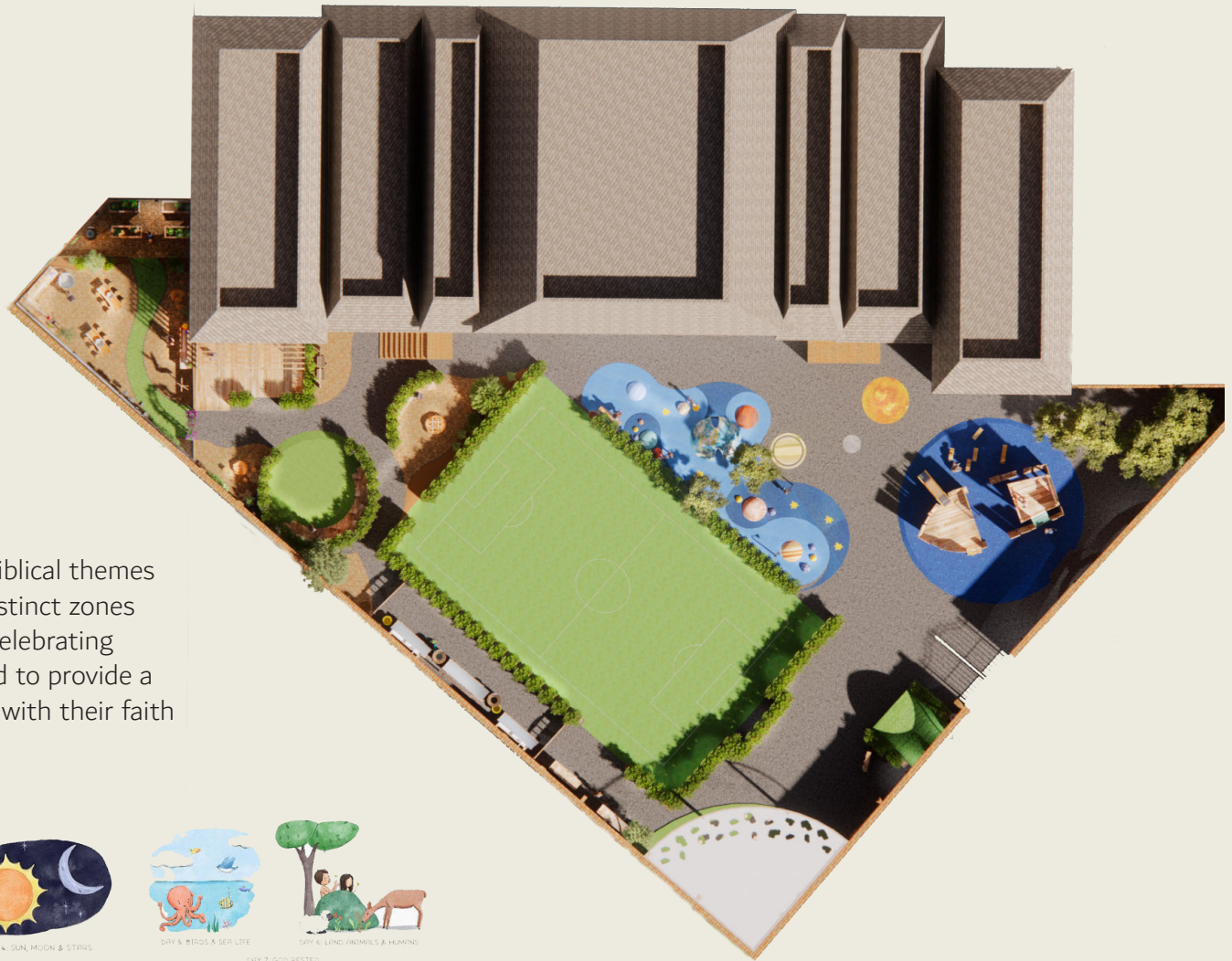
PLAYSCAPE

GROUP PROJECT 4



CONCEPT 'GODS CREATION'

The concept of "God's Creation" is based on the biblical themes inspired by the seven days of creation, creating distinct zones that encourage growth and joyful learning while celebrating the wonders of each day of creation. It is designed to provide a vibrant environment where students can connect with their faith through play.



THE PLAN

PLAYSCAPE

GROUP PROJECT 5

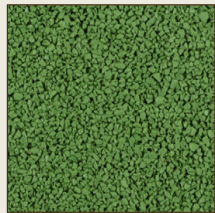
My group's project was chosen for the playscape commission. As the creative director, I led the development of concepts for the play - reading zone and the space mounds. Using SketchUp, I brought these ideas to life with detailed visualisations for the client's consideration that were chosen.



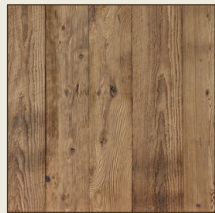
MATERIALS



RUBBER MULCH



WET POURED RUBBER



RECLAIMED WOOD



HAZEL HURDING FENCING



We have chosen to focus on the sustainability and durability of materials whilst wanting a nature-inspired aesthetic. Choosing materials to create a long-lasting, eco-friendly, and inviting environment that brings back nature into the playground.



PLAY

BESPOKE JOINERY

PROJECT 3



THE BRIEF

Commissioned to design a new reception desk for West Dean. The main aim of the project was to find creative solutions to the current problems of the reception desk that they are currently using. Merging thoughtful design with practical aesthetics to combine innovation with functionality. Whilst linking the design to their inherent tie to surrealism and the Edward James Foundation.

BESPOKE JOINERY

PROJECT 3

THE DESIGN

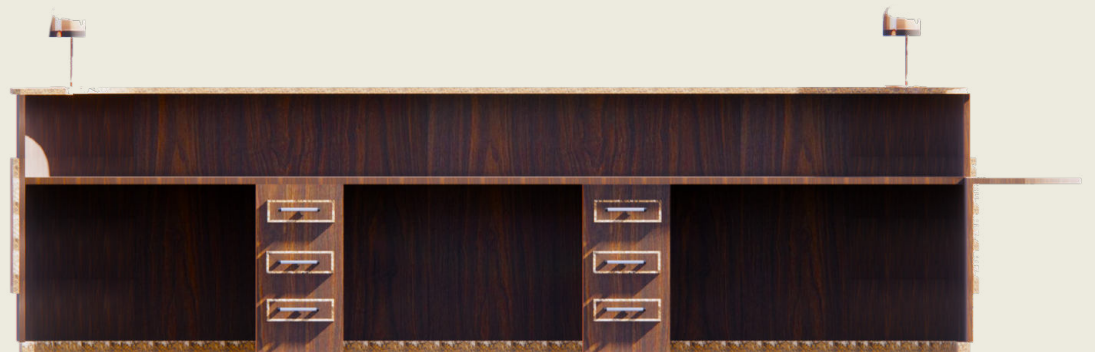
Designing a reception desk that not only serves as an efficient workspace for the receptionists but also captures the whimsical and imaginative qualities associated with West Dean and surrealism. From the use of selected material of burr walnut. The juxtaposition of the swirls and lines connects with surrealism sparking curiosity. Engaging visitors in discussions about surrealism and the artistic heritage of West Dean.



It was important to create the link with surrealism in a subtle way through the choice of materiality, maintaining elegance and creating a design that is still in keeping with the traditional style and heritage of West Dean.



TOP PLAN



REAR ELEVATION

BESPOKE JOINERY

PROJECT 3

MATERIALS

The incorporation of bronze adds a sense of opulence and sophistication, complementing the walnut wood. Bronze was chosen for its sustainability as it is durable and a recyclable material. It has a timeless appeal, enhancing the overall aesthetic and reflecting the artistic heritage of West Dean



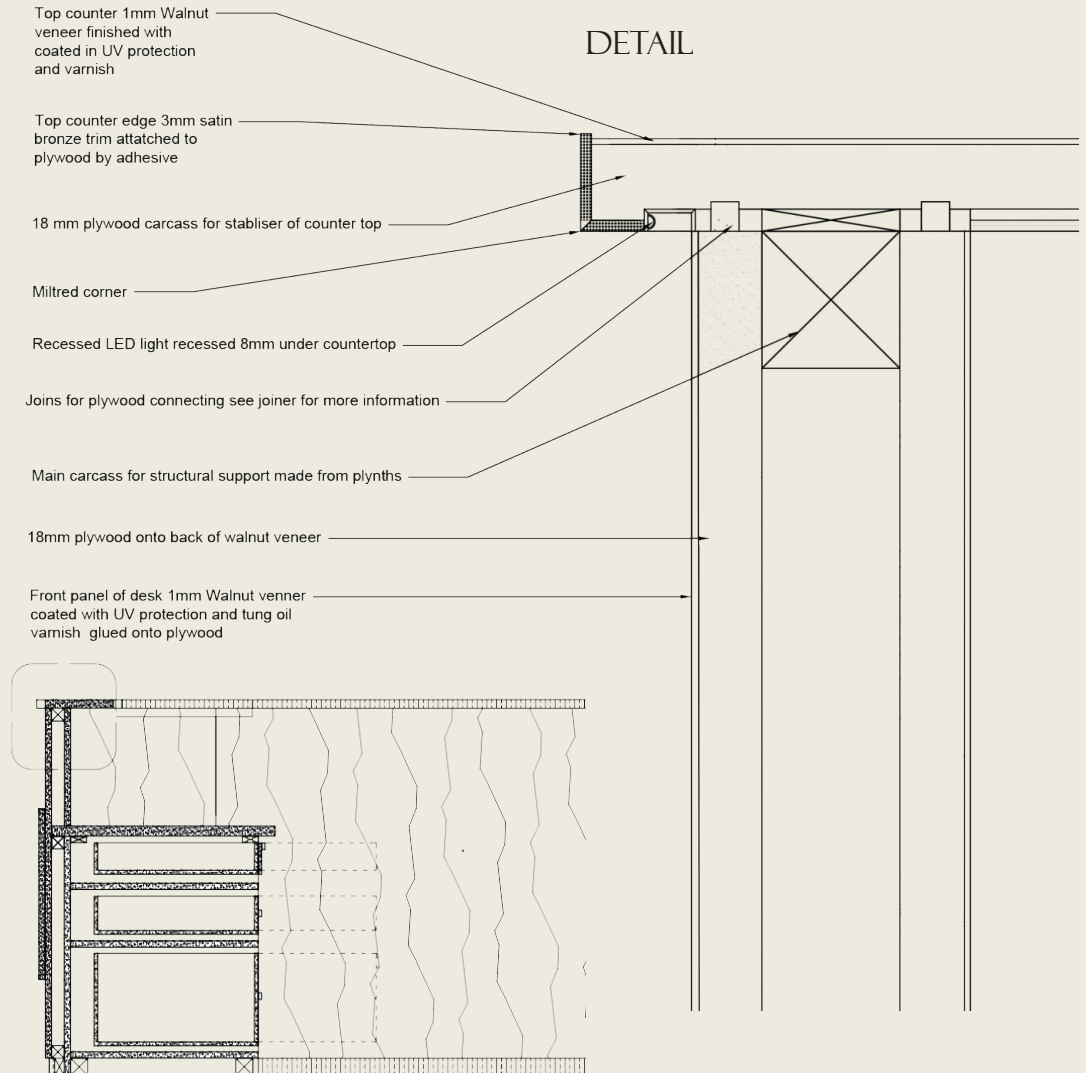
KNURLED BRONZE

BRUSHED
BRONZE

BURR WALNUT

BLACK AMERICAN
WALNUT

Walnut was not only chosen for its natural beauty and timeless appeal but also for its sustainability and durability. To ensure this, the wood would be used as a veneer form. This would still provide a sturdy and long-lasting structure. The design will be executed with a strong focus on craftsmanship and sustainable practices from skilled artisans at West Dean. It's warm tones and distinct grain patterns add depth and character to the design, reflecting the heritage of West Dean.

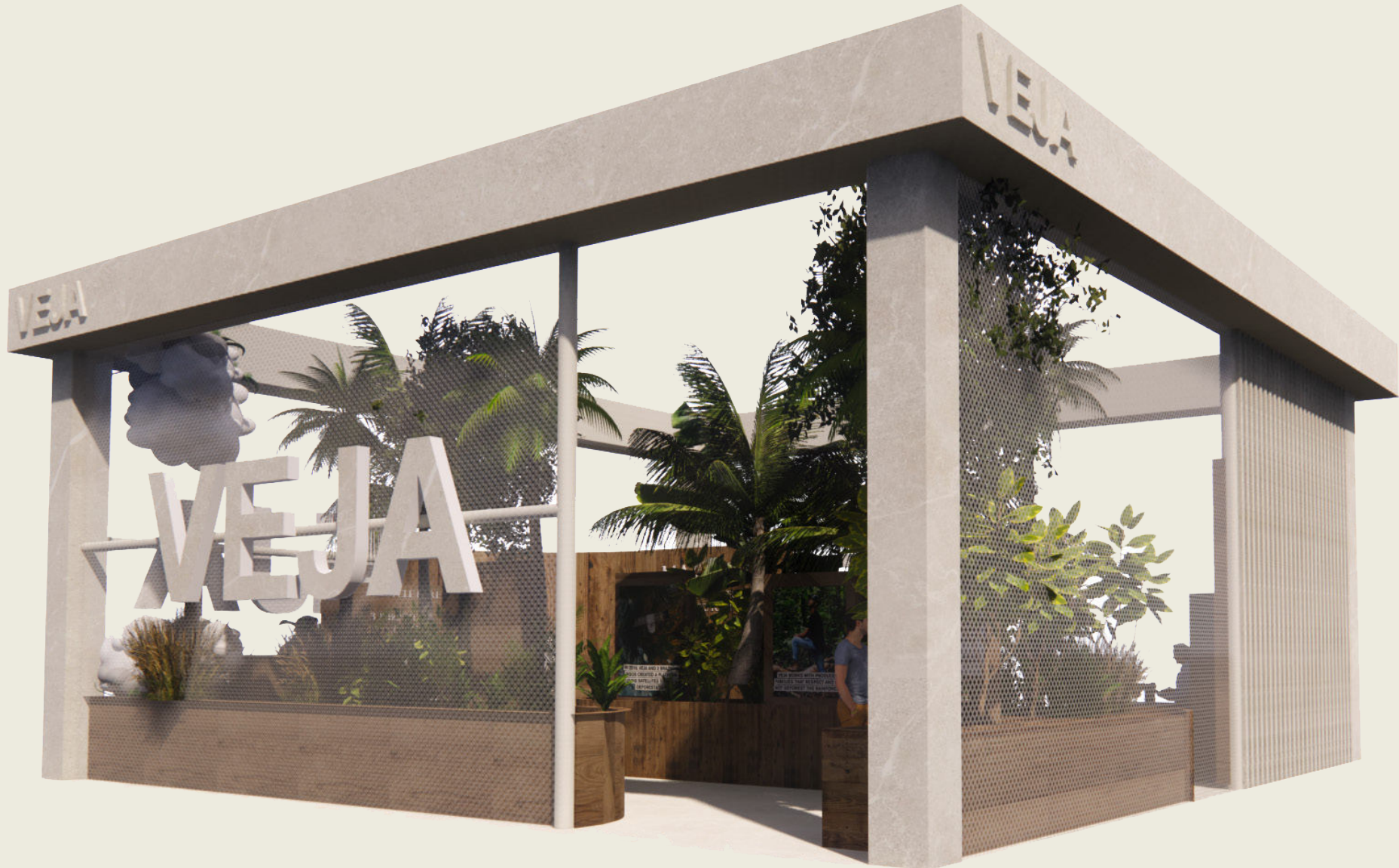


BESPOKE JOINERY

PROJECT 3



EXHIBITION STAND
PROJECT 2



EXHIBITION STAND PROJECT 2

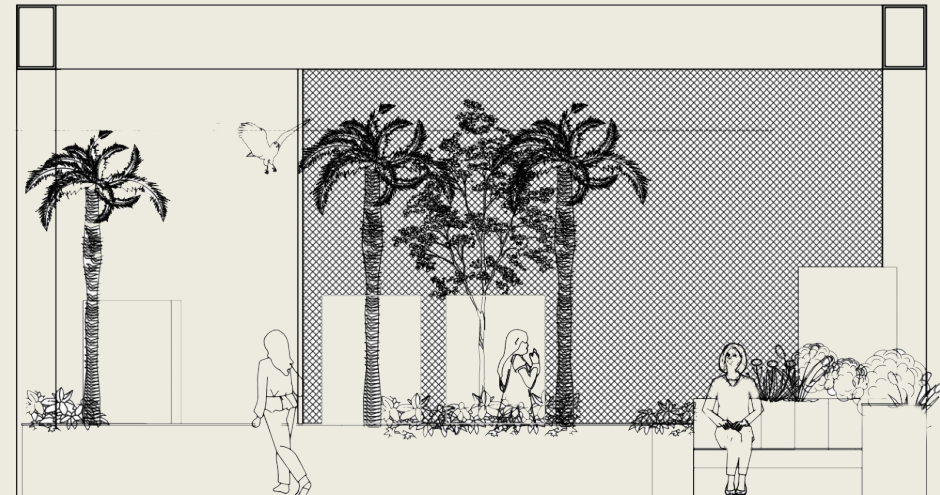
THE BRIEF

Veja has developed strategy to create a pop-up exhibition that represents the brand values and aspirations of the company. Helps generate public/media interest and further promotes brand recognition and educates visitors about the brand.



CONCEPT – ‘JOURNEY THROUGH REALITY’

Inspired by the common thread throughout Veja of transparency and the quote ‘Sustainability is an empty word. We choose reality’. This led to my concept of ‘Journey through reality’. Focusing on transparency for the exterior of the stand design and creating a customer journey throughout the stand showing the life cycle of the shoe. Basing the exterior shape of the exhibition stand on the Veja shoe box. Focusing on transparency from the use of Veja’s B-mesh material used to create the exterior mesh further portraying transparency and the open roof top.



SECTION - NOT TO SCALE

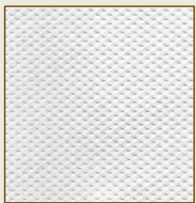
EXHIBITION STAND

PROJECT 2

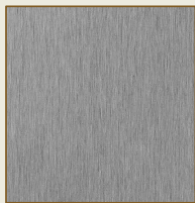


The exhibition is one way a journey entering at the amazon rain forest at the start cycle of the shoe product. Creating a journey that follows along the life cycle of the shoe. Educating customers on how ethical and transparent the shoe brand.

MATERIALS



B-MESH



ALUMINIUM



RECLAIMED
WOOD



AMAZONIA
RUBBER

Sustainability and recyclability of materials were important. Using Vejas own materials of 'B Mesh' for the stand to make reference to the transparency they portray. Also using there own Amazonia rubber for flooring means this can be re-used to create shoes.



PROPOSED PLAN - PLAN VIEW



ORIGINALITY
ORIGINALITY

WASHERS ARE WELL COMPROMISED AND
FOR THE FUTURE, CONSIDERING, HOWEVER, AS
AND WITH SUSTAINABLE WASH - SUSTAINABLE
WASHING MACHINES TO TAKE WITH US AND
WASHING MACHINES.

THE SUSTAINABLE ALL THE PARTS
WASHERS TO 10 YEARS, WHICH
IS A GREAT FEATURE THAT
WASHERS ARE

There, 100% of the coffee production coming
from Bergamot Shores, Peru,
is certified organic.
10% of the coffee is now
BOD (organic) and organic.

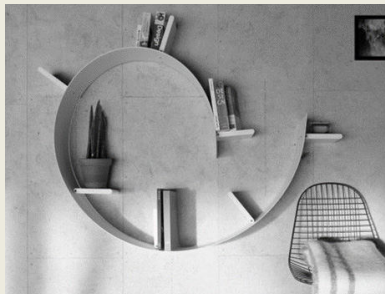
SUSTAINABILITY
IS AN EMPTY WORD,
WE CHOOSE REALITY



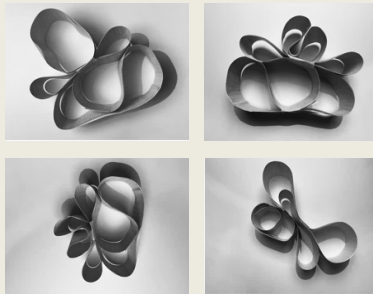
RESIDENTIAL PROJECT 1

THE BRIEF

Design a shell apartment for client Geoffrey Matkstutis, Architect and head of KLC in Battersea. The client is an avid reader and collects many books on architecture, design, interiors and art. The client wanted an open-plan living and dining area to ensure that he didn't feel cut off from his guests while cooking and entertaining.



RON ARAD BOOKWORM



DEVELOPMENT

CONCEPT

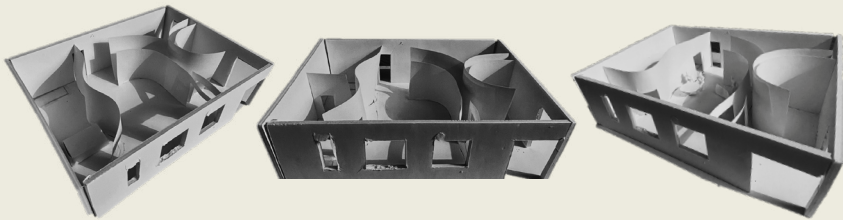
The design concept is inspired by the client's admiration for Ron Arad's bookworm, translating its fluid curves into a captivating and dynamic design language. Embracing the organic flow of Arad's iconic piece, the concept integrates the curves throughout the space, creating an open plan and harmonious environment.



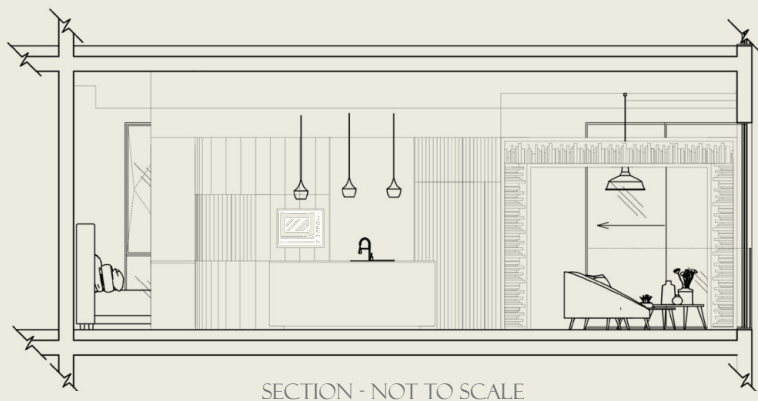
PROPOSED DESIGN - PLAN VIEW

RESIDENTIAL PROJECT 1

DESIGN DEVELOPMENT



The design features a central large curve in the heart of the apartment, creating an open living and dining area that maximizes natural light. Another smaller curve forms a U-shaped studio room for a reading nook and a separate TV space. The architectural layout accommodates Geoffrey's extensive book collection whilst connecting with the fact he is an architect himself.



MATERIALS



DEKTON

STONE

OAK

PORCELAIN

The materials chosen are based on their sustainability and environmental consciousness. Creating a space that utilizes reclaimed and sustainable materials, using a mixture of neutral colours and textures to fit in the clients expectations. Each element of this design has been thoughtfully chosen to minimise its environmental footprint.

FF&E



RESIDENTIAL
PROJECT 1



ART
GEORGIAN RESTORATION
PROJECT



GEORGIAN RESTORATION PROJECT

BRIEF

Produce an design scheme proposal for a main living space of an Georgian property in Soho, London. The owners are a young couple who would like to see period details returned to their property. They have requested a contemporary design scheme that incorporates colours, finishes and patterns that reference the age of the property.

THE SCHEME

The early Georgian drawing room, focuses on three keywords: symmetry, proportion and harmony. Throughout the space I wanted to keep a contemporary and traditional feel whilst in keeping with the building. The colour reflects the Georgian period where the clients wanted to create a sophisticated and restful atmosphere. Chinoiserie paneling wallpaper was inspired from the era reflecting balance and harmony in the space.

Adding furniture that enhances the property's age by using mahogany wood, opting for a Jonathan Charles cabinet either side of the fireplace this creates visual balance. Creating a focal point in the centre of the room from the Carrera and sandstone fireplace. Adding contemporary details to the scheme with window treatments are pinch pleats with a pole bracket.





- Anna Fernandes -

AF

EMAIL : ANNAAFERNANDESS@GMAIL.COM

PHONE : 07592041098