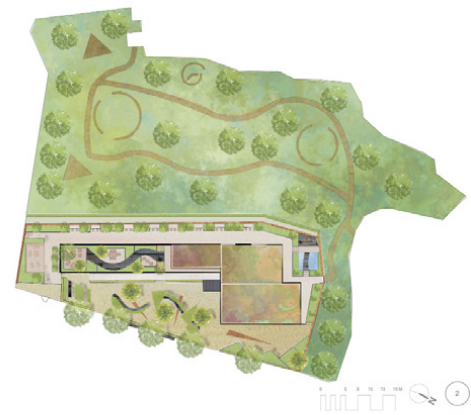


HELIER BOWLING

PORTFOLIO



# CONTENTS



PAGE 3  
HISTORICAL

Isokon Flats, Belsize Park



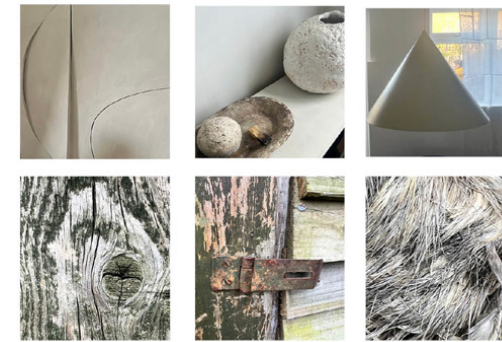
PAGE 10  
PUBLIC REALM/  
THERAPEUTIC

Priory School, Lewes



PAGE 14  
CONCEPTUAL

RHS Hampton Court  
Garden Festival



PAGE 15  
RESIDENTIAL

Wimbledon Family Garden



PAGE 16  
ABOUT ME

Show Garden  
CV



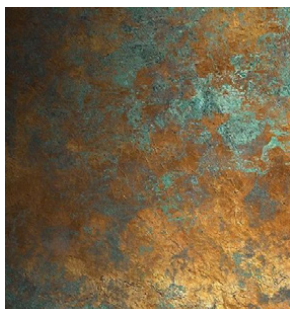
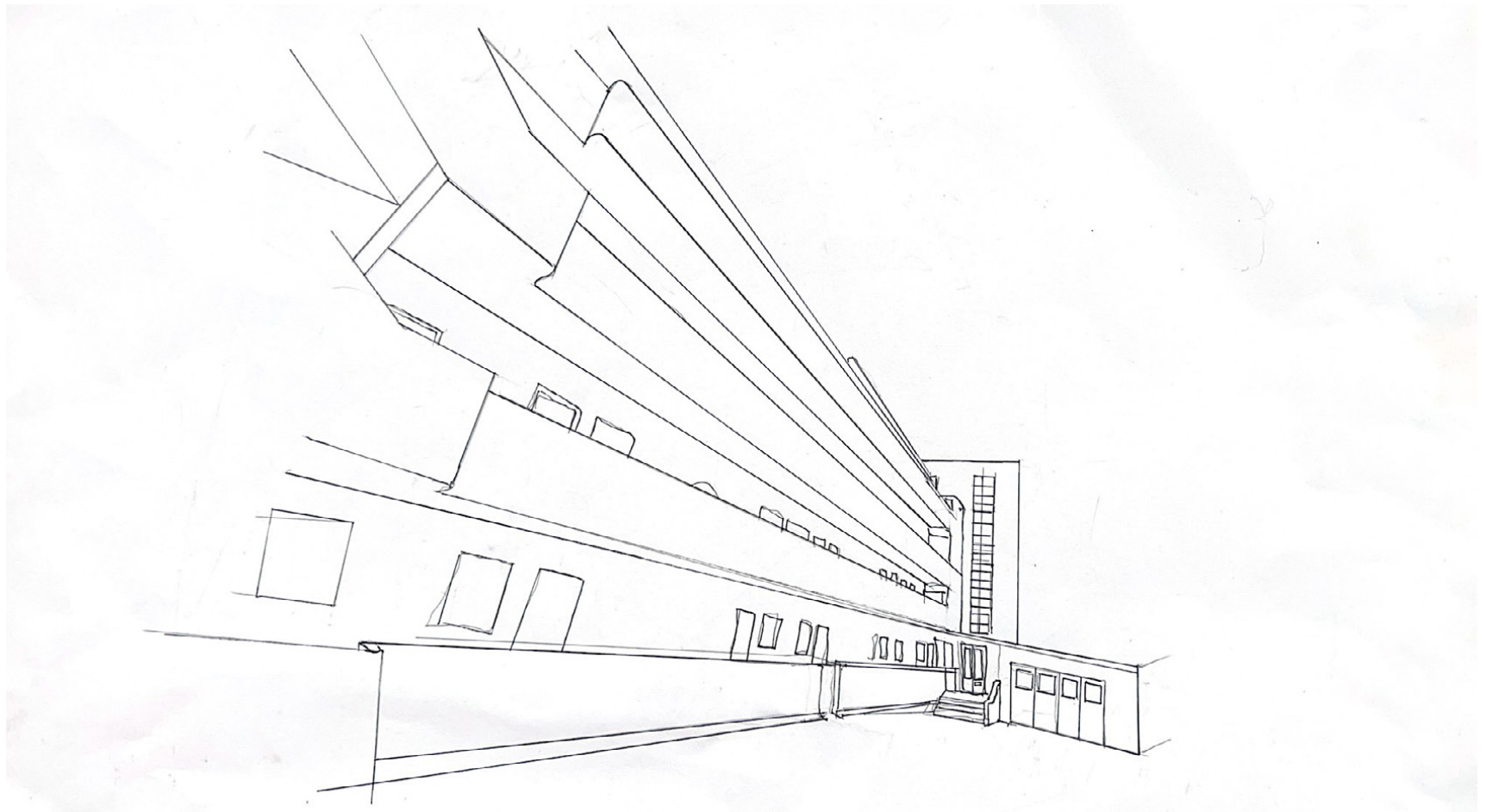
# HISTORICAL GARDEN | ISOKON BUILDING | 'PEOPLE, PLANTS AND POLLINATORS'

## BRIEF

To design the outdoor space of the modernist Bauhaus Isokon flats in Belsize Park, London for residents to relax, work and create; a new roof garden for the Penthouse flat; and better integration of Belsize Woods.

## CONCEPT

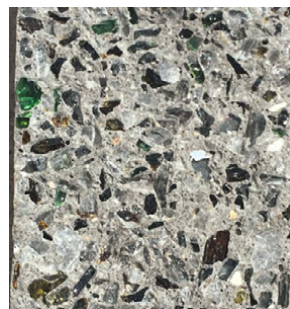
A new blueprint of People, Plants and Pollinators informing every part of the design for the Isokon, taking inspiration from Kandinsky's love of geometry and colour, and bringing access to nature to the residents of these iconic urban flats.



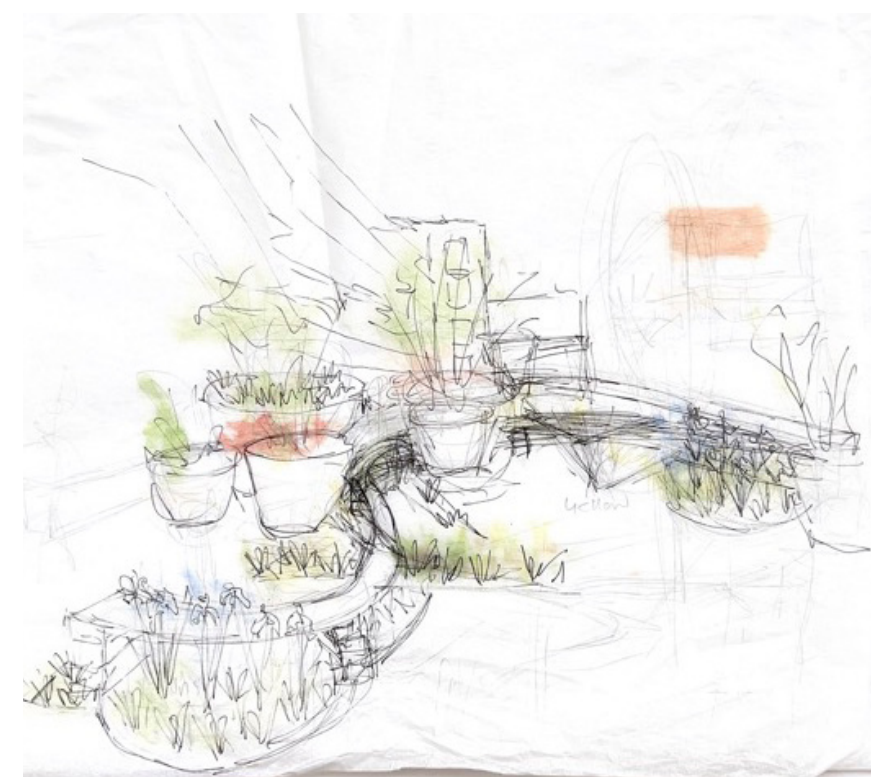
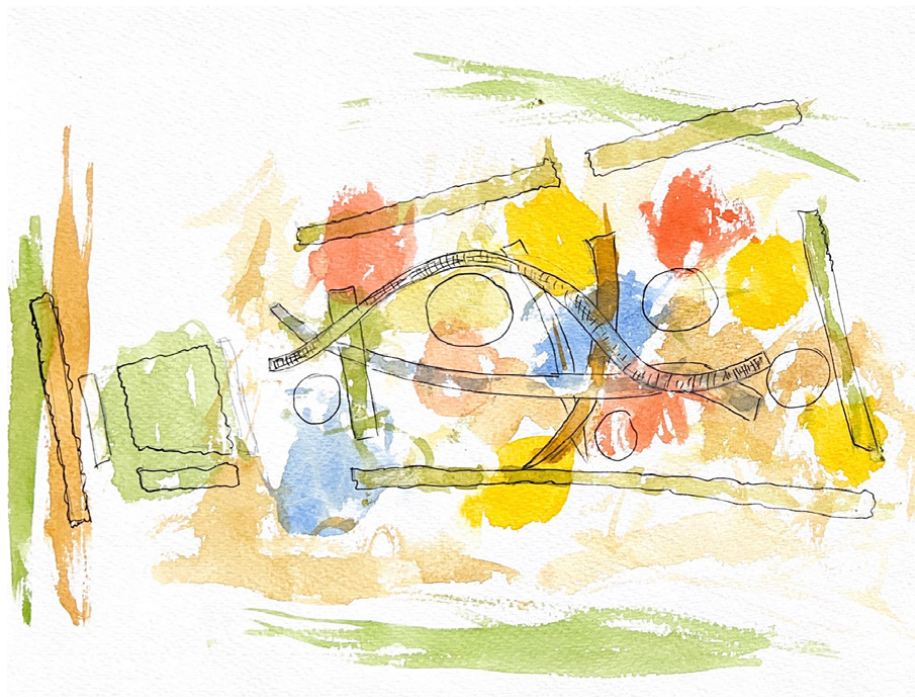
Secret Copper  
Door to Belsize  
Woods



Shou sugi ban  
Accoya benches



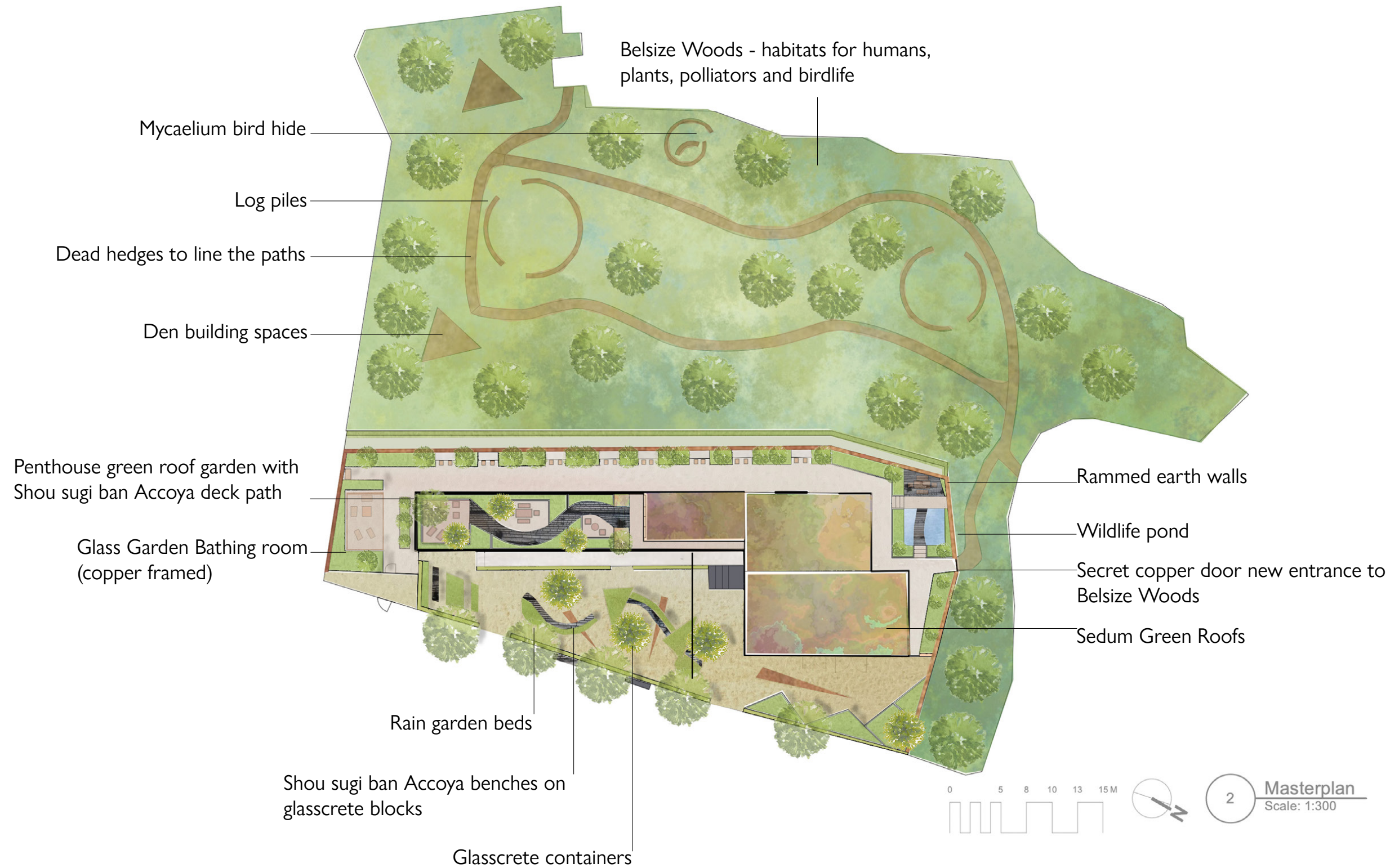
Glasscrete  
blocks and  
planters



Concept Sketches of the front of house space, hand-drawn in ink and rendered in watercolour



# HISTORICAL GARDEN | ISOKON BUILDING | 'PEOPLE, PLANTS AND POLLINATORS'



Masterplan drawn to scale in Vectorworks and rendered in Photoshop



# HISTORICAL GARDEN | ISOKON BUILDING | PEOPLE, PLANTS AND POLLINATORS

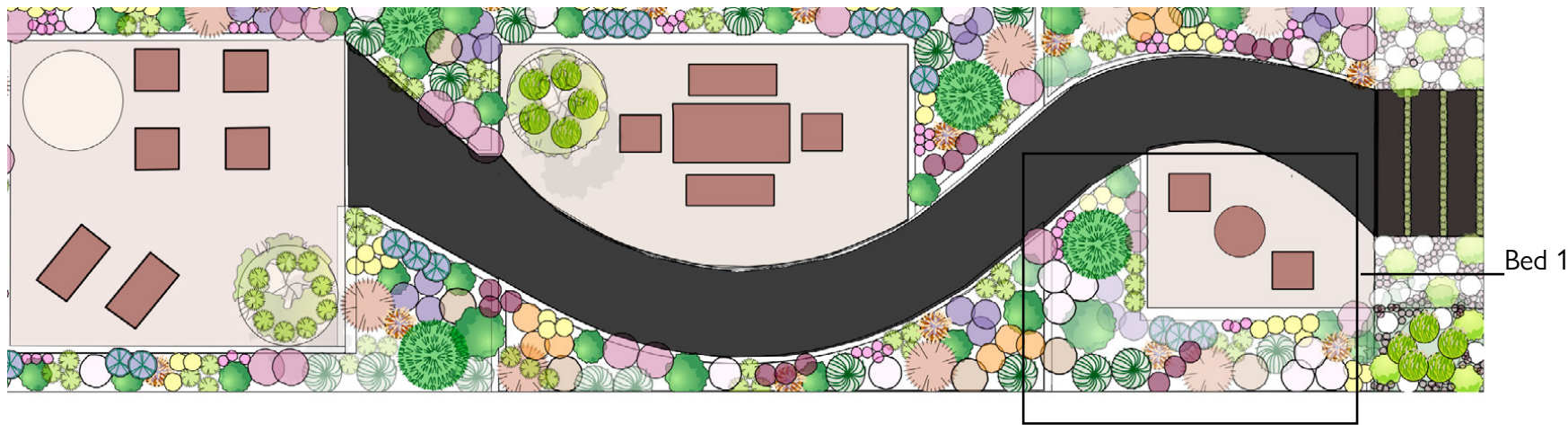
Social seating area welcoming people, plants and pollinators with structural, seasonal and filler woodland edge and rain garden planting



Visual of front of Isokon at dusk, mid summer. Part hand-drawn, then designed and rendered in Photoshop

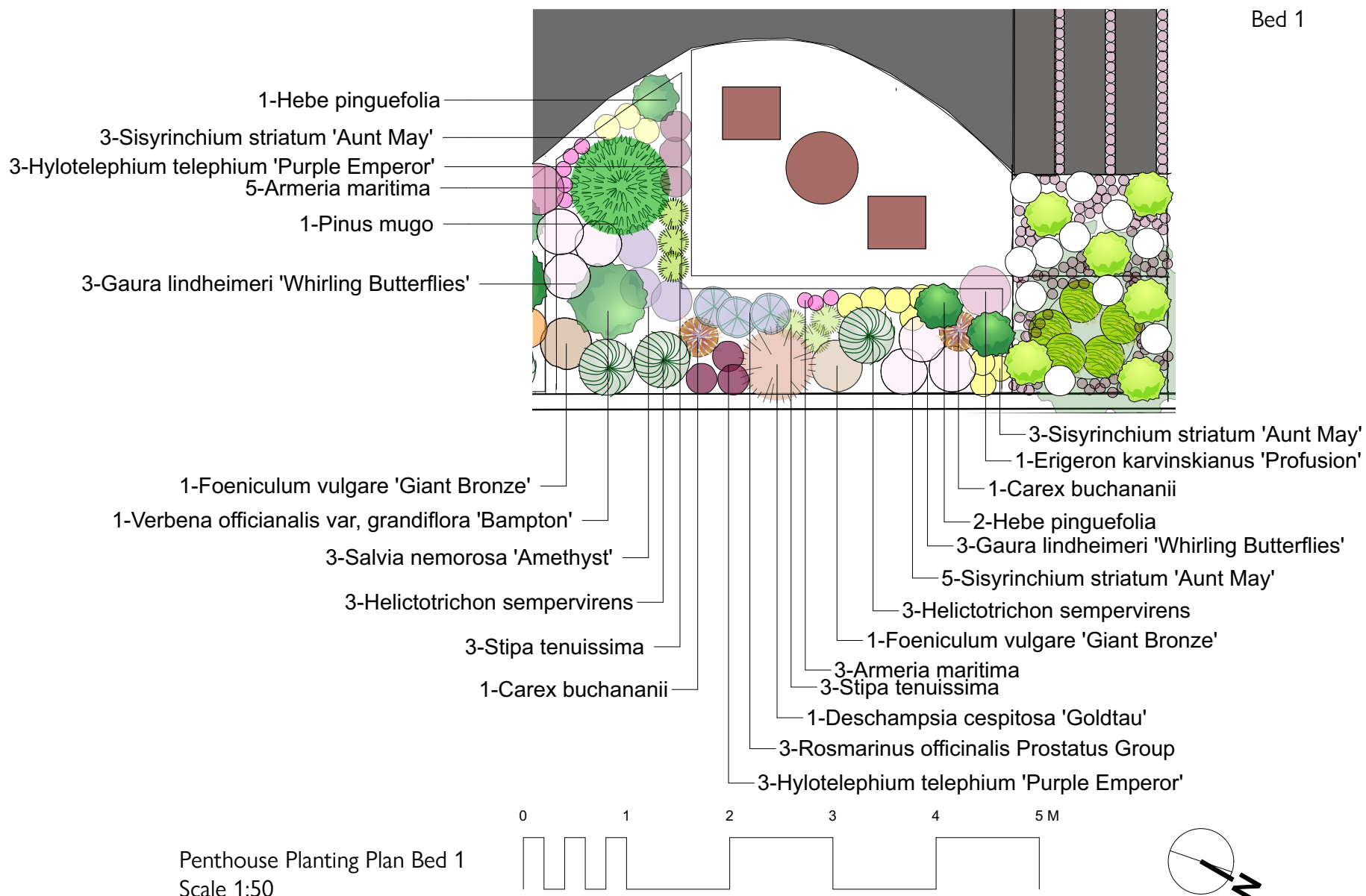


# HISTORICAL GARDEN | ISOKON BUILDING | 'PEOPLE, PLANTS AND POLLINATORS'



Category	Quantity	Latin Name	Scheduled Size	
Trees	27	1028	27	13
Shrubs	26	Cornus kousa var. chinensis	175/200 C.65L	Griffin Nurseries
Shrubs	4	Hebe pinguifolia 'Sutherlandii'	5L	Griffin Nurseries
Shrubs	16	Pinus mugo	10L	Griffin Nurseries
Shrubs	2	Rosmarinus officinalis Prostatu Group	p9	Arvensis Perennials
Perennials	9	Verbena officinalis var. grandiflora 'Bampton'	p9	Arvensis Perennials
Perennials	55	Achillea 'Terracotta'	p9	Arvensis Perennials
Perennials	18	Armeria maritima	p9	Arvensis Perennials
Perennials	6	Eriogon karvinskianus 'Profusion'	p9	Arvensis Perennials
Perennials	15	Foeniculum vulgare 'Giant Bronze'	p9	Arvensis Perennials
Perennials	18	Gaura lindheimeri 'Whirling Butterflies'	p9	Arvensis Perennials
Ornamental Grass	14	Hylotelephium telephium 'Purple Emperor'	p9	Arvensis Perennials
Ornamental Grass	10	Carex buchananii	p9	Arvensis Perennials
Ornamental Grass	18	Hakonechloa macra 'Aureola'	p9	Arvensis Perennials
Orn. Grasses-Bamboos	16	Helictotrichon sempervirens	p9	Arvensis Perennials
Herbs	5	Carex elata 'Bowles Golden' ('Aurea')	p9	Arvensis Perennials
Grasses	9	Origanum laevigatum 'Herrenhausen'	p9	Arvensis Perennials
Trees	1	Deschampsia cespitosa 'Goldtau'	2L	Arvensis Perennials
Perennials	24	Pinus sylvestris 'Watereri'	Multi-stem 47L	Griffin Nurseries
Perennials	20	Salvia nemorosa 'Amethyst'	p9	Arvensis Perennials
Perennials	211	Sedum acre	p9	Arvensis Perennials
Perennials	16	Sedum album	p9	Arvensis Perennials
Perennials	51	Sedum spectabile 'Brilliant' (S. x 'Brilliant')	p9	Arvensis Perennials
Grasses	63	Sisyrinchium striatum 'Aunt May'	p9	Arvensis Perennials
Cactus/Succulent, Groundcover	11	Stipa tenuissima	p9	Arvensis Perennials
		Sedum rupestre 'Annelina'	p9	Arvensis Perennials

Penthouse Plant Schedule



Penthouse Planting Plan Bed 1  
Scale 1:50



Sisyrinchium striatum 'Aunt May'



Salvia nemorosa 'Amethyst'



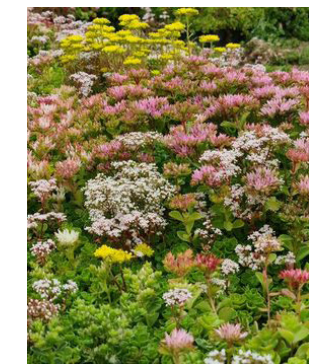
Helictotrichon sempervirens



Foeniculum vulgare



Allium flavum



Sedum



# HISTORICAL GARDEN | ISOKON BUILDING | PEOPLE, PLANTS AND POLLINATORS

Sedum planting, raised glasscrete planters filled with resilient sun-loving plant community planting to enjoy urban and woodland views



Visual of Penthouse, mid summer, designed in SketchUp and rendered in Photoshop



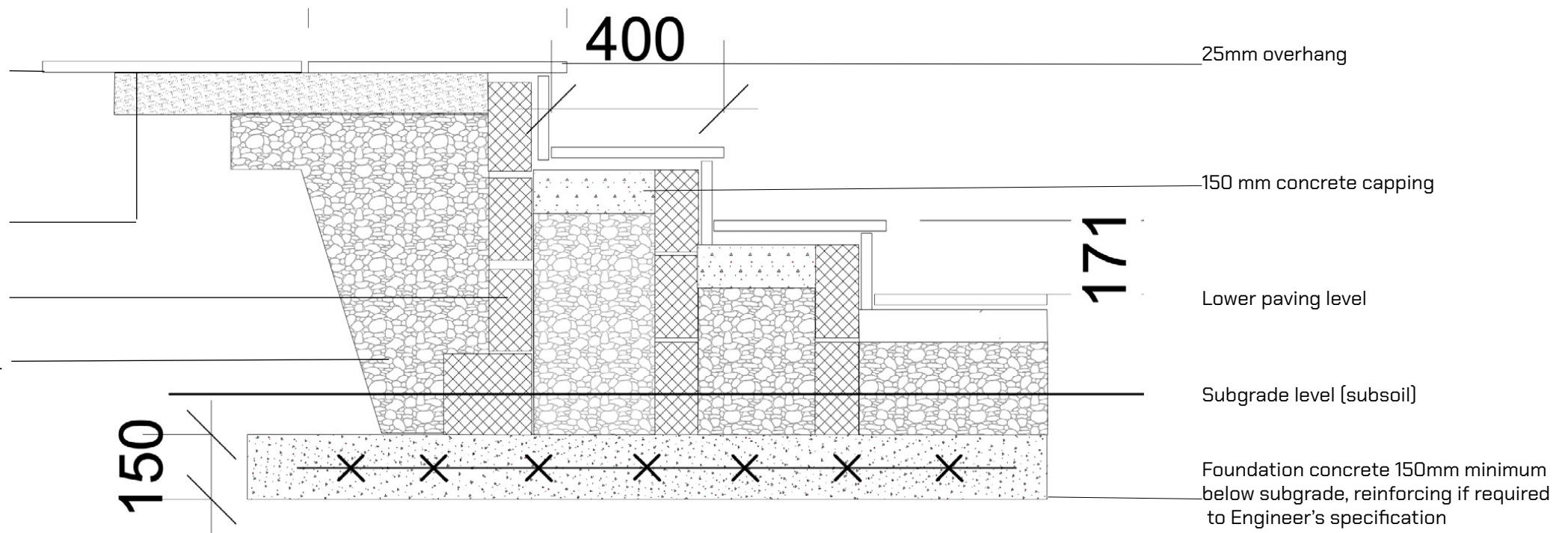
# HISTORICAL GARDEN | ISOKON BUILDING | PEOPLE, PLANTS AND POLLINATORS

## CONSTRUCTION



PAVING Pink Bellagio Terrazzo non-slip porcelain tiles from Terrazzo Tiles Belsize Park 600 x 600 x 20mm laid in linear bond with 6mm joints filled with resin mortar coloured to match paving

Mortar bed 100mm  
DCB 7.3kN 440 x 215 x 100mm  
Cavity filled with Type 1 compacted aggregate

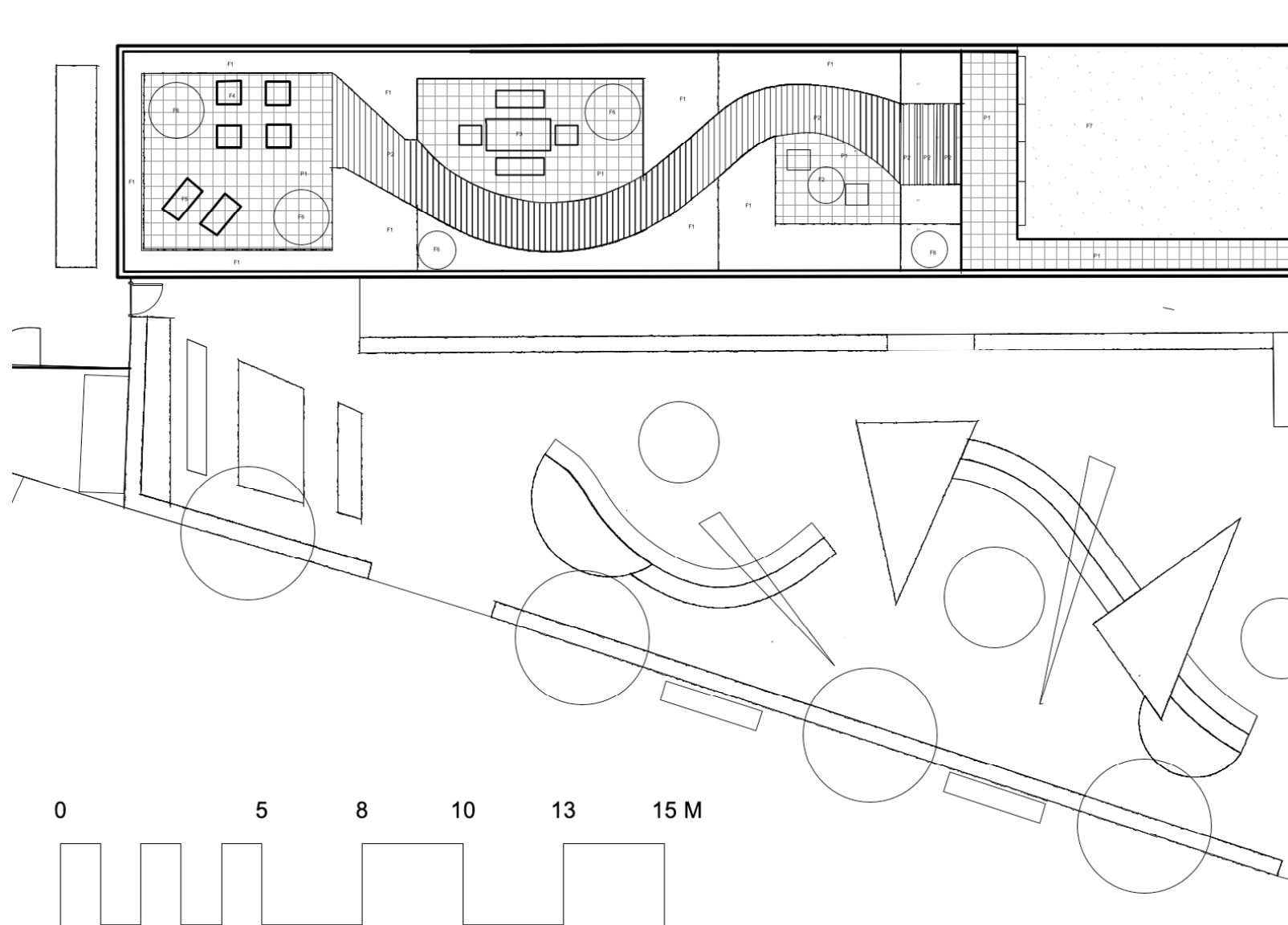


1 Steps  
Scale: 1:10



# HISTORICAL GARDEN | ISOKON BUILDING | PEOPLE, PLANTS AND POLLINATORS

## GENERAL ARRANGEMENT PLAN



- P1 600mm x 600mm x 20 mm thick Bellagio Terrazzo tiles from Terrazzo Tiles Belsize Park laid in linear bond with 6mm joints filled with resin mortar coloured to match paving
- S1 Bespoke step tread 400mm x 2000mm x 250mm Accoya Shou sugi ban timber decking with Grad deck fixings
- E1 Pinned steel edging to planting bed edges, height 100mm
- P1 Prefabricated Glasscrete raised planters, colour to match exterior wall paint RAL no tba
- F2 Casual dining Hay Palissade steel cone table 700mm diameter and two chairs, colour Iron Red
- F3 Formal dining Hay Palissade steel dining table, two benches and two chairs, colour Iron Red
- F4 Current owner's wooden casual seating, 4 x chairs
- F5 2 x Hay Palissade chaise loungers colour Iron Red
- F6/F8 Container Planting from Torc Pots. Detail and finish tbc
- F7 Green Roof. Detail tbc

1
**General Arrangement Plan - Penthouse**  
 Scale: 1:200

Do not scale from this drawing.  
 All dimensions in millimeters and indicative only. All dimensions must be checked on site and any discrepancies checked with the landscape designer. Drawing based on survey information by others. Any discrepancies between the drawings and the site conditions to be brought to the attention of the landscape designer.



# PUBLIC REALM THERAPEUTIC GARDEN | PRIORY SCHOOL, LEWES

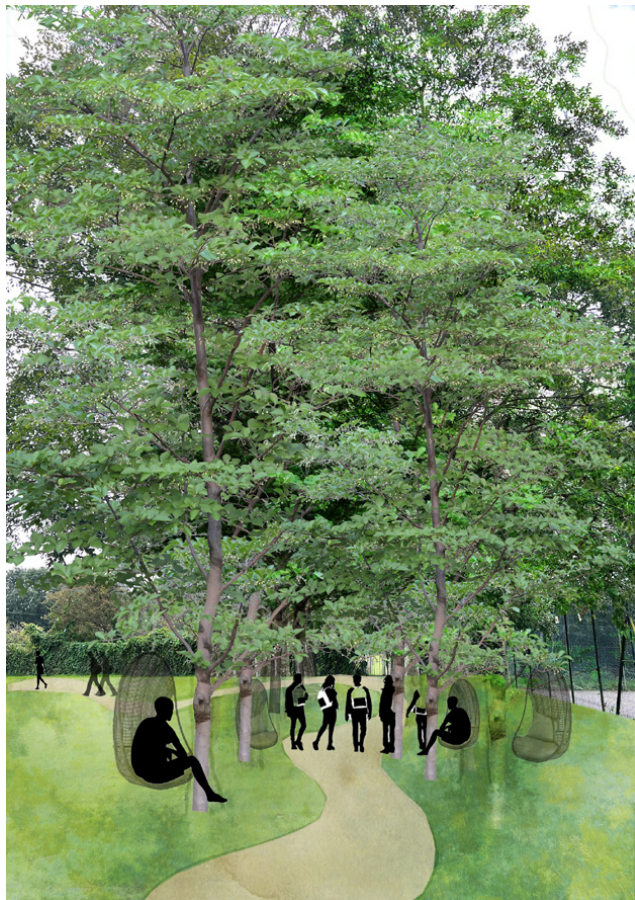
## BRIEF

To bring a sense of community, nature and biodiversity to the Quad, Courtyard and field of Priory School, Lewes delivering therapeutic practical spaces to students and staff.



## CONCEPT

A Forest School is brought to Priory School creating a calm sense of belonging, nurture and joy for students and staff through beautiful pollinator-friendly planting and use of space.



Circular Path around the field through the trees for social walking, gathering in treehouses/nests and having fun on swings or slacklines.



Rain Garden flowers and grasses for biodiversity, colour and joy.



Masterplan of Priory School drawn to scale in Vectorworks and rendered in Photoshop



## PUBLIC REALM THERAPEUTIC GARDEN | PRIORY SCHOOL, LEWES

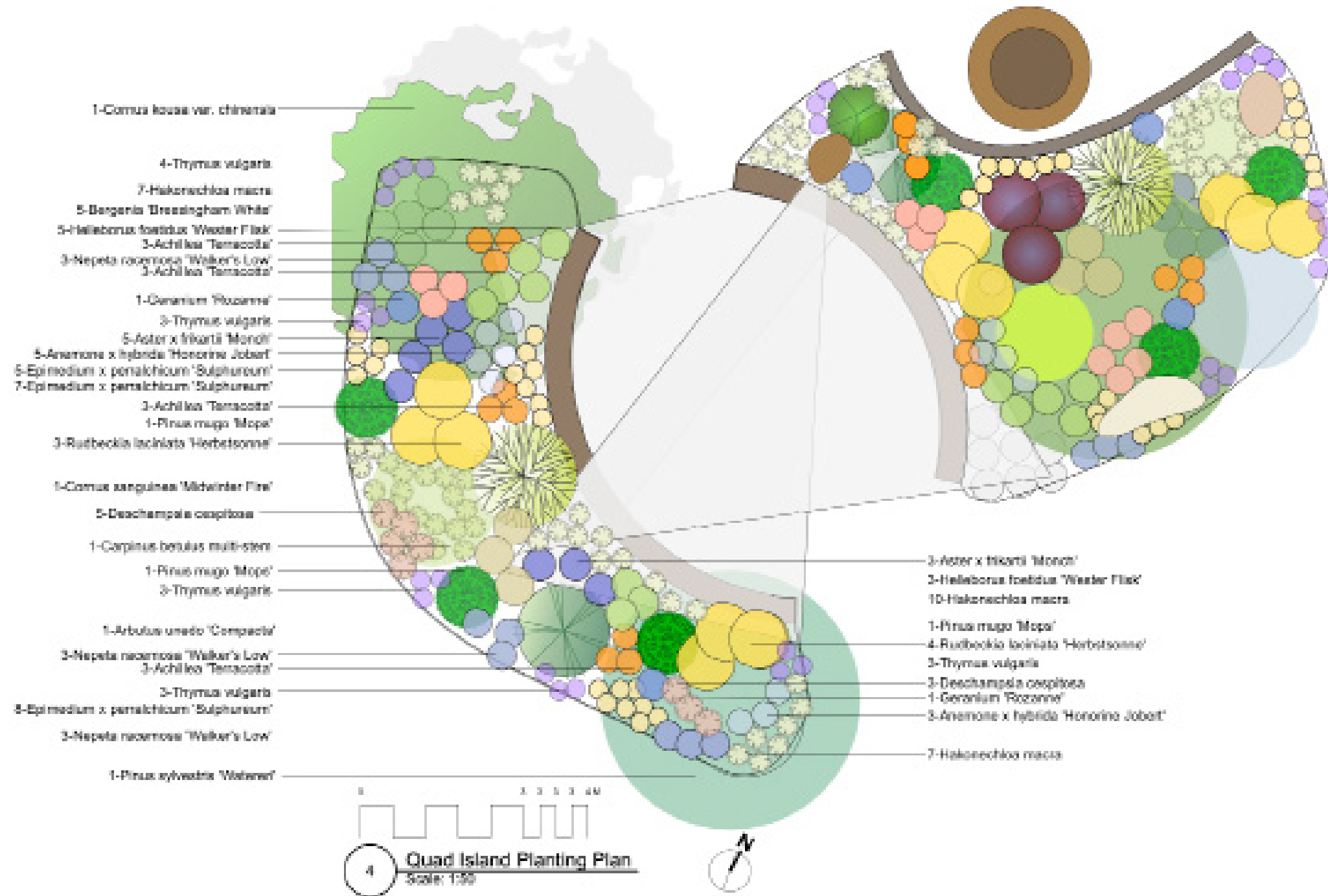
The Quad - seasonal colour and interest with resilient planting of trees, shrubs and flowers, gabion seating and shelter from sail shades



Visual of the Quad, at the start of Autumn Term, part hand-drawn and then designed and rendered in Photoshop



# PUBLIC REALM THERAPEUTIC GARDEN | PRIORY SCHOOL, LEWES



Scale model of the Quad, made using cardboard, sticks and seedheads.



## PUBLIC REALM THERAPEUTIC GARDEN | PRIORY SCHOOL, LEWES

The Courtyard - a private space for staff to relax, places to sit socially or alone, surrounded by nature



Visual of Staff Courtyard, in the midday sunshine, created in SketchUp and rendered in Photoshop



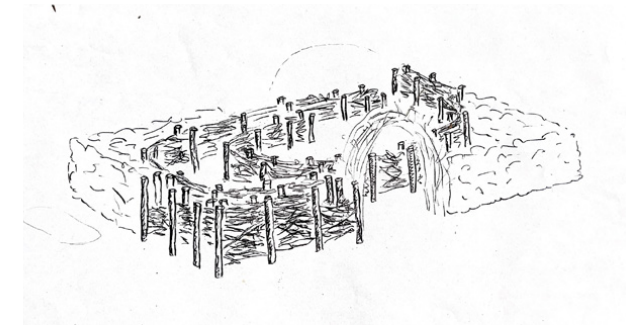
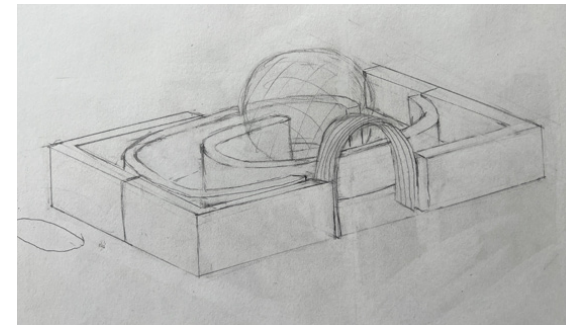
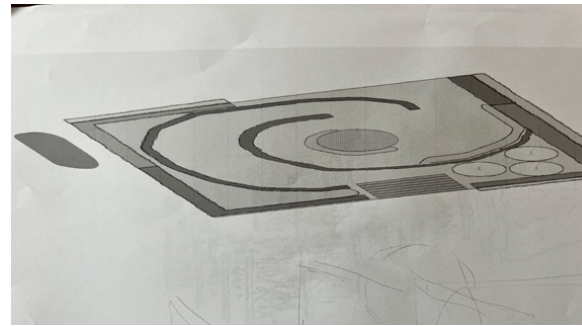
# CONCEPTUAL GARDEN | RHS HAMPTON COURT GLOBAL IMPACT GARDEN | 'NESTING INSTINCT'

## BRIEF

Global Impact Garden for Hampton Court Garden Festival

## CONCEPT

Inspiring visitors to build dead hedges from their own garden prunings, protecting our endangered hedgerow network, capturing carbon in the soil and increasing precious habitats for wildlife.



Concept development using Vectorworks and hand sketching



Visitors walk through the dead hedge corridor, experiencing life as a bird, weaving sticks gathered from the dead hedges into a human nest where they can sit and enjoy nature.



Visual of dead hedge corridor with central woven human nest hand-drawn and rendered with watercolour and Photoshop



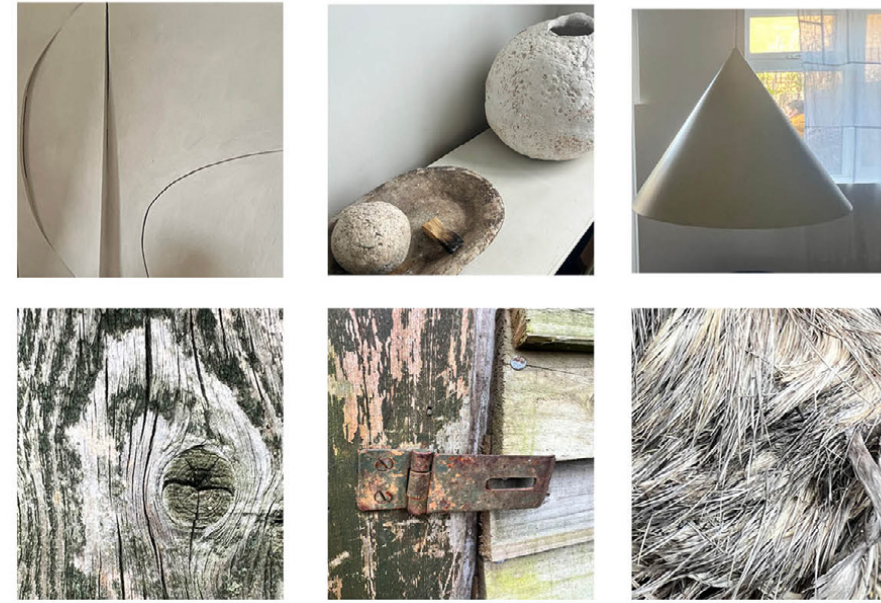
# RESIDENTIAL | WIMBLEDON FAMILY GARDEN | 'A CITY RETREAT'

## BRIEF

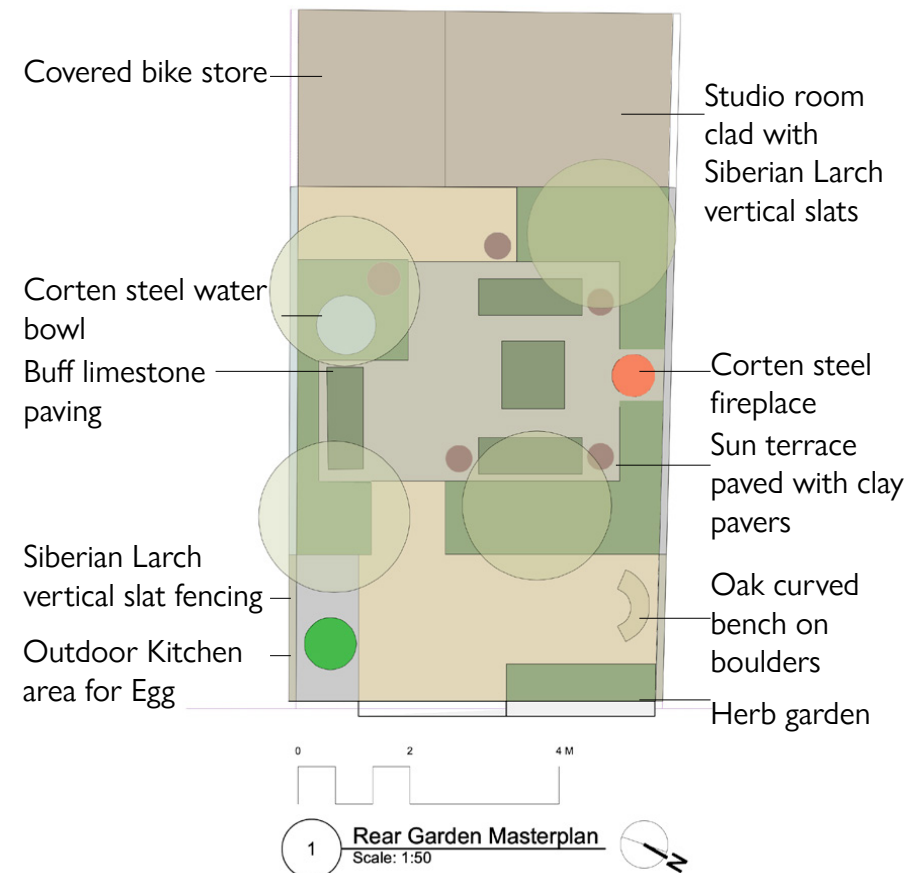
An escape from the city to immerse in nature, reflecting the clients' love of Japandi /wabi sabi principles of design, beauty that is "imperfect, impermanent and incomplete" in nature.

## CONCEPT

A feeling of calm and retreat from city life, inspiration from the client's love of pottery and art, bringing a playful approach to a family garden and allotment.



Mood Board from photos taken of textures and forms in the client's house and allotment



Masterplan drawn to scale in Vectorworks



Perspective sketch of rear garden taken from within the house, hand-drawn and rendered with pen



# ABOUT ME | ALITEX TRADE SHOW GARDEN AT HAMPTON COURT GARDEN FESTIVAL 2022

I led a team of five volunteers to design and plant a flower cutting garden, all sown and grown from seed by us in our gardens, for the Alitex Trade Stand at RHS Hampton Court Garden Festival 2022.

We were awarded 5 Gold Stars by the RHS.







I am passionate about my own garden, growing cut flowers from seed and creating gardens that bring nature, biodiversity and joy to their owners.

Now as a garden designer, I aim to design gardens that grow as thriving sustainable plant communities, attracting wildlife and pollinators, engaging people to notice and celebrate the everyday seasonal change and beauty at all times of the year.

Helier Bowling

t: 07762 438547  
e: helierbowling@gmail.com  
i: garden\_goddess\_uk

## GARDENING & DESIGN CAREER

2023 KLC Diploma in Garden Design (Merit)

Volunteering:

Chelsea Flower Show 2023 - assisted planting for the Saatchi Garden designed by Dave Green.  
Hampton Court Garden Festival 2023 - assisted planting for Tom Massey's RHS Resilient Garden.  
A week at Hampton Court - planting, weeding, potting on.

Awarded RHS 5 Star Trade Stand Award for Alitex Glasshouses at Hampton Court Garden Festival 2022. I led a team of five volunteers designing, sowing and growing a flower cutting garden. I designed the plot, taught the volunteers to sow and grow the seeds/flowers, and then together planted up the garden and styled the greenhouse.

During Covid lockdowns, I wrote and delivered regular zoom classes teaching seed sowing across the world. This has developed into a business, Sows & Grows, delivering online seasonal sowing courses with curated seed collections. I also teach in-person workshops for Alitex, The Global Artichoke and have presented at local Gardeners' Clubs and the Country Living Fair in London.

I have designed, sourced and planted up small planting schemes for various clients. I grow my own flowers for cutting, regularly supplying shops, cafés and private client for events, weddings and photoshoots.

I run a successful gardening instagram account showcasing my own garden, gardening skills and planting as well as encouraging and inspiring others. I have written published articles for Bloom and Grazia magazines, and my own garden is scheduled to be featured in Modern Gardens magazine in April 2024.

## PREVIOUS CAREER

Current	Magistrate/Justice of the Peace for North Hampshire
1996 - 2013	Solicitor at British Gas, Head of Privacy and Consumer Law
1992 -1996	Trainee and Associate Solicitor at Clifford Chance, London
1990	BA (Hons) German and Business Studies, University of Sheffield

## SKILLS

Vectorworks, SketchUp, Photoshop, In Design  
Excellent practical plant, gardening and seed sowing knowledge

## INTERESTS

Gardening, water colour painting,  
life drawing, cooking, knitting and piano