



KRISTIN IVANOVA

Sustainable design portfolio

ABOUT ME



EDUCATION

BA(Hons) INTERIOR DESIGN

KLC / West Dean College
2021-2022

MEng(Hons) CIVIL AND ARCHITECTURAL ENGINEERING

University of Bath
2012-2017

SKILLS

REVIT

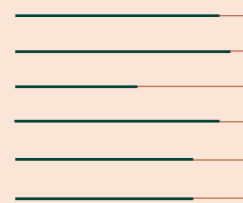
AutoCAD

Vectorworks

SketchUp / Layout

Adobe InDesign

Adobe Photoshop



INTERESTS

Reclamation and repurposing

Art and Craft

Live music

Wine tasting

Travelling

Exploring the outdoors

DESIGN INTERESTS

I am passionate about low carbon interior designs through adopting reclaimed and natural materials to create flexible spaces that develop with the needs of the end users. With a background in structural and facade engineering, my strong understanding of construction principles enables me to experiment with adaptation of spaces to create aesthetically and experientially compelling, as well as functional designs. My key design and research interests can be divided into the following three categories.

As part of my studies at KLC, I also undertook research into the adoption of Circular Economy for interior design applications. The research can be made available on request.



WASTE REDUCTION &
MATERIAL REUSE



SOCIAL & EMOTIONAL
DURABILITY



SPATIAL FLEXIBILITY &
FUTURE ADAPTABILITY

CONTENTS

DESIGN PROJECTS 4

SECTION 1: COMMERCIAL DESIGN

SECTION 2: SOCIAL DESIGN

TECHNICAL DETAILS 10

PRECEDENT DETAIL STUDIES

STAIRCASE DESIGN

SECTION 1:

Design projects

SECTION 1:

DESIGN PROJECT 1

RETAIL DESIGN

CLIENT

MAUD & MABEL

BRIEF

"A compelling, unique, and innovative design proposal for a retail space in the year 2041"

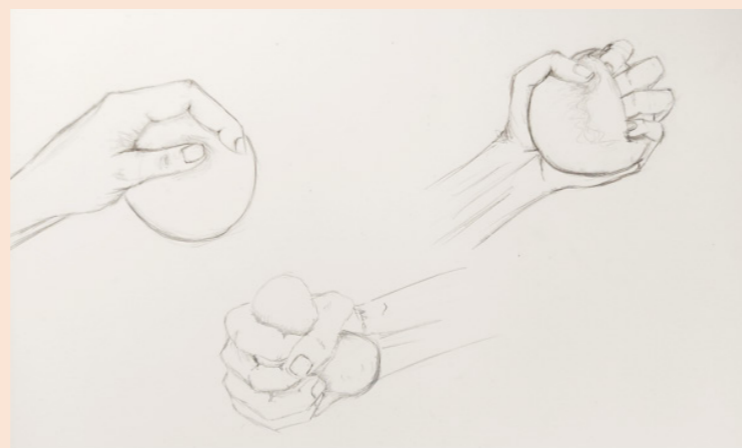
PROJECT SUMMARY

Concept: Disconnect to reconnect

To make the design 'compelling' and 'unique', this project will look to fill in the gaps left behind from the future development and catering for the public's need to detox from technology. Physical clay workshops offer the perfect technology free opportunity to separate from busy London and build connection with others, including makers and artists.

This project demonstrates concept development and application.

Sketches and models inspired by the physical connection between the clay and the maker.



Exploration of shape and form focusing on the imprint left by the maker on the clay.



SECTION 1:

DESIGN PROJECT 1

RETAIL DESIGN

CLIENT
MAUD & MABEL

BRIEF
"A compelling, unique, and innovative design proposal for a retail space in the year 2041"

PROJECT SUMMARY

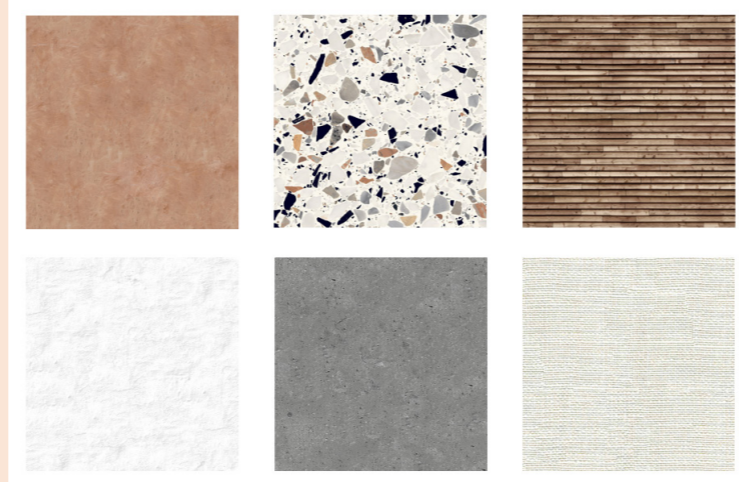
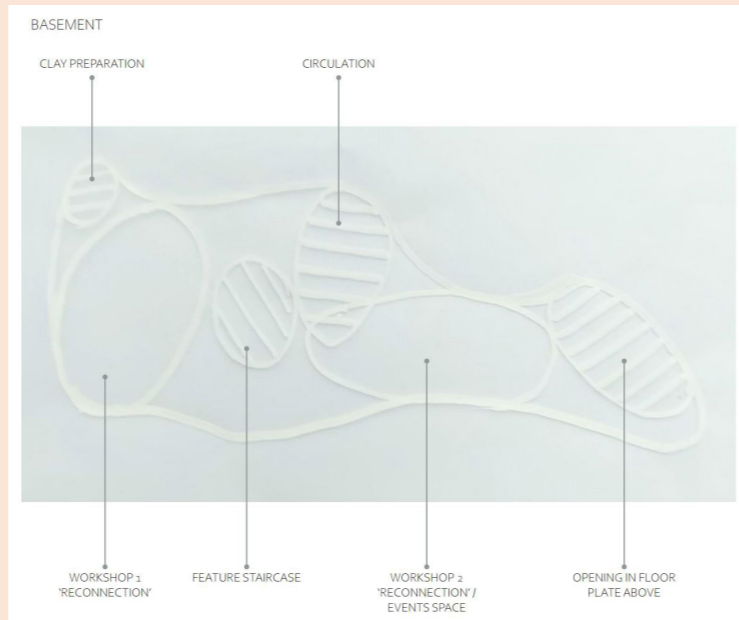
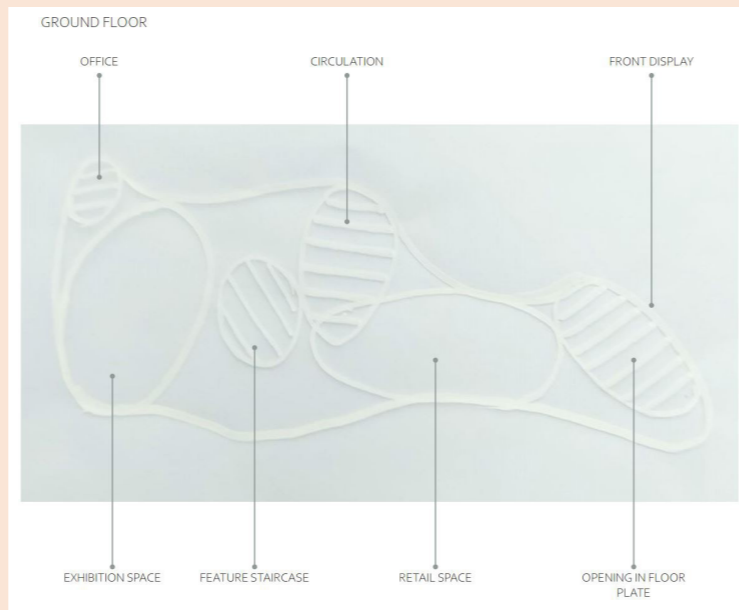
Concept: Disconnect to reconnect

To make the design 'compelling' and 'unique', this project will look to fill in the gaps left behind from the future development and catering for the public's need to detox from technology. Physical clay workshops offer the perfect technology free opportunity to separate from busy London and build connection with others, including makers and artists.

This project demonstrates concept development and application.

Adopting the forms in derived from the clay models to inform the space layout.

Material palette inspired by the history of the brand (clay, wood & textiles). Wherever possible reclaimed materials where specified.



Renders of the modelled space using Revit.

VIEW FROM ENTRANCE



VIEW INTO WORKSHOP 2



VIEW INTO KILN / GLAZING AREA



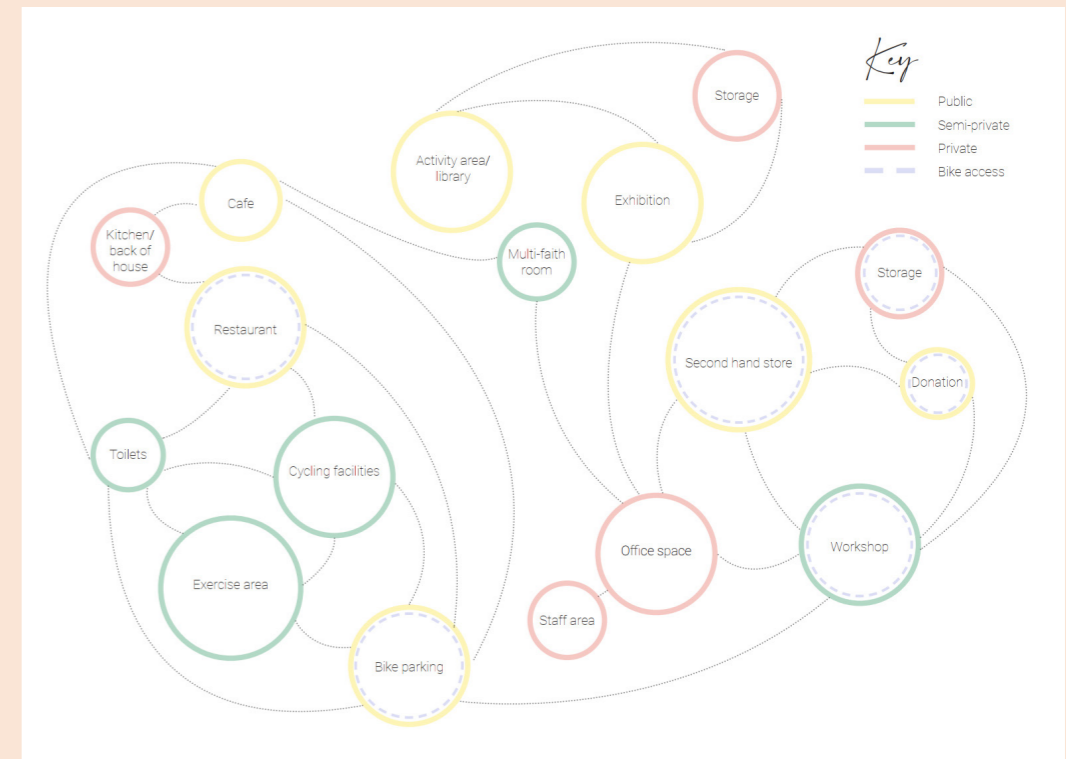
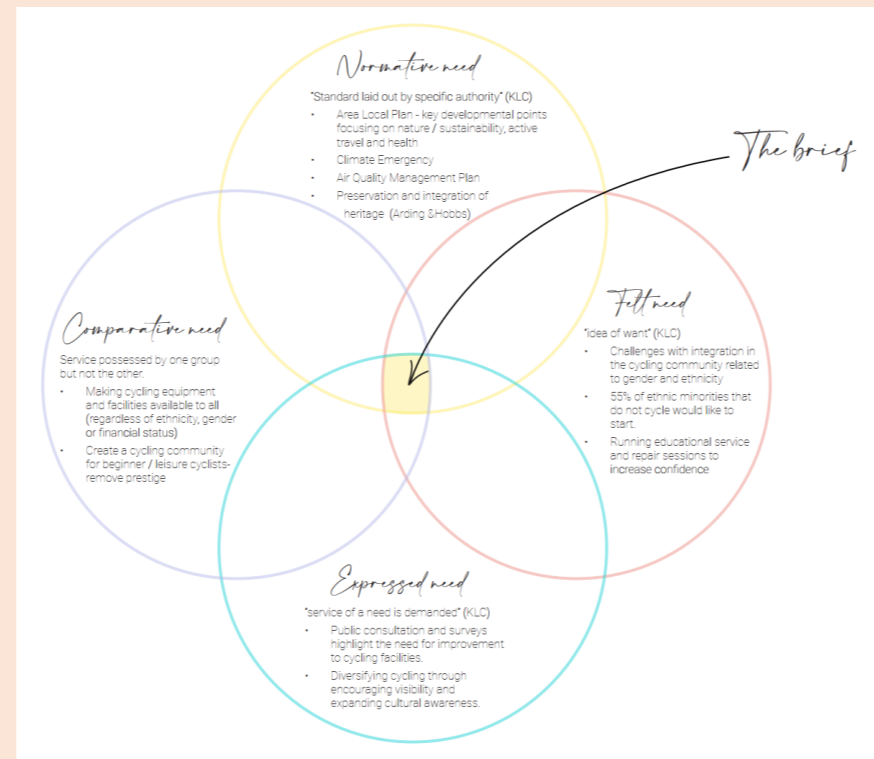
SECTION 1:

DESIGN PROJECT 2

SOCIAL DESIGN

Left: Brief development adopting Bradshaw's taxonomy of Social Need.

Right: Diagrammatic representation of the proposed programme & key adjacencies.



CLIENT
WANDSWORTH COUNCIL

BRIEF
Design two storeys of the Arding & Hobbs building to accommodate functions addressing a social need.

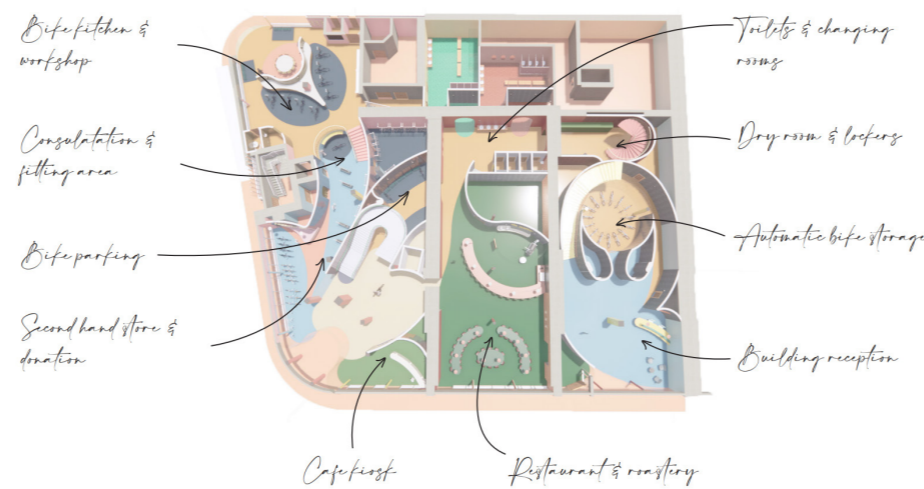
PROJECT SUMMARY
Concept: What's behind the curtain?

This project focused on enabling the increasing of cycling in Clapham Junction and the surrounding area through creating an inclusive cycling centre that breaks down the cultural, social and financial barrier that may prevent the uptake of cycling.

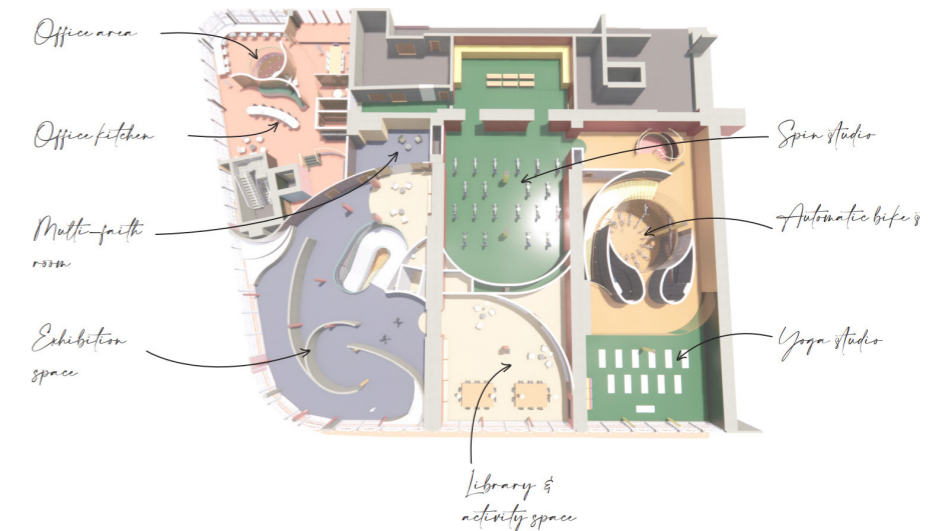
This project focusses on identifying a social need and creating a space that currently does not exist.

Programme translated in the Ground and First floors of the Arding and Hobbs building.

GROUND FLOOR



FIRST FLOOR

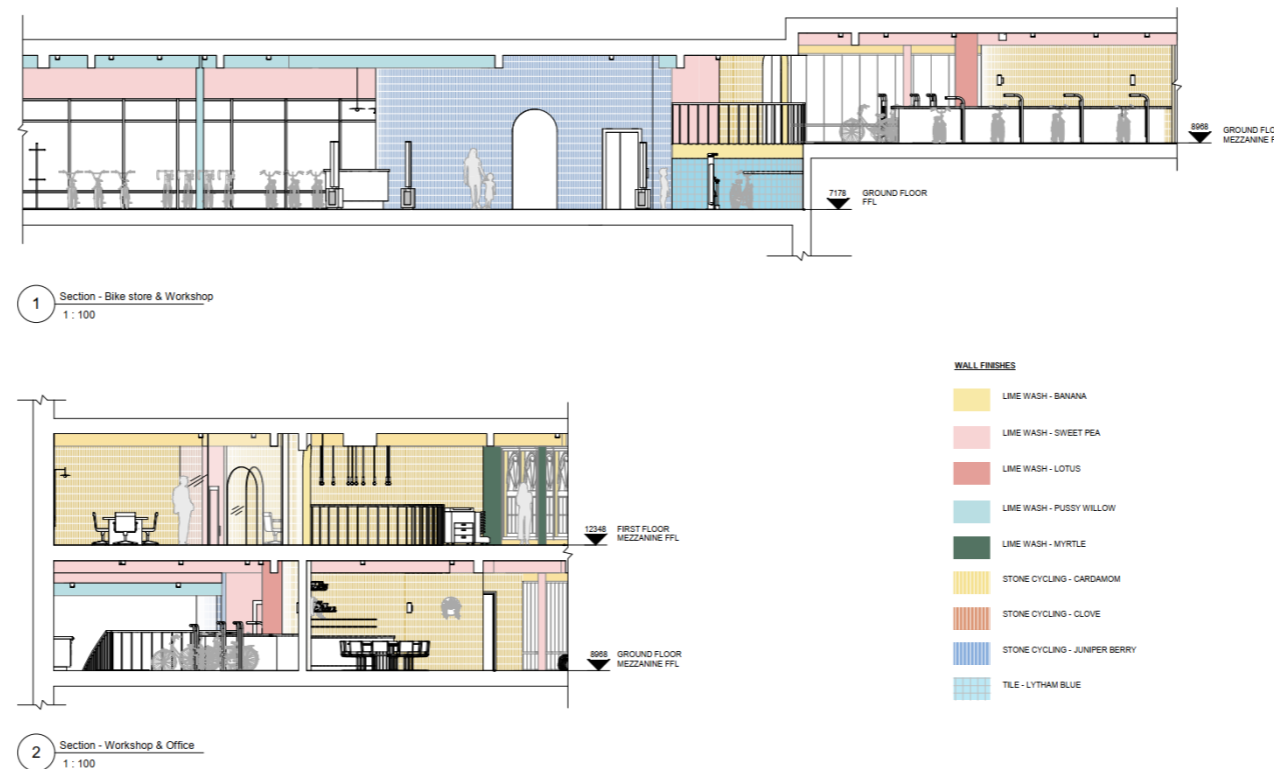


SECTION 1: DESIGN PROJECT 2

SOCIAL DESIGN

Left: sections through the bike store, workshop and office areas.

Right: material palette for the bike store and workshop. All materials were specified with sustainability in mind.



CLIENT
WANDSWORTH COUNCIL

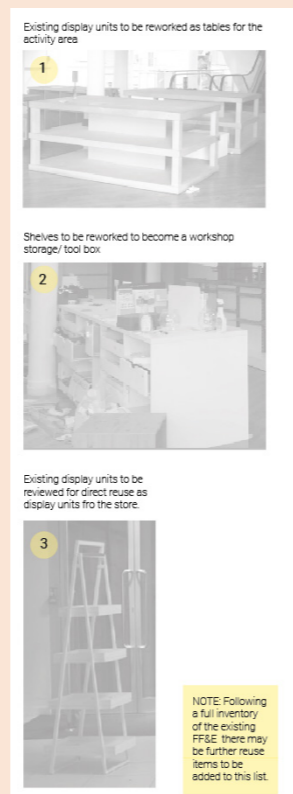
BRIEF
Design two storeys of the Arding & Hobbs building to accommodate functions addressing a social need.

PROJECT SUMMARY
Concept: What's behind the curtain?

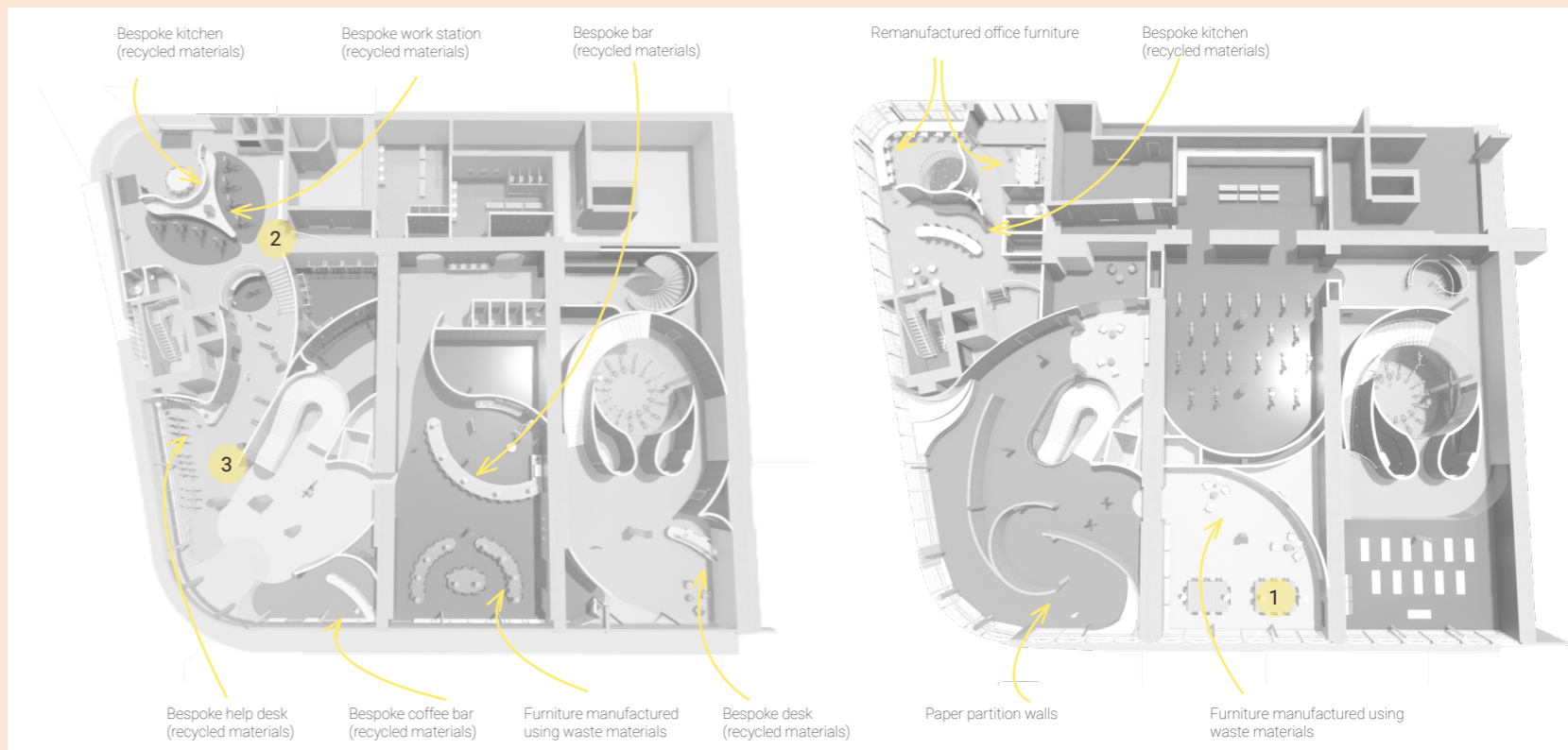
This project focused on enabling the increasing of cycling in Clapham Junction and the surrounding area through creating an inclusive cycling centre that breaks down the cultural, social and financial barrier that may prevent the uptake of cycling.

This project focusses on identifying a social need and creating a space that currently does not exist.

The FF&E specified for this projects focused on reusing existing furniture as a priority and wherever possible new furniture (including bespoke pieces) is either remanufactured or made from post consumer waste.



NOTE: Following a full inventory of the existing FF&E there may be further reuse items to be added to this list.



SECTION 1:

DESIGN PROJECT 2

SOCIAL DESIGN

CLIENT
WANDSWORTH COUNCIL

BRIEF
Design two storeys of the Arding & Hobbs building to accommodate functions addressing a social need.

PROJECT SUMMARY
Concept: What's behind the curtain?

This project focused on enabling the increasing of cycling in Clapham Junction and the surrounding area through creating an inclusive cycling centre that breaks down the cultural, social and financial barrier that may prevent the uptake of cycling.

This project focusses on identifying a social need and creating a space that currently does not exist.

Renders of the modelled space using Revit and Enscape, edited in Photoshop.
Visuals present a different outlook on sustainable design.

STORE & DONATION DESK



CONSULTATION & BIKE FITTING



BIKE KITCHEN & WORKSHOP

SECTION 2:

Technical details

SECTION 2: PRECEDENT DETAIL STUDIES

TASK OVERVIEW

The precedent details study focusses on the evaluation of individual interior design details. The aim of this task was to explore and critically evaluate different interior design details highlighting different material transitions and transition types.

The evaluation focusses on the materiality and its suitability for the application, the processes that the individual components have undergone, as well as the likely construction and assembly process. The details are also reviewed from a sustainability perspective, as well as a reflection on how the detail fits in the wider project scheme.

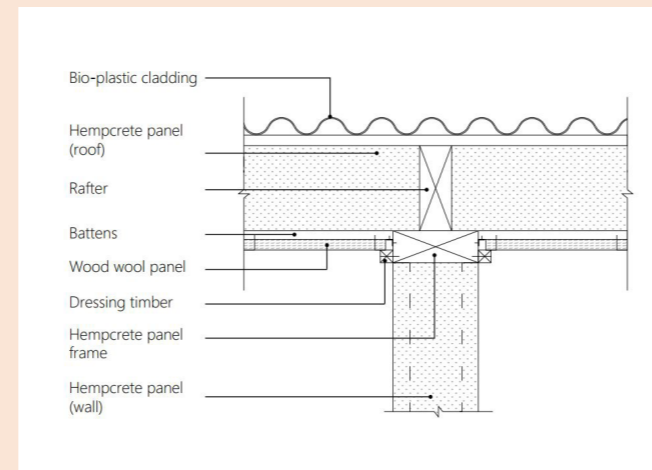
At the end of each precedent detail study, the information required to communicate the design is outlined, alongside a closing commentary and the key takeaways that could be used to inform the commercial staircase design.

Detail focusing on modular hempcrete construction.

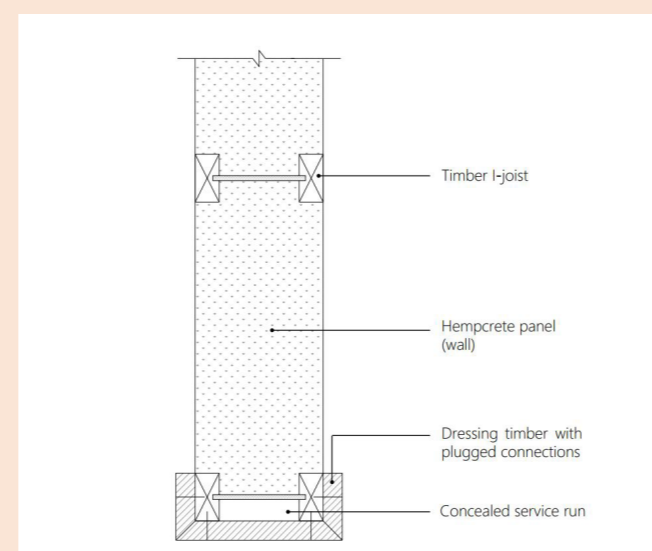
Precedent project: Flat House, Practice Architecture



DETAIL 1.



DETAIL 2.

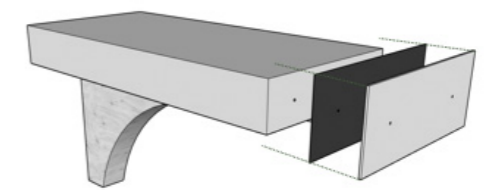


Assembly process for internal coping / cable tray.

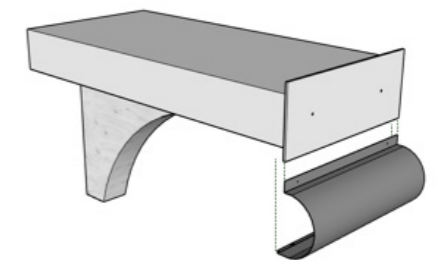
Precedent project: Maggie's Centre, Heatherwick Architects



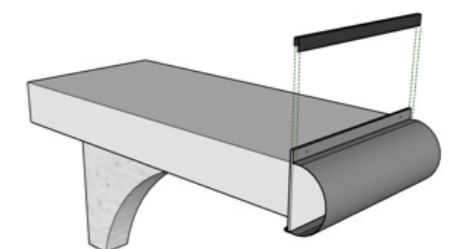
ASSEMBLY PROCESS



1. Attach fascia board to CLT slab.



2. Bent metal plate attached (could be rotated in place if services are present).



3. Connect bent cover plate.

SECTION 2: STAIRCASE DESIGN

CLIENT
MAUD & MABEL

OVERVIEW

This section presents the development of the detail design of the feature staircase proposed as part of the commercial design project module presented in section 1 of this portfolio.

The materiality adopted of the staircase follows the material palette for the wider scheme.

The following three themes were derived from this study and adopted for the design development of the stair case.

CURVATURE - Curvature of the extruded piece of clay

LAYERS - Layers and folds formed in clay

SCULPTURE - Subtractive technique to carve and form clay

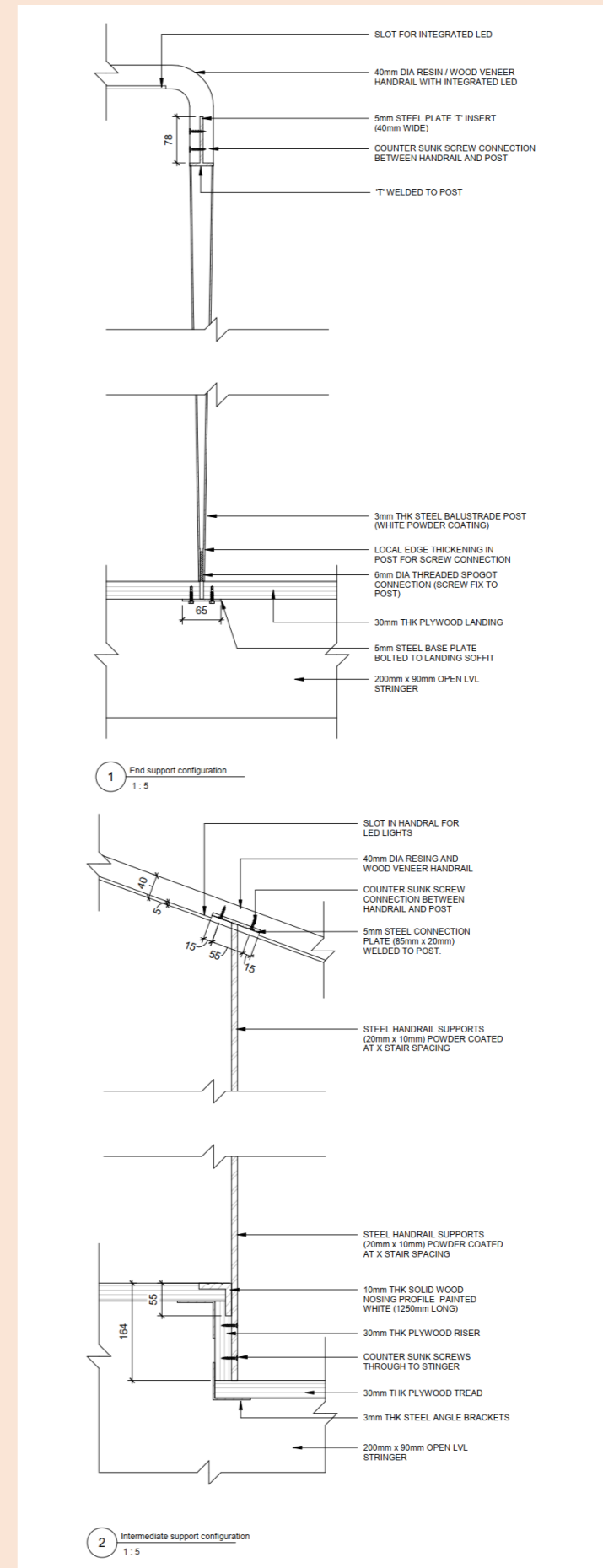
Render of the feature staircase modelled in Revit.



Physical model of the staircase treads and risers made from card and oak veneer.



Details developed as part of the feature staircase design project following guidance provided in Building Regulations Approved Documents.





KRISTIN IVANOVA

EMAIL : kristin.ivanova@yahoo.com

WEBSITE : ki-design.myportfolio.com