

KLC SCHOOL OF DESIGN

ACADEMIC

PORTFOLIO

ELLEN APPLEBY

STUDIO
APPLEBY

PROJECT 09 - RESIDENTIAL DESIGN
PAGE 4-7

PROJECT 08 - GROUP PROJECT
PAGE 8-11

PROJECT 07 - COMMERCIAL PROJECT
PAGE 12-15

PROJECT 6 - DETAILED WORKING
DRAWINGS PAGE 16-19

PROJECT 5 - POP-UP STAND
PAGE 20 - 23

PROJECT 3 - RESIDENTIAL DESIGN
PAGE 24-27



RENDERED UPPER FLOOR PLAN



RENDERED LOWER FLOOR PLAN



RENDERED VIEW OF DINING SPACE

west wittering | residential project

BRIEF | RESEARCH | CONCEPT | DESIGN



The BRIEF

Retired couple, Hamish and Vivienne Pringle are relocating to West Wittering on the South Coast of England.

The couple have purchased a first and second floor flat which requires a full design. They require 3 bedrooms, 2 with en-suites. A working art studio for Hamish, and space to entertain friends and family.

The RESEARCH

Research was undertaken on the location and interests of the clients. Whilst also looking at the precedent designs. Key out-takes including the natural beauty of the surrounding areas. With influences of natural tones and hues where combined created a calming relaxing connection to the external surroundings. From the clients interests; nautical touches from materials such as timber and rope along with form and simplistic function.

The CONCEPT

Alluring Views came from the clients decision to move for a change of scenery. The meaning on the concept is powerfully attractive and to be taken in by the eye. It will allow for wow moments to be created throughout the design and the creation of vignettes to be set up.

The DESIGN

Making the most of the natural light within the property the open plan living area has been located on the upper floor.

Throughout the materials have been kept to a natural palette using timber planks and wool carpets. The colour schemes have all been in keeping with the natural inspiration, of blues, greens and beige, creating a soft connection to the scenery.

The full height glazing along the east elevation is the backdrop for the kitchen and dining area. As requested by the client the living space, is slightly secluded from the rest of the open area by two partial curved walls. Creating a soft frame and separation linking back to the concept.

Transitioning to the lower floor, the staircase has become the wow feature of the home. With a circular cut out through the floors and an angular staircase connecting the levels.

The bedrooms have been located by the windows, with the master and bed 2 facing south, allowing the warm light in.



RENDERED VIEW OF ENTRANCE



RENDERED VIEW OF OPEN PLAN AREA



RENDERED VIEW OF STAIRS

- SKILLS**
- Renders
 - Live Client Presentation
 - Space Planning
 - FF&E
 - Research



RENDERED VIEW OF TERRACE



RENDERED VIEW OF MASTER BEDROOM



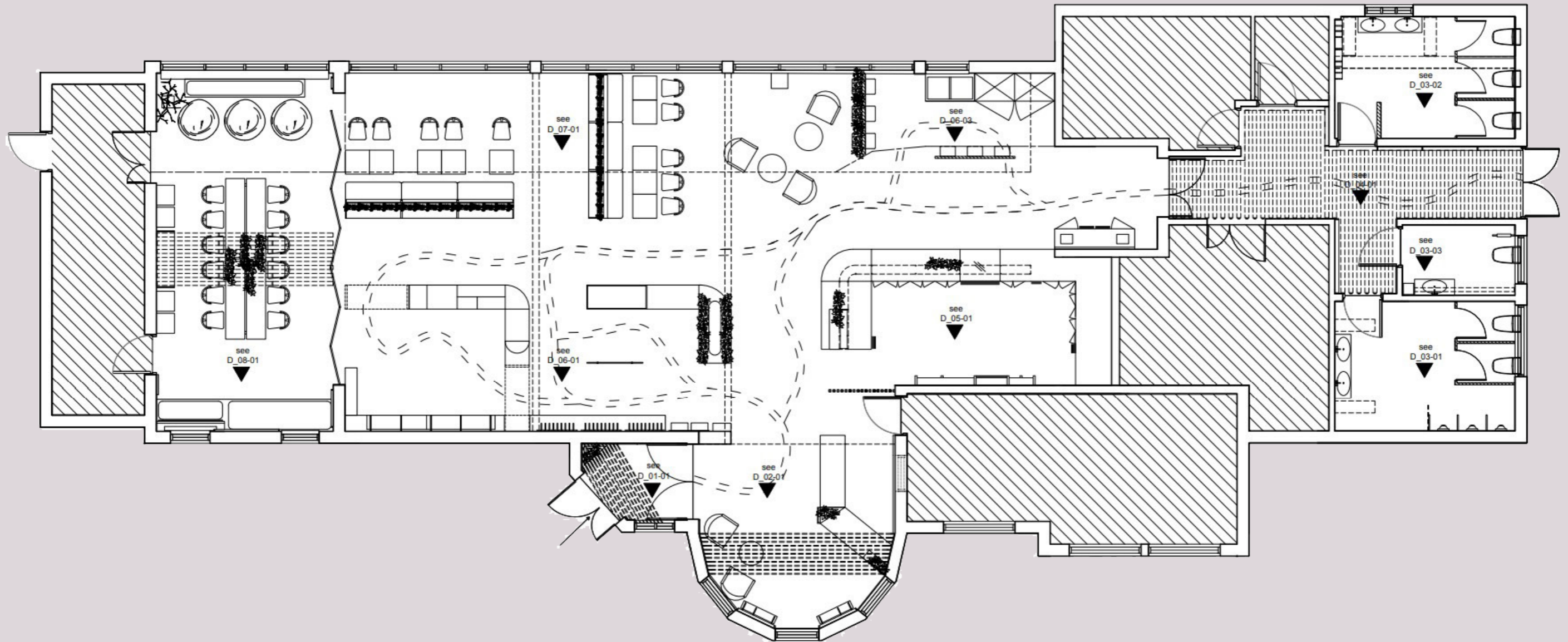
RENDERED VIEW OF BEDROOM 3



RENDERED VIEW OF ENTRANCE



RENDERED VIEW OF CAFE



FLOOR PLAN

nature reserve essex | group project

BRIEF | RESEARCH | CONCEPT | DESIGN



The BRIEF

Essex Wildlife Trust are one of the leading conservation charity, committed to protecting wildlife and inspiring a lifelong love of nature. They enlisted Interior Designers to update and modernise their site at Hanningfield Reservoir Nature Discovery Park. With a budget of £80,000 and working as a team the aim of the design is to create a practical and interactive space. Incorporating the surrounding landscape and playing with theatre and drama.

The RESEARCH

Research was divided up amongst the team looking at the brand, end users, location, current trends and precedent projects. Personally, I researched into sustainability and biophilic designs, both key elements requested by the client. Key points from this include the importance of living plants within a space and the impact they have on the user. Improved mood, health and concentration.

The CONCEPT

Encompassing Nature was concept selected to inspire the design. It was developed through the importance that nature had on this design and this client. The meaning of Encompassing is to allow the nature surround and be one with the object.

The DESIGN

The final design created a warm, welcoming atmosphere to welcome visitors. At the entrance a combination of timber and moss has been used to create an immediate connection and scene of what to expect from the space.

As the visitors move through into the main hall. Where we combined the retail and cafe spaces in the centre space. Keeping the design flexible to suit the needs of the client the retail displays have all been made bespoke, and moveable on castors. Introducing greenery to the displays helped to create the encompassing feeling, bringing nature into the space.

A light installation has been hung from the ceiling mimicing the path of the wildlife walk. The aim of this was to guide people through the space, encouraging them to view the whole space. To compliment this, the pattern has been repeated on the floor.

To make the most of the large glazed wall in the main hall and to create some drama to the space we decided to paint in a contrasting colour a frame around the windows.











The design came within budget and we managed to get a discount for the client from the lighting supplier.



SOURCING BOARD FOR EDUCATION HUB



RENDERED VIEW OF RETAIL SPACE

<p>Material: Birch Plywood Dimensions: H810 x W600 x D600 mm</p> <p>3.5 m² Beech Plywood for Modular Unit Supplier: Hanson Plywood Sheet Sizes: 1220 x 2440 x 18 mm @ £51.75 per m²</p> <p>4 x Wheels for Modular Unit Supplier: Ross Handling Product Name: Black Modern Furniture Castor with Brake @ £8.27 each</p>	 <p>TBA</p>  <p>£181.13</p>  <p>£33.08</p>	<p>1 x Modular Retail Unit with Flexible Shelves Material: Birch Plywood Dimensions: H1250 x W1200 x D600 mm</p> <p>4.5 m² Beech Plywood for Modular Unit Supplier: Hanson Plywood Sheet Sizes: 1220 x 2440 x 18 mm @ £51.75 per m²</p> <p>4 x Wheels for Modular Unit Supplier: Ross Handling Product Name: Black Modern Furniture Castor with Brake @ £8.27 each</p>	 <p>TBA</p>  <p>£232.88</p>  <p>£33.08</p>
<p>1 x Modular Retail Unit with Semi-Circular Displays Material: Birch Plywood Dimensions: H1630 x W800 x D600 mm</p> <p>5 m² Beech Plywood for Modular Unit Supplier: Hanson Plywood Sheet Sizes: 1220 x 2440 x 18 mm @ £51.75 per m²</p>	 <p>TBA</p>  <p>£258.75</p>	<p>1 x Modular Corner Retail Unit Material: Birch Plywood Dimensions: H1750 x W1200 x D600 mm</p> <p>5.973 m² Beech Plywood for Modular Unit Supplier: Hanson Plywood Sheet Sizes: 1220 x 2440 x 18 mm @ £51.75 per m²</p>	 <p>TBA</p>  <p>£300.00</p>

ESTI PC DOCUMENT

- SKILLS**
- Team Work
 - Design development
 - Live Client Presentation
 - Space Planning
 - FF&E
 - Sourcing
 - Esti PC
 - Working to a budget



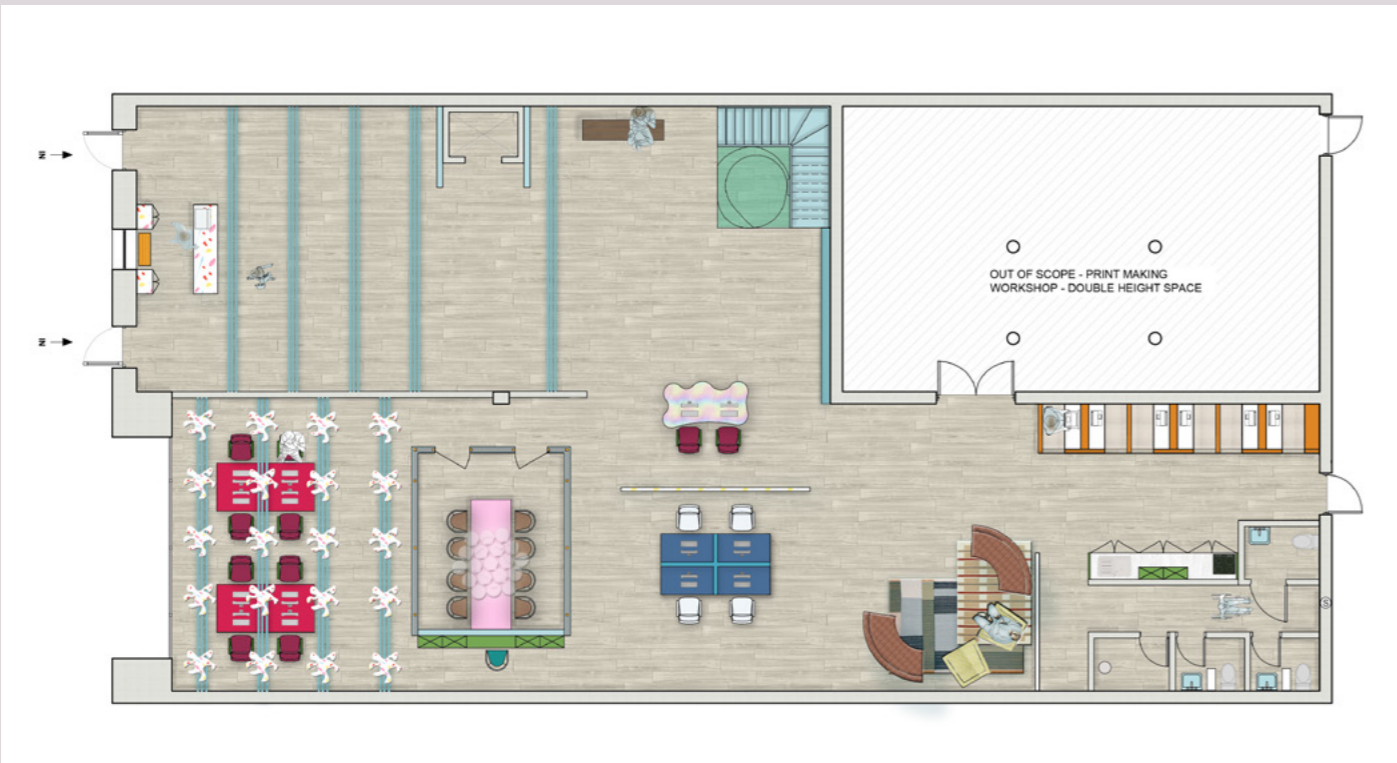
SOURCING BOARD FOR CAFE



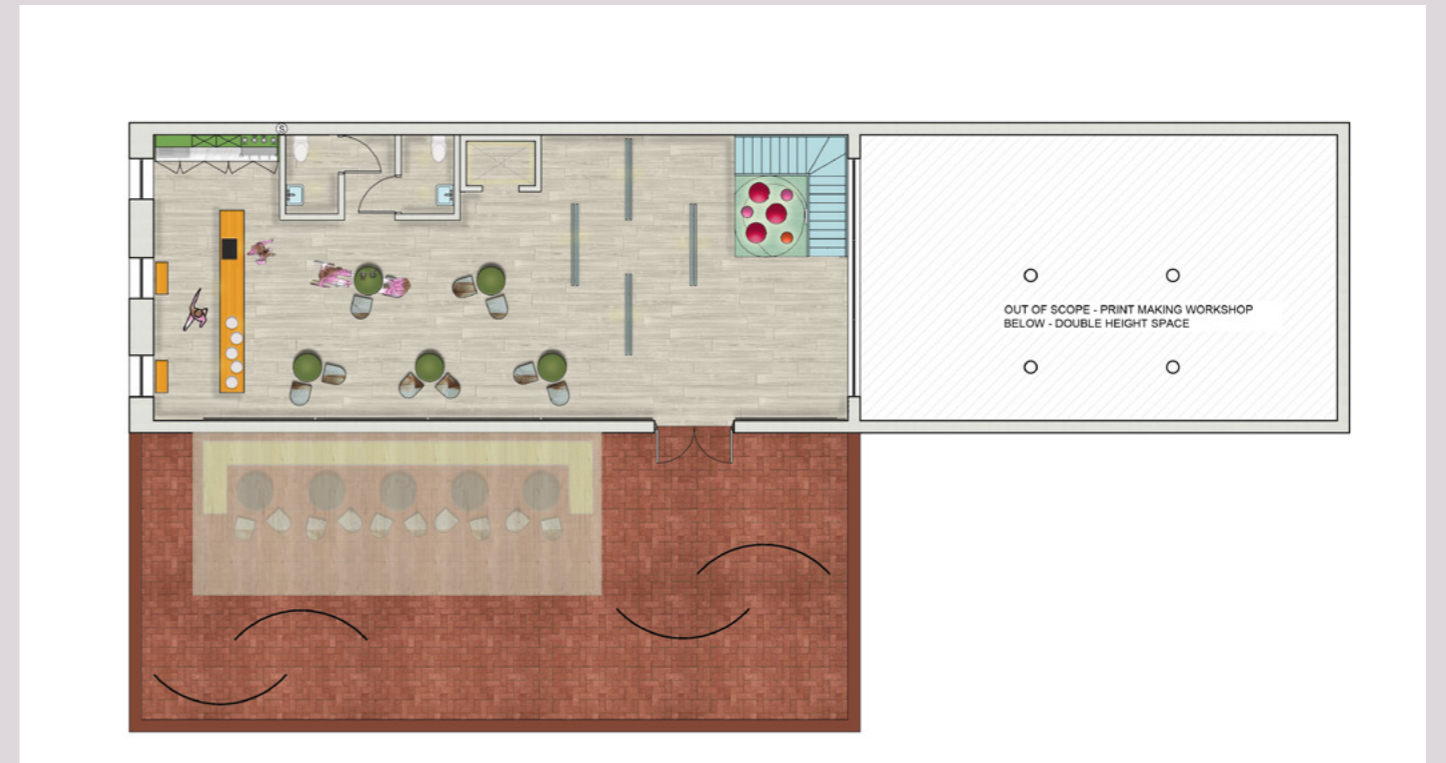
SKETCH MODELS



3D MODEL DEVELOPMENT



RENDERED FLOOR PLAN



RENDERED FLOOR PLAN

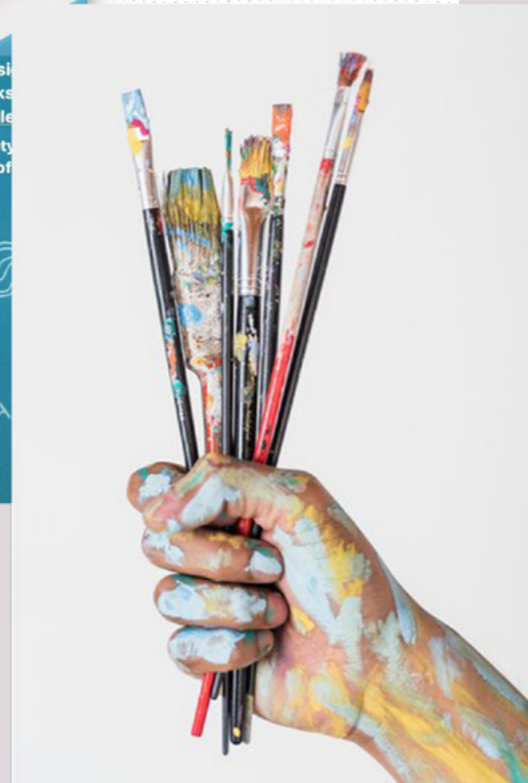
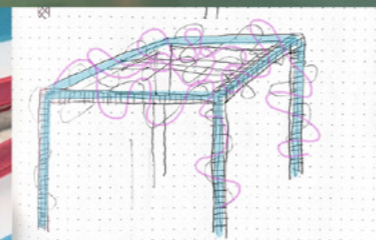
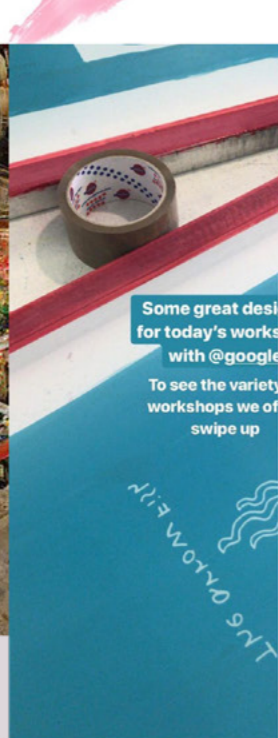
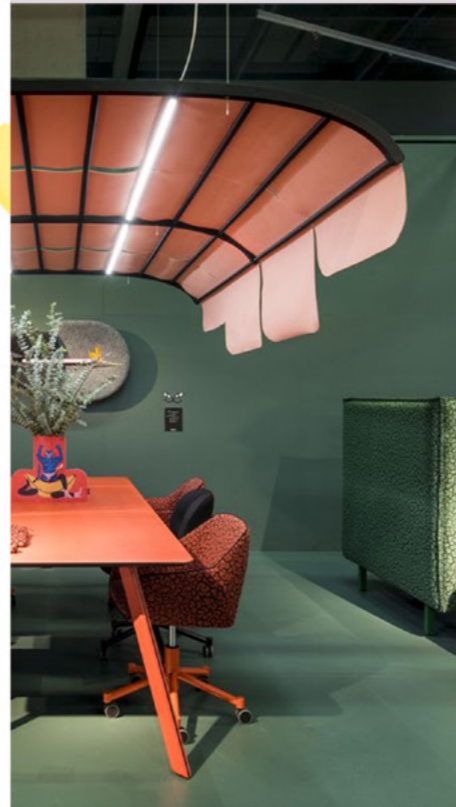


RENDERED VIEW OF GALLERY

multi use space | commercial project

BRIEF | RESEARCH | CONCEPT | DESIGN

GETTING
TO KNOW
FRED HIGGINSON



The BRIEF

Is to design a space to house a variety of amenities, including office and co-working space, a cafe to serve both eat in and takeaway for 10-12 people. A retail space between 20-30 m2. Along with general facilities, such as storage, cleaning, and washing up.

The RESEARCH

Broad research was undertaken on the locations of where the new gallery will be situated as well as where Print Club London's current base is. Both locations had similar energies, being populated by young adults with a large night life. Research was also undertaken on precedent projects and competition in the area. Looking at current trend, in which co-working places are more sociable and relaxed.

The CONCEPT

Paint Outside the Lines was inspired by the brands ethos of getting a little messy, and doing things differently. The ideas generated from this to influence to spatial strategy were clustered or circular.

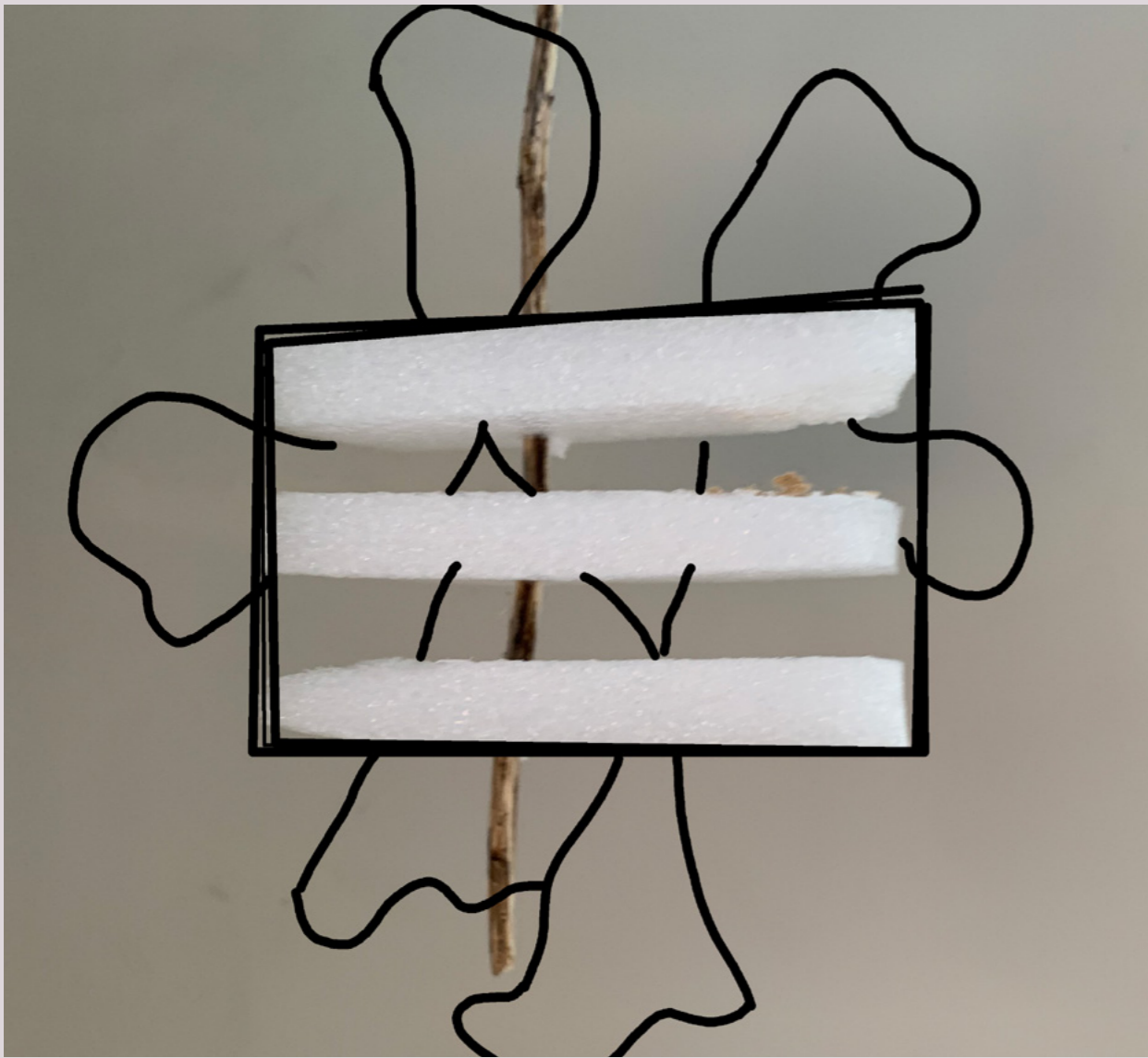
The DESIGN

The space was divided to house the office and co-working space in the lower bottom half of the floor plan. With the main desks located by the full height glazing to allow the most natural, giving the benefits of this to the staff. To the rear of the space we have allowed for mixed co-working space with grouped tables and individual booths. A kitchen and bathroom facilities have been catered for at the rear of the space.

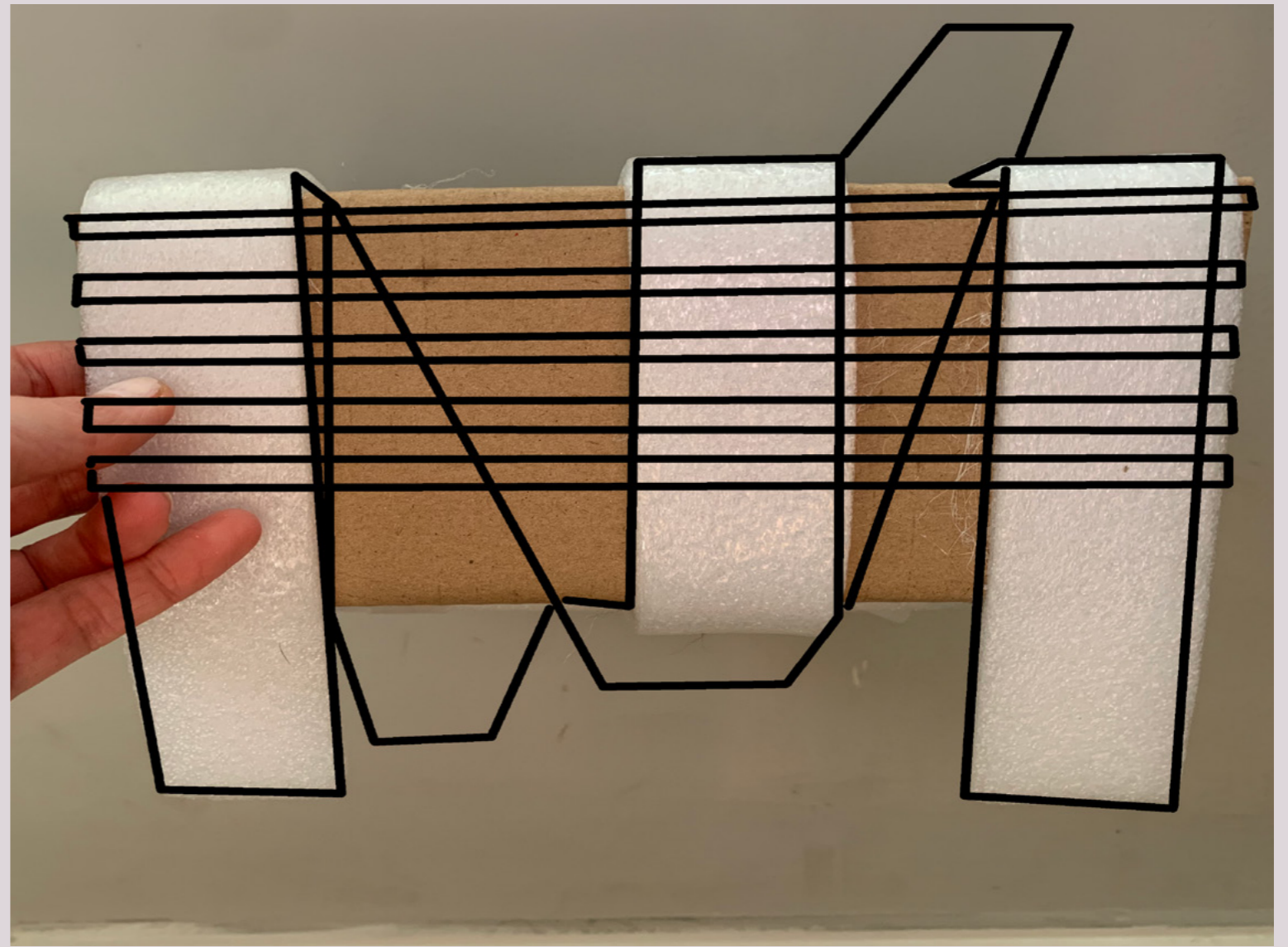
The gallery and retail space is located in top of the ground floor and the first floor allowing for the space required. The artwork has been hung from brightly coloured metal posts allowing them to be walked between and viewed from different angles. The first floor features more of these frames and the cafe by the windows.

The schemes for the space were bold and colourful to reflect the brand and their style. Mixing oranges, greens and blues.

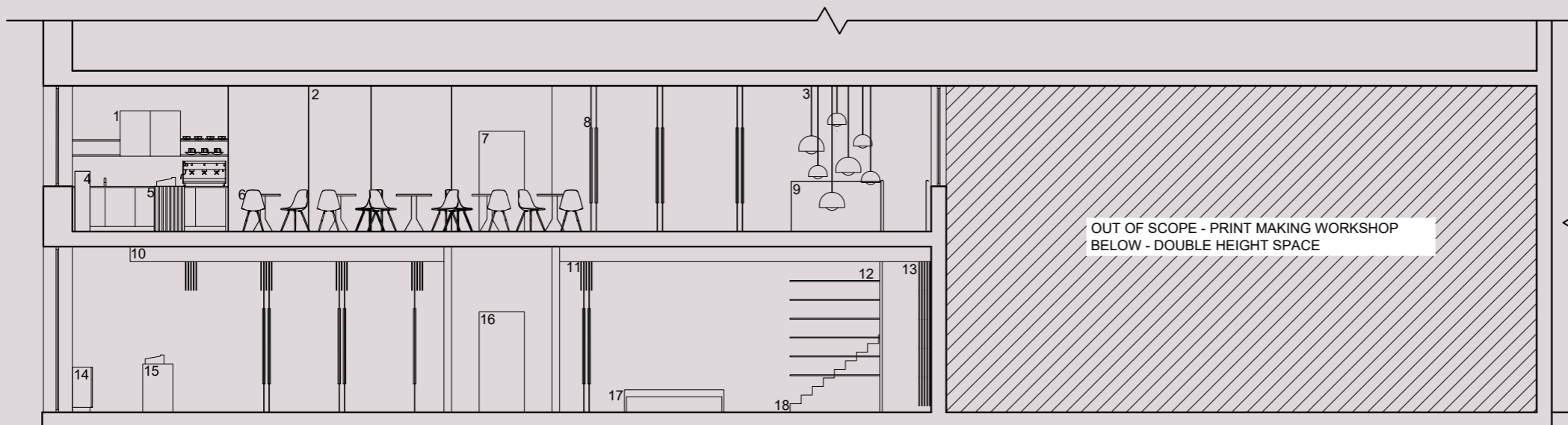
Further interest and detail was created through lighting fixtures to attract attention from the street view. Then from the stairs enticing people further into the space and into the upper floor.



ABSTRACT MODELS



ABSTRACT MODELS



02 SECTION
1:100@A3

SECTION

SKILLS
 -Sample Boards
 -Design Concept
 -CAD drawings
 -Varied Render systems.



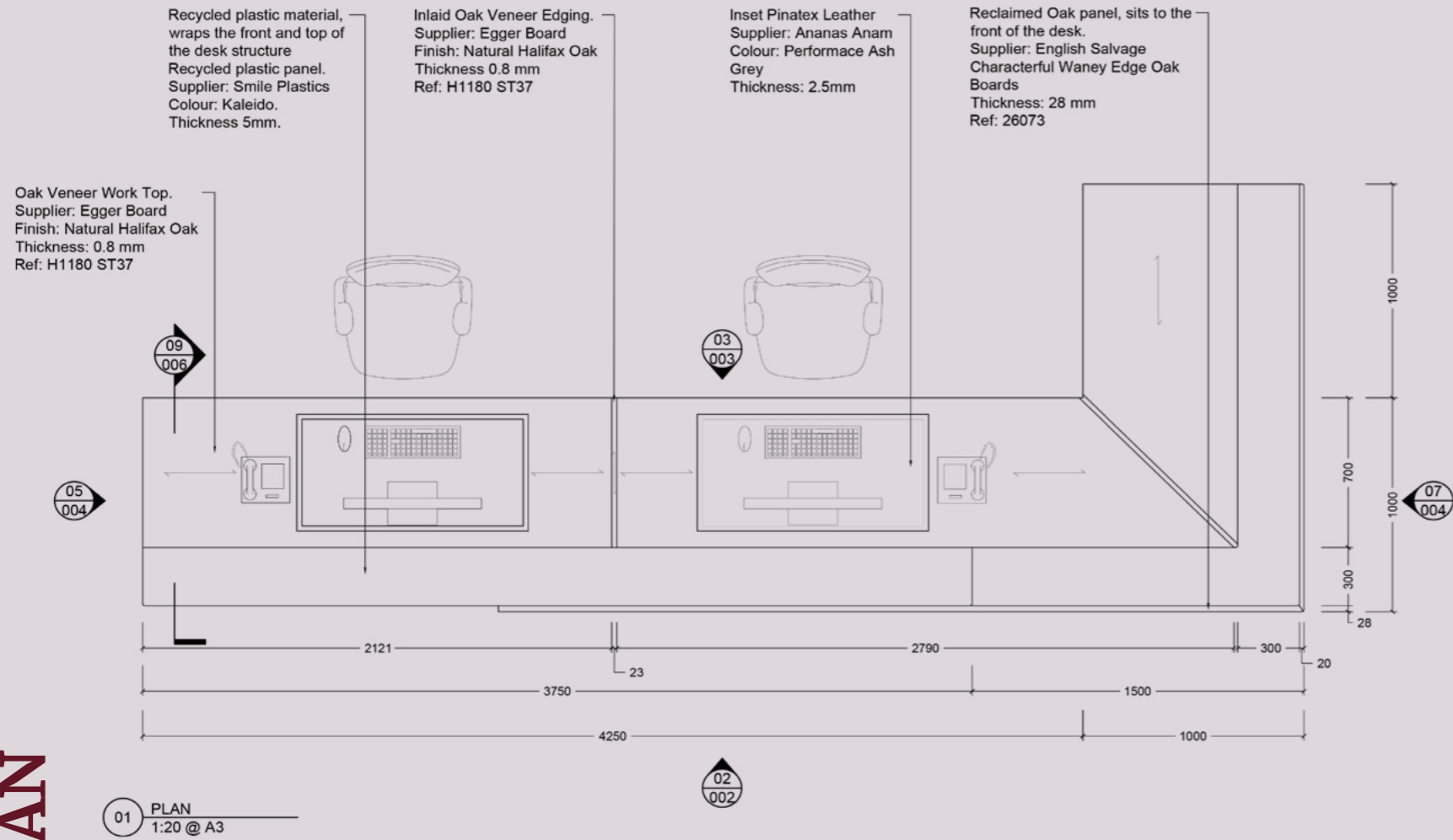
SAMPLE BOARD



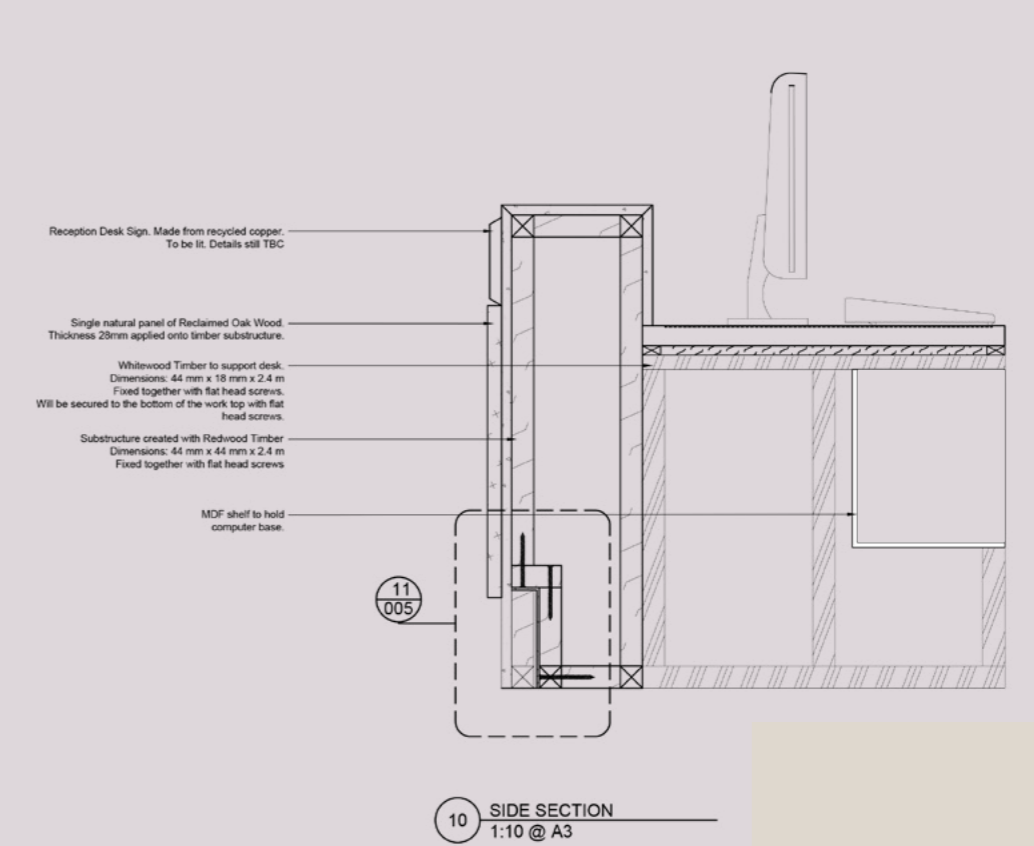
SAMPLE BOARD

PLAN

PLAN DRAWING



SECTION DRAWING



reception desk | detailed working drawings

BRIEF | RESEARCH | DEVELOPMENT | DESIGN



The BRIEF

Is to develop and detail technical working drawings from initial sketches provided.

The desk must accommodate 2 staff members, giving them both comfortable working space and storage.

It must meet regulations and be suitable for wheelchair users and feature a 'Reception@' sign.

The desk must be made of 2-4 materials with at least one being a sustainable option.

The RESEARCH

Research looked into sustainable materials, looking at Smile Plastics. The UK based company work on creating a second use for single use plastics. A sustainability matrix was created to review each material and their properties.

The DEVELOPMENT

Sketches were used to develop the design of this desk, looking at how materials could be used and different shapes applied to the design.

Looking at trends and precedent designs, helped to identify requirements and ways of designing to meet regulations.

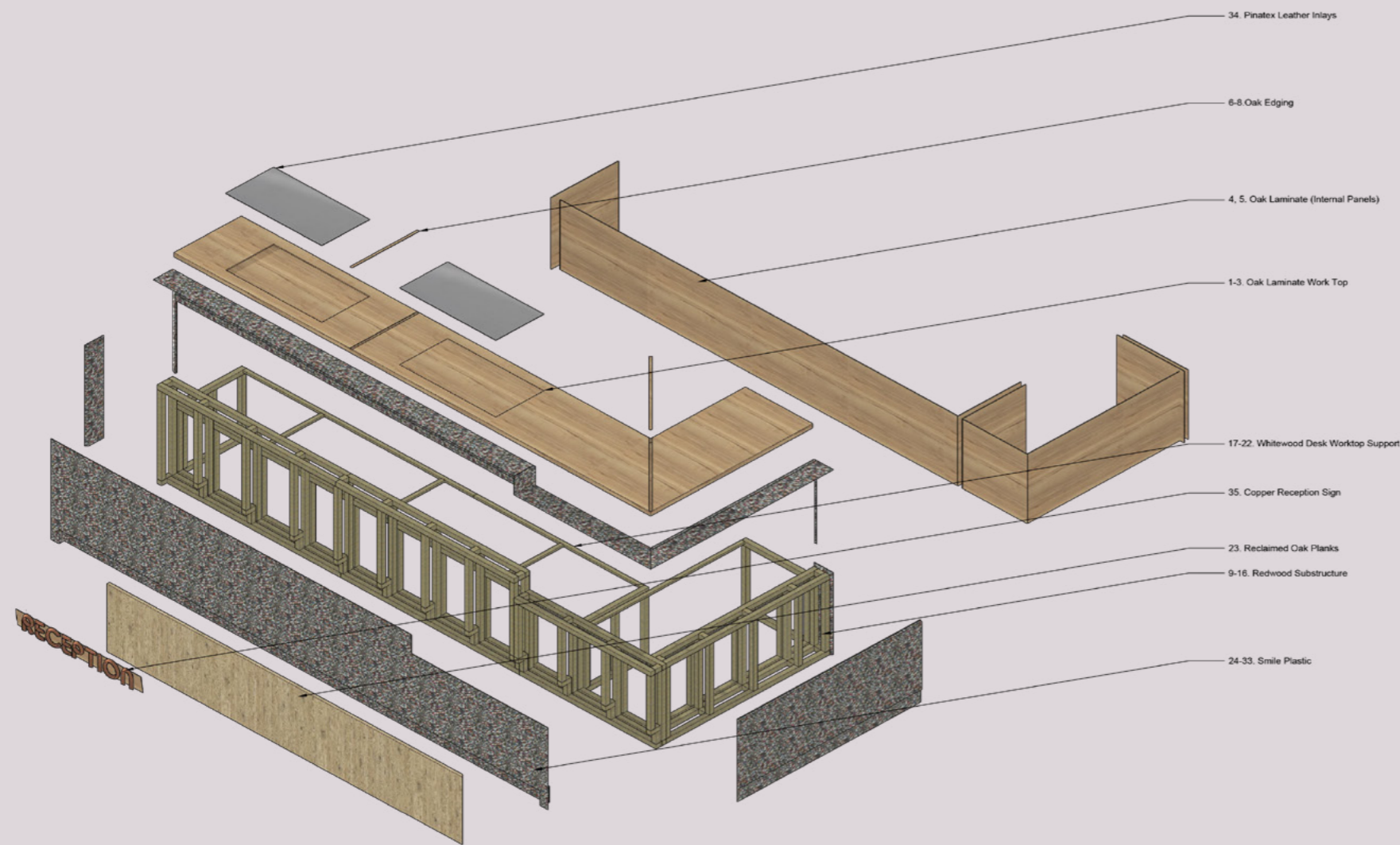
The DESIGN

The final design uses Smile plastics and reclaimed timber to create an eye catching design. Both materials are sustainable and prevent resources being cut down or created.

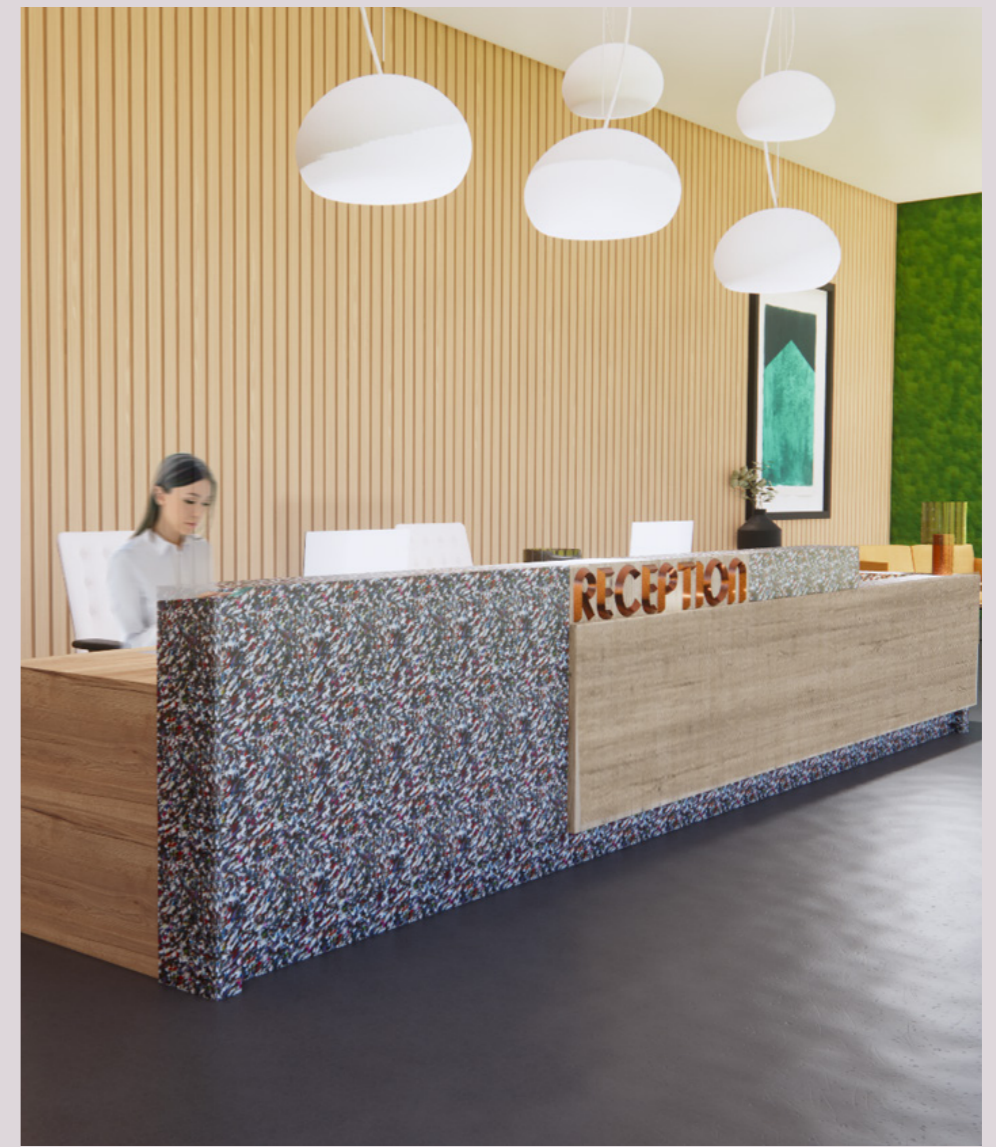
The juxtaposition of the recycled plastics being a new product created by 'rubbish' and the reclaimed wood which has been around for many years allowing the old and new to come together being both modern and timeless.

The clean lines and edges create a sleek look which will compliment the location of London with the high rise glass buildings.

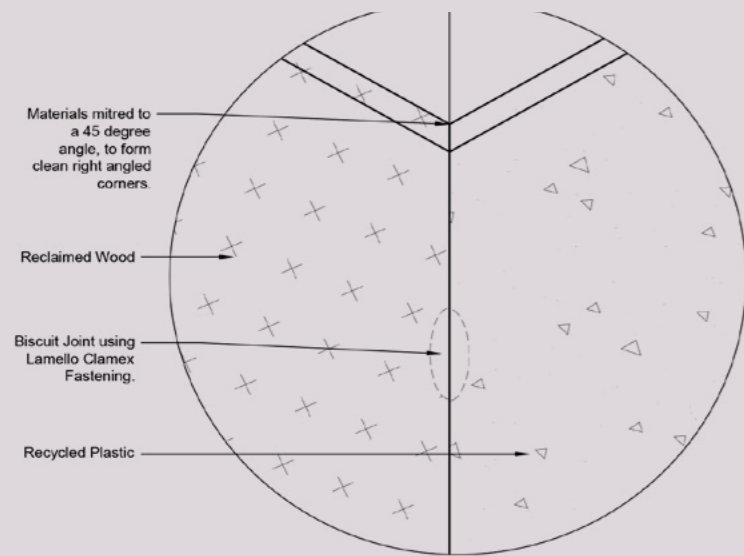
Ergonomics and building regulations were considered in the final design, with the desk being set at 960mm to allow for comfortable working heights. To be suitable for all visitors there is a lower section at 760mm to allow access for wheelchair users.



EXPLODED ISOMETRIC DRAWING

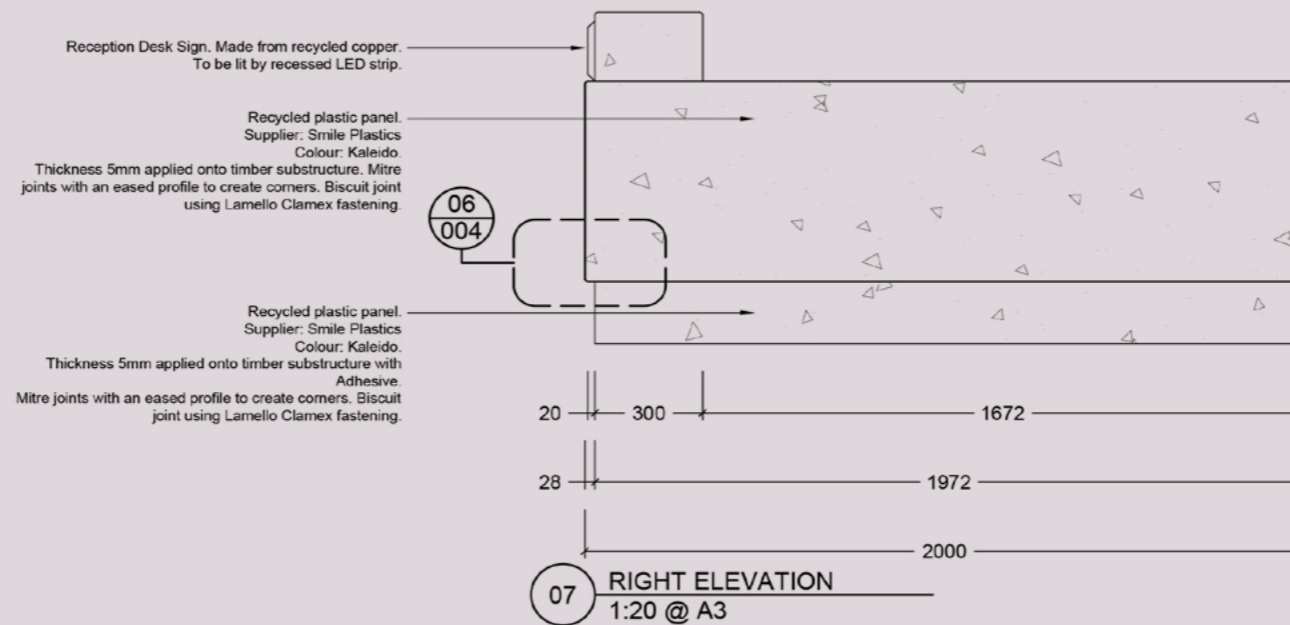


RENDERED VISUAL



06 DETAIL - MITRED EDGES
 1:5 @ A3

DETAIL DRAWINGS



SKILLS
 -Detailed Technical Drawing
 -Joinery Methods
 -Detailed Parts list
 - Rendering software

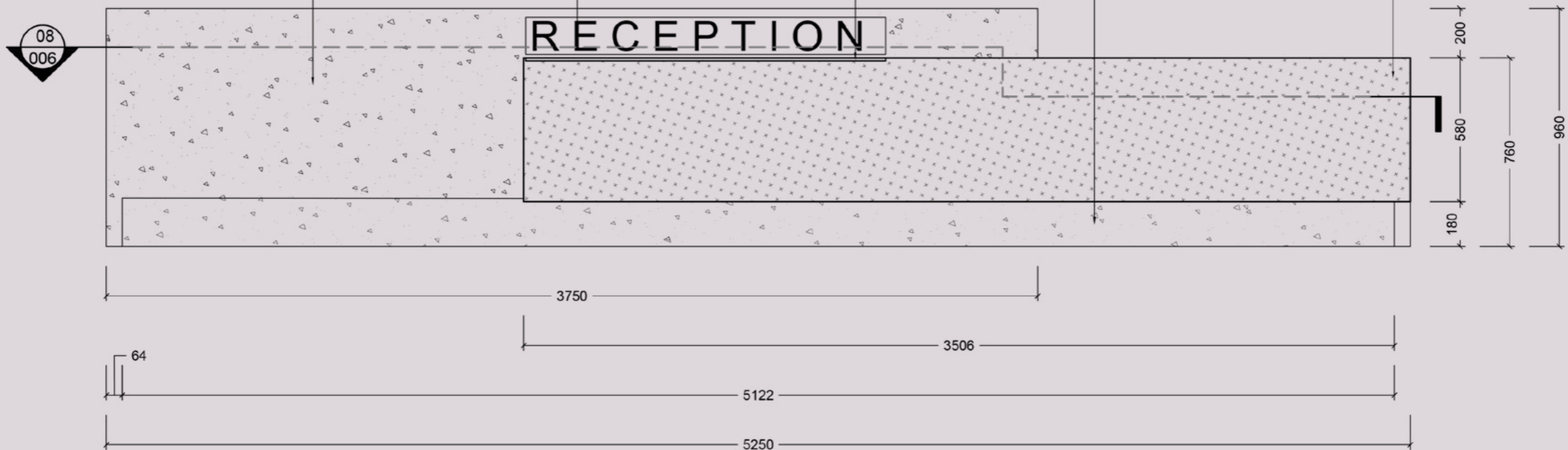
Recycled plastic panel.
 Supplier: Smile Plastics
 Colour: Kaleido.
 Bespoke Size created to fit in one panel.
 Thickness 5mm applied onto timber
 substructure with Adhesive.
 Mitre joints to create sharp clean
 corners, using Lamello Clamex
 fastening.

Copper Reception Sign.
 Thickness of 20 mm.
 Mounted proud of wooden
 surface.
 Fixed with doweling's.

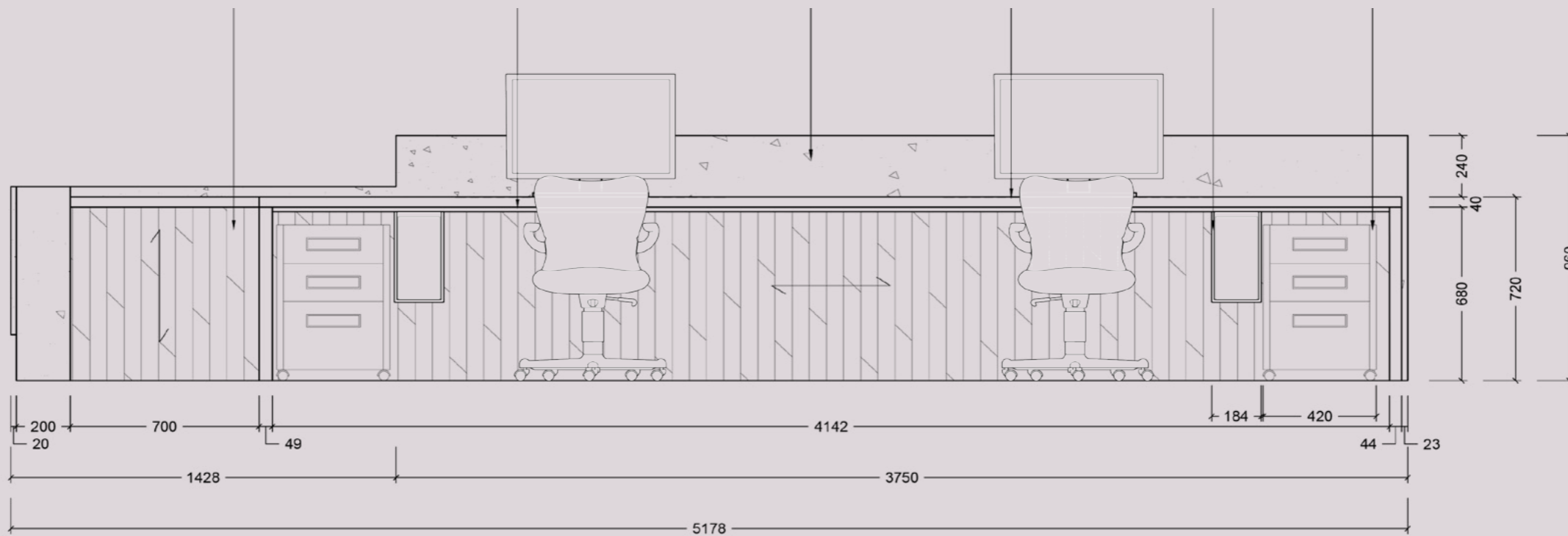
LED strip to highlight sign.
 Recessed down into wood.
 Supplier: Orluna
 Model: Elia Fix
 Thickness: 11.5 mm
 Colour Light: 3000 K

Kick plate, frame set
 55mm back from
 front. Sections as
 shown clad in 5mm
 thick sheets of
 recycled plastic.

Lower counter, made from a
 single natural panel of
 Reclaimed Oak Wood.
 Supplier: English Salvage
 Characterful Waney Edge
 Oak Boards
 Thickness: 28 mm
 Ref: 26073



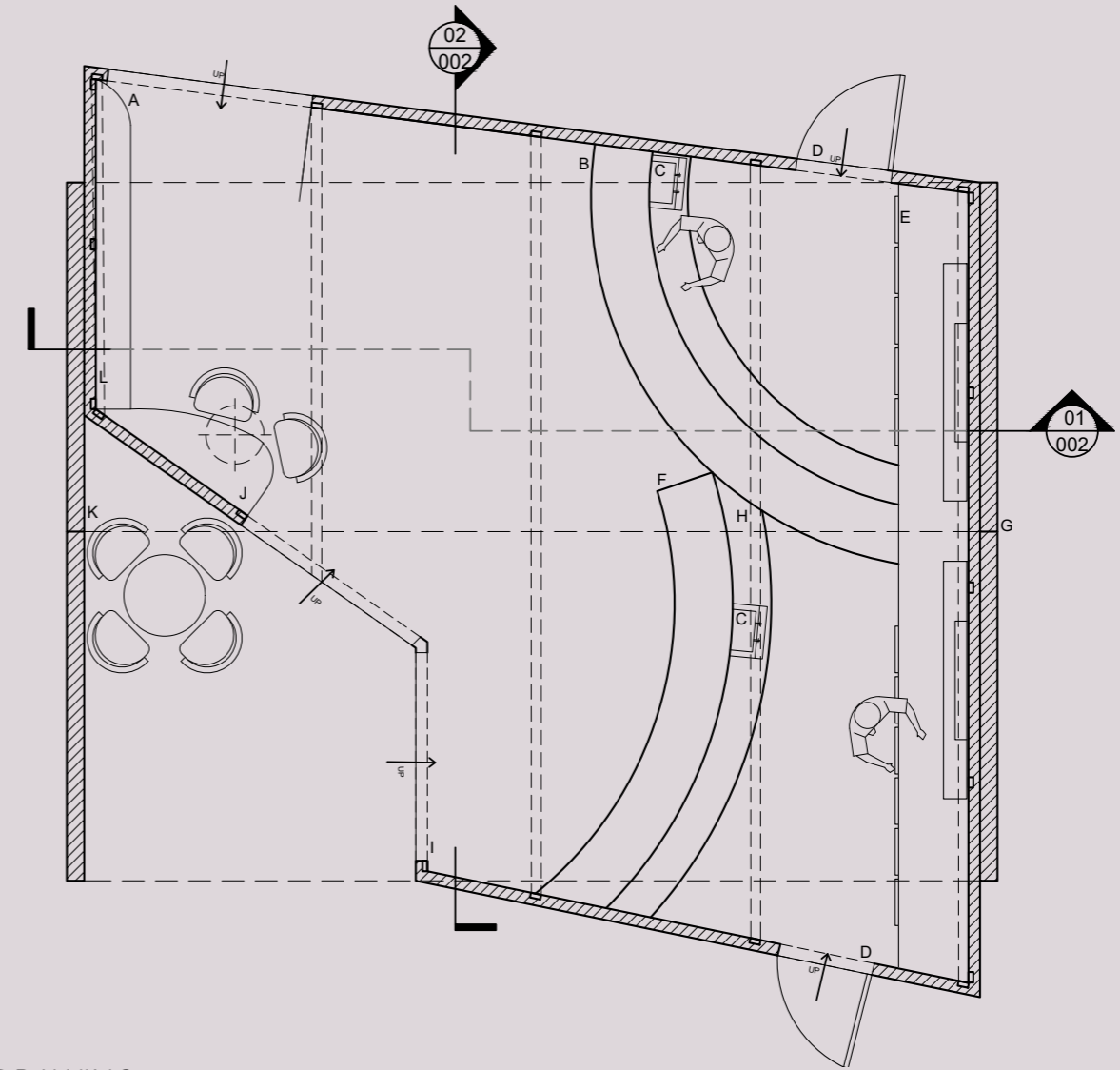
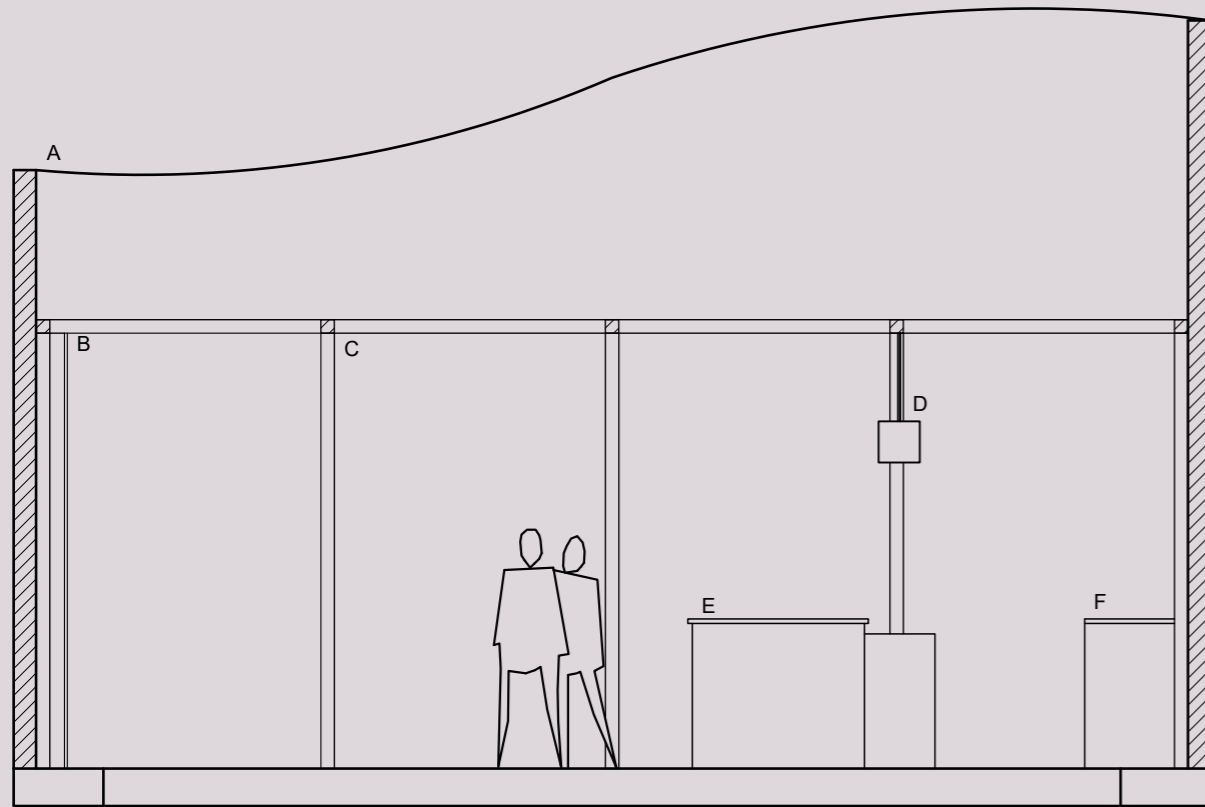
ELEVATION DRAWING



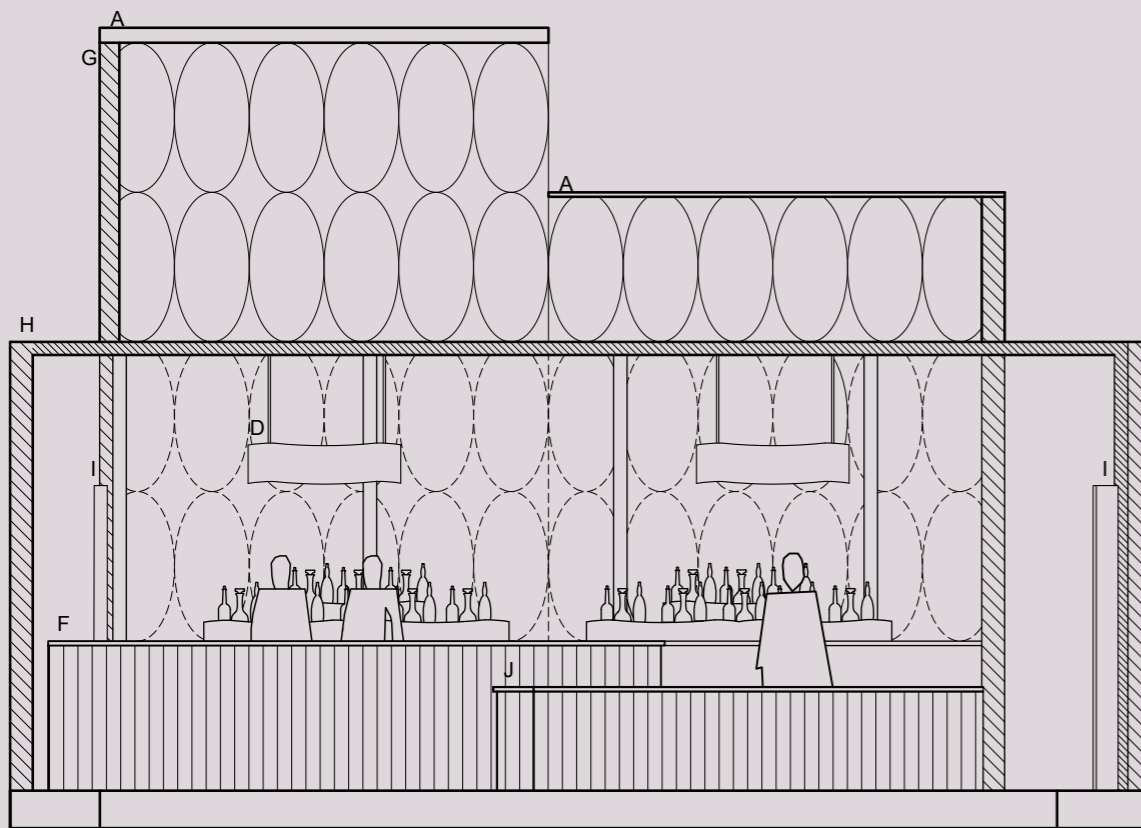
ELEVATION DRAWING



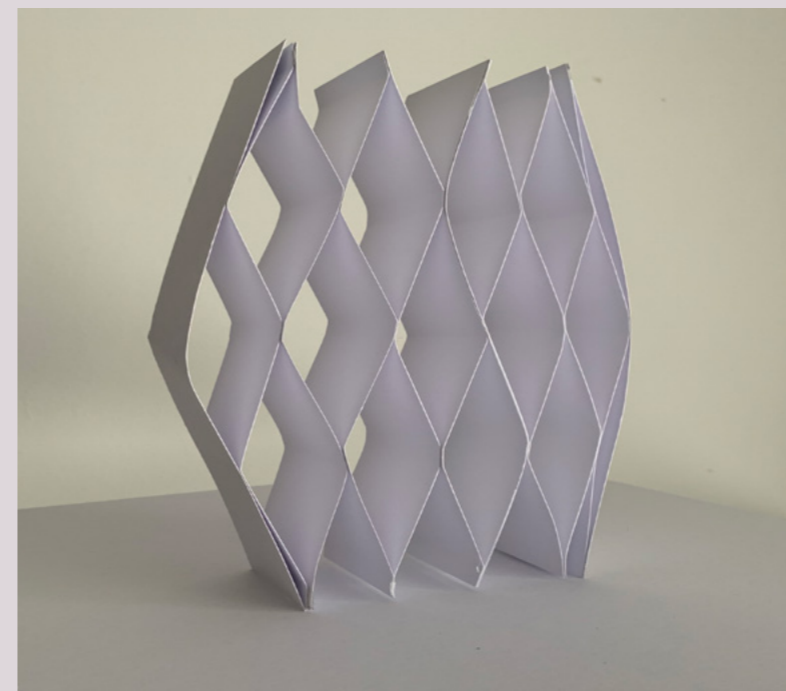
RENDERED VISUAL



PLAN DRAWING



ELEVATION DRAWINGS



SKETCH MODEL

- SKILLS
- CAD drawing
 - In Design
 - Design Rationales
 - Rendering programmes

THROUGH THE LENS

MERCHANT'S HEART FESTIVAL POP-UP BAR

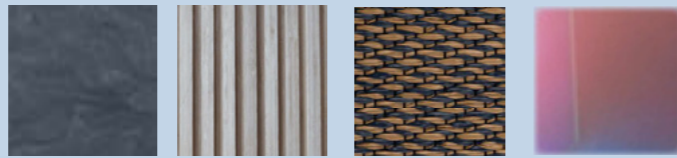
Merchant's Heart require a pop-up space which will represent the brand and their values. The bar needs to stand out from the crowd by being unique and eye catching in order to attract new customers.

The concept **THROUGH THE LENS** is derived from the company's history and branding of sharing drinking cultures from the western world and from Japanese cultures.

The playful nature of the company lends its self to imaginative and joyful design which can be created from this concept playing with the aesthetics for the two cultures.

FINISHES

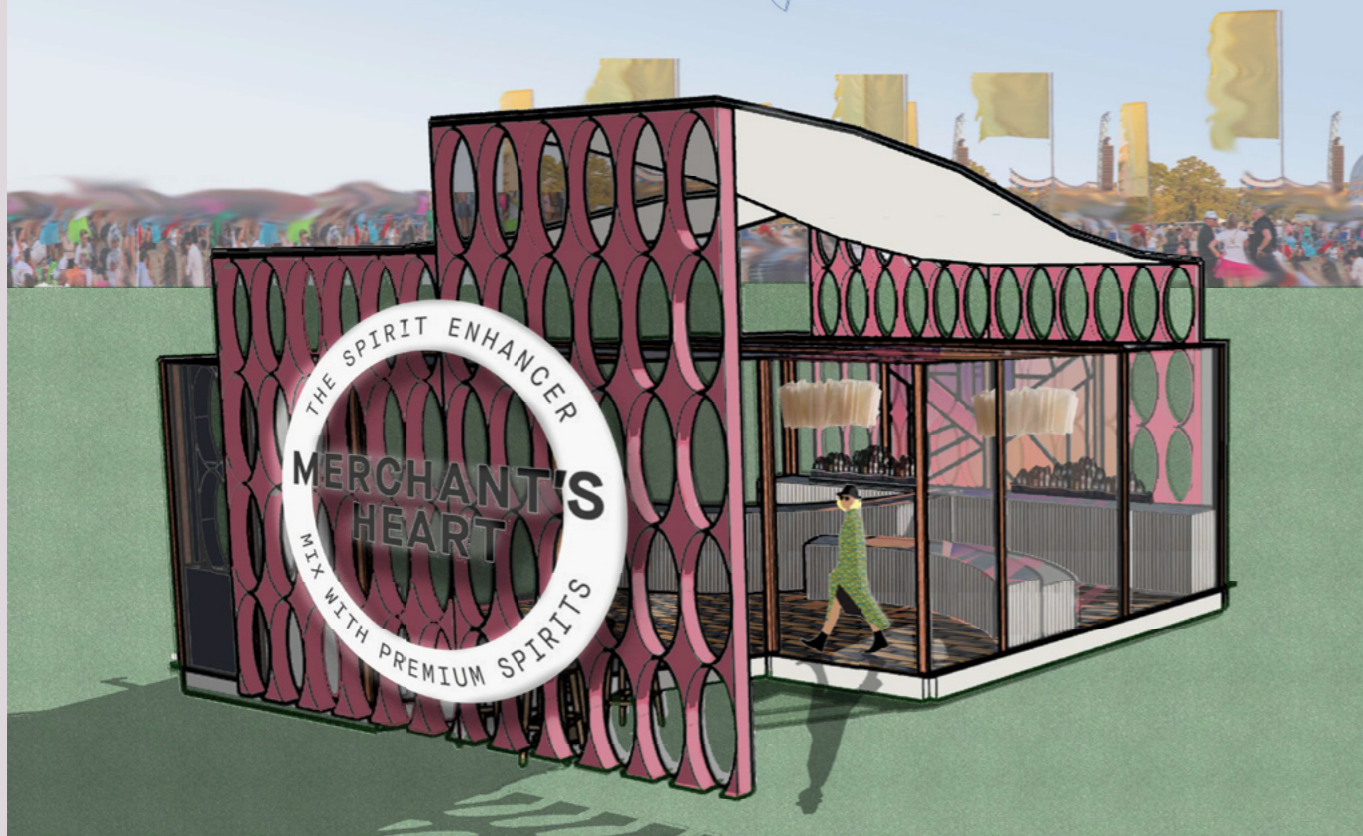
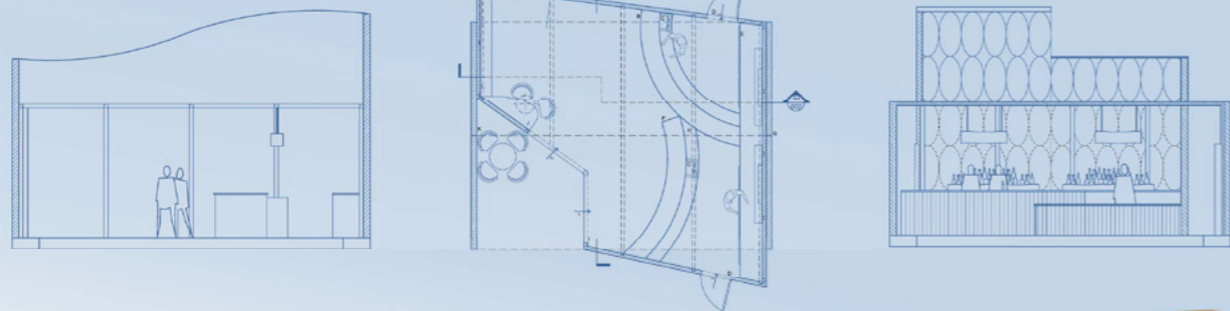
- Evening Prima Corian for the Bar tops
- Bamboo Slats for Bar front
- Woven Vinyl Flooring
- Dichroic Film display



Section 01

Plan

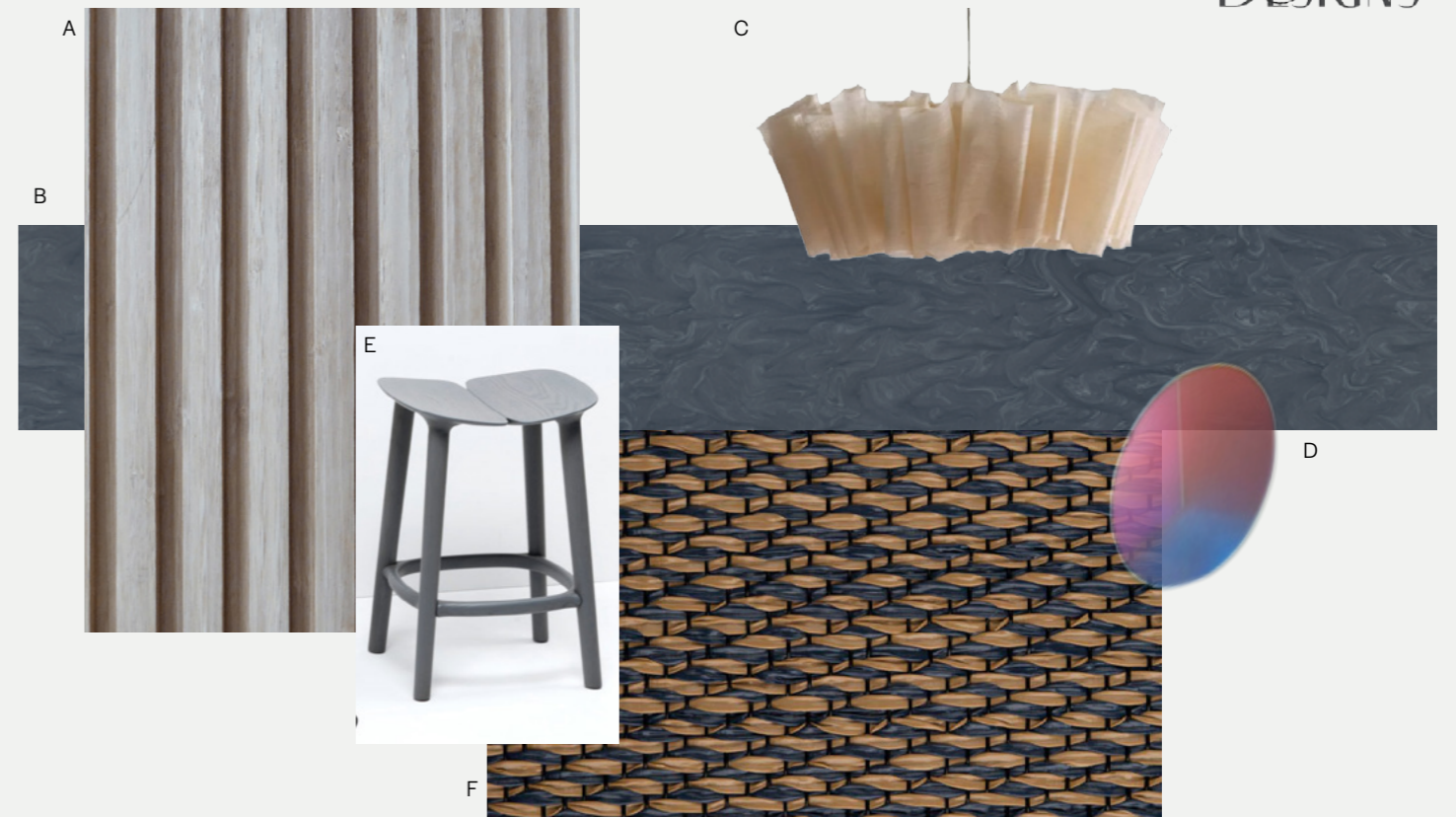
Section 02



PROJECT POSTER

MERCHANT'S HEART FINISHES BOARD

DESIGNS



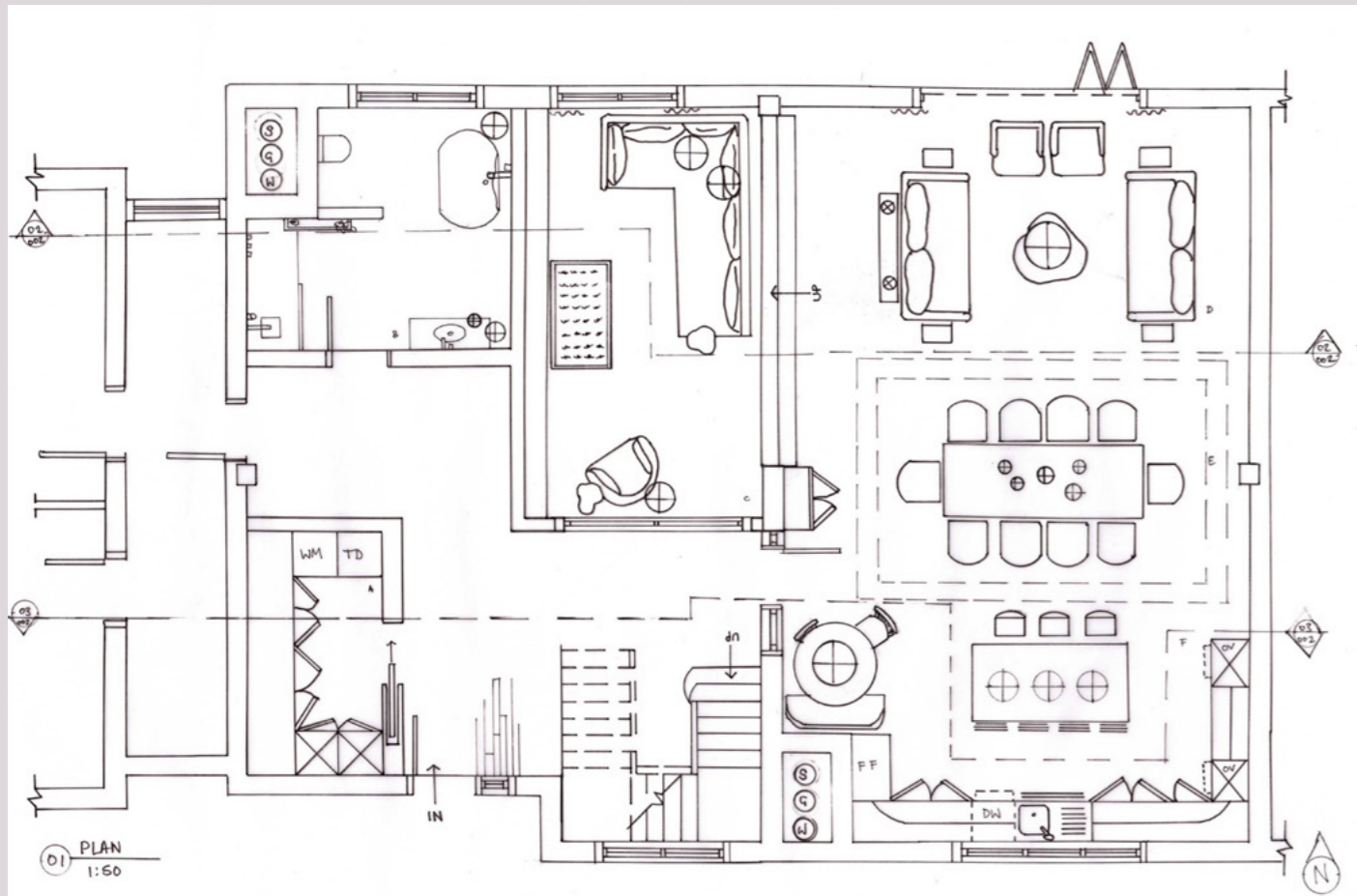
- A: BAMBOO SLAT BAR FRONT
- B: EVENING PRIMA, CORIAN, BAR TOP
- C: ANDERS LIGHT LARGE, PINCH
- D: DICHOIC FILM
- E: OSSO STOOL, MATTIAZZI
- F: WOCEN VINYL, GRANITE, UNNATURAL FLOORING

1

FINISHES BOARD



REDERED DRAWING



HAND DRAWING FLOOR PLAN



HAND DRAWING SECTIONS



PHOTOSHOP RENDERED VISUAL

term 4 | residential project



BRIEF | RESEARCH | MOOD BOARD | DESIGN

The BRIEF

To design the common areas for a residential project suitable for a house share for four people. All residents will be of a similar age with similar lifestyles.

The client Roya has a love of travel and new places and capturing these experiences on camera. She also enjoys cooking and baking so the kitchen must be suitable for her as well having space for the other house mates to cook.

The RESEARCH

Research looked into the client's likes and hobbies and considered ways this could be included in the design. Her interest in travel could be used in the styling of the design or by the use of natural materials or bold colours.

The MOOD BOARD

A mood board and post card have been created to help to describe the design intention for the project. Some of the key words which came from the research were homely, organic and a warm glow. These have been inspired by the desired atmosphere of the space wanted from the client. To bring in her travel influences from places like Bali and considering how lighting can have an impact on the space as a whole.

The DESIGN

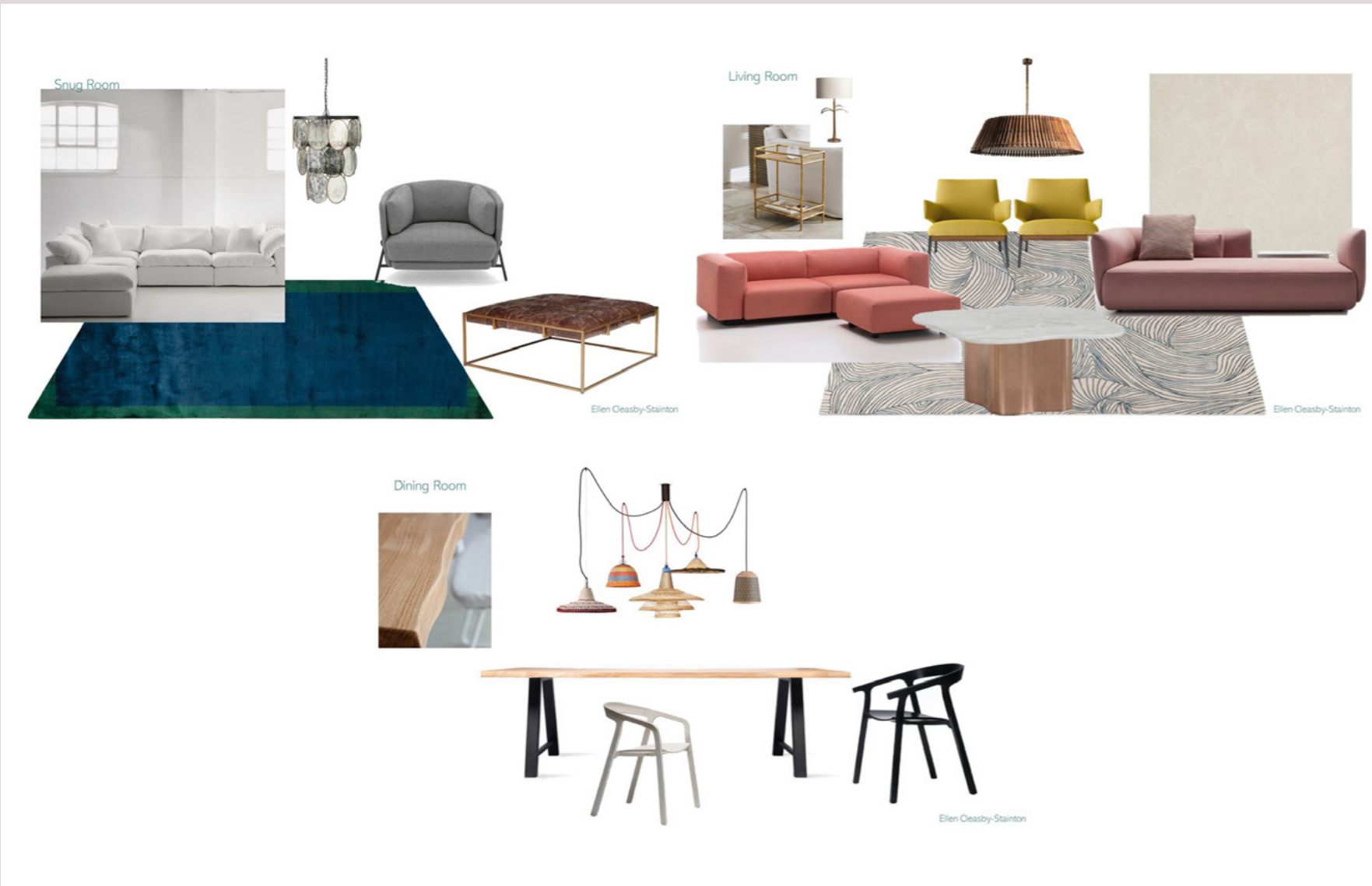
The final design I feel met the requirements from the client. The space has been divided to have a large open plan living area, with a large kitchen and island to allow space for Roya and her house mates to cook and relax together. The finishes are contemporary yet warm with golden hued marble and light oak cabinets.

A large dining table allows them to host parties and a place to gather and catch up with each other.

The living space has two large sofa's with accent chairs forming a U shape. This allows for easy conversation whilst still being open to the larger space as a whole.

Going up a few steps to a sectioned off second living space where the client can retreat if they wanted privacy and to watch TV. It has a large corner sofa so people can gather.

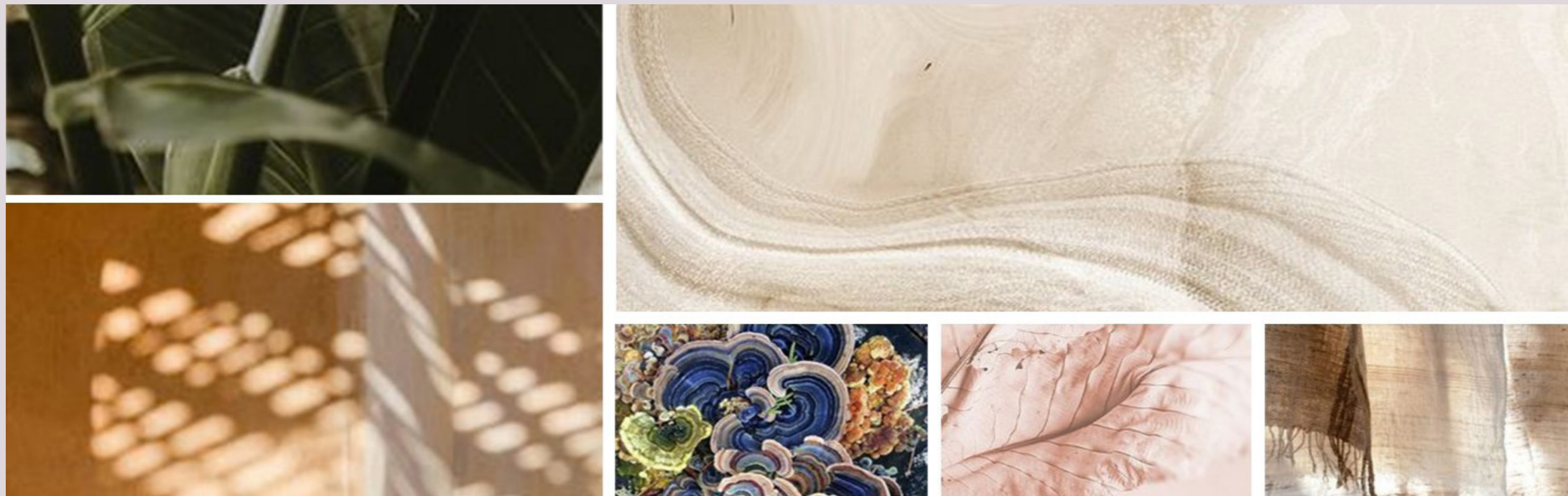
The bathroom and utility are close to the bedrooms, limited the need for people to come through the main living space to access the facilities. The utility has tall storage for ironing boards and cleaning items. As well as washing and tumble dryer. The bathroom is generous in size with a bath and large shower. The idea was to create a spa like space to relax, the primary finish is a white and grey marble, but in the shower a dark green marble tile has been used to create interest and drama to the space.



SOURCING BOARD

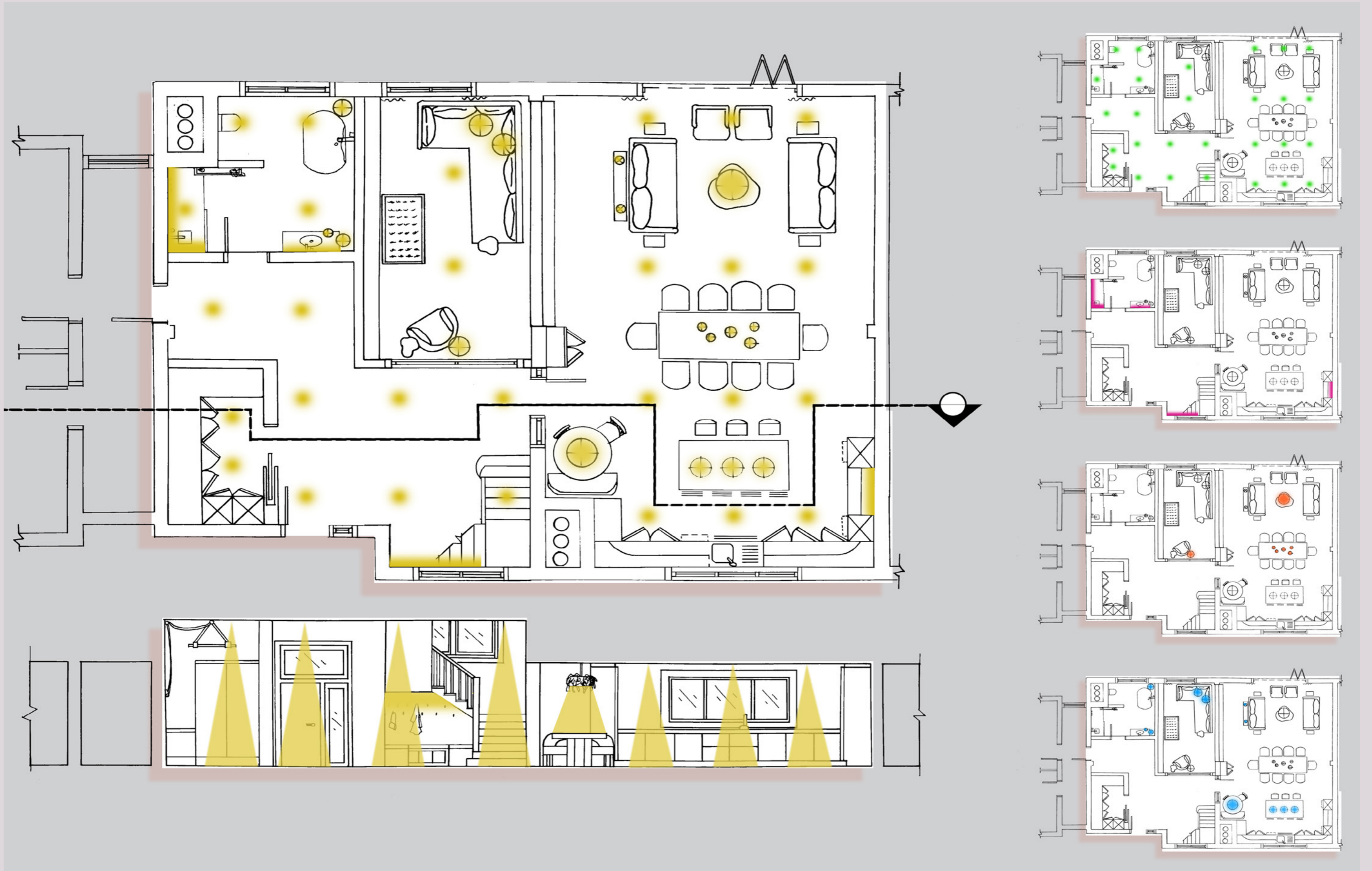


PHYSICAL SOURCING BOARD



MOOD BOARD

- SKILLS**
- Zoning & Space Planning
 - Research Scope
 - Mood board and Post Card
 - Hand drawing
 - Photoshop rendering
 - 3D modelling
 - Physical Sample board



LIGHTING PLAN AND SECTION

ELLEN APPELBY - ZUMTHOR

**STUDIO
APPELBY**